

PROJECT NAME AND LOCATION :



STORE #785
975 W. POPLAR AVENUE
COLLIERVILLE, TN 38017

THIS DRAWING AND ITS CONTENTS ARE CONSIDERED INSTRUMENTS OF SERVICE AS SUCH THEY ARE COPYRIGHTED PROPERTY OF RUN RUN DESIGN, LLC. THE USE OF THESE DRAWINGS ARE LIMITED TO THIS SPECIFIC PROJECT AND ARE NOT TO BE OTHERWISE REPRODUCED IN ANY WAY OR USED FOR SUPPLEMENTAL LOCATIONS WITHOUT WRITTEN PERMISSION FROM RUN RUN DESIGN, LLC.

DRAWING REVISIONS:

no.	distribution	date
A	ISSUE DATE	12.21.17
B	SUBMITTAL DATE	--
no.	revision	date
1	--	--
2	--	--
3	--	--

SHEET NAME:
ONE LINE DIAGRAM



project no: 17-085
dwg no: **E3.0**

ONE LINE GENERAL NOTES

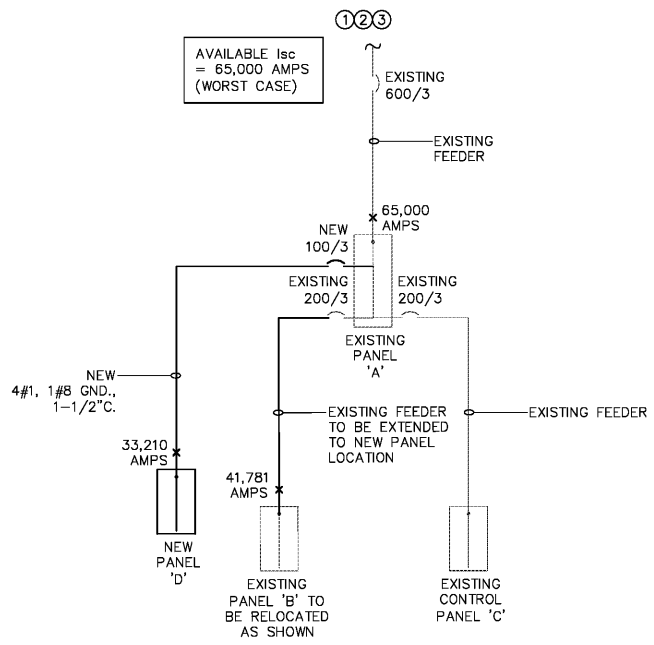
- SWITCHBOARD COMPONENTS, INCLUDING OVERCURRENT PROTECTIVE DEVICES SHALL BE FULLY RATED FOR THE AVAILABLE FAULT CURRENT SHOWN.
- PER NEC ARTICLE 110.22, PROVIDE IDENTIFICATION AT ENCLOSURE OF PANEL BOARDS WHERE BREAKERS ARE APPLIED IN SERIES COMBINATION, STATING: "CAUTION - SERIES COMBINATION SYSTEM RATED _____AMPS AVAILABLE. IDENTIFIED REPLACEMENT COMPONENTS REQUIRED." CONTRACTOR TO FILL IN BLANK WITH AVAILABLE FAULT CURRENT AS SHOWN ON ONE-LINE DIAGRAM.
- PER NEC ARTICLE 240.86(A), PROVIDE IDENTIFICATION AT EACH DISCONNECTING MEANS FEEDING DOWNSTREAM DEVICES APPLIED IN SERIES COMBINATION. PROVIDE NOTE INDICATING: "CAUTION - SERIES RATED DEVICES ARE FED FROM THIS REMOTE MAIN. _____AMPS AVAILABLE. IDENTIFIED REPLACEMENT COMPONENT REQUIRED." CONTRACTOR TO FILL IN BLANK WITH AVAILABLE FAULT CURRENT AS SHOWN ON ONE-LINE DIAGRAM.
- THE SERIES RATED SYSTEM WILL BE 1-TIER WITH DEVICES RATED @ 65K/10K FOR 208V SYSTEMS. MOTOR SHORT CIRCUIT CONTRIBUTION IS LESS THAN 1% OF SYSTEM SHORT CIRCUIT AMPS.
- PROVIDE ARC FLASH AND SHOCK HAZARD WARNING IDENTIFICATION PER NEC ARTICLE 110.16
- "NO DESIGN CHANGES MAY BE MADE TO THE SYSTEM WITHOUT THE PRIOR APPROVAL OF THE DESIGN ENGINEER AND THE ELECTRICAL INSPECTOR."
- THE FEEDER LENGTHS SHOWN IN THE INPUT DATA IS FOR CALCULATIONS ONLY. IT IS NOT THE INTENT TO USE THESE ENTERED LENGTHS FOR USAGE OF ACTUAL FIELD FEEDER LENGTH MEASUREMENTS.

ONE LINE GENERAL NOTES

- ONE LINE DIAGRAM SHOWN IS CONCEPTUAL ONLY AND NONE OF THE INFORMATION HAS BEEN VERIFIED
- ELECTRICAL CONTRACTOR SHALL VERIFY THE FOLLOWING PRIOR TO ROUGH-IN/INSTALLATION:
 - SERVICE ENTRANCE SECTION SIZE
 - SERVICE ENTRANCE SECTION CONFIGURATION
 - SERVICE ENTRANCE SECTION RATING (VOLTAGE, PHASE, AMPERAGE)
 - GROUNDING
- ELECTRICAL CONTRACTOR SHALL REPORT TO THE ENGINEER IF THERE ARE ANY DISCREPANCIES BETWEEN ONE LINE DIAGRAM AND FIELD CONDITIONS

CONTRACTOR NOTE

EXISTING INFORMATION SHOWN ON THESE DRAWINGS ARE BASED ON INFORMATION OBTAINED FROM RECORD DRAWINGS. CONTRACTOR SHALL FIELD VERIFY ALL EXISTING CONDITIONS PRIOR TO SUBMITTING HIS BID. ANY CHANGES REQUIRED DUE TO INCORRECT EXISTING INFORMATION WILL BE THE CONTRACTOR'S RESPONSIBILITY.



PARTIAL ONE LINE DIAGRAM

NOTES:

- ALL EQUIPMENT IS EXISTING TO REMAIN U.N.O. AND SHOWN FOR REFERENCE ONLY.
- ELECTRICAL CONTRACTOR TO VERIFY ALL EXISTING SIZES & RATINGS OF FEEDERS, SWITCHES, FUSES AND CIRCUIT BREAKERS SHOWN.

FAULT CURRENT SCHEDULE

DEVICE	FAULT	AIC RATING	L-N VOLTS	UTILITY FAULT	FED FROM		FEEDER						TRANSFORMER KVA	TOTAL MOTOR FAULT	DIRECTLY CONNECTED MOTOR LOAD	
					DEVICE	FAULT	SIZE	X / 1000'	R / 1000'	LENGTH	X	R			KVA	KVA
A	65,000	65K/10K	120V	64,691			(2)#350kcmil	0.02	0.019					309	21.9	243
B	41,781	42,000	120V	41,642	A	64,691	#3/0	0.042	0.077	15'	0.0006	0.0012		139	3.08	34
D	33,210	42,000	120V	33,121	A	64,691	#1	0.046	0.15	15'	0.0007	0.0023		89	2.84	32

Order Plans @

Electrical Engineer
Omid Ardebili P.E.
8100 East Indian School Road Suite 203
T 480.361.6269 C 480.626.1838
Proj. Mgr: TME Proj. No: 18111