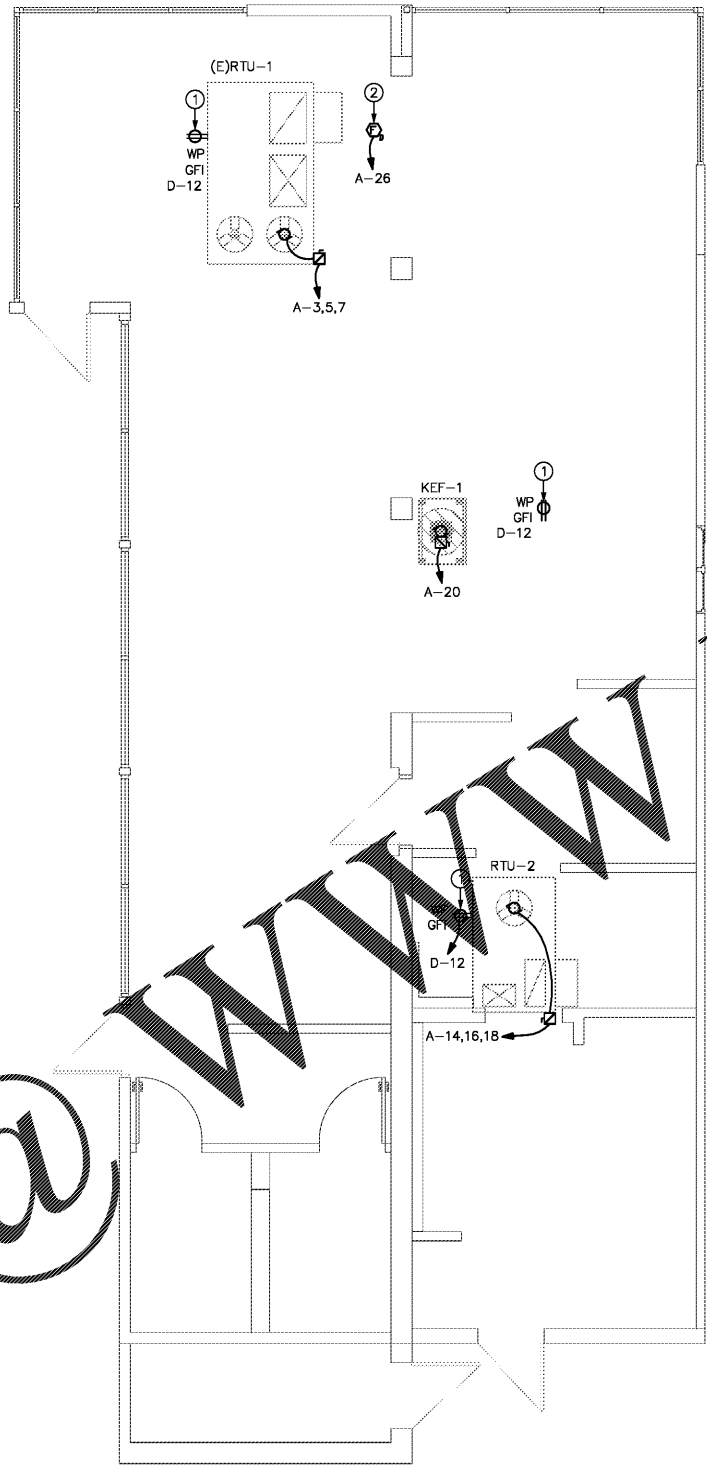


Order Plans

@



1 MECHANICAL POWER FLOOR PLAN  
SCALE: 1/4"=1'-0" NORTH

**MECHANICAL GENERAL NOTES**

- A. VERIFY ALL MECHANICAL UNIT LOCATIONS WITH MECHANICAL PLANS.
- B. THE ELECTRICAL CONTRACTOR SHALL NOT MOUNT DISCONNECT EQUIPMENT DIRECTLY TO MECHANICAL UNITS FOR DISCONNECTS 200A AND LARGER. THE ELECTRICAL CONTRACTOR SHALL PROVIDE A SELF-SUPPORTING SYSTEM FOR DISCONNECT EQUIPMENT.
- C. PROVIDE WEATHERPROOF, HEAVY DUTY, NEMA 3R FUSIBLE DISCONNECT SWITCHES FOR ALL MECHANICAL UNITS LOCATED OUTSIDE.
- D. ALL EXTERIOR RECEPTACLES SHALL BE WEATHER RESISTANT GFCI (PASS & SEYMOUR 2095DSWRBK OR EQUAL), INSTALLED IN A WEATHERPROOF ENCLOSURE WITH A WHILE IN USE COVERPLATE (PASS & SEYMOUR #WUC10DCL OR EQUAL).
- E. EXHAUST FANS MOUNTED OUTSIDE SHALL HAVE A WEATHERPROOF DISCONNECT MOUNTED EXTERIOR TO THE UNIT. INTERNAL DISCONNECT SWITCHES SHALL NOT BE ALLOWED.

**KEYED NOTES**

- 1. PROVIDE MAINTENANCE RECEPTACLE WITHIN 25' OF ALL MECHANICAL EQUIPMENT UNLESS EXISTING RECEPTACLES ARE PRESENT PER NEC 210.63.
- 2. PROVIDE 120V CONNECTION TO DUCT SMOKE DETECTORS INTERLOCK FOR SIMULTANEOUS UN SHUT-DOWN WITHIN 30 SECONDS OR LESS. VERIFY FINAL CONNECTION LOCATION AND REQUIREMENTS WITH MECHANICAL CONTRACTOR. TYPICAL.

FIXTURE/ITEM IDENTIFIED WITH PREFIX:  
 'E' - INDICATES EXISTING TO BE RELOCATED.  
 'N' - INDICATES NEW TO MATCH EXISTING.  
 'R' - INDICATES EXISTING TO BE RELOCATED.  
 'X' - INDICATES EXISTING TO BE REMOVED.

RUN RUN DESIGN

www.LDIDline.com

PROJECT NAME AND LOCATION :



STORE #785  
975 W. POPLAR AVENUE  
COLLIERVILLE, TN 38017

THIS DRAWING AND ITS CONTENTS ARE CONSIDERED INSTRUMENTS OF SERVICE AS SUCH THEY ARE COPYRIGHTED PROPERTY OF RUN RUN DESIGN, LLC. THE USE OF THESE DRAWINGS ARE LIMITED TO THIS SPECIFIC PROJECT AND ARE NOT TO BE OTHERWISE REPRODUCED IN ANY WAY OR USED FOR SUPPLEMENTAL LOCATIONS WITHOUT WRITTEN PERMISSION FROM RUN RUN DESIGN, LLC.

**DRAWING REVISIONS:**

no.	distribution	date
A	ISSUE DATE	12.21.17
B	SUBMITTAL DATE	--
no.	revision	date
1	--	--
2	--	--
3	--	--

SHEET NAME:  
**MECHANICAL POWER FLOOR PLAN**

**Electrical Engineer**  
Omid Ardebili P.E.  
8100 East Indian School Road Suite 203  
T 480.361.6269 C 480.626.1838  
Proj. Mgr: TME Proj. No: 18111

PRELIMINARY NOT FOR CONSTRUCTION

project no: 17-085  
dwg no: **E2.1**