

SECTION 15B: PLUMBING:

15B GENERAL INSTRUCTIONS

15B GENERAL REQUIREMENTS

REQUIREMENTS UNDER DIVISION ONE AND THE GENERAL AND SUPPLEMENTARY CONDITIONS OF THESE SPECIFICATIONS SHALL BE A PART OF THIS SECTION. THE CONTRACTOR SHALL BE RESPONSIBLE TO BECOME THOROUGHLY ACQUAINTED WITH ITS CONTENTS AS TO REQUIREMENTS THAT AFFECT THIS DIVISION OR SECTION. WORK REQUIRED UNDER THIS SECTION INCLUDES MATERIAL, EQUIPMENT, APPLIANCES, TRANSPORTATION, SERVICES AND LABOR REQUIRED TO COMPLETE THE ENTIRE PLUMBING SYSTEM AS REQUIRED BY THE DRAWINGS AND SPECIFICATIONS.

THE SPECIFICATIONS AND THE DRAWINGS ARE COMPLEMENTARY, AND ANY PORTION OF WORK DESCRIBED IN ONE SHALL BE PROVIDED AS IF DESCRIBED IN BOTH. IN THE EVENT OF DISCREPANCIES ON THE DRAWINGS AND SPECIFICATIONS, THE CONTRACTOR SHALL NOTIFY THE ENGINEER OF SAME PRIOR TO PROCEEDING WITH THE WORK INVOLVED, IN ORDER THAT CORRECT PROGRESS OF THE WORK MAY BE PERFORMED.

15B DEFINITIONS

FURNISH: "TO SUPPLY AND DELIVER TO THE PROJECT SITE, READY FOR UNLOADING, UNPACKING, ASSEMBLY, INSTALLATION AND SIMILAR OPERATIONS."

INSTALL: "TO PERFORM ALL OPERATIONS AT THE PROJECT SITE INCLUDING, BUT NOT LIMITED TO, THE ACTUAL UNLOADING, UNPACKING, ASSEMBLING, ERECTING, PLACING, ANCHORING, APPLYING, WORKING TO DIMENSION, FINISHING, CURING, PROTECTING, CLEANING, TESTING, COMMISSIONING, STARTING UP AND SIMILAR OPERATIONS, COMPLETE, AND READY FOR THE INTENDED USE."

PROVIDE: "TO FURNISH AND INSTALL, COMPLETE AND READY FOR THE INTENDED USE."

FURNISHED BY OWNER OR FURNISHED BY OTHERS: "AN ITEM FURNISHED BY THE OWNER OR UNDER OTHER DIVISIONS OR CONTRACTS, AND INSTALLED UNDER THE REQUIREMENTS OF THIS DIVISION, COMPLETE, AND READY FOR THE INTENDED USE, INCLUDING ALL ITEMS AND SERVICES INCIDENTAL TO THE WORK NECESSARY FOR PROPER INSTALLATION AND OPERATION. INCLUDE THE INSTALLATION UNDER THE WARRANTY REQUIRED BY THIS DIVISION."

ENGINEER: WHERE REFERENCED IN THIS DIVISION, "ENGINEER" IS THE ENGINEER OF RECORD AND THE DESIGN PROFESSIONAL FOR THE WORK UNDER THIS DIVISION, AND IS A CONSULTANT TO, AND AN AUTHORIZED REPRESENTATIVE OF, THE ARCHITECT, AS DEFINED IN THE GENERAL AND/OR SUPPLEMENTARY CONDITIONS WHEN USED IN THIS DIVISION, IT MEANS INCREASED INVOLVEMENT BY, AND OBLIGATIONS TO, THE ENGINEER, IN ADDITION TO INVOLVEMENT BY, AND OBLIGATIONS TO, THE ARCHITECT.

AHJ: THE LOCAL CODE AND/OR INSPECTION AGENCY (AUTHORITY) HAVING JURISDICTION OVER THE WORK.

NRTL: NATIONALLY RECOGNIZED TESTING LABORATORY, AS DEFINED AND LISTED BY OSHA 1910.7 (E.G., UL, ETL, CSA), AND ACCEPTABLE TO THE ARCHITECT FOR THE PROJECT.

THE TERMS "APPROVED", "EQUAL", "APPROVED EQUAL", OR "EQUAL" ARE USED SYNONYMOUSLY AND SHALL MEAN THAT THE ITEM OR EQUIPMENT OR OTHER WORK THAT IS EQUAL TO THE ITEM OR MANUFACTURER SPECIFIED, OR TESTED "APPROVED" SHALL MEAN LABELS LISTED, OR BOTH, THAN NRTL, AND ACCEPTABLE TO THE AHJ OVER THIS PROJECT.

PREQUALIFY: VISIT THE SITE OF THE PROPOSED WORK AND BE FULLY INFORMED AS TO THE CONDITIONS UNDER WHICH THE WORK IS TO BE DONE. FAILURE TO DO SO WILL NOT BE CONSIDERED SUFFICIENT JUSTIFICATION TO REQUEST OR OBTAIN EXTRA COMPENSATION OVER AND ABOVE THE CONTRACT PRICE.

15B MATERIAL AND WORKMANSHIP

MATERIAL, EQUIPMENT, AND APPARATUS PROVIDED UNDER THIS CONTRACT SHALL BE NEW UNLESS OTHERWISE STATED HEREIN, OF BEST QUALITY NORMALLY USED FOR THE PURPOSE IN GOOD COMMERCIAL PRACTICE, AND FREE FROM DEFECTS. MODEL NUMBERS LISTED IN SPECIFICATIONS OR SHOWN ON THE DRAWINGS ARE NOT NECESSARILY INTENDED TO DESIGNATE THE REQUIRED TRIM, WRITTEN DESCRIPTIONS OF THE TRIM GOVERN MODEL NUMBERS.

PIPE, PIPE FITTINGS, PIPE SPECIALTIES AND VALVES SHALL BE MANUFACTURED IN PLANTS LOCATED IN THE UNITED STATES.

WORK PERFORMED UNDER THIS CONTRACT SHALL PROVIDE A NEAT AND "WORKMANLIKE" APPEARANCE WHEN COMPLETED, TO THE SATISFACTION OF THE ARCHITECT AND ENGINEER. WORKMANSHIP SHALL BE THE FINEST POSSIBLE BY EXPERIENCED MECHANICS. INSTALLATIONS SHALL BE MADE IN A MANNER THAT WILL COMPLY WITH APPLICABLE CODES AND LAWS.

INSTALLATION SHALL FUNCTION AS DESIGNED AND INTENDED WITH RESPECT TO EFFICIENCY, CAPACITY, AND NOISE LEVEL, ETC. ABNORMAL NOISE CAUSED BY RATTLING EQUIPMENT OR PIPING AND SQUEAKS IN ROTATING COMPONENTS WILL NOT BE ACCEPTABLE. MATERIALS AND EQUIPMENT SHALL BE OF COMMERCIAL SPECIFICATION GRADE IN QUALITY. LIGHT DUTY AND RESIDENTIAL GRADE EQUIPMENT WILL NOT BE ACCEPTED UNLESS OTHERWISE INDICATED.

REMOVE FROM THE PREMISES WASTE MATERIAL PRESENT AS A RESULT OF HIS WORK, INCLUDING CARTONS, CRATING, PAPER, STICKERS, AND/OR EXCAVATION MATERIAL NOT USED IN BACKFILLING, ETC. CLEAN PIECES OF EQUIPMENT INSTALLED UNDER THIS CONTRACT TO PRESENT A NEAT AND CLEAN INSTALLATION AT THE TERMINATION OF THE WORK.

REPAIR OR REPLACE PUBLIC AND PRIVATE PROPERTY DAMAGED AS A RESULT OF WORK PERFORMED UNDER THIS CONTRACT TO THE SATISFACTION OF AUTHORITIES AND REGULATIONS HAVING JURISDICTION.

15B COORDINATION

COORDINATE WORK WITH THAT OF OTHER TRADES SO THAT THE VARIOUS COMPONENTS OF THE SYSTEMS WILL BE INSTALLED AT THE PROPER TIME, WILL FIT THE AVAILABLE SPACE, AND WILL ALLOW PROPER SERVICE ACCESS TO THOSE ITEMS REQUIRING MAINTENANCE. COMPONENTS WHICH ARE INSTALLED WITHOUT REGARD TO THE ABOVE SHALL BE RELOCATED AT NO ADDITIONAL COST TO THE OWNER.

UNLESS NOTED ELSEWHERE, GENERAL CONTRACTOR WILL PROVIDE CHASES AND OPENINGS IN BUILDING CONSTRUCTION REQUIRED FOR INSTALLATION OF THE SYSTEMS SPECIFIED HEREIN. CONTRACTOR SHALL FURNISH THE GENERAL CONTRACTOR WITH INFORMATION REGARDING CHASES AND OPENINGS WHEN REQUIRED. CONTRACTOR SHALL KEEP INFORMED AS TO THE WORK OF OTHER TRADES ENGAGED IN THE CONSTRUCTION OF THE PROJECT, AND SHALL EXECUTE HIS WORK IN SUCH A MANNER AS NOT TO INTERFERE WITH OR DELAY THE WORK OF OTHER TRADES.

FIGURED DIMENSIONS SHALL BE TAKEN IN PREFERENCE TO SCALED DIMENSIONS. CONTRACTOR SHALL TAKE HIS OWN MEASUREMENTS AT THE BUILDING, AS VARIATIONS MAY OCCUR. CONTRACTOR WILL BE HELD RESPONSIBLE FOR ERRORS WHICH COULD HAVE BEEN AVOIDED BY PROPER CHECKING AND VERIFICATION.

PROVIDE MATERIALS WITH TRIM THAT WILL PROPERLY FIT THE TYPES OF CEILING, WALL, OR FLOOR FINISHES ACTUALLY INSTALLED. MODEL NUMBERS LISTED IN THE SPECIFICATIONS OR SHOWN ON THE DRAWINGS ARE NOT INTENDED TO DESIGNATE THE REQUIRED TRIM.

15B ORDINANCES AND CODES

WORK PERFORMED UNDER THIS CONTRACT SHALL, AT A MINIMUM, BE IN CONFORMANCE WITH APPLICABLE NATIONAL, STATE AND LOCAL CODES HAVING JURISDICTION, EQUIPMENT FURNISHED AND ASSOCIATED INSTALLATION WORK PERFORMED UNDER THIS CONTRACT SHALL BE IN STRICT COMPLIANCE WITH CURRENT APPLICABLE CODES ADOPTED BY THE LOCAL AHJ INCLUDING ANY AMENDMENTS AND STANDARDS AS SET FORTH BY THE NATIONAL FIRE PROTECTION ASSOCIATION (NFPA), UNDERWRITERS LABORATORIES (UL), OCCUPATIONAL SAFETY AND HEALTH ADMINISTRATION (OSHA), AMERICAN SOCIETY OF MECHANICAL ENGINEERS (ASME), AMERICAN SOCIETY OF HEATING, REFRIGERATION, AND AIR CONDITIONING ENGINEERS (ASHRAE), AMERICAN NATIONAL STANDARDS INSTITUTE (ANSI), AMERICAN SOCIETY OF TESTING MATERIALS (ASTM) AND OTHER NATIONAL STANDARDS AND CODES WHERE APPLICABLE. WHERE THE CONTRACT DOCUMENTS EXCEED THE REQUIREMENTS OF THE REFERENCED CODES, STANDARDS, ETC., THE CONTRACT DOCUMENTS SHALL TAKE PRECEDENCE.

PROCURE AND PAY FOR PERMITS AND LICENSES REQUIRED FOR THE ACCOMPLISHMENT OF THE WORK HEREIN DESCRIBED, WHERE REQUIRED, OBTAIN, PAY FOR AND FURNISH CERTIFICATES OF INSPECTION TO OWNER. THE CONTRACTOR WILL BE HELD RESPONSIBLE FOR ANY VIOLATION OF THE LAW. MAINTAIN NECESSARY SIGNAL LIGHTS AND GUARDS FOR THE SAFETY OF THE PUBLIC.

15B PROTECTION OF EQUIPMENT AND MATERIAL

STORE AND PROTECT FROM DAMAGE EQUIPMENT AND MATERIAL AFTER DELIVERY TO JOB SITE. COVER WITH WATER-PROOF, TEAR-RESISTANT, HEAVY TARP OR POLYETHYLENE PLASTIC AS REQUIRED TO PROTECT FROM PLASTER, DIRT, PAINT, WATER, OR PHYSICAL DAMAGE. EQUIPMENT AND MATERIAL DAMAGED BY CONSTRUCTION ACTIVITIES WILL BE REJECTED, AND CONTRACTOR IS OBLIGATED TO FURNISH NEW EQUIPMENT AND MATERIAL OF A LIKE KIND AT HIS OWN EXPENSE.

KEEP PREMISES BROOM CLEAN OF FOREIGN MATERIAL CREATED UNDER THIS CONTRACT. PIPING, PLUMBING, ETC. SHALL HAVE A NEAT AND CLEAN APPEARANCE AT THE TERMINATION OF WORK.

PLUG OR CAP OPEN ENDS OF PIPING SYSTEMS DURING CONSTRUCTION WHEN NOT IN USE TO PREVENT THE ENTRANCE OF DEBRIS INTO THE SYSTEMS.

KEEP THE MANUFACTURER-PROVIDED PROTECTIVE COVERINGS ON FLOOR DRAIN AND FLOOR SINKS AND BENCH DRAINS DURING CONSTRUCTION. REMOVE COVERINGS AT THE TERMINATION OF THE WORK AND FOR EXPOSED SURFACES.

15B SUBSTITUTIONS

THE BASE BID SHALL INCLUDE ONLY THE PRODUCTS FROM MANUFACTURERS SPECIFICALLY NAMED IN THE DRAWINGS AND SPECIFICATIONS. NO SUBSTITUTION WILL BE CONSIDERED PRIOR TO RECEIPT OF THIS UNLESS WRITTEN REQUEST FOR APPROVAL FROM THE ARCHITECT AND ENGINEER AT LEAST TEN BUSINESS DAYS PRIOR TO THE DATE OF RECEIPT OF BIDS. EACH REQUEST SHALL INCLUDE THE NAME OF THE MATERIAL OR EQUIPMENT FOR WHICH IT IS TO BE SUBSTITUTED, THE NAME OF THE MANUFACTURER, PERFORMANCE AND TEST DATA AND OTHER INFORMATION NECESSARY FOR AN EVALUATION. A STATEMENT SETTING FORTH CHANGES IN OTHER MATERIALS, INCLUDING DRAWINGS, CUTS, PERFORMANCE AND TEST DATA AND OTHER INFORMATION NECESSARY FOR AN EVALUATION. THE BURDEN OF PROOF OF THE MERIT OF THE PROPOSED SUBSTITUTE IS UPON THE PROPOSER. THE ENGINEER'S DECISION OF APPROVAL OR DISAPPROVAL TO BID OF A PROPOSED SUBSTITUTE SHALL BE FINAL.

THE TERMS "APPROVED", "APPROVED EQUAL", OR "EQUAL" REFER TO APPROVAL BY THE ENGINEER AS AN ACCEPTABLE ALTERNATE BID. NO SUBSTITUTIONS WILL BE CONSIDERED THAT ARE NOT BID AS AN ALTERNATE. NO MATERIAL SUBSTITUTIONS SHALL BE CONSIDERED FOR APPROVAL PRIOR TO AWARD OF CONTRACT.

COORDINATE AND VERIFY WITH OTHER TRADES WHETHER OR NOT THE SUBSTITUTED EQUIPMENT CAN BE INSTALLED AS SHOWN ON THE CONSTRUCTION DRAWINGS WITHOUT MODIFICATION TO ASSOCIATED SYSTEMS OR ARCHITECTURAL OR ENGINEERING DESIGN. INCLUDE ADDITIONAL COSTS FOR ARCHITECTURAL AND ENGINEERING DESIGN FEES IN BID IF DRAWING MODIFICATIONS ARE REQUIRED BECAUSE OF SUBSTITUTED EQUIPMENT.

15B SHOP DRAWINGS

UPON BEING AWARDED A CONTRACT, SUBMIT TO THE ARCHITECT FOR APPROVAL, SIX (6) COPIES OF MANUFACTURER'S SHOP DRAWINGS FOR EQUIPMENT TO BE FURNISHED UNDER THIS CONTRACT. ITEMS REQUIRING COORDINATION BETWEEN CONTRACTORS AND SHEET METAL DUCTWORK FABRICATION DRAWINGS. BEFORE SUBMITTING SHOP DRAWINGS AND MATERIAL LISTS, VERIFY THAT EQUIPMENT SUBMITTED IS MUTUALLY COMPATIBLE AND SUITABLE FOR THE INTENDED USE, AND WILL FIT THE AVAILABLE SPACE AND ALLOW AMPLE ROOM FOR MAINTENANCE. HIGHLIGHT, MARK, LIST OR INDICATE THE MATERIALS, PERFORMANCE CRITERIA AND ACCESSORIES THAT ARE BEING PROPOSED. SUBMIT SHOP DRAWINGS AS EARLY AS REQUIRED TO SUPPORT THE PROJECT SCHEDULE. ALLOW FOR TWO WEEKS ENGINEER REVIEW TIME PLUS MAILING TIME PLUS A DUPLICATION OF THIS TIME FOR RESUBMITTAL IF REQUIRED.

SUBMITTALS AND SHOP DRAWINGS SHALL NOT CONTAIN FAISAL'S FIRM NAME OR LOGO, NOR SHALL IT CONTAIN THE FAISAL'S ENGINEER'S SEAL AND SIGNATURE. THEY SHALL NOT BE COPIES OF FAISAL'S WORK PRODUCT. IF THE CONTRACTOR DESIRES TO USE ELEMENTS OF SUCH PRODUCT, REFER TO PARAGRAPH "ELECTRONIC DRAWING FILES" FOR PROCEDURES TO BE USED.

THE ENGINEER'S CHECKING AND SUBSEQUENT APPROVAL OF SUCH SHOP DRAWINGS WILL NOT RELIEVE THE CONTRACTOR FROM RESPONSIBILITY FOR ERRORS IN DIMENSIONS, DETAILS, SIZE OF MEMBERS, QUANTITIES, OMISSIONS OF COMPONENTS OR FITTINGS; COORDINATION OF ELECTRICAL REQUIREMENTS; OR FOR COORDINATING ITEMS WITH ACTUAL BUILDING CONDITIONS. PROCEED WITH THE PROCUREMENT AND INSTALLATION OF EQUIPMENT ONLY AFTER RECEIVING APPROVED SHOP DRAWINGS RELATIVE TO EACH ITEM.

CATALOG DATA SHALL BE PROPERLY BOUND, IDENTIFIED, INDEXED AND TABBED IN A 3-RING BINDER. EACH ITEM OR MODEL NUMBER SHALL BE CLEARLY MARKED AND ACCESSORIES INDICATED. LABEL THE CATALOG DATA WITH THE EQUIPMENT IDENTIFICATION ACRONYM OR NUMBER AS USED ON THE DRAWINGS AND INCLUDE PERFORMANCE CURVES, CAPACITIES, SIZES, WEIGHTS, MATERIALS, FINISHES, WIRING DIAGRAMS, ELECTRICAL REQUIREMENTS AND DEVIATIONS FROM SPECIFIED EQUIPMENT OR MATERIALS. FOR EQUIPMENT WITH STARTERS OR VFDs, INCLUDE SHORT CIRCUIT CURRENT RATINGS. MARK OUT INAPPLICABLE ITEMS. SHOP DRAWINGS WILL BE RETURNED WITHOUT REVIEW IF THE ABOVE MENTIONED REQUIREMENTS ARE NOT MET.

15B OPERATION AND MAINTENANCE INSTRUCTIONS

DURING THE COURSE OF CONSTRUCTION, COLLECT AND COMPILE A COMPLETE BROCHURE OF EQUIPMENT FURNISHED AND INSTALLED ON THIS PROJECT. INCLUDE OPERATIONAL AND MAINTENANCE INSTRUCTIONS, MANUFACTURER'S CATALOG SHEETS, WIRING DIAGRAMS, PARTS LISTS, APPROVED SHOP DRAWINGS, AND DESCRIPTIVE LITERATURE AS FURNISHED BY THE EQUIPMENT MANUFACTURER. INCLUDE AN INSIDE COVER SHEET THAT LISTS THE PROJECT NAME, DATE, OWNER, ARCHITECT, CONSULTING ENGINEER, GENERAL CONTRACTOR, SUB-CONTRACTOR, AND AN INDEX OF CONTENTS.

SUBMIT THREE COPIES OF LITERATURE BOUND IN APPROVED BINDERS TO THE ARCHITECT AT THE TERMINATION OF THE WORK. PAPER CLIPS, STAPLES, RUBBER BANDS, AND MAILING ENVELOPES ARE NOT CONSIDERED APPROVED BINDERS. FINAL APPROVAL OF MECHANICAL SYSTEMS INSTALLED UNDER THIS CONTRACT WILL BE WITHHELD UNTIL THIS EQUIPMENT BROCHURE IS RECEIVED AND DEEMED COMPLETE BY THE ARCHITECT AND ENGINEER. INSTRUCT WORKMEN TO SAVE REQUIRED LITERATURE SHIPPED WITH THE EQUIPMENT ITSELF, FOR INCLUSION IN THIS BROCHURE.

PROVIDE "AS-BUILT" DRAWINGS (SEE SPECIAL CONDITIONS)

15B TRAINING

AT A TIME MUTUALLY AGREED UPON BETWEEN THE OWNER AND CONTRACTOR, PROVIDE TO THE OWNER A FACTORY TRAINED AND AUTHORIZED REPRESENTATIVE TO TRAIN OWNER'S DESIGNATED PERSONNEL IN THE OPERATION AND MAINTENANCE OF THE EQUIPMENT PROVIDED FOR THIS PROJECT.

PROVIDE TRAINING AND INCLUDE, BUT NOT BE LIMITED TO AN OVERVIEW OF THE SYSTEM AND THE EQUIPMENT AS IT RELATES TO RELIABILITY AND MAINTENANCE AND MAINTENANCE PROCEDURES AND SCHEDULES RELATED TO STARTUP AND SHUTDOWN TROUBLESHOOTING, SERVICING, PREVENTIVE MAINTENANCE AND APPROPRIATE OPERATOR INTERVENTION; AND REVIEW OF LOGS INCLUDED IN THE OPERATION AND MAINTENANCE MANUALS.

SUBMIT A CERTIFICATION LETTER TO THE ARCHITECT STATING THAT THE OWNER'S DESIGNATED REPRESENTATIVE HAS BEEN TRAINED AS SPECIFIED HEREIN. LETTER SHALL INCLUDE DATE, TIME, ATTENDEES AND SUBJECT OF TRAINING, THE CONTRACTOR AND THE OWNER'S REPRESENTATIVE SHALL SIGN THE CERTIFICATION LETTER INDICATING AGREEMENT THAT THE TRAINING HAS BEEN PROVIDED.

SCHEDULE TRAINING WITH OWNER WITH AT LEAST 7 DAYS' ADVANCE NOTICE.

15B WARRANTIES

COORDINATE WITH DIVISION 1 AND GENERAL CONDITIONS TO DETERMINE WHAT THE ACTUAL REQUIREMENTS ARE, AND MODIFY THE FOLLOWING AS REQUIRED SO AS TO NOT CONTRADICT THEM.

WARRANT EACH SYSTEM AND EACH ELEMENT THEREOF AGAINST ALL DEFECTS DUE TO FAULTY WORKMANSHIP, DESIGN OR MATERIAL FOR A PERIOD OF 12 MONTHS FROM DATE OF SUBSTANTIAL COMPLETION, UNLESS SPECIFIC ITEMS ARE NOTED TO CARRY A LONGER WARRANTY IN THE CONSTRUCTION DOCUMENTS OR MANUFACTURER'S STANDARD WARRANTY EXCEEDS 12 MONTHS. REMEDY ALL DEFECTS OCCURRING WITHIN THE WARRANTY PERIOD(S), AS STATED IN THE GENERAL CONDITIONS AND DIVISION 1.

WARRANTIES SHALL INCLUDE LABOR AND MATERIAL. MAKE REPAIRS OR REPLACEMENTS WITHOUT ANY ADDITIONAL COSTS TO THE OWNER.

PERFORM THE REMEDIAL WORK PROMPTLY, UPON WRITTEN NOTICE FROM THE ENGINEER OR OWNER.

AT THE TIME OF SUBSTANTIAL COMPLETION, DELIVER TO THE OWNER ALL WARRANTIES, IN WRITING AND PROPERLY EXECUTED, INCLUDING TERM LIMITS FOR WARRANTIES EXTENDING BEYOND THE ONE-YEAR PERIOD, EACH WARRANTY INSTRUMENT BEING REFERRED TO THE OWNER AND STATING THE COMMENCEMENT DATE AND TERM.

15B SPARE PARTS

FURNISH TO OWNER, WITH RECEIPT, THE SPARE PARTS TO INCLUDE FAUCET WASHERS AND O-RINGS, FLOWSHOWER REPAIR KITS AND WATER CLOSET TANK REPAIR KITS FOR THE FIXTURES FURNISHED FOR THIS PROJECT.

15B EXCAVATION AND BACKFILLING

PERFORM EXCAVATION AND BACKFILL REQUIRED FOR INSTALLATION OF UNDERGROUND WORK UNDER THIS CONTRACT. TRENCHES SHALL BE OF SUFFICIENT WIDTH, CRIB OR BRACE TRENCHES TO PREVENT CAVE-IN OR SETTLEMENT. DO NOT EXCAVATE TRENCHES CLOSE TO COLUMNS AND WALLS OF NEW BUILDING WITHOUT PRIOR CONSULTATION WITH THE ARCHITECT. USE PUMPING EQUIPMENT IF REQUIRED TO KEEP TRENCHES FREE OF WATER. BACKFILL TRENCHES IN MAXIMUM 6" LAYERS OF WELL-TAMPED DRY EARTH IN A MANNER TO PREVENT FUTURE SETTLEMENT.

EXCAVATION AS HEREIN SPECIFIED SHALL BE CLASSIFIED AS COMMON EXCAVATION. COMMON EXCAVATION SHALL COMPRISE THE SATISFACTORY REMOVAL AND DISPOSITION OF MATERIAL OF WHATEVER SUBSTANCES AND OF EVERY DESCRIPTION ENCOUNTERED, INCLUDING ROCK, IF ANY, WITHIN THE LIMITS OF THE WORK AS SPECIFIED AND SHOWN ON THE DRAWINGS. EXCAVATION SHALL BE PERFORMED TO THE LINES AND GRADES INDICATED ON THE DRAWINGS. EXCAVATED MATERIALS WHICH ARE CONSIDERED UNSUITABLE FOR BACKFILL, AND SURPLUS OF EXCAVATED MATERIAL WHICH IS NOT REQUIRED FOR BACKFILL, SHALL BE DISPOSED OF BY THE CONTRACTOR AT HIS OWN EXPENSE AND RESPONSIBILITY, AND TO THE SATISFACTION OF THE ARCHITECT.

15B COINCIDENTAL DAMAGE

CONTRACTOR SHALL REPAIR STREETS, SIDEWALKS, DRIVES, PAVING, WALLS AND FINISHES ETC. THAT HE DAMAGES IN THE COURSE OF THIS PROJECT. REPAIR MATERIALS SHALL MATCH EXISTING CONSTRUCTION. REPAIR WORK SHALL MEET REQUIREMENTS OF THE LOCAL AUTHORITIES HAVING JURISDICTION AND MEET THE SATISFACTION OF THE ARCHITECT.

15B CUTTING AND PATCHING

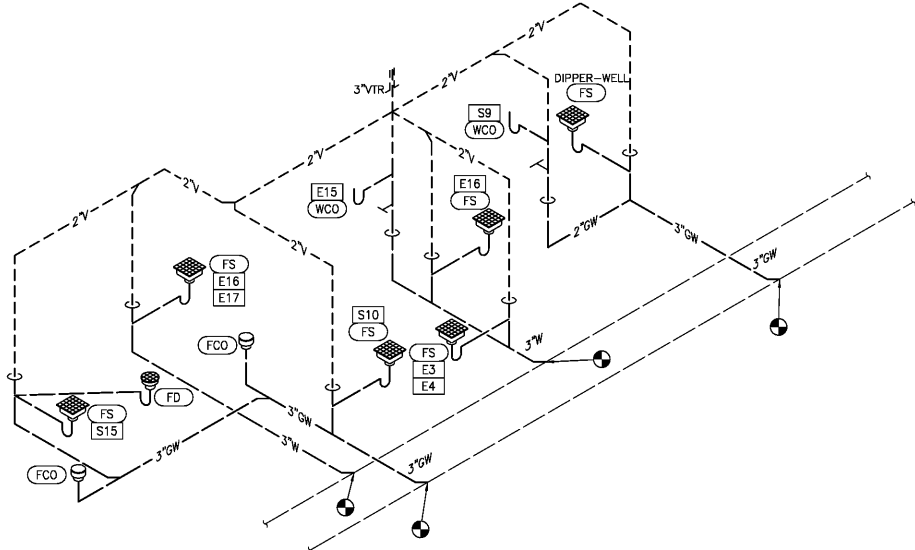
OBTAIN PERMISSION FROM THE ARCHITECT BEFORE CUTTING WALLS, FLOORS, CEILING, ETC. AS REQUIRED BY THE PROJECT. DO NOT DISTURB STRUCTURAL MEMBERS WITHOUT PRIOR APPROVAL FROM THE ARCHITECT. CUT HOLES AS SMALL AS POSSIBLE. GENERAL CONTRACTOR SHALL PATCH WALLS, FLOORS, ETC. AS REQUIRED BY WORK UNDER THIS SECTION. PATCHING SHALL MATCH ORIGINAL MATERIAL AND CONSTRUCTION. REPAIR AND RETINISH AREAS DISTURBED BY WORK TO THE CONDITION OF ADJOINING SURFACES IN A MANNER SATISFACTORY TO THE ARCHITECT.

15B ROUGH-IN

BEFORE STARTING CONSTRUCTION, COORDINATE WITH OTHER CONTRACTORS REGARDING ROUGH-IN WITH GENERAL CONSTRUCTION. CONCEAL PIPING, CONDUE AND ROUGH-IN EXCEPT IN UNFINISHED AREAS AND WHERE OTHERWISE SHOWN.

15B ACCESS DOORS

PROVIDE ACCESS DOORS IN CEILINGS AND WALLS WHERE INDICATED OR REQUIRED FOR ACCESS TO CONCEALED VALVES AND EQUIPMENT INSTALLED UNDER THIS SECTION. PROVIDE CONCEALED HINGES, SCREWDRIVER-TYPE LOCK, ANCHOR STRAPS, MANUFACTURED BY MILCOR, ZURN, TITUS, OR EQUAL. OBTAIN ARCHITECT'S APPROVAL OF TYPE, SIZE, LOCATION, AND COLOR BEFORE ORDERING.



1 PLUMBING WASTE & VENT RISER DIAGRAM
SCALE: NONE

Order Plans @ WWH

RUN RUN DESIGN

PROJECT NAME AND LOCATION :



STORE #785
975 W. POPLAR AVENUE
COLLIERVILLE, TN 38017

THIS DRAWING AND ITS CONTENTS ARE CONSIDERED INSTRUMENTS OF SERVICE AS SUCH THEY ARE COPYRIGHTED PROPERTY OF RUN RUN DESIGN, LLC. THE USE OF THESE DRAWINGS ARE LIMITED TO THIS SPECIFIC PROJECT AND ARE NOT TO BE OTHERWISE REPRODUCED IN ANY WAY OR USED FOR SUPPLEMENTAL LOCATIONS WITHOUT WRITTEN PERMISSION FROM RUN RUN DESIGN, LLC.

DRAWING REVISIONS:

no.	distribution	date
A	ISSUE DATE	12.21.17
B	SUBMITTAL DATE	--
no.	revision	date
1	--	--
2	--	--
3	--	--

SHEET NAME:
PLUMBING RISER DIAGRAMS

BID SET

project no:
17-085

dwg no:
P4