

PROJECT NAME AND LOCATION :



STORE #785
975 W. POPLAR AVENUE
COLLIERVILLE, TN 38017

THIS DRAWING AND ITS CONTENTS ARE CONSIDERED INSTRUMENTS OF SERVICE AS SUCH THEY ARE COPYRIGHTED PROPERTY OF RUN RUN DESIGN, LLC. THE USE OF THESE DRAWINGS ARE LIMITED TO THIS SPECIFIC PROJECT AND ARE NOT TO BE OTHERWISE REPRODUCED IN ANY WAY OR USED FOR SUPPLEMENTAL LOCATIONS WITHOUT WRITTEN PERMISSION FROM RUN RUN DESIGN, LLC.

DRAWING REVISIONS:

no.	distribution	date
A	ISSUE DATE	12.21.17
B	SUBMITTAL DATE	--

no.	revision	date
1	--	--
2	--	--
3	--	--

SHEET NAME:
PLUMBING FLOOR PLANS

BID SET

project no: 17-085
dwg no: P2

PLUMBING SYMBOLS

ANNOTATION

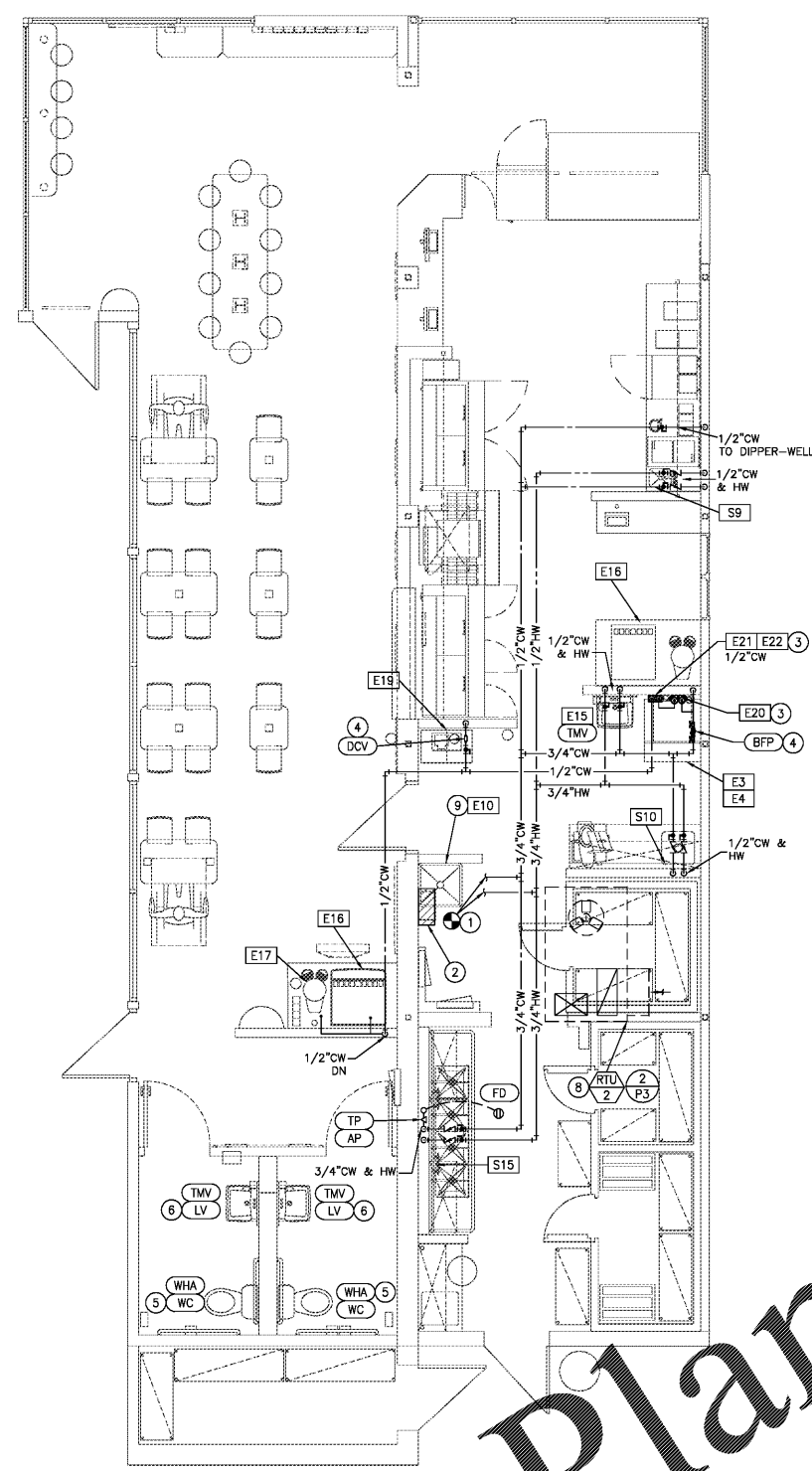
- ① PLUMBING PLAN NOTE CALLOUT
- ① PLUMBING EQUIPMENT DESIGNATION. (CONTRACTOR FURNISHED AND INSTALLED). REFER TO PLUMBING FIXTURE OR EQUIPMENT SCHEDULES
- ① EQUIPMENT DESIGNATION (OWNER FURNISHED, CONTRACTOR INSTALLED, SEE KITCHEN EQUIPMENT SCHEDULE FOR SPECIFICATIONS)
- RTU ① MECHANICAL EQUIPMENT DESIGNATION (CONTRACTOR FURNISHED AND INSTALLED UNLESS NOTED OTHERWISE)
- ① CONNECTION POINT OF NEW WORK TO EXISTING
- ① P1 DETAIL REFERENCE UPPER NUMBER INDICATES DETAIL NUMBER LOWER NUMBER INDICATES SHEET NUMBER

ABBREVIATIONS

AFF	ABOVE FINISHED FLOOR	ND	NORMALLY CLOSED
AFG	ABOVE FINISHED GRADE	N/O	NORMALLY OPEN
AHU	AIR HANDLING UNIT	ORD	OVERFLOW ROOF DRAIN
BFF	BELOW FINISHED FLOOR	POI	PLUMBING DRAINAGE INSTITUTE
BFG	BELOW FINISHED GRADE	PVC	POLYVINYL CHLORIDE
BOP	BOTTOM OF PIPE	PRV	PRESSURE REDUCING VALVE
BOS	BOTTOM OF STRUCTURE	RD	ROOF DRAIN
BTU	BRITISH THERMAL UNIT	RPM	REVOLUTIONS PER MINUTE
CPVC	CHLORINATED POLYVINYL CHLORIDE	RTU	ROOF-TOP UNIT
DCV	DOUBLE CHECK VALVE	RTU	ROOF-TOP UNIT
DS	DOWNSTREAM	SF	SQUARE FEET, SUPPLY FAN
ETR	EXISTING TO REMAIN	SP	SUMP PUMP
EWC	ELECTRIC WATER COOLER	SS	STAINLESS STEEL, SANITARY
FD	FLOOR DRAIN	SSW	SEWER, SOIL STACK
FFA	FROM FLOOR ABOVE	TDH	TOTAL DYNAMIC HEAD
FFB	FROM FLOOR BELOW	TFA	TO FLOOR ABOVE
FF	FINISHED FLOOR	TFB	TO FLOOR BELOW
FL	FLOOR LINE	TYP	TYPICAL
FLA	FULL LOAD AMPS	UL	UNDERWRITERS LABORATORIES,
FLR	FLOOR	UNC	UNLESS NOTED OTHERWISE
GPM	GALLONS PER MINUTE	UPS	UNINTERRUPTIBLE POWER SUPPLY
HD	HEAD, HUB DRAIN	V	VOLT(S)
IE	INVERT ELEVATION	VCP	VITRIFIED CLAY PIPE
IN WC	INCHES OF WATER COLUMN	VST	VENT STACK
JB	JUNCTION BOX	VTR	VENT THROUGH ROOF
J-BOX	JUNCTION BOX	W/	WITH
KW	KILOWATT	W/O	WITHOUT
MAU	MAKE-UP AIR UNIT	WC	WATER COLUMN
MAX	MAXIMUM	WS	WASTE STACK
MBH	1000 BTU PER HOUR	WSFU	WATER SUPPLY FIXTURE UNIT

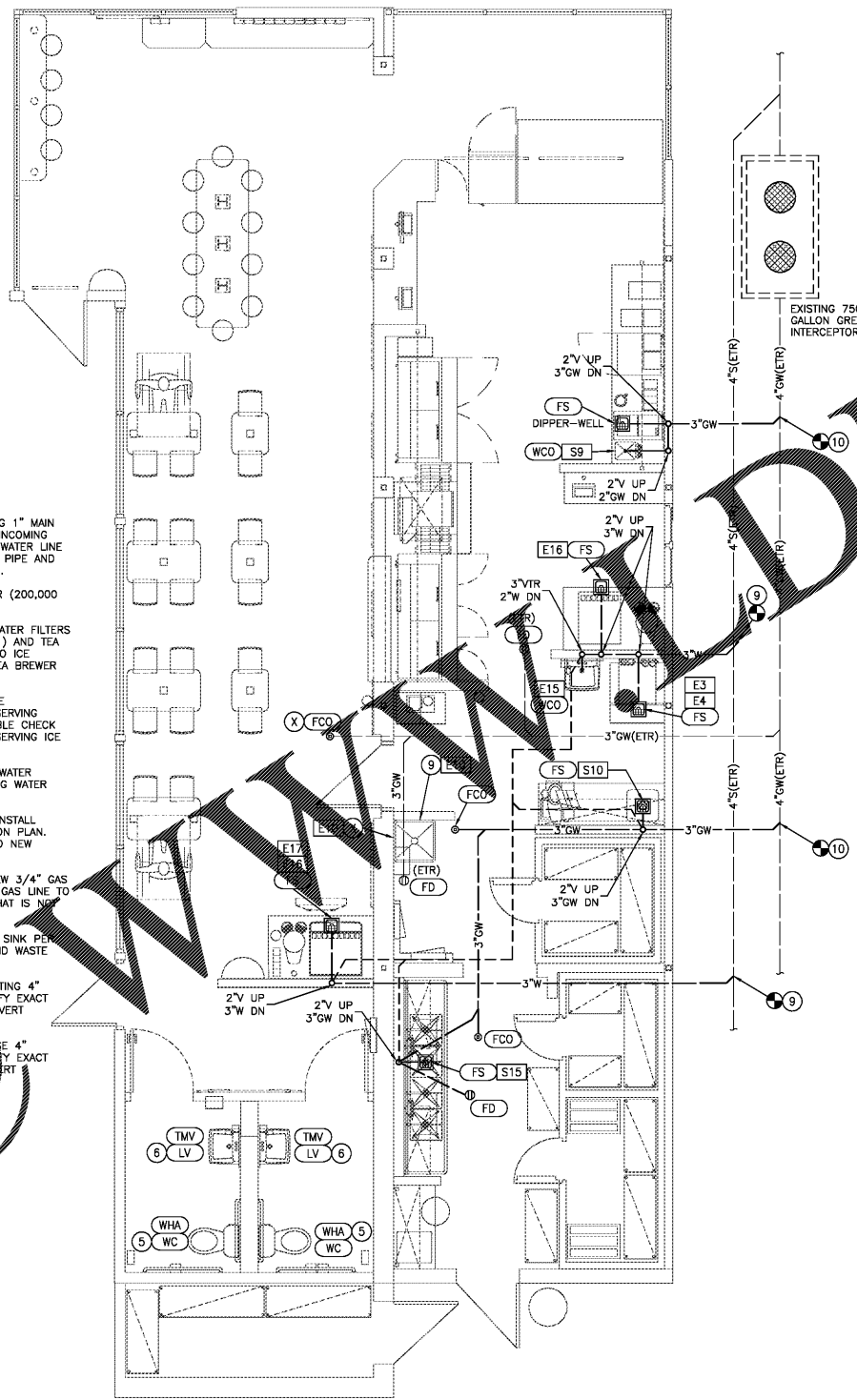
PIPING

- DOMESTIC COLD WATER (CW)
- DOMESTIC HOT WATER (HW)
- T TRAP PRIMER LINE (T)
- S SOIL PIPING - ABOVE FLOOR (S)
- S SOIL PIPING - BELOW FLOOR (S)
- W WASTE PIPING - ABOVE FLOOR (W)
- W WASTE PIPING - BELOW FLOOR (W)
- GW GREASE WASTE - ABOVE FLOOR (GW)
- GW GREASE WASTE - BELOW FLOOR (GW)
- VBG VENT BELOW GRADE (VBG)
- VBF VENT BELOW FLOOR (VBF)
- CD CONDENSATE DRAIN (CD)
- G NATURAL GAS (G)
- — — — — EXISTING PIPING TO REMAIN
- V VENT PIPING (V)
- SQUARE FLOOR DRAIN (FS), SIZE & TYPE
- ROUND FLOOR DRAIN (FD), SIZE & TYPE
- BALL VALVE
- CONTROL VALVE
- SHUTOFF VALVE
- CHECK VALVE
- UNION
- CAP
- WALL CLEANOUT (WCO)
- FLOOR CLEANOUT (FCO)
- EXTERIOR CLEANOUT (ECO)
- ELBOW UP
- ELBOW DOWN
- TEE UP
- TEE DOWN
- ELBOW UP WITH SHUT-OFF VALVE (SOV)
- ELBOW DOWN WITH SHUT-OFF VALVE (SOV)
- TEE UP WITH SHUT-OFF VALVE (SOV)
- TEE DOWN WITH SHUT-OFF VALVE (SOV)
- "A" WATER HAMMER ARRESTER (WHA) WITH PDI SIZES, (A, B, C, D, & E)
- GAS COCK
- TRAP PRIMER
- TRAP PRIMER WITH DISTRIBUTION UNIT



② WATER & GAS PIPING PLAN
1/4" = 1'-0"

- PLUMBING PLAN NOTES:**
- ① ROUTE NEW 1" COLD WATER LINE TO EXISTING 1" MAIN WATER SERVICE. VERIFY EXACT LOCATION OF INCOMING WATER SERVICE LINE. CONNECT NEW 1" HOT WATER LINE TO THE EXISTING HOT WATER HEATER OUTLET PIPE AND ROUTE TO NEW FIXTURES INDICATED ON PLAN.
 - ② EXISTING TO REMAIN TANKLESS WATER HEATER (200,000 BTU) WITH NATURAL GAS SERVICE.
 - ③ NEW 3/4" COLD WATER DOWN IN WALL TO WATER FILTERS FOR ICE MACHINE (E20), SODA MACHINE (E21) AND TEA BREWER THEN 1/2" FILTERED WATER LINES TO ICE MACHINE (E3A), SODA MACHINE (E16) AND TEA BREWER (E17).
 - ④ INSTALL STAINLESS STEEL REDUCED PRESSURE BACKFLOW ASSEMBLY "DCV" AT WATER LINE SERVING SODA CARBONATOR. INSTALL LEAD FREE DOUBLE CHECK BACKFLOW ASSEMBLY "BFP" AT WATER LINE SERVING ICE MACHINE AND THE WATER FILTER.
 - ⑤ REPLACE EXISTING WATER CLOSET WITH NEW WATER CLOSET PER SPECIFICATION. CONNECT EXISTING WATER AND WASTE LINES TO NEW WATER CLOSET.
 - ⑥ REMOVE EXISTING RESTROOM LAVATORY AND INSTALL NEW LAVATORY IN NEW LOCATION INDICATED ON PLAN. EXTEND EXISTING WATER AND WASTE LINES TO NEW LAVATORY LOCATION.
 - ⑦ NEW GAS FIRED ROOF TOP UNIT. PROVIDE NEW 3/4" GAS LINE TO ROOF TOP UNIT AND CONNECT NEW GAS LINE TO AN EXISTING GAS LINE, ABOVE THE CEILING, THAT IS NOT LESS THAN 1-1/4" IN DIAMETER.
 - ⑧ REPLACE EXISTING MOP SINK WITH NEW MOP SINK PER SPECIFICATIONS. CONNECT EXISTING WATER AND WASTE LINES TO NEW MOP SINK.
 - ⑨ CONNECT NEW SANITARY WASTE LINE TO EXISTING 4" SANITARY WASTE. CONTRACTOR TO FIELD VERIFY EXACT LOCATION OF EXISTING SANITARY LINE AND INVERT ELEVATION.
 - ⑩ CONNECT NEW GREASE WASTE LINE TO GREASE 4" SANITARY WASTE. CONTRACTOR TO FIELD VERIFY EXACT LOCATION OF EXISTING GREASE LINE AND INVERT ELEVATION.



① SANITARY & VENT PIPING PLAN
1/4" = 1'-0"

CONTRACTOR NOTE:
LOCATION OF EXISTING WASTE LINES SHOWN ON PLAN ARE BASED ON PREVIOUSLY PERMITTED PLANS FROM 1993. ACTUAL FIELD CONDITIONS MAY DIFFER. CONTRACTOR TO SCAN EXISTING FLOOR AND EXTERIOR GRADE TO DETERMINE EXACT LOCATION OF ALL WASTE LINES. CONTRACTOR SHALL DETERMINE OPTIMAL ROUTING OF WASTE LINES AND PROVIDE A SKETCH TO ENGINEER OF RECORD AND WHICH WICH FOR APPROVAL PRIOR TO INSTALLATION.

Order Plans