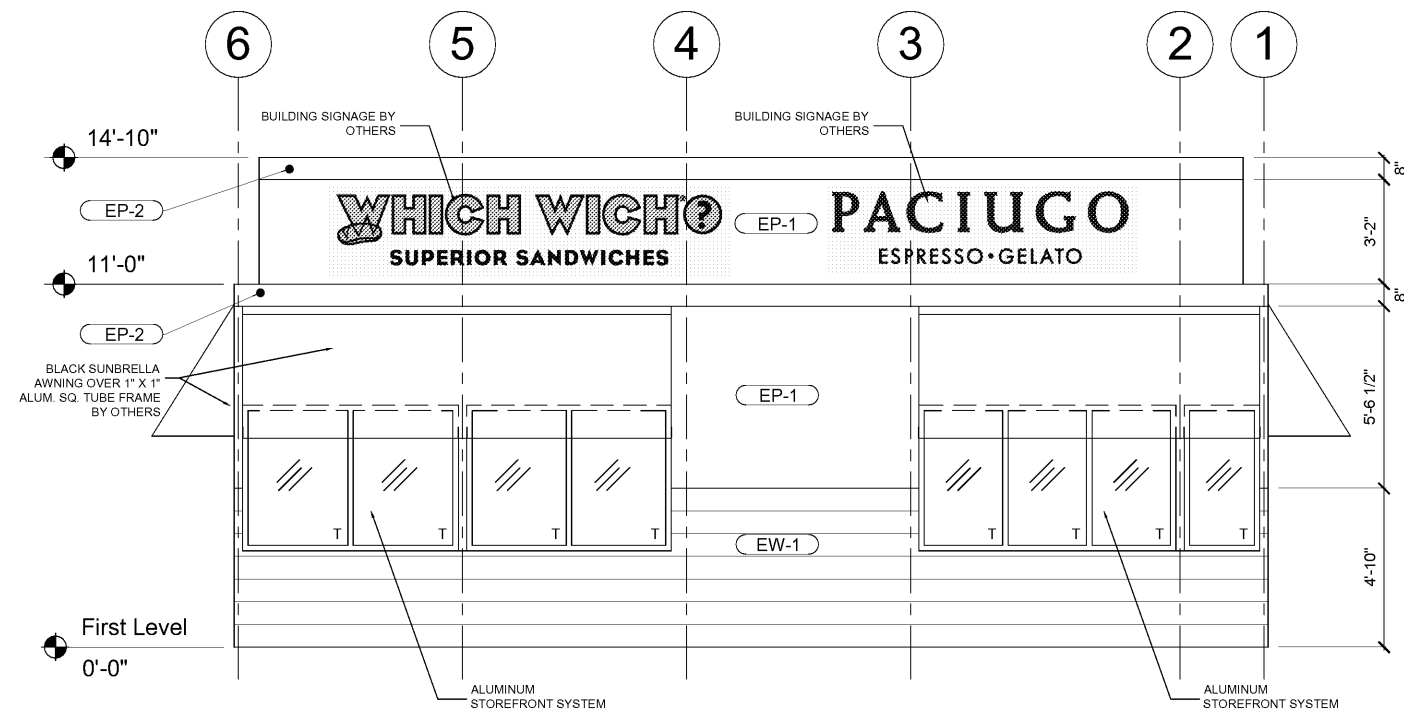
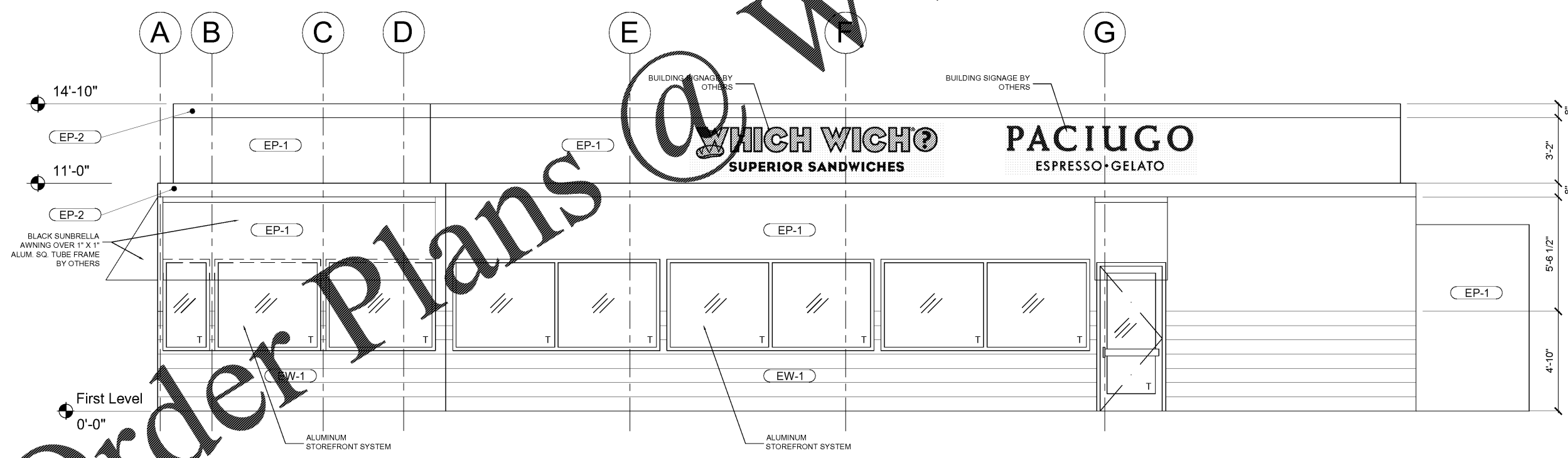


EXTERIOR FINISH MATERIALS			
MARK	DESCRIPTION	MFG. & SPEC	REMARKS
SIDING PANEL			
EW-1	SMOOTH LAP SIDING	HARDPLANK LAP SIDING, SMOOTH, "NIGHT GRAY", 8.25" WIDTH	INSTALL PER MFG SPECIFICATIONS
PAINT			
EP-1	PREMIUM EXTERIOR PAINT	BEHR "WHITE"	REFER TO ELEVATIONS FOR LOCATIONS
EP-2	PREMIUM EXTERIOR PAINT	BEHR "BLACK"	CLASS "A" FIRE RATING. REFER TO ELEVATIONS FOR LOCATIONS



1 SOUTH ELEVATION
SCALE: 3/8" = 1'-0"



2 EAST ELEVATION
SCALE: 3/8" = 1'-0"

RUN RUN DESIGN

PROJECT NAME AND LOCATION :



STORE #785
975 W. POPLAR AVENUE
COLLIERVILLE, TN 38017

THIS DRAWING AND ITS CONTENTS ARE CONSIDERED INSTRUMENTS OF SERVICE AS SUCH THEY ARE COPYRIGHTED PROPERTY OF RUN RUN DESIGN, LLC. THE USE OF THESE DRAWINGS ARE LIMITED TO THIS SPECIFIC PROJECT AND ARE NOT TO BE OTHERWISE REPRODUCED IN ANY WAY OR USED FOR SUPPLEMENTAL LOCATIONS WITHOUT WRITTEN PERMISSION FROM RUN RUN DESIGN, LLC.

DRAWING REVISIONS:		
no.	distribution	date
A	ISSUE DATE	05.31.18
B	SUBMITTAL DATE	-
no.	revision	date
1	-	-
2	-	-
3	-	-

SHEET NAME:
EXTERIOR ELEVATIONS & FINISH SCHEDULE

BID SET	project no: 17-085
	dwg no: A4.0

Order Plans

WWW.LDILine.com