

WHICH WICH 2017 LIGHTING FIXTURE SCHEDULE

SYMBOL	FIXTURE	LOCATION	NOTES
A	DESCRIPTION: 6" LED RECESSED W/ BLACK RING	DINING AREA	--
B	DESCRIPTION: 6" LED RECESSED W/ WHITE RING	RESTROOMS / ABOVE SODA MACHINE	--
D	DESCRIPTION: MINI UNIVERSAL TRACK HEAD - BLACK	DINING AREA	--
E	DESCRIPTION: MINI UNIVERSAL TRACK & LIVE FEED END - BLACK	DINING AREA	--
F	DESCRIPTION: 2X4 RECESSED TROFFER 3-LAMP	KITCHEN	"EM" EMERGENCY BALLAST "FIELD INSTALL"
H	DESCRIPTION: 2X2 RECESSED TROFFER 2-LAMP	SERVICE AREA	"EM" EMERGENCY BALLAST "FIELD INSTALL"
X	DESCRIPTION: EXIT SIGN - WHITE BODY WIRED LETTERS	EXIT(S)	--
Y	DESCRIPTION: EMERGENCY BUG-EYE - WHITE	AS SHOWN ON RCP	--
Z	DESCRIPTION: EMERGENCY RECESSED - WHITE	AS SHOWN ON RCP	--

NOTES:
 1. LUMINAIRES & LAMPS FURNISHED BY VILLA LIGHTING SUPPLY:
 DEREK VICKROY
 2929 CHOUTEAU AVENUE
 ST. LOUIS, MO 63103
 P: 214 633 0654, EMAIL: derek.vickroy@villalighting.com
 2. ALL FIXTURE TYPES MAY NOT BE USED
 3. REFER TO ARCHITECTURAL INTERIOR ELEVATIONS FOR FIXTURE MOUNTING HEIGHTS.
 4. THE ELECTRICAL CONTRACTOR SHALL BE RESPONSIBLE FOR RECEIVING, STORAGE, INSTALLATION, AND WIRING OF LIGHT FIXTURES.
 5. THE ELECTRICAL CONTRACTOR SHALL REPORT ANY DAMAGED LIGHT FIXTURES OR MISSING VILLA LIGHTING WITHIN 48 HOURS OF RECEIPT OF LIGHT FIXTURE PACKAGE.
 6. LIGHTING TRIM TO MATCH CEILING COLOR. (BLACK CEILING = BLACK TRIM, WHITE CEILING = WHITE TRIM)

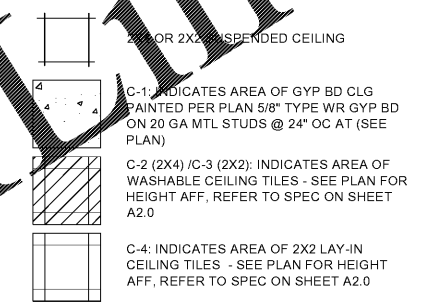
GENERAL NOTES

- A. ALL GRILLES/DIFFUSERS TO MATCH CEILING TILES - SEE MECHANICAL SHEETS FOR EXACT LOCATION OF DIFFUSERS.
- B. SEE ELECTRICAL SHEETS FOR LIGHTING SPECIFICATIONS AND EMERGENCY PACK LOCATIONS.
- C. EXTERIOR SIGN UNDER SEPARATE PERMIT - PROVIDED BY SIGN COMPANY AND INSTALLED BY SIGN COMPANY.
- D. ALL LIGHTS IN THE PREPARATION AREA, STORAGE AREA, DISHWASH AREA, WALK-IN REFRIGERATOR, AND FREEZER MUST HAVE SHATTERPROOF COVERS.
- E. SIGN MANUFACTURER TO SUBMIT TO LANDLORD AS REQUIRED. DETAILED CUT SHEETS FOR MAIN STOREFRONT SIGN. LANDLORD MUST APPROVE ALL SIGNS IN WRITING PRIOR TO FABRICATION, AS REQUIRED.
- F. REFER TO SHEET AS.0 FOR SIGNAGE (INTERIOR (G-1 THROUGH G-6)) AND INTERIOR DECOR (ID1-ID5) SPECIFICATIONS.

KEYNOTES

- 1. NO CEILING ABOVE WALK-IN COOLER/FREEZER
- 2. EXHAUST PLENUM

CEILING LEGEND

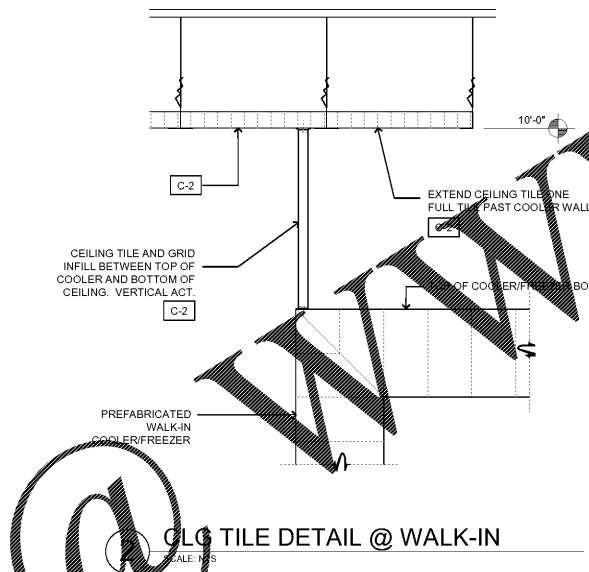
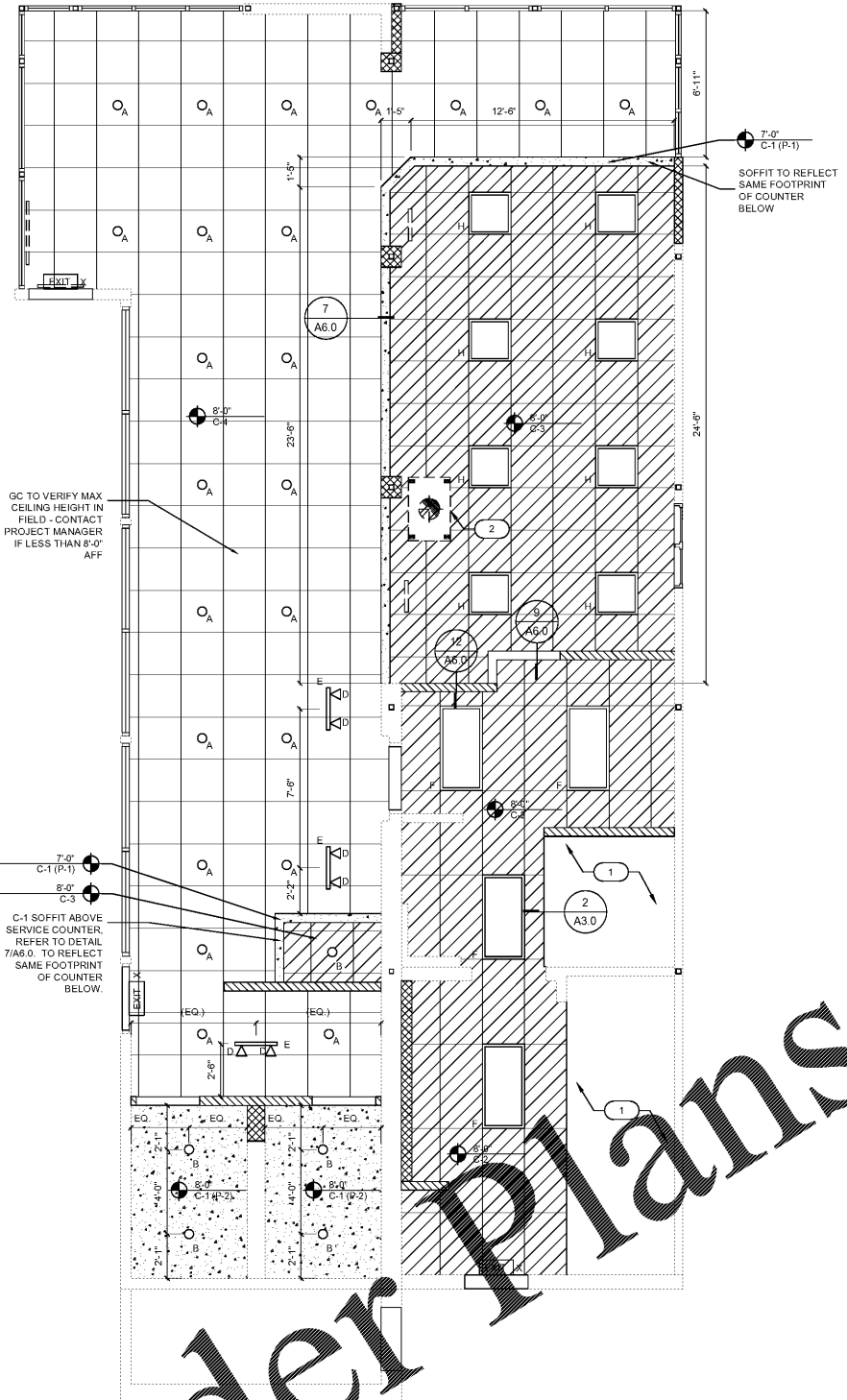


NOTES:
 1. ALL CEILING DEVICES INCLUDING LIGHTING & HVAC IS NEW, UNLESS NOTED OTHERWISE.
 2. SEE ELECTRICAL AND MECHANICAL DRAWINGS FOR ADDITIONAL INFORMATION.

STUD GAGE SCHEDULE

- A. TABLE BELOW IS BASED ON UNIVERSAL INDUSTRIES, UNIMAST (USG) CORPORATION'S LIMITING HEIGHT TABLE FOR EMBRACED STUDS SPACED 16" AND 24" O.C. (SYSTEM FOLDER SA-923-1990 EDITION), REQUIREMENT FOR 5 PSF LATERAL PRESSURE AND 1/240 ALLOWABLE DEFLECTION FOR FLEXIBLE FINISHES, WITH 1 LAYER OF GYP. BD. PER SIDE OF STUD.
- B. SCHEDULED HEIGHTS MAY BE INCREASED BY 50% WHERE THE STUDS ARE DIAGONALLY BRACED AT THE MAXIMUM HEIGHT POINT TO THE STRUCTURE ABOVE @ 4'-0" O.C.
- C. CAUTION! WHEN USING STUDS MANUFACTURED BY A COMPANY OTHER THAN USG, VERIFY MANUFACTURERS STUD STRENGTH AND LIMITING HEIGHT, ADJUST GAUGE AND MAXIMUM HEIGHT RECOMMENDED BY MANUFACTURERS CURRENT PRINTED SPECIFICATION.

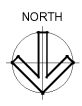
STUD WIDTH	STUD TYPE	STUD GAUGE	STUD SPACINGS	MAX HEIGHT
1-5/8"	1585T25	25	16"	9'-6"
	1585T25	25	24"	7'-3"
2-1/2"	2125T25	25	16"	12'-6"
	2125T25	25	24"	10'-9"
	2125T22	22	16"	13'-0"
	2125T22	22	24"	11'-6"
	2125T20	20	16"	14'-0"
3-5/8"	3585T25	25	16"	16'-0"
	3585T25	25	24"	13'-6"
	3585T22	22	16"	17'-3"
	3585T22	22	24"	15'-0"
	3585T20	20	16"	18'-3"
6"	6005T25	25	16"	20'-0"
	6005T25	25	24"	15'-0"



Order Plans

REFLECTED CEILING PLAN

SCALE: 1/4" = 1'-0"



RUN RUN DESIGN

PROJECT NAME AND LOCATION :



STORE #785
 975 W. POPLAR AVENUE
 COLLIERVILLE, TN 38017

THIS DRAWING AND ITS CONTENTS ARE CONSIDERED INSTRUMENTS OF SERVICE AS SUCH THEY ARE COPYRIGHTED PROPERTY OF RUN RUN DESIGN, LLC. THE USE OF THESE DRAWINGS ARE LIMITED TO THIS SPECIFIC PROJECT AND ARE NOT TO BE OTHERWISE REPRODUCED IN ANY WAY OR USED FOR SUPPLEMENTAL LOCATIONS WITHOUT WRITTEN PERMISSION FROM RUN RUN DESIGN, LLC.

DRAWING REVISIONS:

no.	distribution	date
A	ISSUE DATE	05/31/18
B	SUBMITTAL DATE	--

no.	revision	date
1	--	--
2	--	--
3	--	--

SHEET NAME:
REFLECTED CEILING PLAN

BID SET

project no: 17-085
 dwg no: **A3.0**