



STORE #785
975 W. POPLAR AVENUE
COLLIERVILLE, TN 38017

THIS DRAWING AND ITS CONTENTS ARE CONSIDERED INSTRUMENTS OF SERVICE AS SUCH THEY ARE COPYRIGHTED PROPERTY OF RUN RUN DESIGN, LLC. THE USE OF THESE DRAWINGS IS LIMITED TO THIS SPECIFIC PROJECT AND ARE NOT TO BE OTHERWISE REPRODUCED IN ANY WAY OR USED FOR SUPPLEMENTAL LOCATIONS WITHOUT WRITTEN PERMISSION FROM RUN RUN DESIGN, LLC.

DRAWING REVISIONS:

no.	distribution	date
A	ISSUE DATE	05/31/18
B	SUBMITTAL DATE	--
1	revision	--
2	--	--
3	--	--

SHEET NAME:
PROPOSED FLOOR PLAN

BID SET

project no: 17-085
dwg no: **A2.0**

GENERAL NOTES

- ALL DIMENSIONS ARE FROM FACE OF DRYWALL, UNLESS OTHERWISE NOTED.
- ALL GYPSUM BOARD USED SHALL BE 1/2" OR 5/8" TYPE "X" FIRE TAPED. DEMISING PARTITIONS SHALL BE OF FIRE CODE "X" SHEETROCK, TAPED AND SEALED TO DECK ABOVE.
- ALL PLYWOOD, PLYWOOD BACKING, PARTICLE BOARD, WOOD BLOCKING, AND FRAMING USED SHALL BE FIRE RETARDANT & STAMPED NON-COMBUSTIBLE.
- PLACE AND FINISH ALL NEW MATERIALS SO AS TO PROVIDE A SMOOTH & INTEGRAL TRANSITION TO EXISTING FINISHES & MATERIALS.
- PROVIDE ADDITIONAL FRAMING/BRACING FOR ALL WALL MOUNTED EQUIPMENT. CHECK CUTSHEETS OF ALL EQUIPMENT PRIOR TO INSTALLATION.
- GENERAL CONTRACTOR TO PROVIDE REQUIRED FIRE EXTINGUISHER(S) PER CODE.
- FIRE SPRINKLERS: ADDITIONS & MODIFICATIONS AS REQUIRED BY CODE AND NFPA PAMPHLET #13. SPRINKLER HEADS CENTERED WITHIN CEILING BOARD. SPRINKLER HEADS AT GYPSUM BOARD CEILING MUST BE FULLY RECESSED AND COVERED WITH METAL PLATES FINISHED TO MATCH ADJACENT SURFACE. CENTER SPRINKLER HEADS IN CEILING WHERE APPLICABLE. ANY MODIFICATIONS TO BE DONE BY LICENSED AND SPECIFIED SPRINKLER CONTRACTOR. ALL COSTS FOR SPRINKLER RE-LOCATION TO CONFORM WITH FLOOR PLAN DESIGN ARE PROVIDED BY TENANT - WHEN APPLICABLE.
- SEE MECHANICAL AND ELECTRICAL SHEETS FOR ALL FIXTURE SPECIFICATIONS, SCHEDULING, AND SCHEDULED ITEMS. - VERIFY WITH EQ SHEETS FOR CONFLICTS.
- NEWLY INSTALLED RELOCATION DOORS MUST HAVE LEVER TYPE HANDLERS OR OTHER HANDLE WHICH WILL PERMIT OPERATION WITHOUT EXCESSIVE FORCE AND WHICH DOES NOT REQUIRE THE USER TO GRASP, PULL, PUSH OR TWIST TO OPERATE. PER WAC 512-002(A) (1) (C).
- ALL DOORS TO BE 52" MIN. CLEAR OPENING WHEN OPENED TO 90 DEGREE POSITION.
- FLOORS IN FOOD PREPARATION AREA, DISH WASHING AREA, SERVICE AREA, JANITORIAL AREA, STORAGE AREA, AND ANY AREA WHERE FIRE EQUIPMENT IS PLACED SHALL BE SMOOTH, EASILY CLEANABLE, WASHABLE, DURABLE, AND OF COMMERCIAL GRADE MATERIAL AND SHALL HAVE A MINIMUM 3/8" RADIUS INTEGRAL COVE BASE EXTENDING AT LEAST 4" UP THE WALL. GROUT SPACING FOR TILE SHALL NOT EXCEED 1/4" AND SHALL BE SEALED. NOT USED.
- TENANTS GC TO COMPLETE SITE VISIT AND VERIFY ALL DIMENSIONS AND EXISTING CONDITIONS - GC TO REVIEW TENANT'S LEASE DURING BID PROCESS TO DETERMINE RESPONSIBILITIES.
- FLOOR SINKS SHALL BE INSTALLED FLUSH WITH THE FLOOR SURFACE AND BE LOCATED SO AS TO BE READILY ACCESSIBLE FOR CLEANING AND REPAIR.
- SUPPORT WIRING FOR LAY IN CEILING SHALL NOT BE ATTACHED TO ANY OF THE LANDLORD'S MECH. ELEC. PLUMB. OR FIRE PROTECTION PIPING OR EQUIPMENT.
- ALL EXITS SHALL BE OPERABLE FROM INTERIOR OF BUILDING WITHOUT THE USE OF A KEY OR SPECIAL KNOWLEDGE OR EFFORT.

SPECIALTIES

- GENERAL CONTRACTOR TO PROVIDE BLOCKING IN WALLS AS NEEDED FOR ALL WALL MOUNTED FIXTURES, SIGNS, MENU BOARD, ETC. PER DRAWINGS.
- USE FIRE TREATED WOOD FOR MISCELLANEOUS WOOD BLOCKING, ETC.
- USE STAINLESS STEEL WALL PANELS, CORNER GUARDS AND ANGLE STRIPS TO SEAL GAP TO WALL AT COOLER/FREEZER. (SEE W-2 AT WALL FINISHES)
- TABLE BASE HARDWARE
D.A. TABLE TOP LAG BOLTS: 1/2"x2" (4 PER BASE)
D.B. ANCHOR BOLTS: SIMPSON "WEDGEALL" MODEL # WA62500 (5/8"x5") COMES COMPLETE WITH NUTS AND WASHERS (4 PER BASE)

WALL LEGEND

- EXISTING WALL TO REMAIN. VERIFY CONDITION PATCH AND REPAIR TO LIKE NEW CONDITION - GC TO VERIFY FIRE RATING IF APPLICABLE
- EX: EXISTING WALL
- A1: NEW WALL
1 LAYER 5/8" GYPSUM BOARD EACH SIDE OVER 3 5/8" 20 GA METAL STUDS AT 16" O.C. TO CEILING. BRACE STUDS @ 4'-0" O.C.
- A2: NEW WALL
1 LAYER 5/8" GYPSUM BOARD EACH SIDE OVER 5 5/8" 20 GA METAL STUDS AT 16" O.C. TO CEILING. BRACE STUDS @ 4'-0" O.C.
- A3: NEW DIE WALL
1 LAYER 5/8" GYPSUM BOARD EACH SIDE OVER 5 5/8" 20 GA METAL STUDS AT 16" O.C. BRACE STUDS @ 4'-0" O.C. TOP OF WALL AT 4'-4". BUILT BY G.C. AND SKINNED WITH PORCELAIN TILE PER ELEVATIONS ON A4.0

NOTE: ALL EXPOSED CMU BLOCK MASONRY WALLS SHALL BE FURRED OUT WITH 1 1/2" METAL STUDS WITH GYP BOARD (TYP)

NOTE: DIMENSIONED TO FINISHED WALL.
NOTE: ALL EXTERIOR WALLS TO BE INSULATED.

KEYNOTES

- EXISTING EXTERIOR WALLS TO REMAIN - GC TO PATCH AND REPAIR FOR NEW FINISHES
- METAL SHELVING RACK - 5 TIER IN HEIGHT NOT TO EXCEED 6 FEET
- NEW FLOOR SINK
- RESTROOM HAND SINK
- 5" HC TURNING CIRCLE, MIN. CLEAR DIMENSION REQUIRED
- 4-COMPARTMENT SINK WITH (2) 18" INTEGRAL DRAIN BOARDS
- SERVICE COUNTER AT 34" AFF- CABINET SUPPLIER TO FURNISH SHOP DRAWINGS
- 24" JANITORIAL MOP SINK (SEE PLUMBING SHEETS)
- WATER HEATER (SEE PLUMBING SHEETS)
- ELECTRICAL PANELS - SEE ELECTRICAL SHEETS
- WALL-MOUNTED HAND SINK
- NOT USED
- PORTICO FLOORING THROUGHOUT KITCHEN & SERVICE AREA
- FIRE EXTINGUISHER
- STAINLESS STEEL PREP TABLE WITH SINK
- NOT USED
- HANDICAP GRAB BARS WITH BLOCKING - SEE DETAIL 4/A6.0
- NOT USED
- PORCELAIN TILE THROUGHOUT DINING ROOM, HALLWAY, AND RESTROOMS
- HANDSINK IN COUNTER WITH SPLASHGUARD BY STAINLESS STEEL FABRICATOR

FINISH SCHEDULE

SPACE	FLOOR	BASE	WALLS	CEILING
DINING ROOM	PT-1	F-1	PT-4	PT-2
SERVICE	PT-1	F-1	PT-4	PT-2
KITCHEN	PT-1	F-1	PT-4	PT-2
WALK-IN COOLER	PT-1	F-1	PT-4	PT-2
WALK-IN FREEZER	PT-1	F-1	PT-4	PT-2
RESTROOM	PT-1	F-1	PT-4	PT-2
HALLWAY	PT-1	F-1	PT-4	PT-2

INTERIOR FINISH MATERIALS

MARK	DESCRIPTION	MFG. & SPEC	REMARKS
PT-1	8" X 40" PORCELAIN TILE	CMC "MINDSET TAN" MAPEI ULTRAFLEX 2 GRAY THIN SET GROUT. 3/16" GROUT JOINT. INSTALL AT 1/3 PER TCNA.	USE W.R. GYPSUM BOARD AT ALL TILE. NOTE: 5/8" DBA-ROCK TO 12" (SERVICE AISLE, KITCHEN, RRS)
PT-2	4" X 8" PORCELAIN TILE	CMC "LUSION YELLOW" MAPEI 00 WHITE NON-SANDED GROUT. NO SPACERS / BUTT JOINT. INSTALL AS SUBWAY PATTERN.	USE W.R. GYPSUM BOARD AT ALL TILE. NOTE: 5/8" DBA-ROCK TO 12" (SERVICE AISLE, KITCHEN, RRS)
PT-3	6" X 6" PORCELAIN TILE	DAL-TILE ARCTIC WHITE - FIELD TILE BULLNOSE (S-4609) AT ALL OUTSIDE CORNERS, LATICRETE HYDRO BAN FLUID APPLIED MEMBRANE BELOW THINSET, 1/16" SPACERS W/ CHARCOAL COLORED GROUT	USE W.R. GYPSUM BOARD AT ALL TILE. NOTE: 5/8" DBA-ROCK TO 12" (SERVICE AISLE, KITCHEN, RRS)
PT-4	6" X 6" PORCELAIN TILE	DAL-TILE ARCTIC WHITE - SANITARY COVE S-3619T W/ SCR-L-3619T AT ALL OUTSIDE CORNERS. LATICRETE HYDRO BAN FLUID APPLIED TO MEMBRANE BELOW THINSET, 1/16" SPACERS W/ CHARCOAL COLORED GROUT	ALT. 6" X 6" SEMI-GLOSS WHITE TILE BULLNOSE TOP W/ SCHLUTER DILEX-AHKA-X - BRUSHED NICKEL ALUM WITH CORRECT INSIDE/OUTSIDE CORNER PIECES
F-1	PORTICO SYSTEMS	SAFE STEP PLUS BY PORTICO SYSTEMS - DARK GRAY. acarter@porticosystems.com; P. 864-527-3148.	THROUGHOUT SERVICE/KITCHEN - INSTALL WITH INTEGRAL 3/8" COVE BASE
B-1	STEEL COVE BASE	GALVANIZED STEEL COVE BASE PER DETAIL PROVIDED BY VENDOR. SOURCE: MILLWORK	@ LOW WALL ON SERVICE SIDE AND HALLWAY BASE
LAM-1	WHITE MELAMINE	HARDWOOD PLYWOOD WHITE MELAMINE (TIMBER PROD CO - GREEN-T HARDWOOD OR SIM)	AT DIE WALL FASCIA
W-1	F.R.P. (FIBER REINFORCED PLASTIC) PANELS	MARLITE, WHITE W/JOINT STRIPS. ATTACH WITH ADHESIVE AND SEAL TO TILE BASE.	INTERIOR FINISH CLASSIFICATION: CLASS "A" FIRE RATING, FLAME SPREAD INDEX 25, SMOKE DEVELOPED INDEX
W-2	18 GAUGE STAINLESS STEEL PANELS	NO. 3 MILL FINISH WITH JOINT TRIMS TO RUN VERTICAL WITHOUT HORIZONTAL JOINTS STRIPS FROM BASE TO CEILING. ATTACH WITH ADHESIVE SEAL TO TILE BASE.	INTERIOR FINISH CLASSIFICATION: CLASS "A" FIRE RATING, FLAME SPREAD INDEX 20, SMOKE DEVELOPED INDEX 300.
W-3	(E) BRICK TO REMAIN	(E) BRICK TO REMAIN - GC TO PATCH/REPAIR TO "LIKE-NEW CONDITION". PAINT PER ELEVATIONS.	WALLS - DINING ROOM REFER TO ELEVATIONS.
W-4	GYP BOARD	SMOOTH PAINTED	REFER TO ELEVATIONS FOR JOINT COLOR
C-1	GYP BOARD	SMOOTH PAINTED (PAINT P-2). 6" (R-19) INSULATION ABOVE CEILING.	REFER TO EXISTING CEILING PLAN FOR LOCATIONS.
C-2	24" X 48" SUSPENDED CEILING	VINYL FACED GYPSUM CORE LAY-IN PANELS (WHITE) WITH EXPOSED T-GRID (WHITE) ARMSTRONG OR EQUIV. 6" (R-19) INSULATION ABOVE CEILING.	CLASS "A" FIRE RATING.
C-3	24" X 24" SUSPENDED CEILING	VINYL FACED GYPSUM CORE LAY-IN PANELS (WHITE) WITH EXPOSED T-GRID (WHITE) BY ARMSTRONG OR EQUIV. 6" (R-19) INSULATION ABOVE CEILING.	CLASS "A" FIRE RATING.
C-4	(E) WOOD CEILING	(E) WOOD CEILING TO REMAIN. GC TO PATCH/REPAIR TO "LIKE-NEW CONDITION".	EXISTING TO REMAIN.
P-1	PRIMING INTERIOR WALLS	BEHR "SANDWICH" THREADY (3108-7). ONE BASE COAT, TWO FINISH COATS WITH ORANGE/LEMON PEEL TEXTURE.	CLASS "A" FIRE RATING. REFER TO ELEVATIONS FOR LOCATIONS.
P-2	PREMIUM SEMI-GLOSS WHITE PAINT	BENJAMIN MOORE "SUPER WHITE" #OC-152	CLASS "A" FIRE RATING. REFER TO ELEVATIONS FOR LOCATIONS.
P-3	SEMI-GLOSS PAINT	RUSOLEUM "PROFESSIONAL" GLOSS BLACK #7779	CLASS "C" FIRE RATING. LOCATION: TABLE BASES, RESTROOM DOORS, RAILING, ETC., AS SPECIFIED.

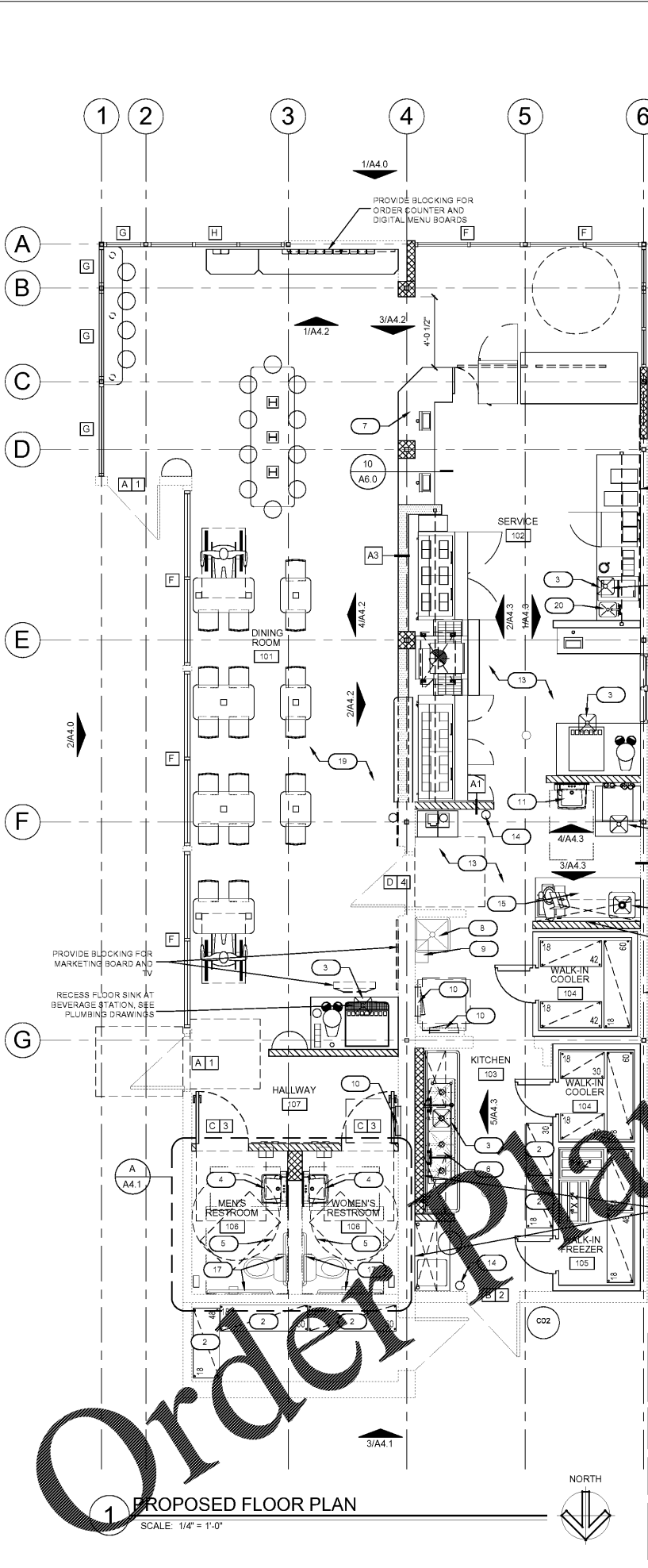
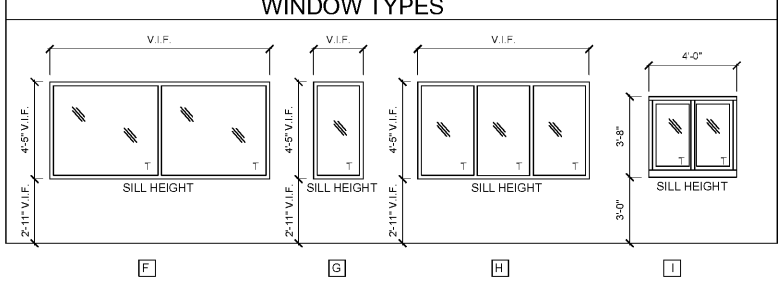
DOOR AND WINDOW SCHEDULE

MARK	QTY.	SIZE	DESCRIPTION	FRAME	FINISH	REMARKS
A X	2	3'-0" X 7'-0" X 1-3/4"	ENTRY DOOR	ALUM	PAINT P-3	NEW
B X	1	3'-0" X 7'-0" X 1-3/4"	EXIT DOOR	(E)	PAINT INSIDE P-3	EXISTING TO REMAIN, GC TO VERIFY
C X	2	3'-0" X 7'-0" X 1-3/4"	SOLID CORE, WOOD	METAL	PAINT P-3	MUST BE EQUIPPED WITH SELF-CLOSING DEVICES
D X	1	3'-0" X 7'-0" X 1-3/4"	SOLID CORE, WOOD	METAL	PAINT P-3	NEW
F	6	V.I.F.	GLASS	METAL	BLACK	CENTER GLAZED - SYSTEMGLASS 1" INSULATED SUNGUARD SN-68 LOW-E.
G	5	V.I.F.	GLASS	ALUM	BLACK	
H	1	V.I.F.	GLASS	ALUM	BLACK	
I	1	4'-0" X 3'-8" X 1/2"	DRIVE-THRU WINDOW	ALUM	BLACK	C.R. LAURENCE #DW1800P

NOTE: G.C. TO VERIFY DOORS INSTALLED IN LOCATION SHOWN ON PLAN AND TO BRING ANY DISCREPANCIES IN DOOR LOCATION TO WHICH WICH PROJECT MANAGER.

HARDWARE SCHEDULE

MARK	DESCRIPTION	MARK	DESCRIPTION
X1	STOREFRONT ENTRY DOOR - HARDWARE BY STOREFRONT SUPPLIERS TO INCLUDE CLOSERS, FLUSH BOLTS TOP AND BOTTOM, THRESHOLD AND WEATHER STRIPPING. PANIC BAR HARDWARE: CAL ROYAL LBR2260V3684, EXIT ALARM PANIC BAR (OR EQUAL) HARDWARE TO MEET ALL APPLICABLE CODES.	X3	RESTROOM DOORS - BUTTS: 1-1/2" PAIR, #TA2714, 4-1/2" X 4-1/2" MCKINNEY LEVERSET, #D40S-R-O, 626, SCHLAGE CLOSER: #4111, LCN (WH/OLD OPEN FEATURE) DOOR KICK PLATE: 8"x34" STAINLESS STEEL (1) EACH ON PUSH SIDE ONLY DOORSTOP: DELTANA DSLP316U15 (BRUSHED NICKEL FINISH)
X2	EXTERIOR DOOR - BUTTS: 1-1/2" PAIR, #TA2714, 4-1/2" X 4-1/2" MCKINNEY LEVERSET, #D40S-R-O, 626, SCHLAGE CLOSER: #4111, LCN (WH/OLD OPEN FEATURE) FISH EYE VIEWER: DOORSCOPE, R.B. ENTERPRISES, ALUMINUM. DOOR KICK PLATE: 8"x34" STAINLESS STEEL (INTERIOR), THRESHOLD: #171AX3/0, PEMCO DOOR SWEEP: #172AX3/0, REESE WEATHER-STRIPPING PANIC BAR HARDWARE: CAL ROYAL ALRM2200E036 EXIT ALARM PANIC BAR, WITH KEY DISARM (OR EQUAL)	X4	KITCHEN DOOR - BUTTS: 1-1/2" PAIR, #TA2714, 4-1/2" X 4-1/2" MCKINNEY LEVERSET, #D40S-R-O, 626, SCHLAGE CLOSER: #4111, LCN (WH/OLD OPEN FEATURE) DOOR KICK PLATE: 8"x34" STAINLESS STEEL (1) EACH ON PUSH SIDE ONLY



NOTE: DURING BID PROCESS - GC TO VISIT SITE & REVIEW TENANT'S LEASE TO CONFIRM RESPONSIBILITY AGREEMENT. GC RESPONSIBLE FOR ALL TI CONSTRUCTION I.E. CONCRETE POUR, ELECTRIC, PLUMBING, ROOF PENETRATIONS AND MECHANICAL ETC. ACCORDING TO LEASE

NOTE: GC TO VERIFY ALL EXISTING DIMENSIONS AND COLUMNS DURING BID AND ALERT PROJECT MANAGER IF DIFFERENT FROM PLAN.

NOTE: ONLY SINGLE SERVICE UTENSILS WILL BE USED IN THIS SPACE

NOTE: MAIN ENTRY/EXIT DOORS MAY BE KEY OPERATED FROM INTERIOR IF SIGNAGE WITH 1" LETTERING IS PROVIDED ON OR ADJACENT TO DOOR STATING "THIS DOOR TO REMAIN UNLOCKED WHEN BUILDING IS OCCUPIED".