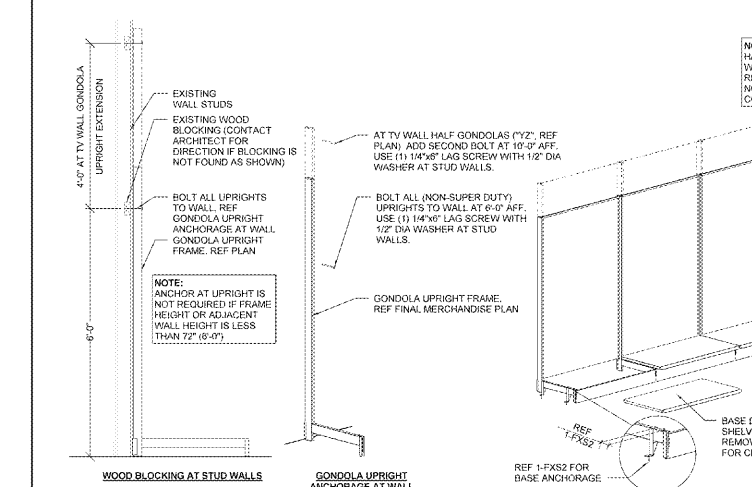


Order Plans @



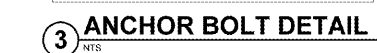
7 WALL ANCHOR AT HALF GONDOLA UPRIGHT

NOTE: HALF GONDOLAS SHALL BE ANCHORED TO WALL AS SHOWN TO SATISFY OWNER REQUIREMENTS. WALL ANCHORAGE IS NOT REQUIRED FOR SEISMIC DESIGN OR CODE COMPLIANCE.

- INSTALLATION NOTES: 1. GAPS BETWEEN SHELVES SHALL NOT EXCEED 5/8". 2. UPRIGHT DEFLECTION SHALL NOT EXCEED 1/8" IN A HORIZONTAL PLANE. 3. SHELVES SHALL NOT SLOPE DOWN TO THE FRONT DUE TO UPRIGHT DEFLECTION. 4. SHELVES ABOVE BASE DECK SHELVING LEVEL SHALL NOT EXTEND BEYOND BASE DECK SHELVING AT ANY TIME. 5. EXTENDERS SHALL NOT BE USED ON ANY HALF GONDOLA THAT WILL CREATE A HEIGHT OF 7'2" OR TALLER UNLESS IT IS ANCHORED TO THE WALL. ALL HALF GONDOLAS 7'2" OR TALLER MUST BE ANCHORED TO THE WALL AT 7'2" AFF. REF GONDOLA UPRIGHT ANCHORAGE AT WALL.



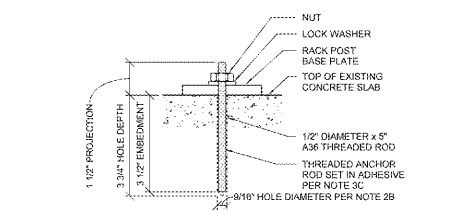
6 ANCHOR AT END CAP FRAMES



3 ANCHOR BOLT DETAIL

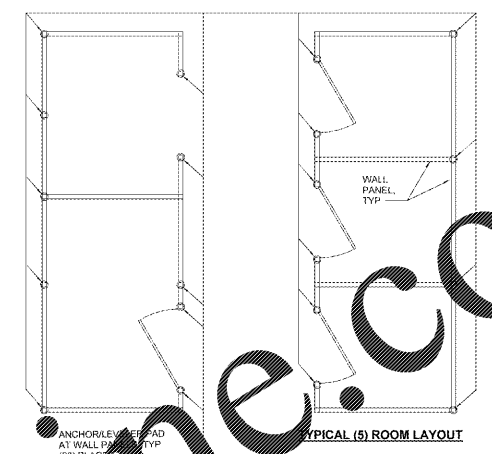


2 SALES FLOOR AND STORAGE AREA RACK ELEVATIONS



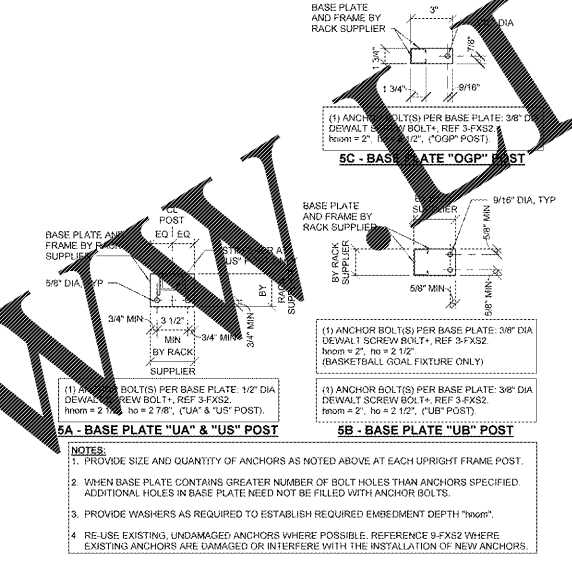
- DAMAGED ANCHOR REPAIR PROCEDURE NOTES: 1. DETERMINE DAMAGED BOLT TYPE: A. CONCRETE SCREW BOLTS - ONLY HEX-SHAPED HEAD OF BOLT IS VISIBLE ABOVE BASE PLATE. B. EXPANSION BOLTS - THREADED ROD AND NUT EXTEND ABOVE BASE PLATE. 2. REMOVE EXISTING DAMAGED ANCHOR BOLT: A. CONCRETE SCREW BOLTS - UNSCREW DAMAGED BOLT FROM CONCRETE SLAB. B. EXPANSION BOLTS - AFTER REMOVING RACK FRAME CUT BOLT FLUSH WITH CONCRETE SLAB AND DRILL OUT DAMAGED 1/2\"/>

5 TYPICAL ANCHOR AT RACK FRAMES

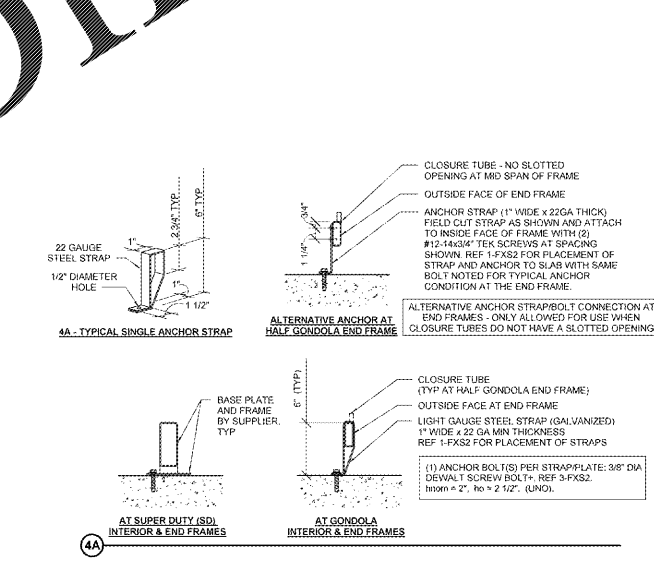


- NOTES: 1. REFER TO ANCHORAGE PLAN ON SHEET FXS1 FOR FINAL ORIENTATION OF ROOM LAYOUT. 2. REFER TO SUPPLIER FOR INSTALLATION DRAWINGS FOR DIMENSIONS AND FINAL DOOR ORIENTATION.

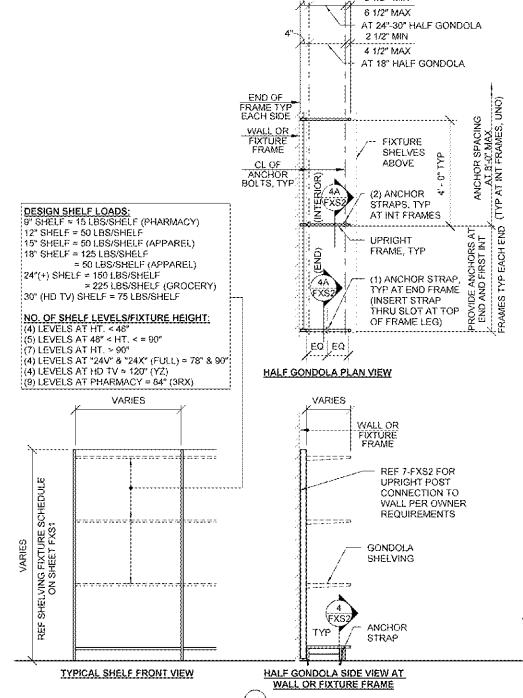
4 TYPICAL ANCHOR AT GONDOLA END FRAMES



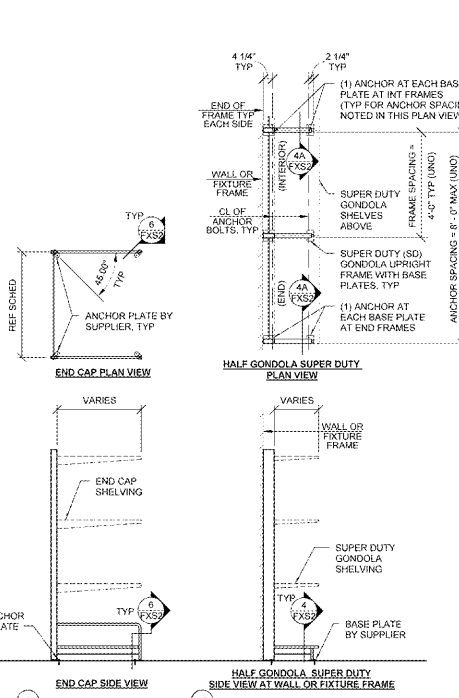
9 TYPICAL ANCHOR AT RACK FRAMES



4A TYPICAL ANCHOR AT GONDOLA END FRAMES



1 TYPICAL GONDOLA AND END CAP SHELVING ELEVATIONS



1A TYPICAL GONDOLA AND END CAP SHELVING ELEVATIONS

STIPULATION FOR THE DRAWING AND INFORMATION CONTAINED HEREIN IS LIMITED TO THE PROJECT AND SHALL NOT BE USED FOR ANY OTHER PROJECT WITHOUT THE WRITTEN CONSENT OF THE ARCHITECT. THE ARCHITECT SHALL NOT BE RESPONSIBLE FOR THE ACCURACY OF ANY INFORMATION OBTAINED FROM OTHER SOURCES. THE ARCHITECT SHALL NOT BE RESPONSIBLE FOR THE ACCURACY OF ANY INFORMATION OBTAINED FROM OTHER SOURCES. THE ARCHITECT SHALL NOT BE RESPONSIBLE FOR THE ACCURACY OF ANY INFORMATION OBTAINED FROM OTHER SOURCES.

CONSULTANTS JOHNSTON ASSOCIATES ARCHITECTS INC. 1000 N. GARDNER STREET SUITE 200 FORT WORTH, TX 76102-4400 PHONE: 817.339.8800 FAX: 817.339.8801

Walmart GORDONSVILLE, VA 164 CAMP CREEK HWY., LOUISA, VA 23093 STORE NO. 4892-223

ISSUE BLOCK table with columns for issue number, description, and date.

CHECKED BY: DGH DRAWN BY: ZFR PROTO CYCLE: 02/29/18 DOCUMENT DATE: 04/10/18 JBA PROJECT NO: 1715004852

OWNER PROVIDED INFORMATION NOT FOR REGULATORY APPROVAL OR PERMITTING

FIXTURE ANCHORAGE DETAILS

SHEET: FXS2