

KEYNOTES	
16.125	EXISTING FIXTURES TO REMAIN UNLESS OTHERWISE NOTED.
16.126	EXISTING LIGHT FIXTURES TO BE DEMOLISHED. CONNECT TO EXISTING CIRCUIT. E.C. SHALL VERIFY PRIOR TO ROUGH-IN THAT EXISTING CIRCUIT HAS SPARE CAPACITY TO ACCOMMODATE ADDITIONAL LOAD.
16.131	PROVIDE NEW SOLENOID OPERATED CIRCUIT BREAKER IN EXISTING PANELBOARD INDICATED. E.C. SHALL MATCH MANUFACTURER, TYPE AND AIC RATINGS OF EXISTING CIRCUIT BREAKERS. SUBSTITUTIONS NOT PERMITTED. E.C. SHALL VERIFY PRIOR TO ROUGH-IN THAT EXISTING PANELBOARD HAS SPARE CAPACITY TO ACCOMMODATE ADDITIONAL LOAD. REFER TO ENERGY MANAGEMENT.
16.141	PRODUCE BI-LEVEL SWITCHING BY SWITCHING THE OUTPUT OF EVERY OTHER LUMINAIRE. (CHECKERBOARD).

PRODUCE LIGHTING GENERAL NOTES

- TRACK LIGHTING INSTALLATION**
 - ORIENT TRACK TO UTILIZE LEFT FEED CURRENT LIMITERS.
 - PROVIDE POWER TO EACH FIXTURE ROW VIA 1/2" FLEXIBLE METAL CONDUIT.
 - FIXTURES SHALL BE ATTACHED DIRECTLY TO TRACK UTILIZING PROVIDED CONNECTORS.
 - TRACK IS TWO-CIRCUIT. STRIP FIXTURES SHALL BE CONNECTED TO ONE CIRCUIT AND CYLINDER FIXTURES SHALL BE CONNECTED TO OTHER CIRCUIT. CANS AND STRIPS CANNOT BE ON THE SAME CIRCUIT.
 - REFERENCE MANUFACTURER'S INSTALLATION INSTRUCTIONS FOR INFORMATION ON ATTACHING FIXTURES TO TRACK.
- TRACK LIGHTING MOUNTING HEIGHT CONSIDERATIONS**
 - UTILIZE PROVIDED AIRCRAFT TABLE PER MANUFACTURER'S RECOMMENDATIONS TO SUSPEND TRACK FOLLOWING CORRECT ALTERNATE FROM LIST BELOW. IF THERE ARE ANY OBSTACLES, SUSPEND TRACK TO A UNIFORM MOUNTING HEIGHT. DIMENSIONS TO MOUNT TRACK FROM OBSTRUCTION. DIMENSIONS TO POSSIBLE HEIGHT WHERE ALL ROWS ARE UNIFORM HEIGHT.
 - IF PRODUCE AREA GIRDER IS PERPENDICULAR TO TRACK AND BOTTOM OF GIRDER IS BELOW 19', TRACK SHALL RUN THROUGH GIRDER WEBBING AND BE SUSPENDED TO A UNIFORM HEIGHT JUST BELOW LOWEST POINT OF AREA BAR JOISTS. UNIFORMLY ADJUST ALL TRACK LOCATIONS TO ENSURE TYPE 40 STRIP IS RUNNING THROUGH GIRDER WEBBING.
 - IF PRODUCE AREA GIRDER IS PERPENDICULAR TO TRACK AND BOTTOM OF GIRDER IS ABOVE 19', SUSPEND TRACK TO A UNIFORM HEIGHT JUST BELOW GIRDER.
- TRACK LIGHTING TESTING**
 - UPON COMPLETION OF INSTALLATION, CONTRACTOR SHALL TEST PRODUCE LIGHTS FOR PROPER OPERATION.
 - ENSURE CORRECT SIZE CURRENT LIMITERS ARE INSTALLED ON EACH TRACK ROW PER PLANS.
 - ENSURE CYLINDER FIXTURES ARE CONNECTED TO THE SMALLER OF TWO CURRENT LIMITER SIZES ON EACH ROW.
 - ENSURE ALL CYLINDERS ARE ON THE SAME CIRCUIT(S).
 - ENSURE ALL STRIP FIXTURES ARE ON THE SAME CIRCUIT(S).

REDESIGN
 RETAIL DESIGN COLLABORATIVE
 1000 E. 12th St., Suite 200
 Atlanta, GA 30316
 404.525.3565
 info@rethink.com

CONSULTANTS
JASON C. ADAMS
 ARCHITECT
 1000 E. 12th St., Suite 200
 Atlanta, GA 30316
 404.525.3565
 jadam@rethink.com

Walmart
GORDONSVILLE, VA
 164 CAMP CREEK PKWY., LOUISA, VA 23093
 STORE NO.: 1652-223
 17-127-25 : PHOTO:
 143 SSGOR
 JOB NUMBER:
 Remodel Photo

ISSUE BLOCK

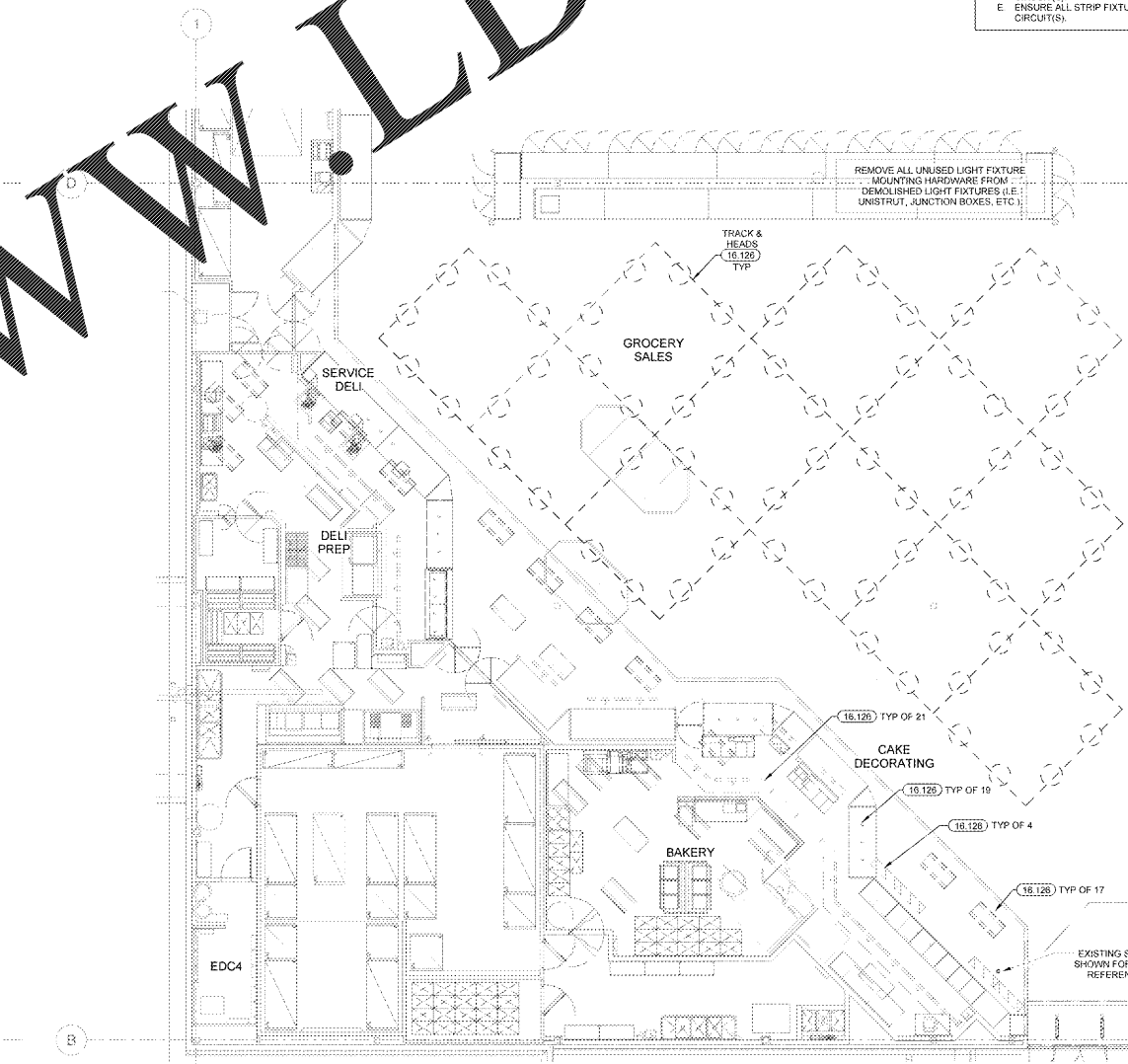
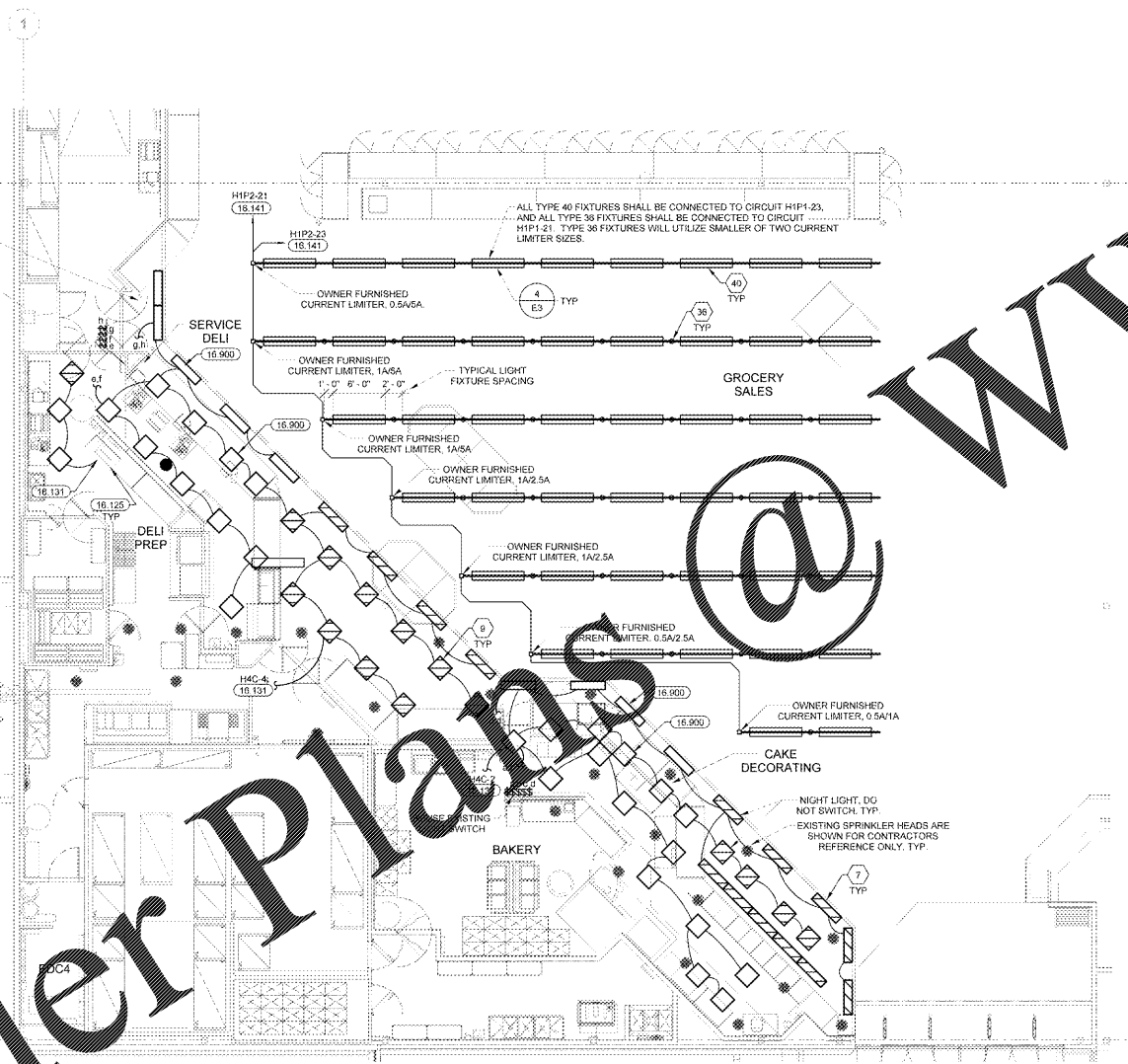
NO.	DESCRIPTION	DATE

CHECKED BY: BMD
 DRAWN BY: JRL
 PHOTO CYCLE: 02/23/18
 DOCUMENT DATE: 04/10/18
 BG PROJECT NO.: 19532

This document originally issued and sealed by Jason Christopher Adams, P.E. 9923422 on 04/08/2018. This document should not be considered a certified document NOT FOR CONSTRUCTION.

GROCERY LIGHTING PLANS

SHEET: **GE1**



EXISTING CONDITIONS WERE TAKEN FROM ORIGINAL DRAWINGS AND MAY NOT REFLECT EXACT AS-BUILT CONDITIONS. CONTRACTOR SHALL FIELD VERIFY ALL EXISTING CONDITIONS PRIOR TO SUBMITTING FINAL BIDS. CONTRACTOR SHALL CAREFULLY COORDINATE NEW WORK AND DEMOLITION WITH ALL OTHER DISCIPLINES AND EXISTING CONDITIONS.

EACH SUBCONTRACTOR IS RESPONSIBLE FOR HAVING A THOROUGH KNOWLEDGE OF ALL DRAWINGS AND SPECIFICATIONS IN THEIR RELATED FIELD. THE FAILURE TO ACQUANT THEMSELVES WITH THIS KNOWLEDGE DOES NOT RELIEVE THE RESPONSIBILITY OF PERFORMING THE WORK PROPERLY. NO ADDITIONAL COMPENSATION SHALL BE ALLOWED BECAUSE OF CONDITIONS THAT OCCUR DUE TO FAILURE TO FAMILIARIZE WORKERS WITH THIS KNOWLEDGE.

Order Plans

WWW.LDILine.com