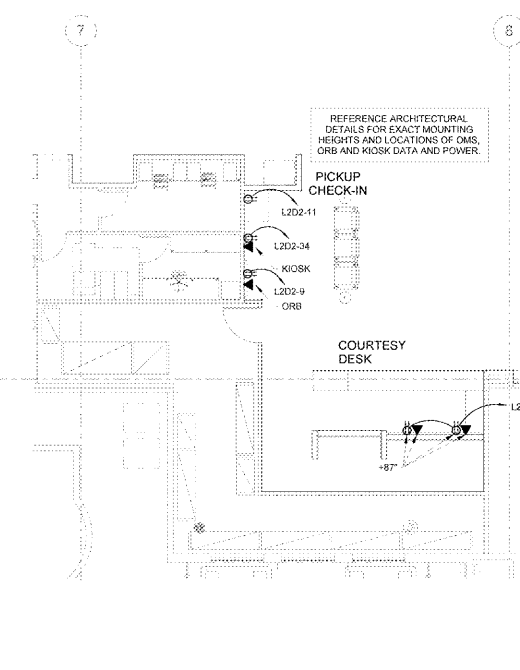
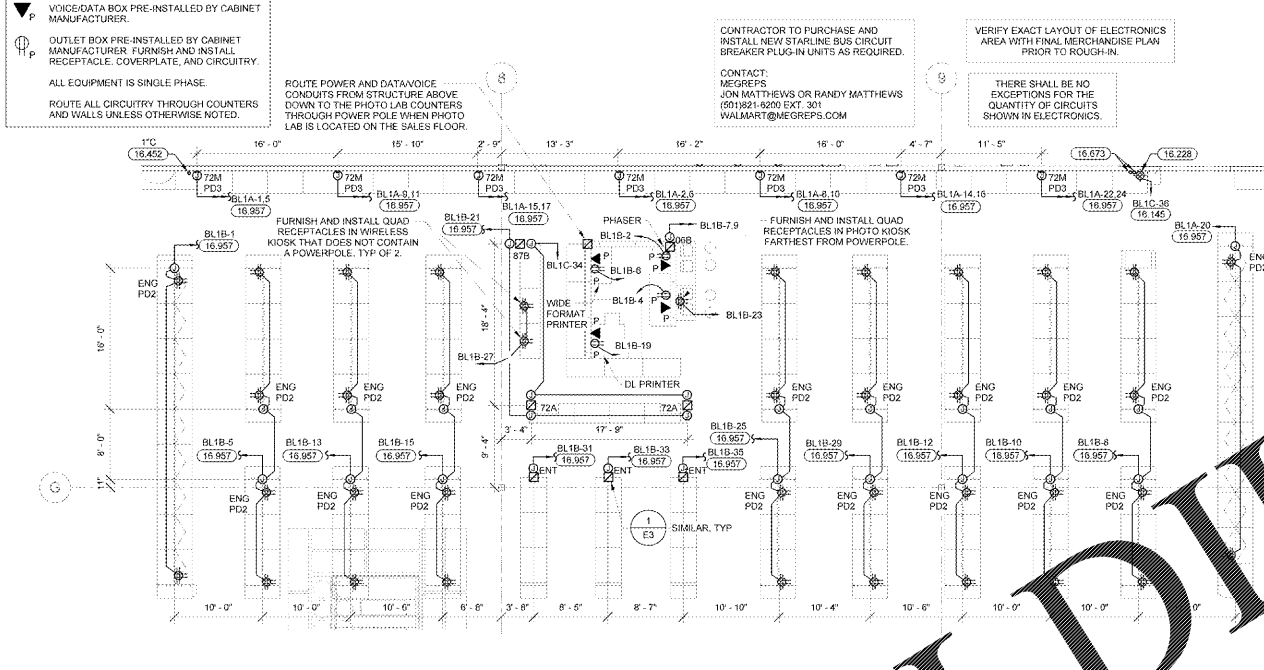


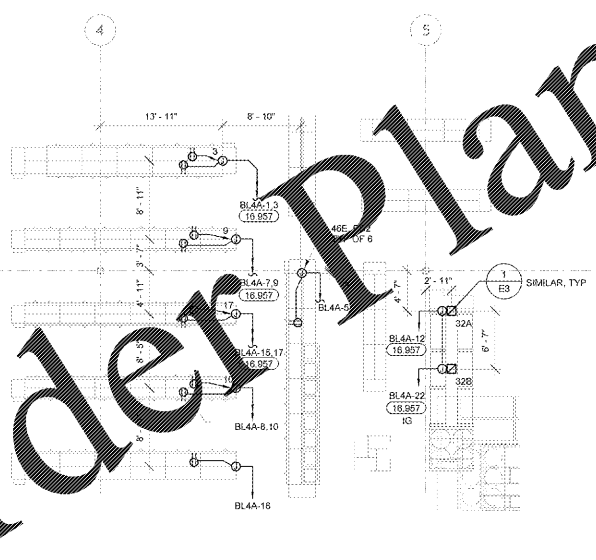
5 CUSTOMER SERVICE POWER PLAN  
1/8" = 1'-0"



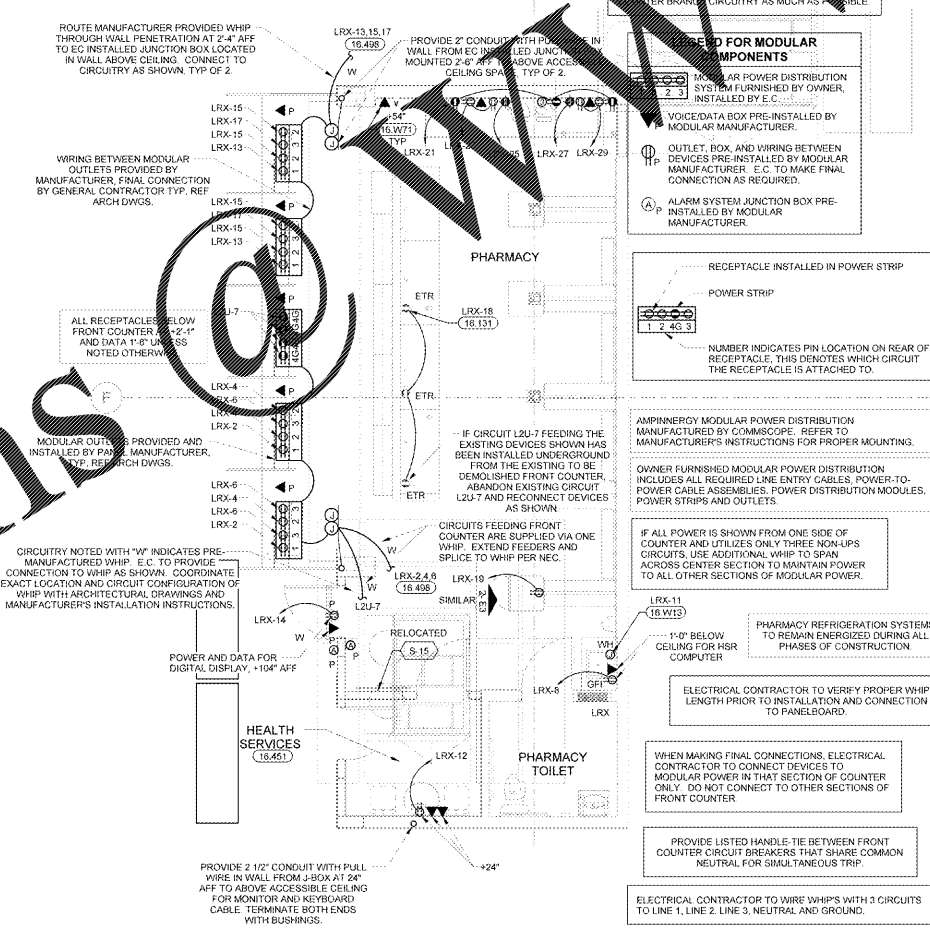
4 ENTERTAINMENT POWER PLAN  
1/8" = 1'-0"



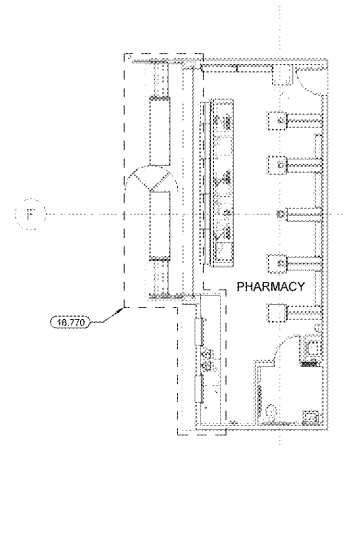
3 COSMETICS POWER PLAN  
1/8" = 1'-0"



2 PHARMACY POWER PLAN  
1/4" = 1'-0"



1 PHARMACY POWER DEMO PLAN  
1/8" = 1'-0"



KEYNOTES

- 16.131 CONNECT TO EXISTING CIRCUIT. EC SHALL VERIFY PRIOR TO ROUGH-IN THAT EXISTING CIRCUIT HAS SPARE CAPACITY TO ACCOMMODATE ADDITIONAL LOAD.
- 16.145 CONNECT TO EXISTING BRANCH CIRCUIT. VERIFY PRIOR TO ROUGH-IN THAT EXISTING CIRCUIT HAS CAPACITY TO ACCOMMODATE NEW LOAD. VERIFY CONDITION OF BRANCH CIRCUIT CONDUIT AND WIRE PRIOR TO USE TO INSURE THAT THEY MEET ALL U.L. RATINGS AND REPLACE AS REQUIRED.
- 16.228 INSTALL RECEPTACLE IN UPPER RIGHT HAND CORNER OF PROVIDED DATA ENCLOSURE.
- 16.451 PROVIDE EMT WITH PROPERLY INSTALLED COMPRESSION OR SET-SCREW TYPE FITTING AND AN INSULATED GROUND CONDUIT FOR ALL RACEWAYS SERVING THIS ROOM TO COMPLY WITH NEC HEALTH CARE FACILITIES.
- 16.452 SOUND SYSTEM CONDUIT SHALL BE RATED FOR PULL WIRES FROM BELOW AT EACH BAR JOIST. PROVIDE BUSING AT EACH BAR JOIST. PROVIDE BUSING AT EACH BAR JOIST.
- 16.496 FURNISH AND INSTALL 20 AMP 120 V CIRCUITS FEED FROM PANELBOARD AS INDICATED. EMT APPROPRIATE AND LISTED HANDLE TYPES SHALL BE USED. PROVIDE 20A CIRCUIT BREAKER IF NECESSARY. SWITCH MANUFACTURER TYPE AND LISTED AS REQUIRED. CIRCUIT BREAKERS, E.C. SHALL VERIFY PRIOR TO ROUGH-IN THAT EXISTING PANELS HAS SPARE CAPACITY TO ACCOMMODATE ADDITIONAL LOAD.
- 16.770 CONDUIT SIZES PROVIDE (2) 1-1/2" CONDUITS WITH PULL WIRES FROM BAR JOIST TO PROVIDED DATA ENCLOSURE AND TERMINATE WITH BUSHINGS.
- 16.777 EC SHALL DISCONNECT, EXTEND AND RECONNECT ALL ELECTRICAL CIRCUITRY. LABEL ALL ASSOCIATED PANELBOARD SCHEDULES TO REFLECT SYSTEM NUMBERS AND LOAD DESCRIPTION. VERIFY CONDITION OF BRANCH CIRCUIT CONDUIT AND WIRE PRIOR TO USE TO ENSURE THAT THEY MEET ALL U.L. RATINGS AND REPLACE AS REQUIRED. COORDINATE THIS PROCESS WITH CONSTRUCTION MANAGER TO MINIMIZE DOWNTIME.
- 16.957 CONNECT CIRCUITS TO EXISTING BRANCH CIRCUITRY. MINIMUM WIRE SIZE AND PANELBOARD CIRCUIT ARE NOTED. VERIFY SIZE, RATING AND CONDITION OF EXISTING BRANCH CIRCUIT CONDUIT AND WIRE PRIOR TO USE TO ENSURE THAT THEY MEET REQUIRED SIZE AND ALL U.L. RATINGS AND REPLACE AS REQUIRED.
- 16.913 WATER HEATERS, A DISCONNECT EXISTING, AND RECONNECT NEW WATER HEATERS. COORDINATE WITH MECHANICAL CONTRACTOR. IF FURNISH AND INSTALL HANDLE LOCKS (LOCK-OFF) ON ALL CIRCUIT BREAKERS FEEDING WATER HEATERS.
- 16.971 VOICE-DATA FURNISH AND INSTALL AN OUTLET BOX WITH COVER AT EACH LOCATION SHOWN, AND 3/4" CONDUIT WITH PULL WIRE FROM EACH BOX TO BAR JOISTS. PROVIDE BUSING ON END OF CONDUIT AT BAR JOISTS. DO NOT COMBINE CONDUIT INTO ONE DROP WITH CONDUIT ROUTED FROM BOX-TO-BOX. INSTALL INDIVIDUAL CONDUIT TO EACH BOX.



REDESIGN  
DETAIL DESIGN COLLABORATIVE  
16330 E. Greenway Blvd. Suite 110  
Tampa, FL 33610  
781.888.8888  
redesign.com



JASON C. ADAMS  
REGISTERED ELECTRICAL ENGINEER  
NO. 12747  
MEMBER OF THE INTERNATIONAL  
ASSOCIATION OF ELECTRICAL ENGINEERS  
MEMBER NO. 117738  
CONSULTANT BY:  
GORDONVILLE, VA  
164 CAMP CREEK PKWY., LOUISA, VA 23083  
STORE NO. - 4852-223  
143 SUGAR  
17-127.25  
17-127.25  
17-127.25

ISSUE BLOCK

NO.	DATE	DESCRIPTION	STATUS

CHECKED BY: BMD  
DRAWN BY: JRL  
PROTO CYCLE: 02/23/18  
DOCUMENT DATE: 04/10/18  
BS PROJECT NO: 19532  
This document or digitally issued asset created by:  
Jason Christopher Adams, P.E.  
#163442  
on 04/09/2018  
This document should not be  
reproduced or modified without  
NOT FOR CONSTRUCTION

ENLARGED POWER PLANS

Order Plans