

KEYNOTES

- 16.145 CONNECT TO EXISTING BRANCH CIRCUIT. VERIFY PRIOR TO ROUGH-IN THAT EXISTING CIRCUIT HAS CAPACITY TO ACCOMMODATE NEW LOAD. VERIFY CONDITION OF BRANCH CIRCUIT, CONDUIT AND WIRE PRIOR TO USE TO INSURE THAT THEY MEET ALL U.L. RATINGS AND REPLACE AS REQUIRED.
- 16.227 ELECTRIC WATER COOLER RECEPTACLE. CONCEAL WITHIN CABINET PER MANUFACTURER'S REQUIREMENTS.
- 16.232 AUTOMATIC DOOR OPERATOR. VERIFY LOCATION WITH MANUFACTURER'S RECOMMENDATIONS PRIOR TO INSTALLATION. ALL CONDUIT AND WIRING SHALL BE CONCEALED AT MAIN ENTRANCE DOORS.
- 16.410B COUNTER MOUNTED DEVICES. ROUTE BRANCH CIRCUITRY THROUGH COUNTER FURNISHED POWER POLE. ROUTE FLEXIBLE METAL CONDUITS ALONG INSIDE EACH COUNTER/ CABINET.
- 16.492 EC SHALL COORDINATE WITH GENERAL CONTRACTOR AND ARCHITECTURAL DEMOLITION PLANS THE PRESENT OF ELECTRICAL PANELS, JUNCTIONS AND WIRING. ALL THE FOLLOWING OPERATIONS SHALL NOT AFFECT ACTIVE CIRCUITS IN PANELS. DEMOLISHED CIRCUITS SHALL BE SPACED TO COORDINATE ELECTRICAL REQUIREMENTS WITH GENERAL CONTRACTOR PRIOR TO BID.
- 16.508 INSECT CONTROL DEVICE. PROVIDE BROWN DEVICE AND MATCHING TRAY AT +54".
- 16.70 EC SHALL DISCONNECT, EXTEND, AND RECONNECT ALL ELECTRICAL CIRCUITRY. LABEL ALL ASSOCIATED PANELBOARD SCHEDULES TO REFLECT SYSTEM NUMBERS AND LOAD DESCRIPTION. VERIFY CONDITION OF BRANCH CIRCUIT, CONDUIT, AND WIRE PRIOR TO USE TO ENSURE THAT THEY MEET ALL U.L. RATINGS AND REPLACE AS REQUIRED. COORDINATE THIS PROCESS WITH CONSTRUCTION MANAGER TO MINIMIZE DOWNTIME.
- 16.967 CONNECT CIRCUIT(S) TO EXISTING BRANCH CIRCUITRY. MINIMUM WIRE SIZE AND PANELBOARD CIRCUIT ARE NOTED. VERIFY SIZE RATING AND CONDITION OF EXISTING BRANCH CIRCUIT, CONDUIT AND WIRE PRIOR TO USE TO ENSURE THAT THEY MEET REQUIRED SIZE, AND ALL U.L. RATINGS AND REPLACE AS REQUIRED.



DETAIL DESIGN COLLABORATIVE
1100 South 3rd Street, Suite 110
Arlington, VA 22202
703.961.7225
www.rdc.com

CONSULTANTS
JASON C. ALDRIS
PHOTOGRAPHY
1100 South 3rd Street, Suite 110
Arlington, VA 22202
703.961.7225
www.jcaldris.com

143 SSG/POR
Walmart
GORDONSVILLE, VA
164 CAMP CREEK PKWY., LOUISA, VA 23093
STORE NO.: 4852-223
17-127-25 | PHOTO:
JOB NUMBER:

Remodel Proto

ISSUE BLOCK	
1	REV #3 04/26/18

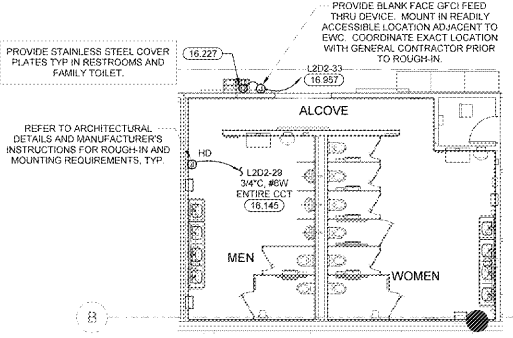
CHECKED BY: BMD
DRAWN BY: JRL
PROTO CYCLE: 02/23/18
DOCUMENT DATE: 04/10/18
BG PROJECT NO: 19532
This document originally issued and sealed by Jason Christopher Aldris, P.E. 0052432 on 04/09/18. This document should not be resealed or modified without the approval of the original author. NOT FOR CONSTRUCTION

EACH SUBCONTRACTOR IS RESPONSIBLE FOR HAVING A THOROUGH KNOWLEDGE OF ALL DRAWINGS AND SPECIFICATIONS IN THEIR RELATED FIELD. THE FAILURE TO ACQUAINT THEMSELVES WITH THIS KNOWLEDGE DOES NOT RELIEVE THE RESPONSIBILITY OF PERFORMING THE WORK PROPERLY. NO ADDITIONAL COMPENSATION SHALL BE ALLOWED BECAUSE OF CONDITIONS THAT OCCUR DUE TO FAILURE TO FAMILIARIZE WORKERS WITH THIS KNOWLEDGE.

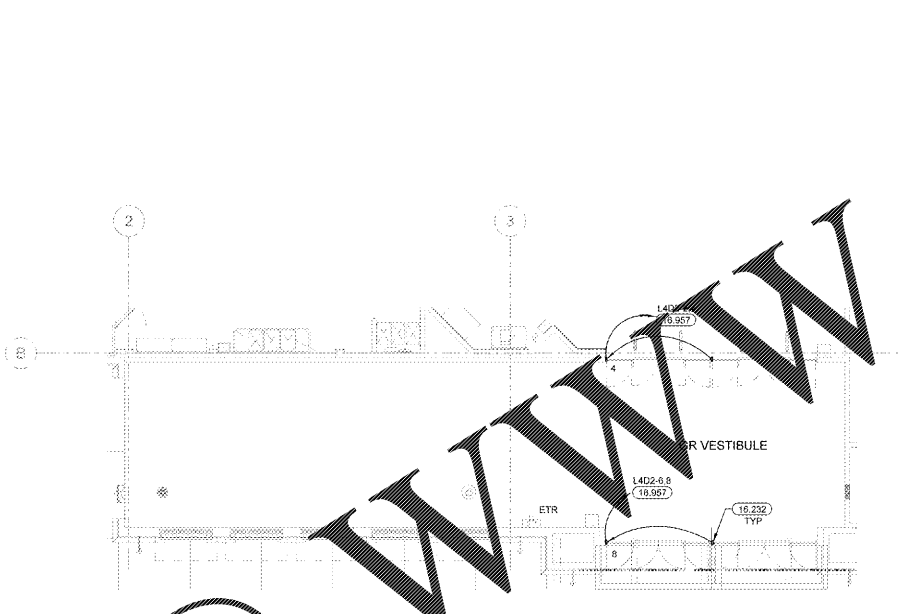
EXISTING CONDITIONS WERE TAKEN FROM ORIGINAL DRAWINGS AND MAY NOT REFLECT EXACT "AS-BUILT" CONDITIONS. CONTRACTOR SHALL FIELD VERIFY ALL EXISTING CONDITIONS PRIOR TO SUBMITTING FINAL BIDS. CONTRACTOR SHALL CAREFULLY COORDINATE NEW WORK AND DEMOLITION WITH ALL OTHER DISCIPLINES AND EXISTING CONDITIONS.

ENLARGED POWER PLANS

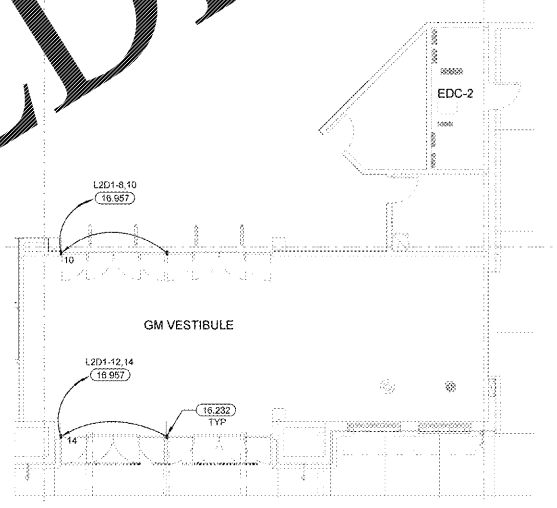
SHEET: **E2.2**



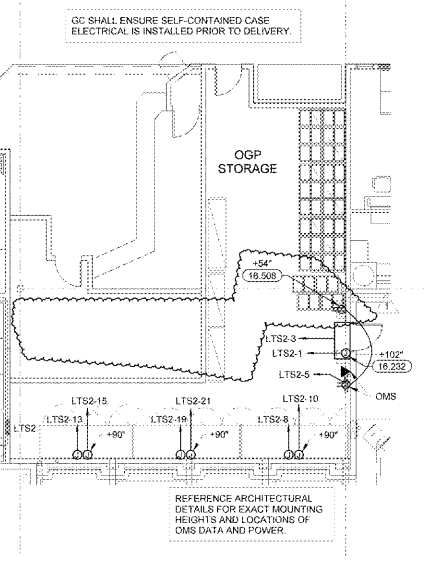
7 FRONT RESTROOM POWER PLAN
1/8" = 1'-0"



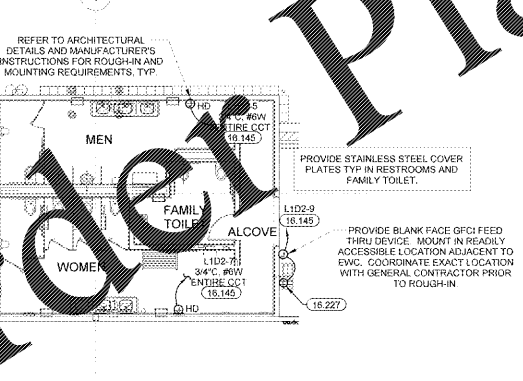
5 GR VESTIBULE POWER PLAN
1/8" = 1'-0"



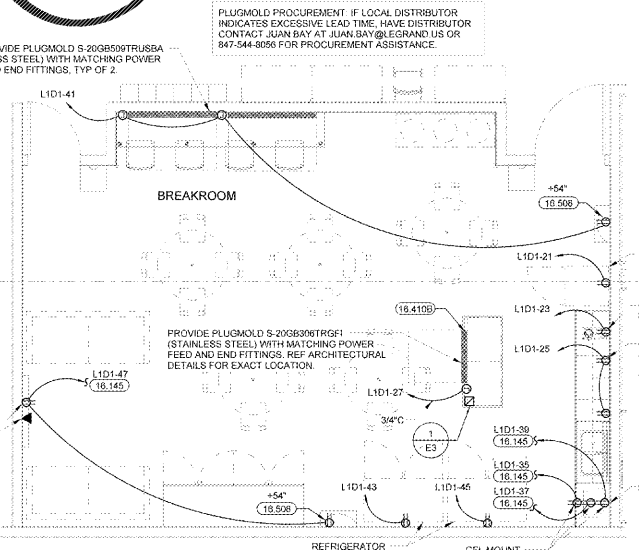
4 GM VESTIBULE POWER PLAN
1/8" = 1'-0"



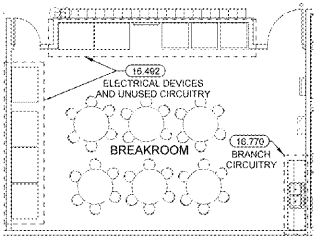
6 OGP STORAGE POWER PLAN
1/8" = 1'-0"



3 REAR RESTROOM POWER PLAN
1/8" = 1'-0"



2 BREAKROOM POWER PLAN
1/4" = 1'-0"



1 BREAKROOM POWER DEMO PLAN
1/8" = 1'-0"

OGP SHALL ENSURE SELF-CONTAINED CASE ELECTRICAL IS INSTALLED PRIOR TO DELIVERY.

REFER TO ARCHITECTURAL DETAILS AND MANUFACTURER'S INSTRUCTIONS FOR ROUGH-IN AND MOUNTING REQUIREMENTS, TYP.

PROVIDE BLANK FACE GFCI FEED THRU DEVICE. MOUNT IN READILY ACCESSIBLE LOCATION ADJACENT TO EWC. COORDINATE EXACT LOCATION WITH GENERAL CONTRACTOR PRIOR TO ROUGH-IN.

PROVIDE STAINLESS STEEL COVER PLATES TYP IN RESTROOMS AND FAMILY TOILET.

PROVIDE PLUGMOLD S-206890VTRUSSA (STAINLESS STEEL WITH MATCHING POWER FEED AND END FITTINGS, TYP OF 2).

PLUGMOLD PROCUREMENT IF LOCAL DISTRIBUTOR INDICATES EXCESSIVE LEAD TIME, HAVE DISTRIBUTOR CONTACT JUAN BAY AT JUAN.BAY@LEGRAND.US OR 847-544-8056 FOR PROCUREMENT ASSISTANCE.

PLUGMOLD S-206890VTRUSSA (STAINLESS STEEL) WITH MATCHING POWER FEED AND END FITTINGS, REF ARCHITECTURAL DETAILS FOR EXACT LOCATION.

PROVIDE PLUGMOLD S-206890VTRUSSA (STAINLESS STEEL) WITH MATCHING POWER FEED AND END FITTINGS, TYP OF 2.

REFER TO ARCHITECTURAL DETAILS AND MANUFACTURER'S INSTRUCTIONS FOR ROUGH-IN AND MOUNTING REQUIREMENTS, TYP.

PROVIDE BLANK FACE GFCI FEED THRU DEVICE. MOUNT IN READILY ACCESSIBLE LOCATION ADJACENT TO EWC. COORDINATE EXACT LOCATION WITH GENERAL CONTRACTOR PRIOR TO ROUGH-IN.

PROVIDE STAINLESS STEEL COVER PLATES TYP IN RESTROOMS AND FAMILY TOILET.

PROVIDE PLUGMOLD S-206890VTRUSSA (STAINLESS STEEL) WITH MATCHING POWER FEED AND END FITTINGS, REF ARCHITECTURAL DETAILS FOR EXACT LOCATION.

PROVIDE PLUGMOLD S-206890VTRUSSA (STAINLESS STEEL) WITH MATCHING POWER FEED AND END FITTINGS, TYP OF 2.

REFER TO ARCHITECTURAL DETAILS AND MANUFACTURER'S INSTRUCTIONS FOR ROUGH-IN AND MOUNTING REQUIREMENTS, TYP.

PROVIDE STAINLESS STEEL COVER PLATES TYP IN RESTROOMS AND FAMILY TOILET.

PROVIDE BLANK FACE GFCI FEED THRU DEVICE. MOUNT IN READILY ACCESSIBLE LOCATION ADJACENT TO EWC. COORDINATE EXACT LOCATION WITH GENERAL CONTRACTOR PRIOR TO ROUGH-IN.

PROVIDE STAINLESS STEEL COVER PLATES TYP IN RESTROOMS AND FAMILY TOILET.

PROVIDE PLUGMOLD S-206890VTRUSSA (STAINLESS STEEL) WITH MATCHING POWER FEED AND END FITTINGS, REF ARCHITECTURAL DETAILS FOR EXACT LOCATION.

PROVIDE PLUGMOLD S-206890VTRUSSA (STAINLESS STEEL) WITH MATCHING POWER FEED AND END FITTINGS, TYP OF 2.

Order Plans @ www.LDILine.com