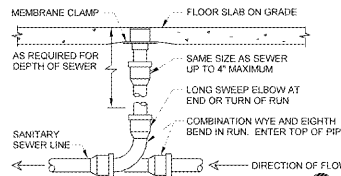
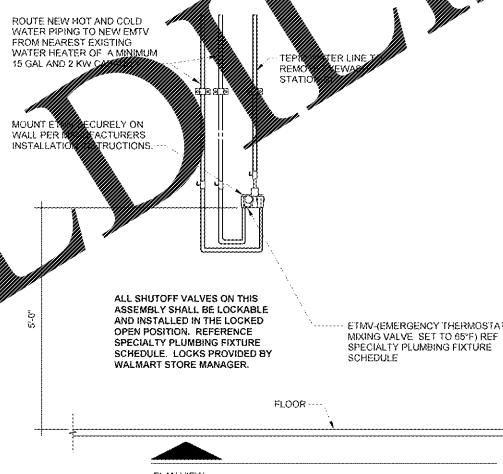


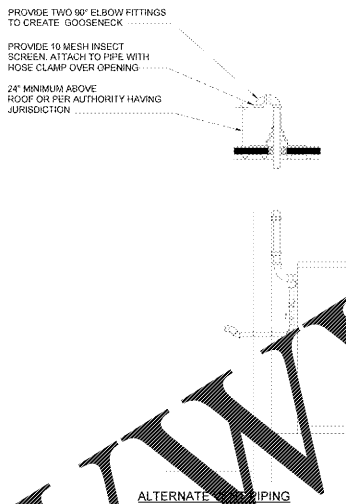
**9 REFRIGERATED CASE DRAIN**  
12" = 1'-0"



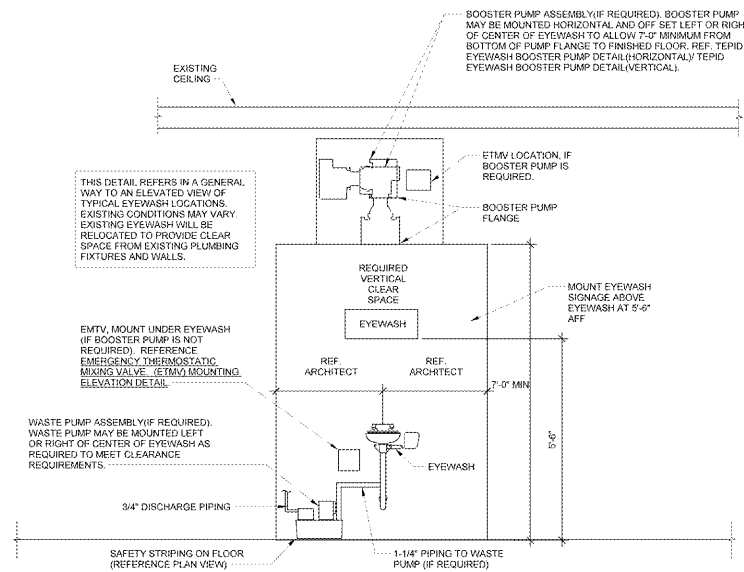
**8 FLOOR CLEANOUT**  
NTS



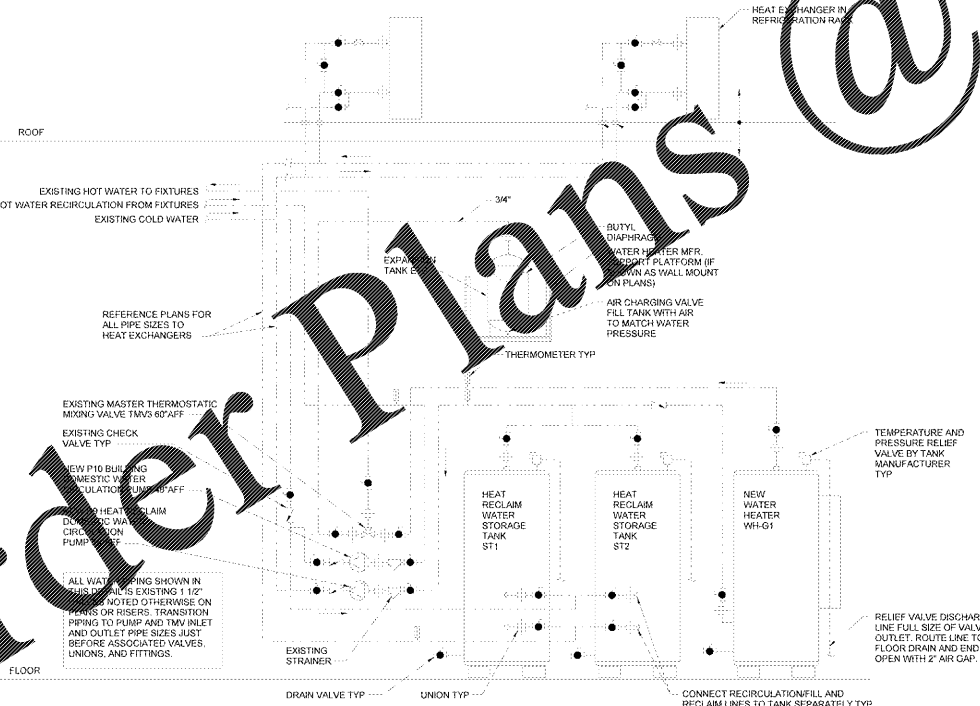
**5 EMERGENCY THERMOSTATIC MIXING VALVE (ETMV) MOUNTING ELEVATION**  
NTS



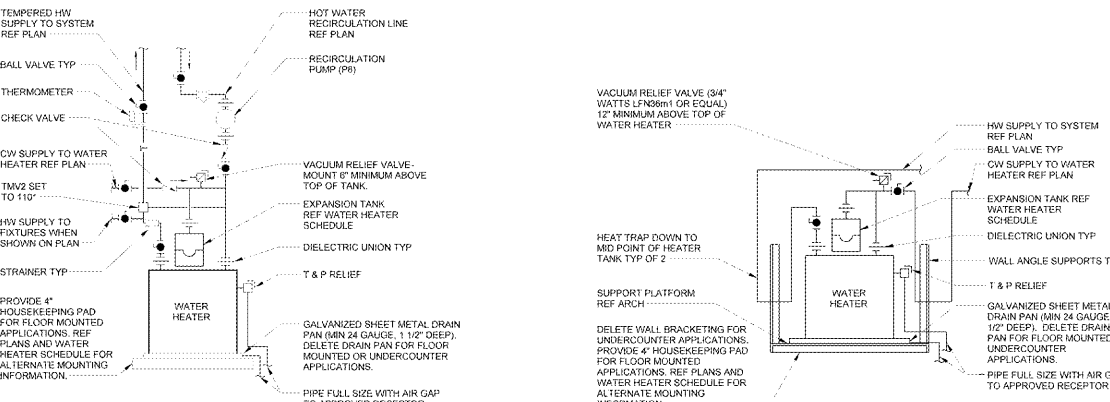
**6 WASTE COOKING OIL TANK DETAIL**  
NTS



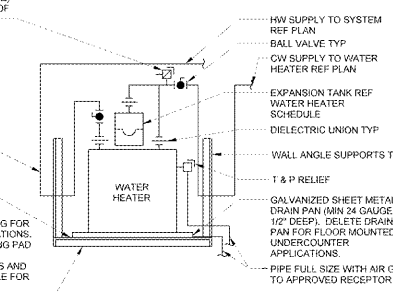
**7 EYEWASH ELEVATION**  
NTS



**3 HEAT RECLAIM STORAGE SYSTEM AND WATER HEATER**  
NTS



**2 RECIRCULATION WATER HEATER**  
12" = 1'-0"



**1 WATER HEATER**  
NTS

**PLUMBING SYMBOLS**

|       |                                 |
|-------|---------------------------------|
| SS    | SANITARY SEWER                  |
| CWW   | COMBINATION WASTE AND VENT      |
| GW    | GREASE WASTE                    |
| OW    | OIL WASTE                       |
| ST    | STORM SEWER                     |
| RD    | ROOF DRAIN LINE                 |
| ORD   | OVERFLOW ROOF DRAIN LINE        |
| ---   | DOMESTIC COLD WATER             |
| ---   | DOMESTIC HOT WATER              |
| ---   | DOMESTIC HOT WATER RETURN       |
| HW    | HIGH PRESSURE WATER             |
| T     | TEMPERED WATER                  |
| E     | FILL WATER                      |
| GC    | NATURAL GAS                     |
| CA    | COMPRESSED AIR                  |
| CD    | CONDENSATE DRAIN                |
| RO    | REVERSE OSMOSIS WATER           |
| ---   | PLUMBING VENT                   |
| VAC   | PLUMBING VACUUM                 |
| UNION | UNION                           |
| PR    | GAS PRESSURE REGULATOR          |
| GC    | GAS COCK                        |
| ELB   | ELBOW - TURNED DOWN             |
| TEE   | TEE - TURNED DOWN               |
| TEE   | TEE - TURNED UP                 |
| BV    | BALL VALVE                      |
| FV    | FLOW CONTROL VALVE              |
| CV    | CHECK VALVE                     |
| SHV   | SHUT-OFF VALVE IN VERTICAL LINE |
| BPFV  | BACKFLOW PREVENTER              |
| M     | WATER METER                     |
| WHRA  | WATER HAMMER ARRESTOR           |
| TM    | THERMOMETER                     |
| TR    | T & P RELIEF VALVE              |
| TMV   | THERMOSTATIC MIXING VALVE       |
| FD    | FLOOR DRAIN                     |
| FD1   | FLOOR CLEANOUT                  |
| FD01  | FLOOR CLEANOUT (SQUARE)         |
| PC030 | FLOOR CLEANOUT (SQUARE)         |
| YCD   | YARD CLEANOUT                   |
| FPWH  | FREEZE PROOF WALL HYDRANT       |
| HB    | HOSE BIBB                       |
| WCO   | WALL CLEANOUT                   |
| CONN  | CONNECT TO EXISTING             |
| ETR   | EXISTING TO REMAIN              |
| DEMP  | DEMAND PIPE                     |
| VBF   | VENT BELOW FLOOR                |
| HS    | HAND SINK                       |
| 3CS   | 3-COMPARTMENT SINK              |
| MS    | MOP SINK                        |
| PS    | PREP SINK                       |
| CTS   | COUNTERTOP SINK                 |

**REM DESIGN**  
DETAIL DESIGN COLLABORATIVE

11175 Lee Blvd. #110  
Arlington, VA 22204  
703.299.5666  
www.remdesign.com

STIPULATION FOR THE CONTRACTOR: THE CONTRACTOR SHALL VERIFY THE EXISTING PLUMBING AND ELECTRICAL CONDITIONS AND SHALL BE RESPONSIBLE FOR THE CORRECTION OF ANY DEFICIENCIES FOUND. THE CONTRACTOR SHALL MAINTAIN THE EXISTING PLUMBING AND ELECTRICAL SYSTEMS IN GOOD WORKING ORDER AT ALL TIMES. THE CONTRACTOR SHALL BE RESPONSIBLE FOR OBTAINING ALL NECESSARY PERMITS AND APPROVALS FROM THE LOCAL AUTHORITIES. THE CONTRACTOR SHALL MAINTAIN ACCESS TO ALL ADJACENT AREAS AND UTILITIES AT ALL TIMES.

CONSULTANTS  
**Roy R. Payne, Jr., P.E.**  
REGISTERED PROFESSIONAL ENGINEER  
MECHANICAL  
1999  
14832-223  
143 SIGOUR

Remodel Pro

**GORDONSVILLE, VA**  
164 CAMP CREEK PKWY, LOUISA, VA 23093  
STORE NO. 1862-223  
17-127-25

**ISSUE BLOCK**

|  |  |  |
|--|--|--|
|  |  |  |
|  |  |  |
|  |  |  |
|  |  |  |
|  |  |  |
|  |  |  |
|  |  |  |
|  |  |  |
|  |  |  |
|  |  |  |
|  |  |  |
|  |  |  |
|  |  |  |
|  |  |  |

CHECKED BY: RRP  
DRAWN BY: COL  
PROTO CYCLE: 02/23/18  
DOCUMENT DATE: 04/10/18  
BS PROJECT NO: 19532

This document originally issued and revised by: Roy R. Payne, Jr., P.E. 0039861 on 04/08/2018. This document should not be considered a certified document. **NOT FOR CONSTRUCTION**

**PLUMBING DETAILS**

SHEET: **P2**

**Order Plans @**