

Order Plans @

148 SGT. JOHN ...
771 ...
redline.com

CONSULTANTS
Ricky N. Torral

Walmart
GORDONSVILLE, VA
164 CAMP CREEK PKWY., LOUISA, VA 23093
STORE NO.: 4852-223
JOB NUMBER: 143 SGTOR
PROJ. NO.: 17-127-25

ISSUE BLOCK

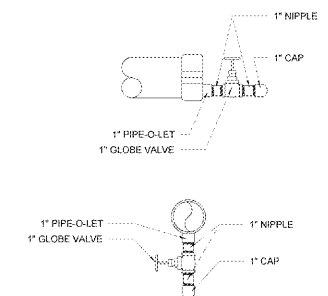
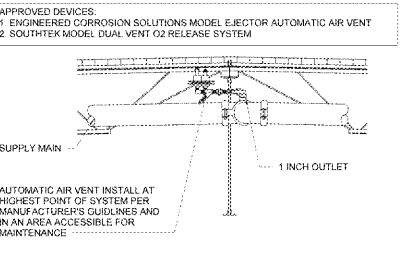
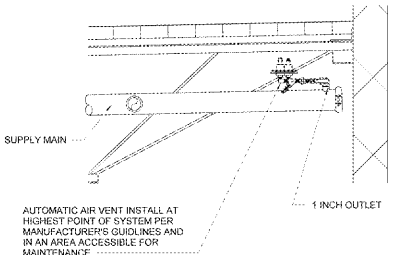
NO.	DESCRIPTION

CHECKED BY: ERP
DRAWN BY: JPB
PROTO CYCLE: 02/23/18
DOCUMENT DATE: 04/10/18
BG PROJECT NO: 19532
This document originally issued and revised by
Ricky N. Torral, P.E., #943266
on 04/10/2018.
This document should not be considered a certified document.
NOT FOR CONSTRUCTION

FIRE PROTECTION DETAILS

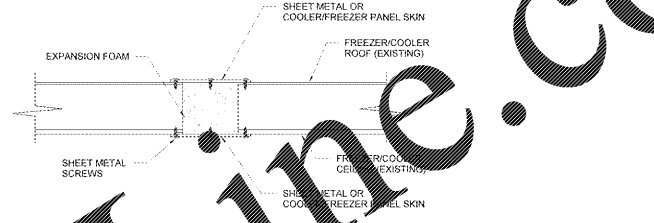
PATCH PROCEDURE

1. ATTACH FIRMLY (WITH SHEET METAL SCREWS OR EQUIVALENT) A PIECE OF COOLER/FREEZER METAL SKIN, SHEET METAL OR EQUIVALENT MATERIAL SIZED SLIGHTLY LARGER THAN THE HOLE TO BE PATCHED TO THE INSIDE OF THE COOLER/FREEZER.
2. FROM THE TOP OF THE COOLER/FREEZER, FILL HOLE(S) TO BE PATCHED COMPLETELY WITH THE EXPANSION FOAM. ALLOW THE FOAM TO COMPLETELY DRY.
3. TRIM OFF EXCESS FOAM FLUSH WITH TOP OF COOLER/FREEZER.
4. ATTACH FIRMLY (WITH SHEET METAL SCREWS OR EQUIVALENT) A PIECE OF COOLER/FREEZER METAL SKIN, SHEET METAL OR EQUIVALENT MATERIAL SIZED SLIGHTLY LARGER THAN THE HOLE, THAT IS NOW FILLED WITH THE EXPANDED FOAM, TO THE OUTSIDE/TOP OF THE COOLER/FREEZER.

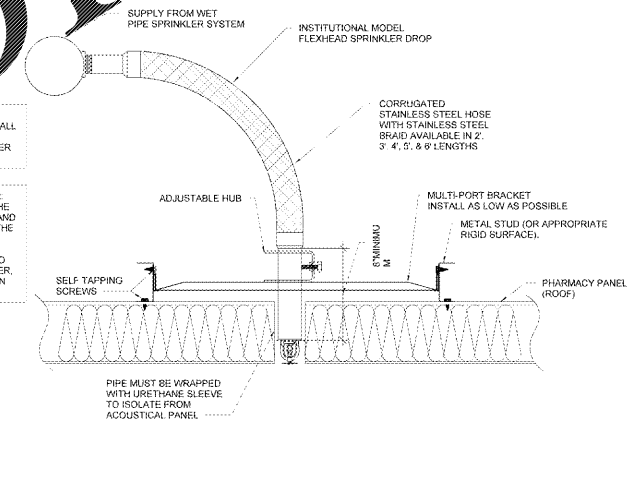


7 AUXILIARY DRAIN DETAILS

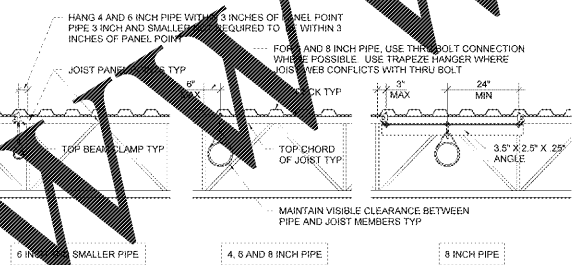
6 AIR RELEASE VENT DETAILS



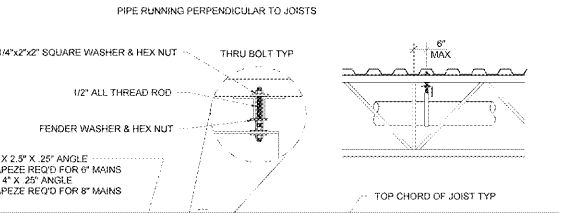
5 FREEZER COOLER SPRINKLER PENETRATION PATCH DETAILS



4 MODULAR PHARMACY SPRINKLER DETAIL DETAILS



BEAM CLAMP NOT TRAPEZED	THRU-BOLT NOT TRAPEZED	BEAM CLAMP TRAPEZED
4" PIPE EVERY 12'-0" EVERY OTHER JOIST	4" PIPE EVERY 12'-0" EVERY OTHER JOIST	4" PIPE NOT NECESSARY
6" PIPE EVERY 6'-0" EVERY JOIST	6" PIPE EVERY 12'-0" EVERY OTHER JOIST	6" PIPE NOT NECESSARY
8" PIPE NOT ALLOWED	8" PIPE EVERY 6'-0" EVERY JOIST	8" PIPE EVERY 6'-0" EVERY JOIST



BEAM CLAMP NOT TRAPEZED	THRU BOLT	TRAPEZED THRU BOLT
4" PIPE EVERY 12'-0"	6" PIPE EVERY 12'-0"	8" PIPE EVERY 12'-0"

CONTRACTOR MAY SUBSTITUTE ANGLE IRON TRAPEZE MEMBER WITH PIPE MEMBER. SIZE PIPE MEMBER IN ACCORDANCE WITH NFPA-13 AND MAINTAIN 12 INCH MAXIMUM DEFLECTOR DISTANCE.

UTILIZE THESE HANGING METHODS FOR ALL SPRINKLER PIPING. SPACE TRAPEZE HANGERS IN ACCORDANCE WITH SCHEDULE. LOCATE HANGERS WITHIN 3 INCHES OF JOIST PANEL POINTS U.N.O.

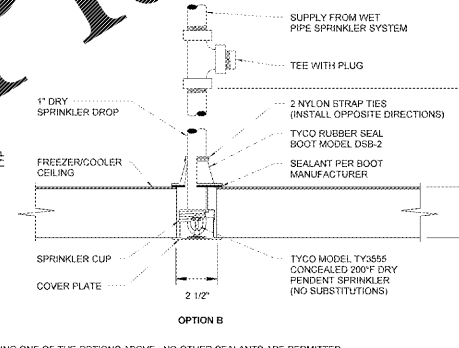
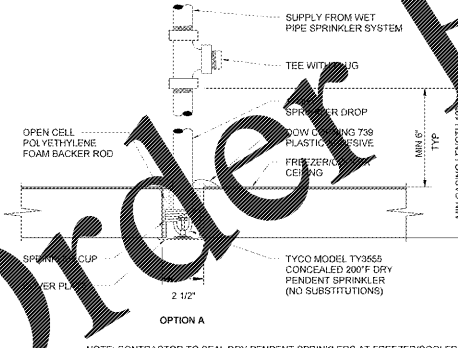
2 PIPE SUPPORT DETAILS

OPTION "A" INSTALLATION PROCEDURE

1. CORE DRILL 2 1/2" DIAMETER HOLE IN THE FREEZER/COOLER INSULATED CEILING PANEL. LOCATE HOLE AND REQUIRED SPRINKLER PROTECTION IN ACCORDANCE WITH NFPA 13 OBSTRUCTION CRITERIA (SSP TYPE SPRINKLERS). MAINTAIN 6" CLEARANCE FROM COOLER SEAMS.
2. INSTALL DRY PENDENT SPRINKLER PER MANUFACTURER'S INSTALLATION REQUIREMENTS.
3. COMPLETELY FILL ANNUAL CEILING OPENING BETWEEN THE ESCUTCHEON AND TOP OF CEILING PANEL WITH OPEN-CELL POLYETHYLENE FOAM BACKER ROD. EXPANDED FOAM IS NOT PERMITTED.
4. INJECT DOW CORNING 739 PLASTIC ADHESIVE SEALANT INTO AND AROUND THE TOP OF THE FREEZER/COOLER CEILING CORE OPENING IN ACCORDANCE WITH SEALANT MANUFACTURER'S INSTRUCTIONS.

OPTION "B" INSTALLATION PROCEDURE

1. CORE DRILL 2 1/2" DIAMETER HOLE IN THE FREEZER/COOLER INSULATED CEILING PANEL FROM BELOW. LOCATE HOLE AND REQUIRED SPRINKLER PROTECTION IN ACCORDANCE WITH NFPA 13 OBSTRUCTION CRITERIA (SSP TYPE SPRINKLERS). MAINTAIN 6" CLEARANCE FROM COOLER SEAMS.
2. INSTALL TYCO DRY PENDENT SPRINKLER PER MANUFACTURER'S INSTALLATION REQUIREMENTS. INSERT BOOTS OR TOP OF SPRINKLER FROM BELOW.
3. COMPLETELY SEAL INTERFACE BETWEEN BOOTS AND TOP OF FREEZER/COOLER WITH AN ADHESIVE PROVIDED WITH BOOT IN ACCORDANCE WITH MANUFACTURER'S INSTRUCTIONS.
4. APPLY STRAP TIES OR WRAP AROUND SPRINKLER BARREL PER MANUFACTURER'S INSTRUCTIONS.



3 FREEZER/COOLER DRY PENDENT SPRINKLER DETAILS

1 EXISTING SPRINKLER RISERS DETAILS