

ALL AREAS SHOWN HATCHED TO BE FIELD VERIFIED BY THE SPRINKLER CONTRACTOR TO ENSURE REMODEL WORK DOES NOT AFFECT SPRINKLERS AND/OR PROVIDE ADEQUATE SPRINKLER PROTECTION IN ACCORDANCE WITH NFPA 13. SPRINKLER CONTRACTOR TO DEMO SPRINKLERS AND ASSOCIATED PIPING AS NECESSARY AND PLUG EXISTING OUTLETS ACCORDINGLY. REFER TO ENLARGED FIRE PROTECTION PLANS FOR DETAILS. ALL EXISTING SPRINKLERS AND SYSTEMS TO REMAIN UNLESS NOTED AND/OR HATCHED OTHERWISE. ALL AREAS SHOWN HATCHED TO BE FIELD VERIFIED BY THE SPRINKLER CONTRACTOR TO ENSURE REMODEL WORK DOES NOT AFFECT SPRINKLERS AND/OR PROVIDE ADEQUATE SPRINKLER PROTECTION IN ACCORDANCE WITH NFPA 13. SPRINKLER CONTRACTOR TO DEMO SPRINKLERS AND ASSOCIATED PIPING AS NECESSARY AND PLUG EXISTING OUTLETS ACCORDINGLY. REFER TO ENLARGED FIRE PROTECTION PLANS FOR DETAILS. ALL EXISTING SPRINKLERS AND SYSTEMS TO REMAIN UNLESS NOTED AND/OR HATCHED OTHERWISE.

PROTECTION CRITERIA BASED ON 2010 NFPA 13					
CORRIDOR/TENANT SPACES/GROCERY PREP/FOOD TENANT/OFFICES (MISCELLANEOUS STORAGE)	0.20/1500 SQ FT	250	130		CLASS I-IV UP TO 5'-0"; 13, 13.2.1, TABLE 13.2.1, FIGURE 13.2.1 CURVE 0M2
COOLERS/FREEZERS (MISCELLANEOUS STORAGE)	0.20/1500 SQ FT OR ENTIRE AREA	250	130		CLASS I-III UP TO 12'-0"; 13, 13.2.1, TABLE 13.2.1, FIGURE 13.2.1 CURVE 0M2

GENERAL PIPING AND DEMOLITION NOTES

1. CONTRACTOR MUST VISIT THE BUILDING TO DETERMINE THE FULL EXTENT OF THE EXISTING FIRE PROTECTION WORK AND EXISTING CONDITIONS. BECOME TOTALLY FAMILIAR WITH THE DISCONNECTIONS, REMOVALS, RELOCATIONS AND/OR RECONNECTINGS OF EXISTING FIRE PROTECTION EQUIPMENT REQUIRED, AND CONDITIONS IN THE PROPOSAL FOR THIS PROJECT. NO EXTRA COMPENSATION WILL BE PAID FOR LACK OF SUCH DETERMINATION, FAMILIARIZATION, AND/OR ALLOWANCE.
2. UNLESS NOTED OTHERWISE, DISCONNECT AND REMOVE ALL EXISTING FIRE PROTECTION COMPONENTS NOT INTENDED TO BE REUSED.
3. REMOVE ALL DEMOLITION MATERIALS AND DEBRIS TO AN APPROVED DUMPING SITE AND CLEAN ALL FIRE PROTECTION WORK PRIOR TO PROJECT COMPLETION.
4. PERFORM ALL WORK ACCORDING TO THE PROJECT PHASING SCHEDULE INFORMATION FOR THIS PROJECT. PROVIDE ALL NECESSARY FIRE PROTECTION WORK, TEMPORARY AND/OR OTHERWISE, AND USE WHATEVER MEANS NECESSARY TO CONFORM TO THE REQUIRED CONSTRUCTION PHASING OF THE PROJECT.
5. CONTRACTOR IS RESPONSIBLE FOR REPAIRING OR REPLACING ITEMS DAMAGED DURING DEMOLITION AND CONSTRUCTION.
6. CONTRACTOR SHALL PATCH ALL HOLES TO MATCH ADJACENT SURFACES LEFT UNUSED AFTER EXISTING SPRINKLER PIPING OR EQUIPMENT IS REMOVED AND VACATED FROM THESE HOLES.
7. CONTRACTOR IS RESPONSIBLE FOR PROVIDING AND MAINTAINING FIRE DEPARTMENT ACCESS ROADS THROUGHOUT THE PROJECT.
8. SPRINKLER SYSTEMS NOT ASSOCIATED WITH THE DEMOLITION SHALL BE LEFT IN SERVICE.
9. ALL WORK SHALL BE PERFORMED SO AS NOT TO INTERRUPT SERVICE. THE CONTRACTOR SHALL PROPERLY NOTIFY THE LANDLORD, LESSOR AND THE ADJACENT TENANTS A MINIMUM OF 48 HOURS IN ADVANCE BEFORE COMMENCING THIS WORK. ALL WORK SHALL BE SCHEDULED IN ADVANCE.
10. ALL SYSTEMS SHALL BE LEFT IN SERVICE AT THE END OF EACH WORKDAY.

LDI DESIGN
 RETAIL DESIGN COLLABORATIVE

1001 E. 30th St.
 Louisville, KY 40203
 Tel: 502.462.6666
 Fax: 502.462.6667
 www.ldi.com

CONSULTANTS
 RICKY N. TORRELL, P.E.
 143 S. MAIN ST.
 SUITE 504
 LOUISVILLE, KY 40202
 PH: 502.636.7600
 FAX: 502.636.7601
 WWW.RNTGROUP.COM

Remodel Proto

Walmart
 GORDONSVILLE, VA
 164 CAMP CREEK PKWY., LOUISA, VA 23083
 STORE NO. 4852-223
 17-127-25 : PHOTO: 143 SGR/KOR

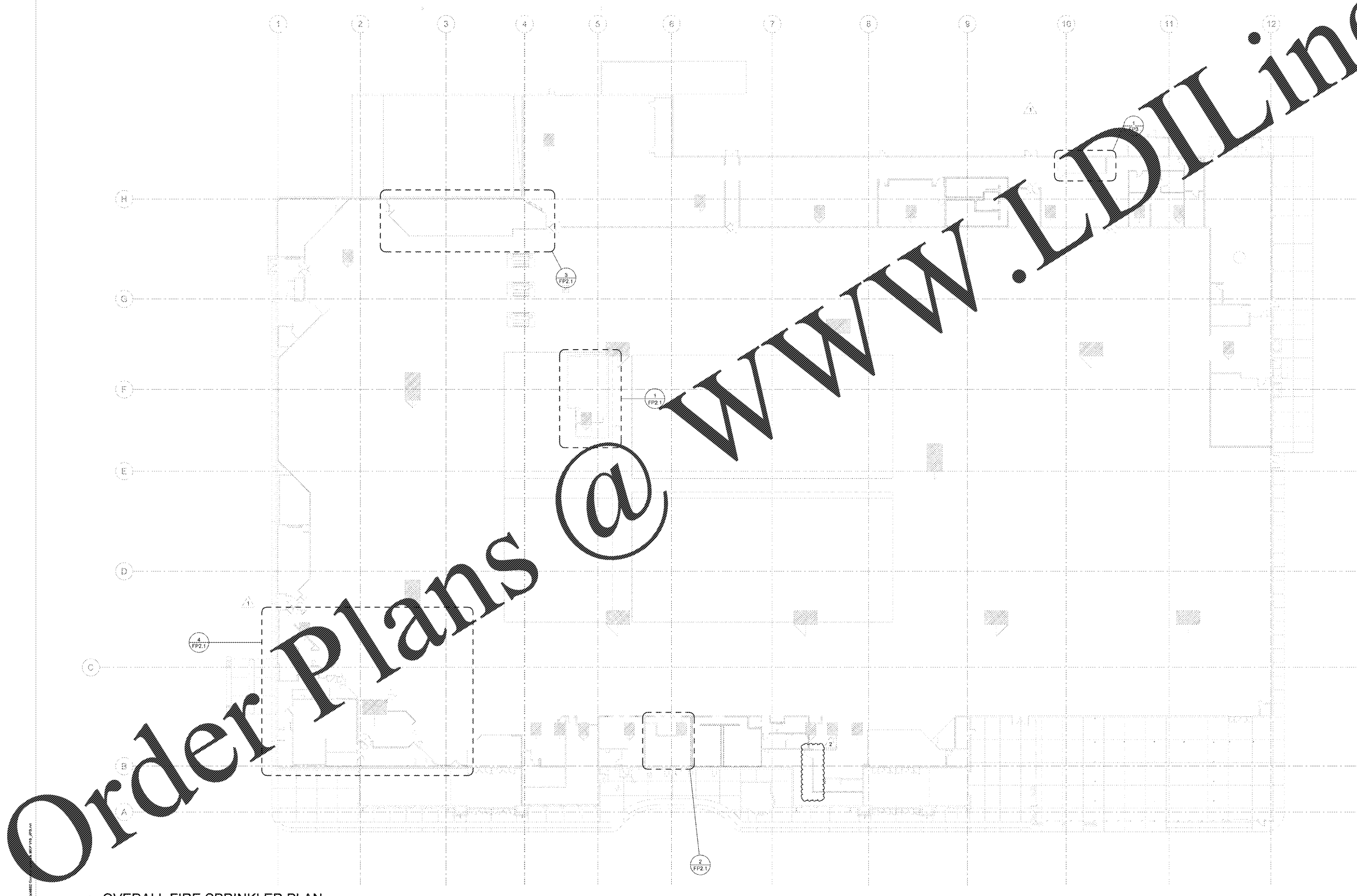
ISSUE BLOCK

REV #	DATE	DESCRIPTION
1	04/25/18	
2	04/26/18	

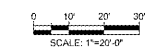
CHECKED BY: RNT
 DRAWN BY: JPB
 PRTO CYCLE: 02/23/18
 DOCUMENT DATE: 04/10/18
 BG PROJECT NO: 19532
 This document originally issued and dated by
 Ricky N. Torrell, P.E., #943206
 on 04/25/18.
 This document should not be
 considered a certified document.
NOT FOR CONSTRUCTION

OVERALL FIRE SPRINKLER PLAN

SHEET: **FP2**



① OVERALL FIRE SPRINKLER PLAN
 1" = 20'-0"



© 2018 LD DESIGN, INC.