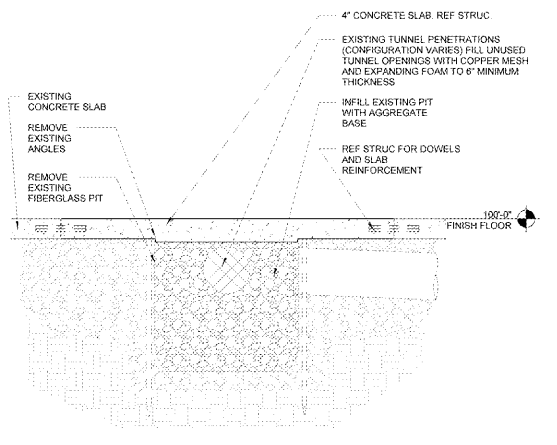
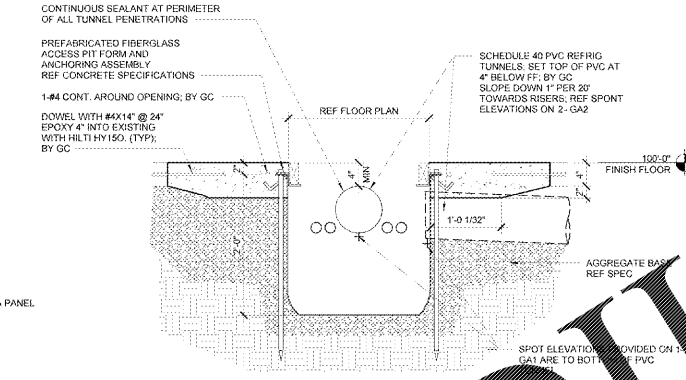


**SANITARY COVE BASE SURFACE PREPARATION REQUIREMENTS**

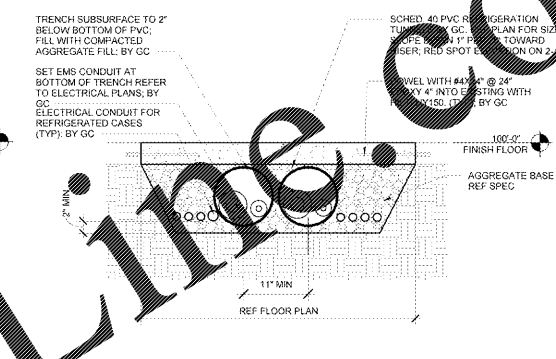
1. REMOVE EXISTING WALL BASE AT EXISTING WALL CONDITIONS. REMOVE ALL GYPSUM BOARD BELOW 12" AFF AND REPLACE WITH GLASS-MAT BACKER OF SAME THICKNESS. IF FRP IS IN GOOD CONDITION REPLACE DAMAGED BASE WITH NEW BASE.
2. REMOVE AND REPLACE WALL FINISH TO NEAREST JOINT AS REQUIRED TO PERFORM GLASS-MAT BACKER INSTALLATION.
3. CUT BACK EXISTING QUARRY TILE FLOORING AS REQUIRED TO PROVIDE 1" CLEAR FROM FINISHED SURFACE TO EDGE OF TILE.
4. REMOVE ALL DEBRIS AND ANY REMAINING GROUT. CLEAN SURFACES AS REQUIRED FOR PROPER INSTALLATION OF CONSTRUCTION MATERIAL AND FINISHES.
5. INSTALL BUILDING TAPE AND FIBERGLASS MESH TAPE AS INDICATED.



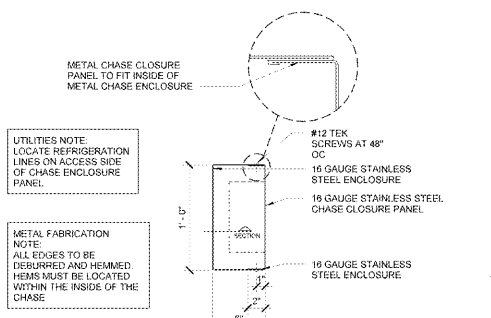
**16 CAP EXISTING REFRIGERATION PIT**  
1" = 1'-0"



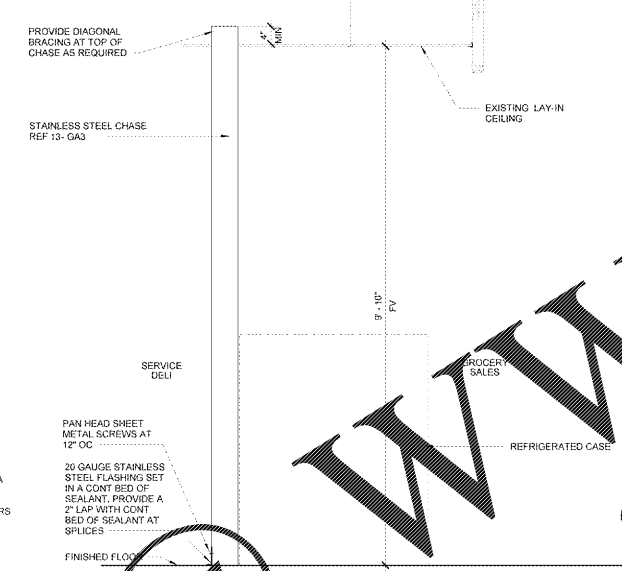
**15 REFRIGERATION PIT**  
1" = 1'-0"



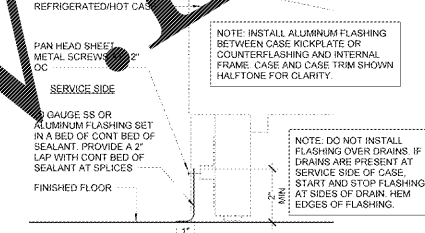
**14 REFRIGERATION TRENCH DETAIL**  
1" = 1'-0"



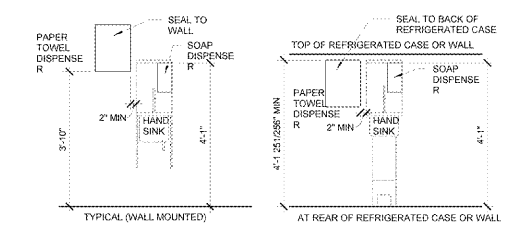
**13 STAINLESS STEEL CHASE AT DELI**  
1 1/2" = 1'-0"



**12 SECTION AT DELI**  
3/8" = 1'-0"



**10 CASE TRIM DETAIL AT SERVICE CASE**  
3" = 1'-0"



**9 HAND SINK ELEVATION**  
1/2" = 1'-0"

**11 NOT USED**

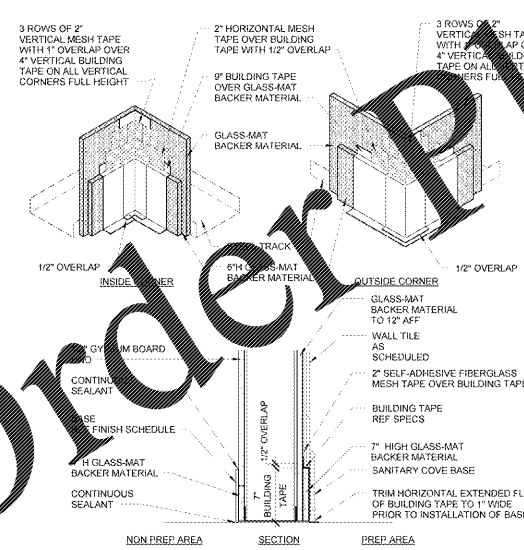
**8 NOT USED**

**7 NOT USED**

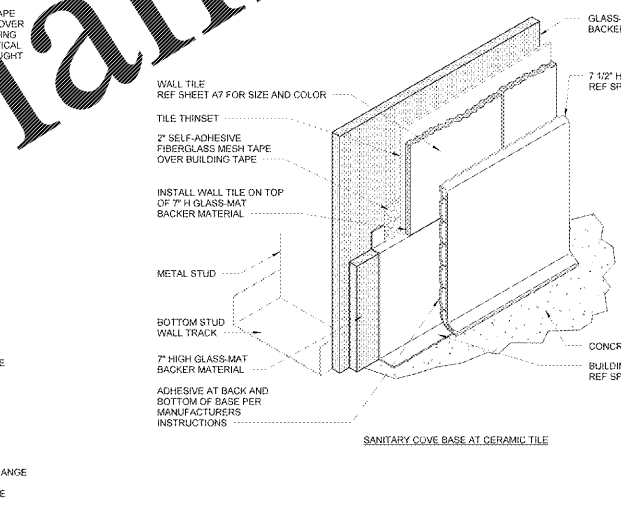
**6 NOT USED**

**5 NOT USED**

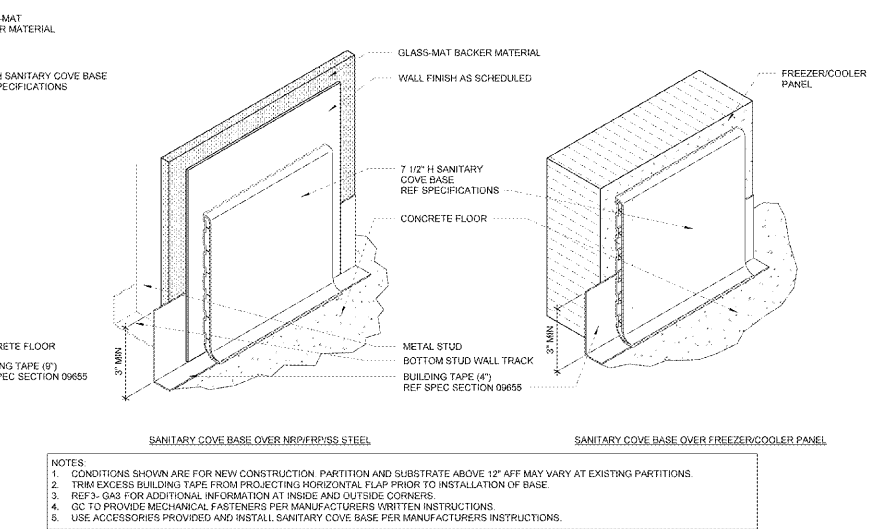
**4 NOT USED**



**3 WALL DETAIL**  
1 1/2" = 1'-0"



**2 SANITARY COVE BASE DETAILS (CONCRETE)**  
3" = 1'-0"



**1 SANITARY COVE BASE ACCESSORY DETAILS**  
3" = 1'-0"

- NOTES**
1. CONDITIONS SHOWN ARE FOR NEW CONSTRUCTION PARTITION AND SUBSTRATE ABOVE 12" AFF MAY VARY AT EXISTING PARTITIONS.
  2. TRIM EXCESS BUILDING TAPE FROM PROJECTING HORIZONTAL FLAP PRIOR TO INSTALLATION OF BASE.
  3. REF-3-GA3 FOR ADDITIONAL INFORMATION AT INSIDE AND OUTSIDE CORNERS.
  4. GC TO PROVIDE MECHANICAL FASTENERS PER MANUFACTURERS WRITTEN INSTRUCTIONS.
  5. USE ACCESSORIES PROVIDED AND INSTALL SANITARY COVE BASE PER MANUFACTURERS INSTRUCTIONS.

100% COMPLETE  
11/15/2018  
17:02:25  
143 SGR-COR

CONSULTANTS

**Walmart**  
GORDONSVILLE, VA  
884 CAMP CREEK PKWY., LOUISA, VA 23083  
STORE NO.: 14852-223  
JOB NUMBER: 17-027-23  
2018 Remodel Proto

**ISSUE BLOCK**

1	REV 2	04/25/18
---	-------	----------

CHECKED BY: DF  
DRAWN BY: TP  
PROTO CYCLE: 02/25/18  
DOCUMENT DATE: 04/10/18

**GROCERY DETAILS**

SHEET: **GA3**

**Order Plans**