

SHEET NOTES

1 REF A8 FOR SCHEDULE FINISH KEY

KEYNOTES

6.27 48" HIGH WAINSCOT  
10.44 PROVIDE TACTILE "EXIT" SIGN, REF N1  
16.05 INSECT CONTROL UNIT TYPE NOTED ADJACENT TO UNIT. REF N1 FOR LEGEND AND NOTES



101175-3071.DWG  
A.30790  
7.20.20  
www.com

STIPULATION FOR THE DRAWING AND INFORMATION CONTAINED HEREIN IS LIMITED TO THE PROJECT AND SITE SPECIFICALLY IDENTIFIED HEREIN. IT IS THE USER'S RESPONSIBILITY TO OBTAIN ALL NECESSARY PERMITS AND APPROVALS FROM THE APPROPRIATE AUTHORITIES. THE CONTRACTOR SHALL BE RESPONSIBLE FOR OBTAINING ALL NECESSARY PERMITS AND APPROVALS. THE CONTRACTOR SHALL BE RESPONSIBLE FOR OBTAINING ALL NECESSARY PERMITS AND APPROVALS.

CONSULTANTS

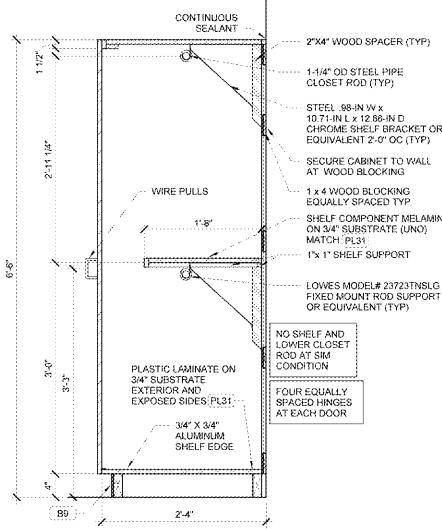
Walmart  
GORDONSVILLE, VA  
884 CAMP CREEK PKWY, LOUISA, VA 23083  
STORE NO. 4852-223  
143 SSG-OR  
17-0727-26 | PHOTO:  
2018 Remodel Proto

ISSUE BLOCK table with columns: REV, DATE, DESCRIPTION

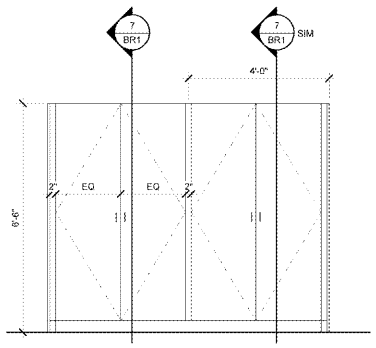
CHECKED BY: DF  
DRAWN BY: TP  
PROTO CYCLE: 02/29/18  
DOCUMENT DATE: 04/10/18

BREAKROOM PLAN AND DETAILS

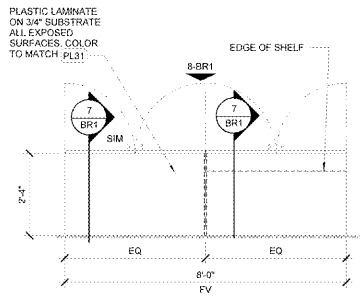
SHEET: BR1



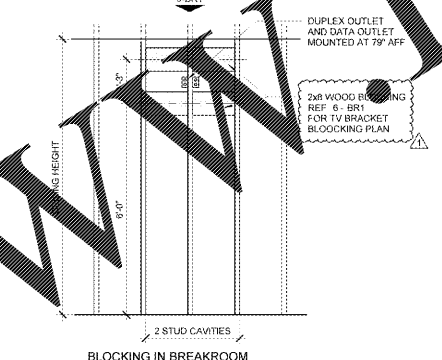
7 COAT RACK SECTION  
1\"/>



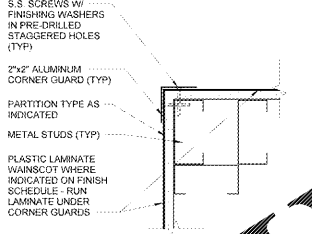
8 COAT RACK ELEVATION  
12\"/>



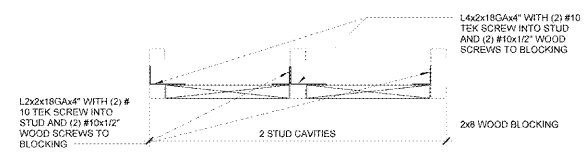
9 COAT RACK PLAN  
12\"/>



4 TV BRACKET BLOCKING  
12\"/>



5 CORNER GUARD  
3\"/>



6 TV BRACKET BLOCKING PLAN  
1\"/>

Table for 151 BREAKROOM with columns: CEILING, FLOOR, WALLS, FLOOR.

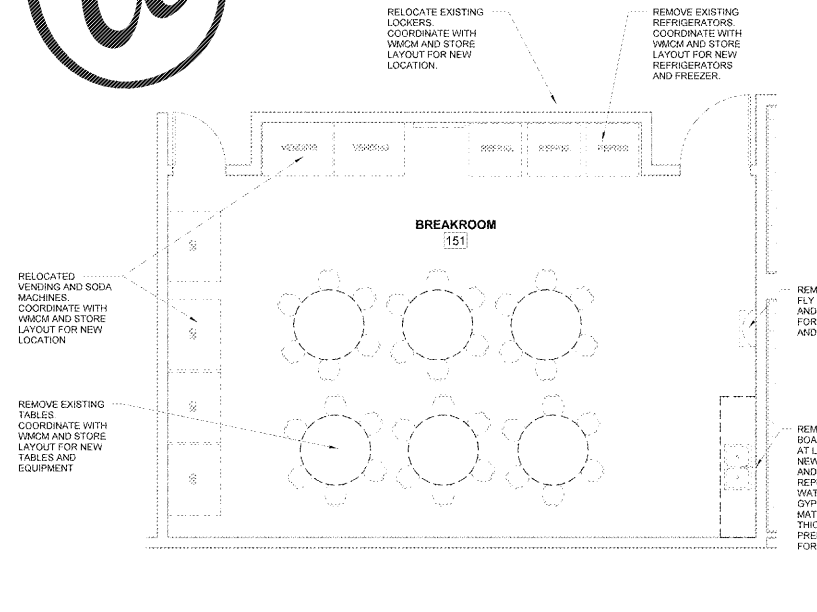
INSECT CONTROL UNIT LEGEND table with columns: TYPE, TOTAL, D.

4x6 BULLETIN BOARDS FURNISHED BY WALMART AND INSTALLED BY GC. COORDINATE WITH WALMART CONSTRUCTION MANAGER FOR LOCATIONS. PAINT FRAME TO MATCH ADJACENT WALL.

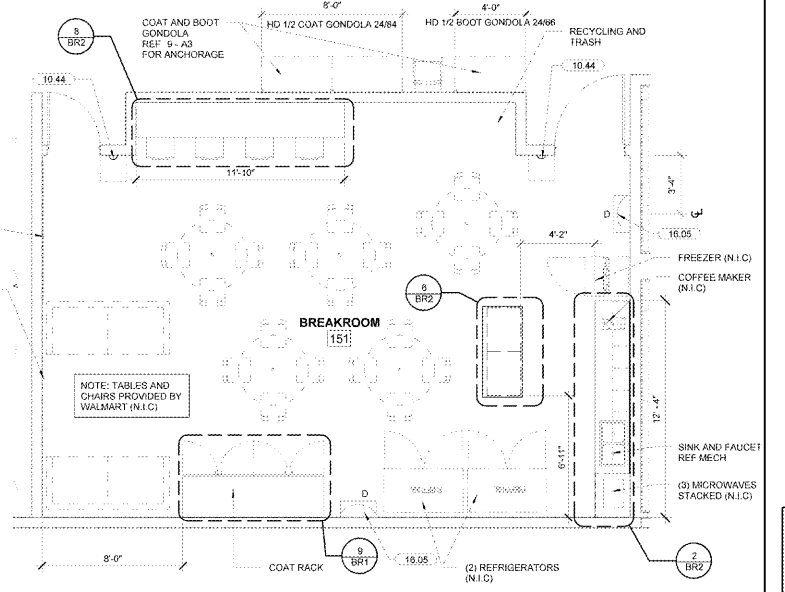
GC TO FURNISH AND INSTALL 2\"/>

REMOVE EXISTING FLY TRAP, PATCH AND PREPARE WALL FOR NEW FINISH AND CABINET.

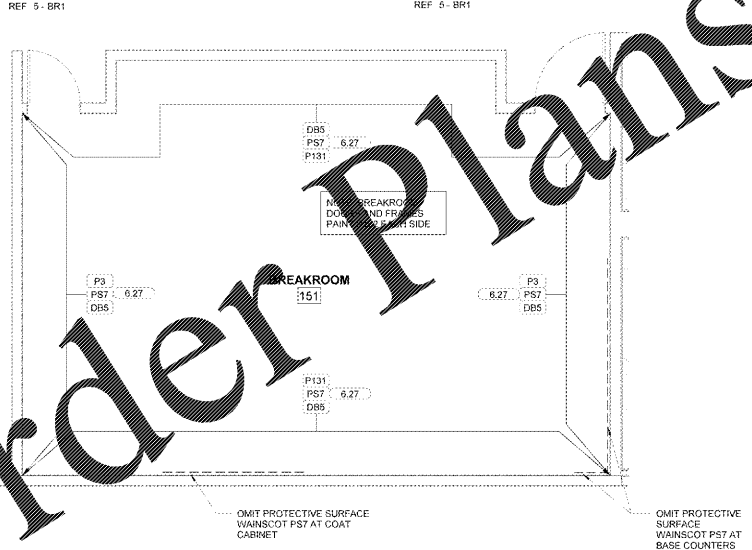
REMOVE EXISTING GYPSUM BOARD TO 4\"/>



2 ENLARGED BREAKROOM DEMO PLAN  
1/4\"/>



1 ENLARGED BREAKROOM PLAN  
1/4\"/>



3 ENLARGED BREAKROOM FINISH PLAN  
1/4\"/>

Order Plans @