



11991 Farmly Ln, Suite 110
VA 20170
703.906.5065
info@red-design.com

STIPULATION FOR THE CONTRACTOR:
THE CONTRACTOR SHALL BE RESPONSIBLE FOR OBTAINING ALL NECESSARY PERMITS AND LICENSING FOR THIS PROJECT AND SHALL BE RESPONSIBLE FOR OBTAINING ALL NECESSARY PERMITS AND LICENSING FOR THE PHARMACY PHASING WORK. THE CONTRACTOR SHALL BE RESPONSIBLE FOR OBTAINING ALL NECESSARY PERMITS AND LICENSING FOR THE PHARMACY PHASING WORK. THE CONTRACTOR SHALL BE RESPONSIBLE FOR OBTAINING ALL NECESSARY PERMITS AND LICENSING FOR THE PHARMACY PHASING WORK.

CONSULTANTS:

Walmart logo
GORDONSVILLE, VA
884 CAMP CREEK PKWY, LOUISIANA, VA 23083
STORE NO. 4892-223
143 BUCKOR
177-327-251 | PHOTO:
2018 Remodel Proto

ISSUE BLOCK

NO.	DESCRIPTION	STATUS

CHECKED BY: DF
DRAWN BY: TP
PROTO CYCLE: 02/25/18
DOCUMENT DATE: 04/10/18

42 PIDTH-5
MODULAR

PHASING
PLANS

SHEET:
PHM5

PRE-CONSTRUCTION (WEEK PRIOR)	NIGHT 1	NIGHT 2	NIGHT 3	NIGHT 4	NIGHT 5	NIGHT 6 AND 7
<ul style="list-style-type: none">GC TO COORDINATE WITH ALL TRADES AND VENDORS ON SCHEDULING, STAGING AND FIELD VERIFICATION, PRIOR TO CONSTRUCTION START COMPLETE AS MUCH AS IS POSSIBLE.GC TO CHECK IN ALL MODULAR COMPONENTS AND VERIFY ALL EQUIPMENT AND RACKS ARE ON-SITE PRIOR TO START OF CONSTRUCTIONGC TO COORDINATE WITH STORE PLANNING THE RELOCATION OF SALES FLOOR RACKS.GC TO COORDINATE RELOCATION OF SALES FLOOR LIGHTING AFFECTED BY DEMO AND NEW CONSTRUCTION.COORDINATE PHARMACY CLEAN UP, RESTROOM MUST BE KEPT ACCESSIBLE FOR DATA AND ELECTRICAL BOXES, STORE NON-SECURE ITEMS SUCH AS PRINTER PAPER OUTSIDE OF PHARMACY. ACCESS TO PHARMACY WILL BE LIMITED A PHARMACIST MUST BE PRESENT	<ul style="list-style-type: none">WORK WILL BE DONE ON THE EXTERIOR AND INTERIOR OF THE PHARMACY.CABLING AND ALARM TEAMS TO PRE-PULL AND STAGE ABOVE CEILINGPRE-PULL ELECTRICAL FOR FOLLOWING EVENINGSCOMPLETE AS MUCH AS IS POSSIBLE TO PREP FOR FOLLOWING NIGHT WORK FOR EXAMPLE LAYOUT EXTENTS OF MODULAR WALLS ON FLOOR TO BE SURE THERE ARE NO ISSUES, SPRAY WITH CLEAR COAT TO KEEP FOR INSTALLATION ON NIGHT 3.	<ul style="list-style-type: none">DEMO THE BULKHEAD AND EXTEND THE JOISTSCOMPLETE AS MUCH AS IS POSSIBLE TO PREP FOR NIGHT 3 WORK, FOR EXAMPLE, LAYOUT EXTENTS OF MODULAR WALLS ON FLOOR TO BE SURE THERE ARE NO ISSUES, SPRAY WITH CLEAR COAT TO KEEP FOR INSTALLATION ON NIGHT 3.PRESTAGE AS MUCH TRADE WORK ON THE INTERIOR OF THE PHARMACY AS POSSIBLE	<ul style="list-style-type: none">THE GOAL IS TO COMPLETE AS MUCH WORK DONE ON THE INTERIOR OF THE PHARMACY AS POSSIBLE PRIOR TO OTHER TRADES NEEDING ACCESS. FOR EXAMPLE, REMOVE CARPET, REMOVE AND REINSTALL PULL BAYS AND FILL FOODS, REPLACE CARPET AND PAINT.	<ul style="list-style-type: none">INSTALL THE FRONT COUNTER INCLUDING MODULAR WALLS AND COUNTERTOP. WORK MUST BE DONE BY 2AM FOR CABLING TO CONTINUE.INSTALL MODULAR PANELS AND DOORS REQUIRED TO SECURE PHARMACYIT IS CRITICAL THAT THE NEW EQUIPMENT AT THE FRONT COUNTER WORK STATIONS AND PHARMACISTS BENCH ARE OPERATIONAL BY OPENING OF BUSINESS IN THE MORNING.INSTALL CEILING TILE, LIGHTS AND MECHANICAL SYSTEMS.	<ul style="list-style-type: none">COMPLETE ALL WORK ON THE INSIDE OF THE PHARMACY, INCLUDING ALL REMAINING FINISHES, FINAL EQUIPMENT, AND PULL BAYS INSTALLATION, AS NEEDED. THIS IS THE LAST NIGHT A PHARMACIST IS AVAILABLE FOR WORK ON THE INSIDE OF THE PHARMACY.INSTALL 1HR MODULAR WALLS, MODULAR CEILING, EQUIPMENT AND ANY REMAINING POWER, MECHANICAL, FIRE, AND DATA.PREP EXTERIOR OF PHARMACY FOR PAINT.PHARMACY MUST BE SECURABLE WITH OUT A PHARMACIST PRESENCE INCLUDING LOCKS AND ALARMS.COORDINATE INSPECTION ON EXISTING WALL IN HEALTH SERVICE ROOM WHERE BLOCKING, ELECTRICAL, DATA IS ADDED	<ul style="list-style-type: none">FINAL FINISHES AND COMPLETE PROJECT.PAINT EXTERIOR OF PHARMACY.FINISH INSIDE OF HEALTH SERVICES ROOM. NO PHARMACIST OR ACCESS TO PHARMACY WILL BE AVAILABLE

OVERVIEW

1. THE NIGHT BY NIGHT PHASING PLAN IS INTENDED TO BE A GUIDE AND MAY NOT OCCUR IN CONSECUTIVE NIGHTS DEPENDING ON AVAILABLE ABILITY TO INSPECT. THIS PROJECT CAN ONLY TAKE 8-7 DAYS TO COMPLETE AND MUST BE PHASED SO PHARMACY IS OPERATIONAL EACH MORNING AND PHARMACIST IS ONLY REQUIRED 4-5 NIGHTS
2. IT IS CRITICAL THAT THE PHARMACY IS SECURE AND OPERATIONAL EACH MORNING.
3. TRADES WILL NEED TO REVISIT AS EACH PHASE IS BEING DEMOLISHED OR CONSTRUCTED.
4. PARTIAL TEMPORARY DUST WALLS WILL BE NEEDED PER PLANS. TEMPORARY DUST DRAPES WILL BE REQUIRED TO PROTECT PHARMACY AND SALES MERCHANDISE. THE DUST DRAPES MUST BE REMOVED EVERY MORNING SO THAT THE PHARMACY AND SALES AREAS ARE OPERATIONAL.

PHARMACY PHASING GENERAL NOTES
(REFER TO N1 AND SPECIFICATION SECTION 01700 FOR ADDITIONAL REQUIREMENTS.)

GENERAL REQUIREMENTS:
1. FEDERAL AND STATE LAWS AND REGULATIONS REQUIRE EXCEPTIONAL EXECUTION AND COMPLIANCE WHEN PERFORMING CONSTRUCTION ON MEDICAL, PHARMACY FACILITIES. OPERATIONAL CONSIDERATIONS FOR WALMART REQUIRE THAT THE STRUCTURAL, MILLWORK, EQUIPMENT INSTALLATION AND PHARMACY SECURITY MODIFICATIONS OF EACH PHASE IS TO BE COMPLETED IN A SINGLE NIGHT. THE PHARMACY MUST BE OPERATIONAL BY NEXT MORNING OPENING. THE NEW INTERIOR AND FRONT WALL DOOR PASSAGE TO THE PHARMACY OPERATION MUST BE INSTALLED AND SECURE PRIOR TO MORNING OPENING. INTERIOR FINISHES OF THE HEALTH TREATMENT ROOM MAY BE COMPLETED ON THE SECOND NIGHT. DUE TO THOSE STRINGENT REQUIREMENTS, SPECIFIC REQUIREMENTS AND RECOMMENDATIONS ARE OFFERED IN THIS DOCUMENT TO FACILITATE UNDERSTANDING AND THE AVOIDANCE OF WORK TRADE CONFLICTS POTENTIALLY IMPACTING SUCCESS WITHIN THE RESTRICTIVE TIMELINE.
2. COMPLY WITH WALMART CONSTRUCTION MANAGER AND WALMART STORE PLANNING FIELD PROJECT MANAGER REQUIREMENTS FOR WORK WITHIN THE BUILDING. SPECIFIC REQUIREMENTS WILL BE DISCUSSED BY THE WALMART CONSTRUCTION MANAGER AND WALMART STORE PLANNING FIELD PROJECT MANAGER AT THE PRE-CONSTRUCTION CONFERENCE.
3. MAINTAIN A SAFE ENVIRONMENT FOR CUSTOMERS AT ALL TIMES. THE ADJACENT SALES AREA SHALL REMAIN IN SERVICE DURING DEMOLITION/CONSTRUCTION.
4. DUST AND DEBRIS SHALL NOT BE TRACKED INTO SALES AREA. SHOULD SUCH AN INCIDENT OCCUR, CLEAN IMMEDIATELY USING APPROPRIATE METHODS AND FORCES. MEDICATION MUST BE PROTECTED FROM DUST AND DEBRIS AT ALL TIMES.
5. THE PHARMACY MUST BE FULLY CLEANED AND OPERATIONAL FOR NORMAL BUSINESS BY 8am EACH DAY. THE PHARMACIST MUST BE PRESENT FOR ALL ACTIVITIES WITHIN THE PHARMACY. ACCESS TO THE PHARMACIST WILL BE LIMITED AND MUST BE PRE ARRANGED THROUGH WM CONSTRUCTION MANAGER AND STORE PLANNING.
DEMOLITION REQUIREMENTS:
1. THE CONTRACTOR SHALL FIELD VERIFY THE EXTENT OF DEMOLITION. THE WORK INCLUDES, BUT IS NOT LIMITED TO, THE DEMOLITION AND REMOVAL OF WALLS, DOORS, FIXTURES, PLUMBING, SPRINKLERS MECHANICAL AND ELECTRICAL ITEMS INCLUDING CONDUITS AND DUCTWORK SHOWN ON JOB OR AS REQUIRED FOR THE INSTALLATION OF THE NEW WORK FOR A COMPLETE JOB.
2. DURING DEMOLITION AND RECONSTRUCTION, COORDINATE WITH THE WALMART CONSTRUCTION MANAGER AND WALMART STORE PLANNING FIELD PROJECT MANAGER LOCATIONS OF ANY NECESSARY TRAFFIC SAFETY BARRIERS OR BARRICADES AND DUST DRAPES WITH THE SCOPE AND PHASING OF THE WORK.
3. WHEN REMOVING EXISTING STRUCTURAL ITEMS, IT IS THE CONTRACTOR'S RESPONSIBILITY TO PROVIDE ADEQUATE SHORING, BRACING, AND SUPPORT SYSTEMS TO KEEP THE EXISTING STRUCTURE INTACT AND IN A SAFE CONDITION. REFER TO SECTION 02023 AND 02021.

PRE-CONSTRUCTION MOBILIZATION REQUIREMENTS

1. UPON AWARD OF CONTRACT AND NOTICE TO PROCEED (NTP) MOBILIZATION ACTIVITIES WILL COMMENCE WORK TO BE SCHEDULED AS FAR IN ADVANCED AS POSSIBLE, WITH SUFFICIENT FLEXIBILITY, TO ALL ADJUSTMENT TO MEET UNFORSEEN CIRCUMSTANCES.
2. PRE-CONSTRUCTION ACTIVITIES SHOULD PROCEED A MINIMUM OF A WEEK PRIOR TO START OF CONSTRUCTION.
3. UPON AWARD OF CONTRACT AND NOTICE TO PROCEED (NTP) MOBILIZATION ACTIVITIES WILL COMMENCE WORK TO BE SCHEDULED AS FAR IN ADVANCED AS POSSIBLE, WITH SUFFICIENT FLEXIBILITY, TO ALL ADJUSTMENT TO MEET UNFORSEEN CIRCUMSTANCES.
4. PRE-CONSTRUCTION ACTIVITIES SHOULD PROCEED A MINIMUM OF A WEEK PRIOR TO START OF CONSTRUCTION.

GENERAL CONTRACTOR RESPONSIBILITY

LOGISTICS
A. SCHEDULING
1. COORDINATE THE UNIQUE ASPECTS OF THIS CONSTRUCTION AND PHASING WITH THE LOCAL JURISDICTION BUILDING AND ELECTRICAL INSPECTORS TO ASCERTAIN ANY REQUIREMENTS POTENTIALLY IMPACTING THE OVERNIGHT CONSTRUCTION, LOW VOLTAGE, CABLING AND ELECTRICAL REVISIONS.
2. THOROUGHLY BRIEF ALL BIDDING TRADE SUB-CONTRACTORS ON ALL ASPECTS OF THE PHARMACY PRE-WORK AND THE OVERNIGHT COMPLETION REQUIREMENT FOR BOTH OPERATION & NEXT DAY SECURITY.
3. COORDINATE WITH PHARMACIST FOR A ONE HOUR AFTER CLOSING OPPORTUNITY FOR EACH TRADE TO EXAMINE THE INTERIOR OF THE PHARMACY TO SCORE AND PLAN THEIR WORK AS A CONSTRUCTION TEAM.
4. IF DATA CABLE & ELECTRICAL TRADESMEN DETERMINE A NEED TO PERFORM PRE-INSTALLATION OF WIRING TO MEET THE OVERNIGHT REQUIREMENT, COORDINATE WITH PHARMACIST FOR A TWO HOUR PERIOD AFTER CLOSING TO PERFORM ROUTING INSTALLATION & STAGING OF WIRING.
5. COORDINATE WITH STORE PLANNING THE GONDOLA MOVE OF ANY MERCHANDISE FIXTURES NECESSARY TO CONSTRUCT WALLS.
6. SCHEDULE RELOCATION OF AP PANEL WITH WALMART AP TEAM.
7. CHECK IN MODULAR COMPONENTS.
8. COORDINATE WITH STORE PLANNING THAT ALL EQUIPMENT AND RACKS ARE CERTIFIED AND ON-SITE.

B. STAGING
1. VERIFY AVAILABLE STAGING AREA, INSIDE OF THE STORE, FOR CONSTRUCTION AND CONFIRM LAYOUT OF DUST PARTITIONS AND DUST DRAPE.
2. VERIFY AVAILABLE STAGING AREA, INSIDE OF THE STORE, FOR MODULAR COUNTERS, WALLS, EQUIPMENT AND RACKS.
3. MARK LOCATION OF WALLS, FRONT COUNTERS AND ALL PRIVACY WALLS ON THE FLOOR TO BE READY FOR NEW CONSTRUCTION. SPRAY WITH CLEAR COAT.
4. SCORE ROUTE OF ASSEMBLY MOVEMENT OF UNITS FROM STAGING TO PHARMACY INSTALL LOCATION AND COORDINATE REMOVAL OF ANY OBSTACLES WITH STORE PLANNING FIELD PROJECT MANAGER.

FIELD VERIFICATION
1. VERIFY ABOVE CEILING AND CONFIRM IF THERE ARE WALLS TO DECK OR CEILING JOISTS AND WIRE MESH.
2. VERIFY OPENING DIMENSIONS WHERE FRONT COUNTERS WILL BE INSTALLED.
3. VERIFY LOCATION OF AP PANEL, TYPICALLY IN CEILING NEAR RESTROOM.

STORE PLANNING RESPONSIBILITY

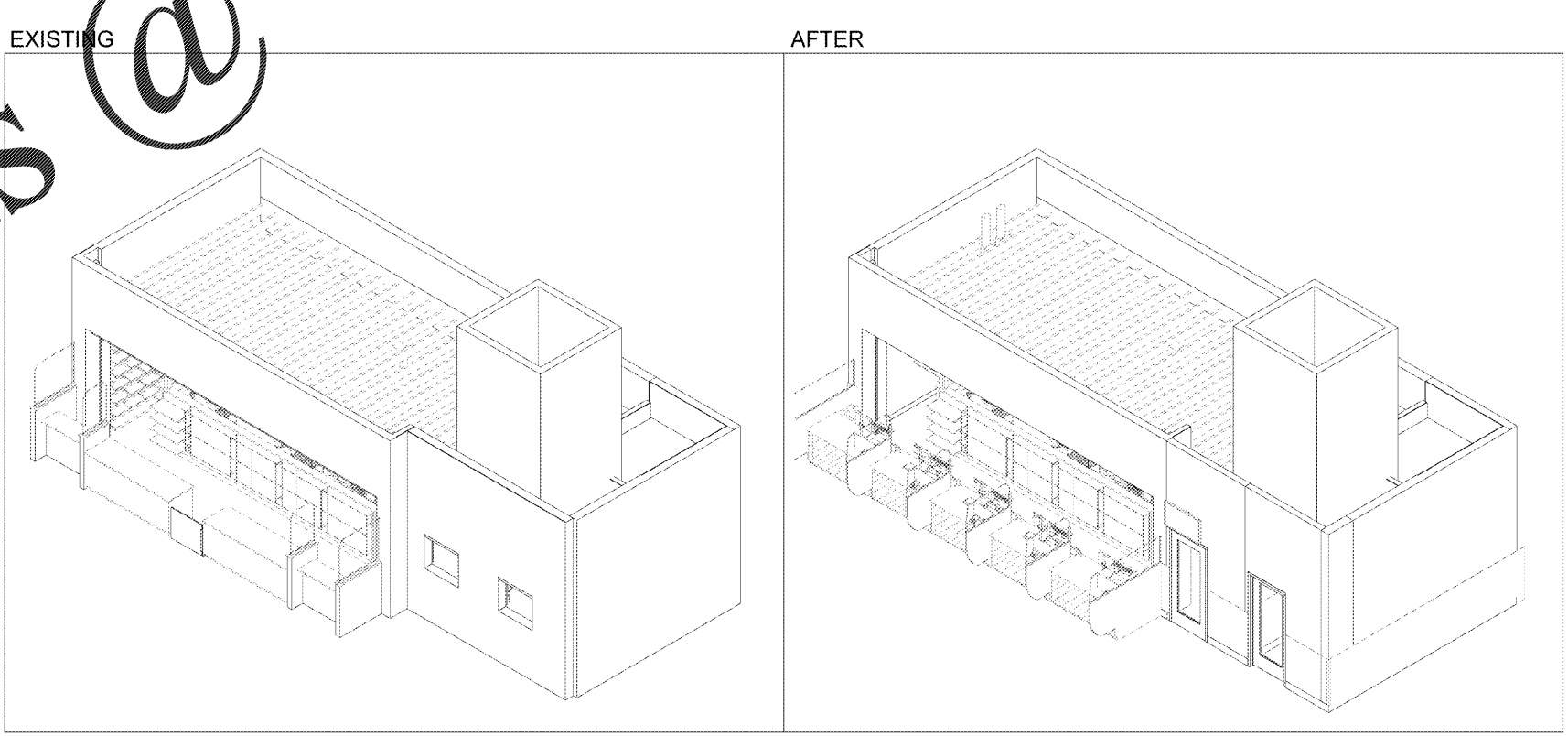
1. COORDINATE WITH GC ANY EQUIPMENT OR RACK RELOCATION & STAGING REQUIRED THE OVERNIGHT PHASING OF THE PROJECT.
2. ARRANGE FOR OVERNIGHT PHARMACIST PRESENCE.

DATA CABLING AND ASSET PROTECTION (AP) RESPONSIBILITY

1. SURVEY SCOPE OF WORK AND DEVELOP PLAN FOR PRE-ROUGH-IN RELOCATION FROM REGISTER EQUIPMENT RACK ROOM AND STAGING OF CABLE ABOVE CEILING GRID.
2. INSURE ALL COMPONENTS ARE ORDERED IN TIMELY MANNER AND SHIPPED ON-SITE.

ELECTRICIAN RESPONSIBILITY

1. REVIEW PLANS AND SCOPE WORK EARLY TO DETERMINE REQUIREMENTS PARTICULAR TO WORK PREVIOUSLY DONE ON-SITE.
2. DETERMINE NEARBY SERVICE PANELS OR RELOCATING SWITCH OR POWER RECEPTACLES.
3. VERIFY ALL NECESSARY INSPECTIONS WILL BE REQUIRED BASED ON SCOPE OF WORK. DEFINE SCHEDULE PERIODS.
4. WHEN INSPECTORS FOR A TRADE CALL DURING THE NIGHT TO APPROVE ELECTRICAL REVISIONS IF NOT, IT IS POSSIBLE TO PERFORM REVISIONS AND NEW REGISTERS WITHOUT AN INSPECTION UNTIL THE FOLLOWING MORNING.
5. VERIFICATION OF ELECTRICAL COMPONENTS AND ROUTING PRIOR TO NIGHT ONE, LOCATE ELECTRICAL PANELS AND ANY OTHER CURRENTLY ROUTED UNDER SLAB.
6. THE PHARMACY FREEZERS AND REFRIGERATORS MUST REMAIN ON AT ALL TIMES. IF POWER TO THE PANEL MUST BE MAINTAINED, PROVISIONS MUST BE MADE TO PROVIDE POWER TO THE UNITS.
7. VERIFY LOCATION OF ALL ELECTRICAL PANELS USED FOR PHARMACY POWER.



Original Plans