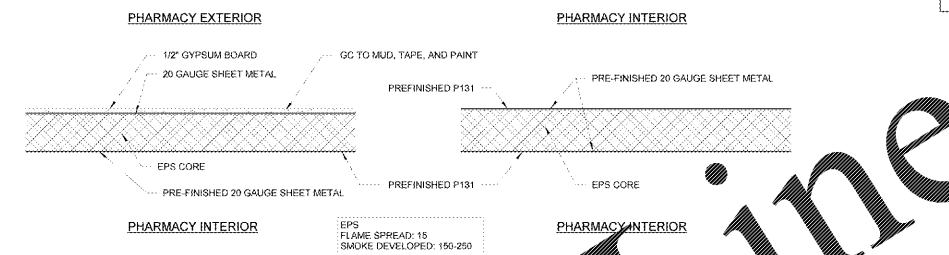


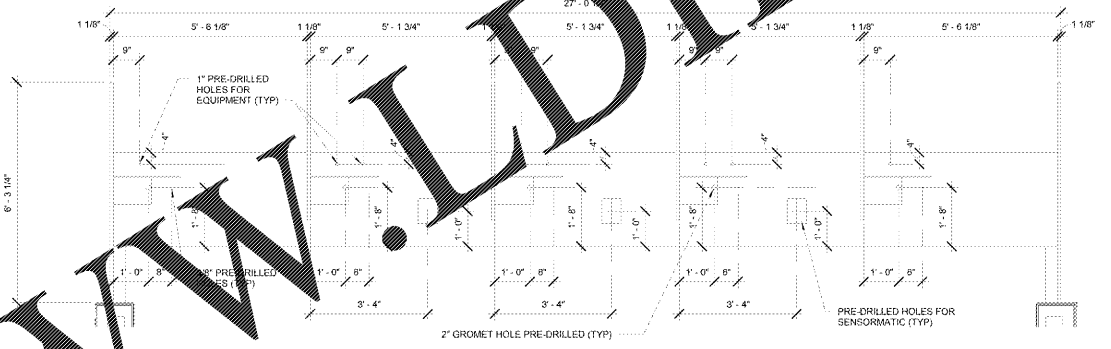
SHEET NOTES

THIS SHEET IS FOR REFERENCE ONLY. REFER TO MANUFACTURER'S INSTALLATION DRAWINGS AND SPECIFICATIONS FOR ADDITIONAL INFORMATION AND SPECIFIC DETAILS ON THE MODULAR WALLS AND COMPONENTS.  
ALL WALL PANELS AND CEILING PANELS FURNISHED BY OWNER, GC INSTALLED.  
SALES SIDE OF PANELS ARE PRE LAMINATED WITH GYPSUM GC TO TAPE, MUD, AND PAINT.  
INTERIOR SIDES OF PANELS ARE PRE-FINISHED, GC TO CAULK SEAMS WHERE MODULAR WALLS MEET AT INSIDE OF PHARMACY AND HEALTH SERVICES ROOM.  
FOR MODULAR WALL PANEL COORDINATION CONTACT: HAINES, JONES & CADBURY CUSTOMER SERVICE (800) 439-7099 WMF@HJCINC.COM FOR MODULAR WALL PANEL COORDINATION.

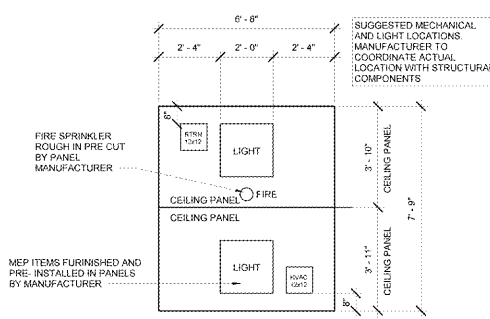
- 1 GC TO CAULK SEAMS WHERE MODULAR WALL PANELS MEET ON INSIDE OF PHARMACY AND HEALTH SERVICES ROOM.
- 2 PAINT ALL EXPOSED CONDUIT TO MATCH ADJACENT WALLS.
- 3 THIS PROTOTYPE USES PRE-WIRED MODULAR WALLS FOR THE NEW FRONT COUNTER AND HEALTH SERVICES ROOM. COORDINATE WITH THE LOCAL JURISDICTION ON FINAL INSPECTIONS.
- 4 REFER TO MANUFACTURER'S INSTALLATION DRAWINGS AND SPECIFICATIONS FOR ADDITIONAL INFORMATION AND SPECIFIC DETAILS ON THE MODULAR WALLS AND COMPONENTS.



3 MODULAR WALL PANEL TYPES  
1 1/2" = 1'-0"

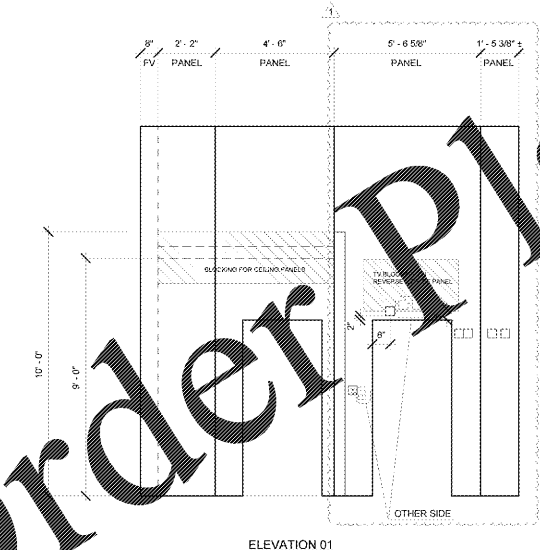


2 COUNTER HOLE PLAN  
1/2" = 1'-0"

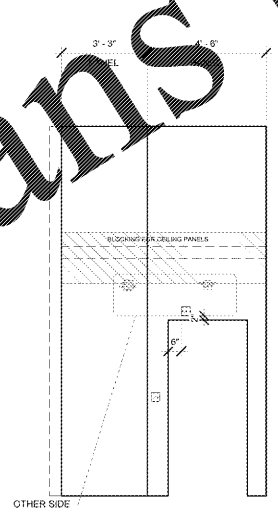


CEILING

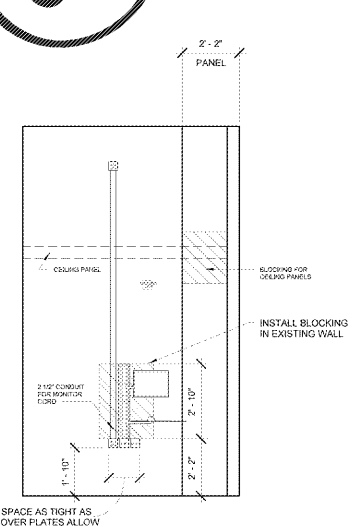
ACTUAL PANEL SIZES MAY VARY BASED ON FIELD CONDITIONS, GC TO COORDINATE WITH PANEL MANUFACTURER  
GC TO REFERENCE MANUFACTURER'S INSTALLATION DRAWINGS FOR SEQUENCE OF WALL INSTALLATION AND ASSEMBLY  
SOME PANELS WILL BE OTHER SIZES AND WILL NEED TO BE MODIFIED TO FIT IN THE FIELD. COORDINATE WITH VENDOR FOR INSTRUCTIONS



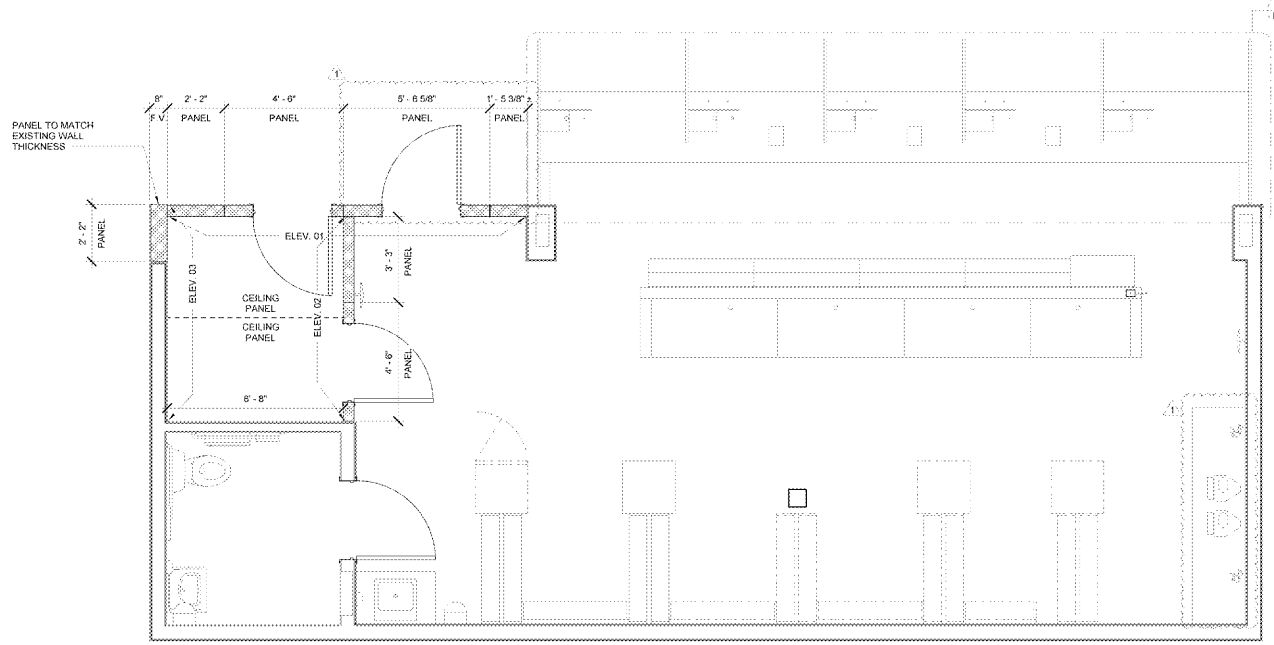
ELEVATION 01



ELEVATION 02



ELEVATION 03



1 MODULAR PANEL PLAN  
3/8" = 1'-0"  
(FOR REFERENCE ONLY)

STIPULATION FOR THE...  
THIS DRAWING AND SPECIFICATIONS...  
THESE DRAWINGS AND SPECIFICATIONS...  
FOR THE PROJECT...  
THESE DRAWINGS AND SPECIFICATIONS...  
FOR THE PROJECT...  
THESE DRAWINGS AND SPECIFICATIONS...  
FOR THE PROJECT...

CONSULTANTS

Walmart  
GORDONSVILLE, VA  
884 CAMP CREEK PKWY., LOUISA, VA 23083  
STORE NO. 4892-223  
17-0727-25 | PHOTO: 143 SURCOR  
2018 Remodel Proto

ISSUE BLOCK

1	REV 3	04/26/18

CHECKED BY: DF  
DRAWN BY: TP  
PROTO CYCLE: 02/25/18  
DOCUMENT DATE: 04/10/18

42 PIDTH-5  
MODULAR

PANEL PLAN

SHEET: PHM4

Order Plans @ WWW.LDLine.com