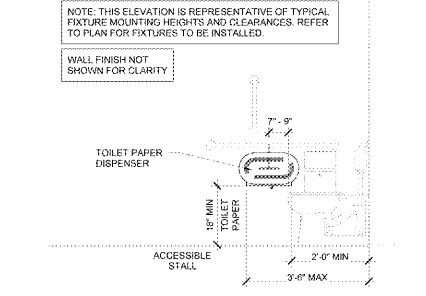
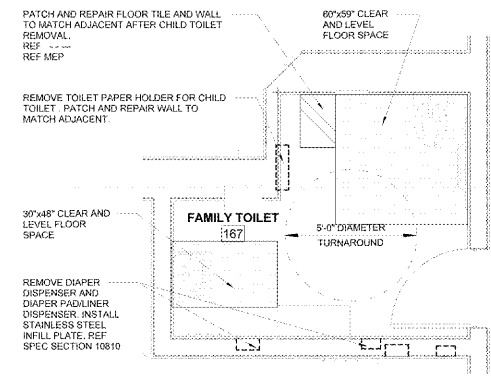


CUSTOMER RESTROOM FIXTURE SCHEDULE	
MARK	ROOM NAME
111	CUSTOMER MEN
	THICKNESS OF PARTITION PILASTERS 1"
	TYPE OF LATCH ON PARTITION DOORS SURFACE MOUNTED
	TYPE OF WATER CLOSET TANKLESS FLUSH VALVE
	NUMBER OF 18" WIDE MIRRORS 4
	DIAPER DISPENSER INFILL PLATE 1
	LINER DISPENSER INFILL PLATE 1
	ELECTRIC HAND DRYER 1
112	CUSTOMER WOMEN
	THICKNESS OF PARTITION PILASTERS 1"
	TYPE OF LATCH ON PARTITION DOORS SURFACE MOUNTED
	TYPE OF WATER CLOSET TANKLESS FLUSH VALVE
	NUMBER OF 18" WIDE MIRRORS 4
	DIAPER DISPENSER INFILL PLATE 1
	LINER DISPENSER INFILL PLATE 1
	SANITARY NAPKIN DISPENSER INFILL PLATE 1
	TOILET PAPER HOLDER 4
165	CUSTOMER MEN
	THICKNESS OF PARTITION PILASTERS 1"
	TYPE OF LATCH ON PARTITION DOORS SURFACE MOUNTED
	TYPE OF WATER CLOSET TANKLESS FLUSH VALVE
	NUMBER OF 18" WIDE MIRRORS 3
	DIAPER DISPENSER INFILL PLATE 1
	LINER DISPENSER INFILL PLATE 1
	ELECTRIC HAND DRYER 1
166	CUSTOMER WOMEN
	THICKNESS OF PARTITION PILASTERS 1"
	TYPE OF LATCH ON PARTITION DOORS SURFACE MOUNTED
	TYPE OF WATER CLOSET TANKLESS FLUSH VALVE
	NUMBER OF 18" WIDE MIRRORS 3
	DIAPER DISPENSER INFILL PLATE 1
	LINER DISPENSER INFILL PLATE 1
	SANITARY NAPKIN DISPENSER INFILL PLATE 1
	ELECTRIC HAND DRYER 1
	TOILET PAPER HOLDER 2
167	FAMILY
	THICKNESS OF PARTITION PILASTERS 1"
	TYPE OF LATCH ON PARTITION DOORS SURFACE MOUNTED
	TYPE OF WATER CLOSET TANKLESS FLUSH VALVE
	NUMBER OF 24" WIDE MIRRORS 1
	DIAPER DISPENSER INFILL PLATE 1
	LINER DISPENSER INFILL PLATE 1

NOTE: INFORMATION CONTAINED IN THIS SCHEDULE IS FOR INFORMATIONAL PURPOSES ONLY. CONTRACTOR IS RESPONSIBLE FOR VERIFICATION OF ACTUAL CONDITIONS, MATERIALS AND DIMENSIONS NECESSARY FOR REPLACEMENT, INSTALLATION OR REFURISHING.

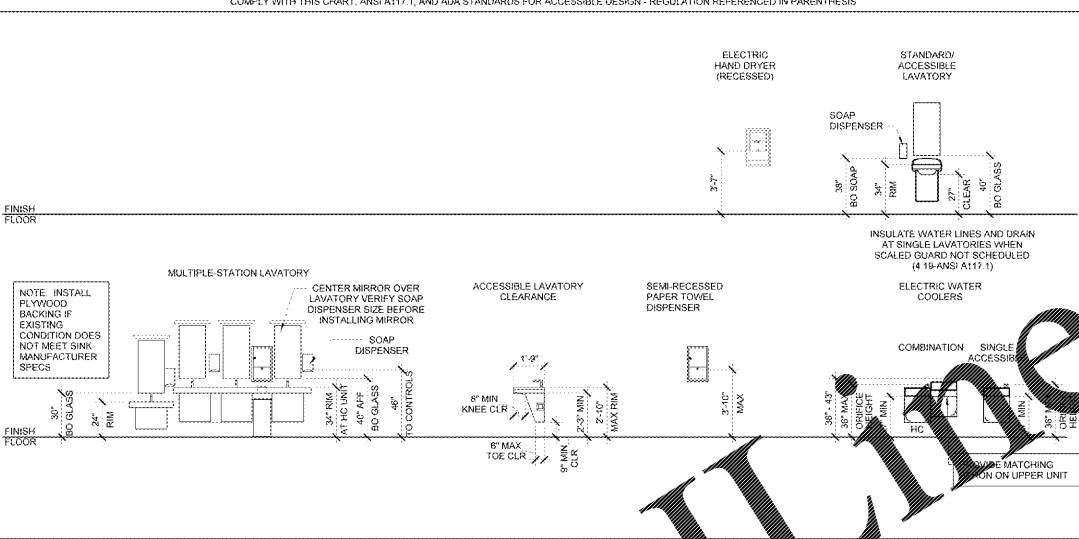


4 ENLARGED STALL ELEVATION
1/2" = 1'-0"



3 ENLARGED FAMILY RESTROOM PLAN
3/8" = 1'-0"

FIXTURE HEIGHTS AND CLEARANCES

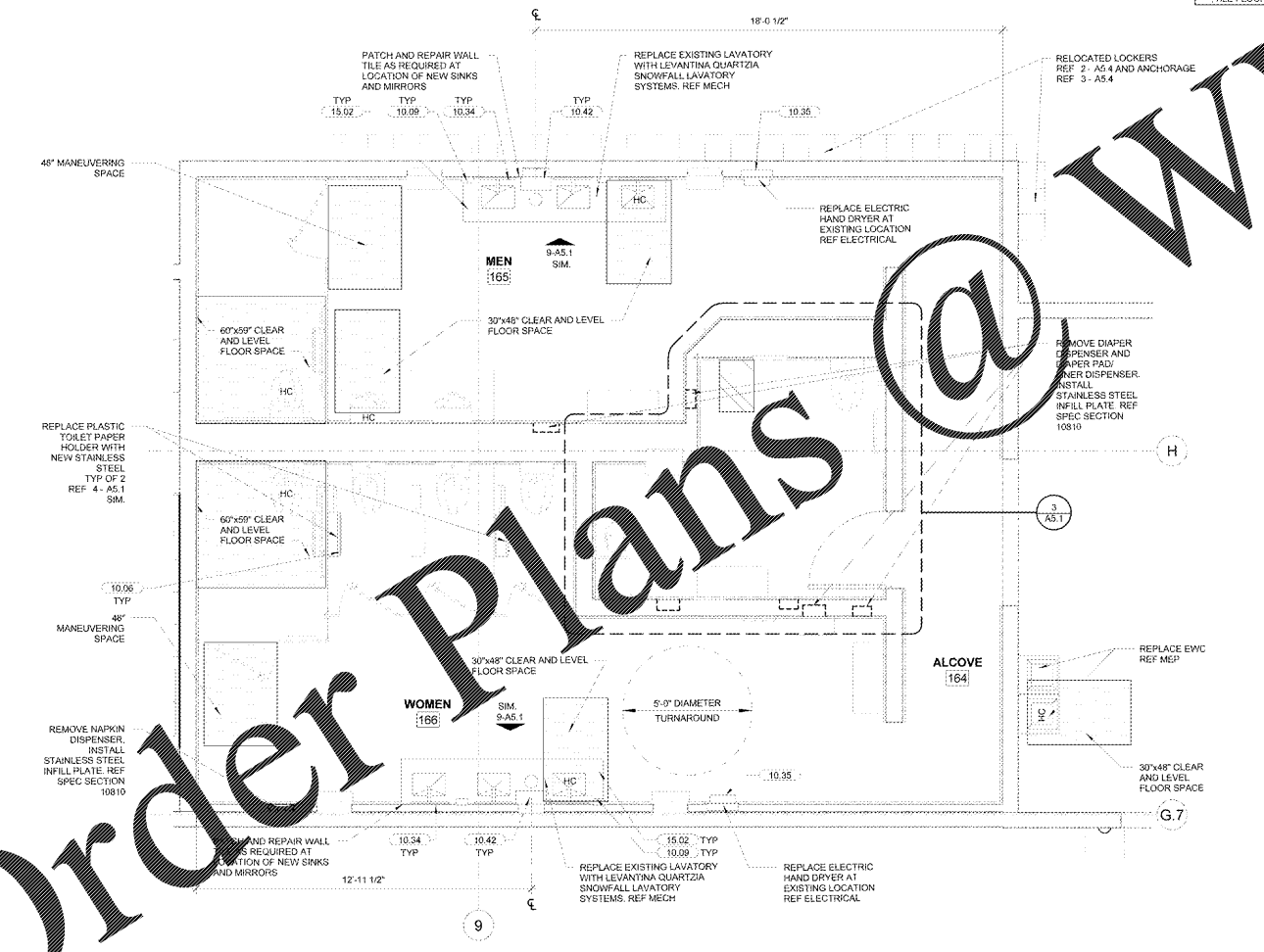


9 FIXTURE HEIGHTS AND CLEARANCES
1/4" = 1'-0"

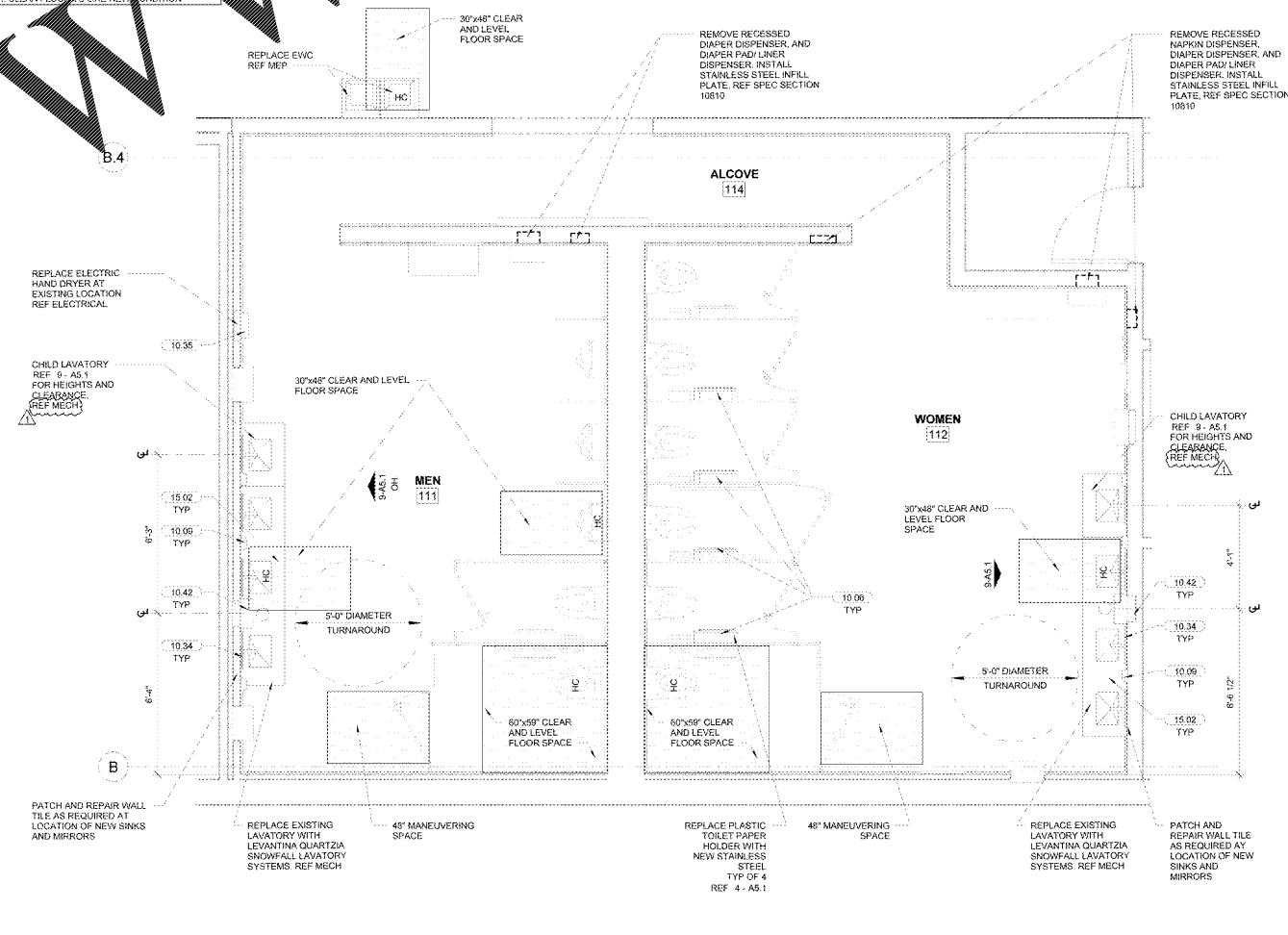
111 AND 165 CUSTOMER MEN, 112 AND 166 CUSTOMER WOMEN AND 167 FAMILY TOILET LIMITED - 114 AND 164 RESTROOM ALCOVE

GENERAL:
ALL FINISHES ARE EXISTING TO REMAIN, EXCEPT AS NOTED BELOW.
CLEAN FLOOR, WALL FINISH, CEILING, PLUMBING FIXTURES, TOILET ACCESSORIES, PARTITIONS AND HARDWARE TO LIKE-NEW CONDITION. REF SPEC 01740. COORDINATE WITH STORE MANAGEMENT FOR SIGN-OFF AFTER RESTROOMS HAVE BEEN CLEANED.

CEILING: PAINT P131
WALLS: GYP; PAINT P131
FLOOR: TILE FLOOR, CLEAN FLOOR TO LIKE-NEW CONDITION



2 ENLARGED REAR RESTROOM PLAN
3/8" = 1'-0"



1 ENLARGED FRONT RESTROOM PLAN
3/8" = 1'-0"

SHEET NOTES

- INTERIOR PLAN DIMENSIONS ARE TO FACE OF FINISH LING.
- REF SHEET A8 FOR SCHEDULE FINISH KEY AND GENERAL FINISH NOTES.
- REMOVE ANY EXISTING SEALANT AND PROVIDE A CONTINUOUS BEAD OF SEALANT IN THE FOLLOWING LOCATIONS:
 - PERIMETER OF ALL TOILETS AND URINALS TO WALLS AND FLOORS.
 - PERIMETER OF SINK TO WALL.
 - PERIMETER OF MIRRORS TO WALL.
 - PERIMETER OF DIAPER CHANGING TABLE TO WALL.
- ORDER ENTIRE RESTROOM PACKAGE OF MATERIALS FROM THE VENDOR LISTED IN THE SPECIFICATIONS. SUBSTITUTIONS ARE NOT ALLOWED.
- FOR ALL TOILET PARTITIONS TO REMAIN, REPLACE ALL PILASTER BRUSH PARTITION DOOR HINGES AND LATCHES. TOILET PARTITIONS SHALL BE SURFACE MOUNTED. SURFACE MOUNTED LATCHES TO BE PLACED AS SURFACE MOUNTED LATCHES. REMOVE THE STORE WITH PUBLIC AND ASSOCIATE RESTROOMS. BEAMS MOVED TO CYCLUM BOARD CEILING TO PREVENT WHERE FIXTURES HAVE BEEN REMOVED.

KEYNOTES

- TOILET PAPER HOLDER
- SOAP DISPENSER, MOUNT AS SHOWN IN DETAIL 9-A5.1, REF SPEC
- REMOVE EXISTING MIRROR AND INSTALL NEW MIRROR OVER SINK FAUCET
- ELECTRIC HAND DRYER (RECESSED)
- SEMI-RECESSED PAPER TOWEL DISPENSER
- WALL MOUNTED LAVATORY, REF MECH



REDESIGN
RETAIL DESIGN COLLABORATIVE
1101 E. 30th St., Ste. 110
Arlington, VA 22202
703.526.3665
info@re-design.com

STIPULATION FOR THE CONTRACTOR TO VERIFY ALL CONDITIONS AND DIMENSIONS BEFORE BEGINNING WORK. THE CONTRACTOR SHALL BE RESPONSIBLE FOR VERIFYING ALL CONDITIONS AND DIMENSIONS BEFORE BEGINNING WORK. THE CONTRACTOR SHALL BE RESPONSIBLE FOR VERIFYING ALL CONDITIONS AND DIMENSIONS BEFORE BEGINNING WORK.

Walmart
GORDONSVILLE, VA
164 CAMP CREEK PKWY., LOUISA, VA 23093
STORE NO.: 4652-223
143 SSGROR
17-027-25 | PHOTO:
2018 Remodel Photo

ISSUE BLOCK

1	REV 3	04/26/18
---	-------	----------

CHECKED BY: DF
DRAWN BY: TP
PROTO CYCLE: 02/26/18
DOCUMENT DATE: 04/10/18

RESTROOM PLANS AND DETAILS

SHEET: **A5.1**