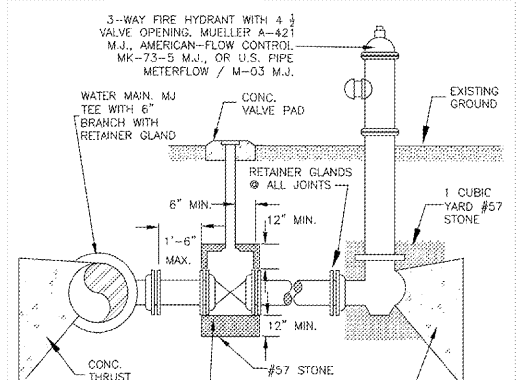


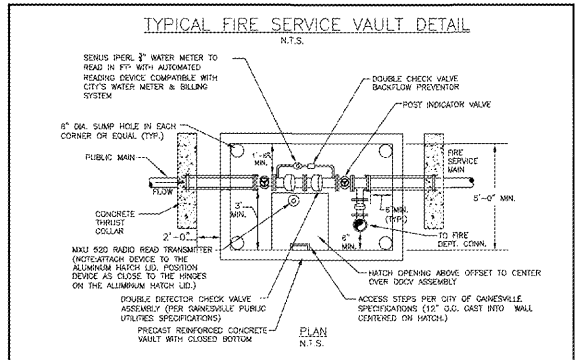
**GATE VALVE INSTALLATION DETAIL**  
SCALE: NTS

CITY OF GAINESVILLE DEPARTMENT OF WATER RESOURCES  
GATE VALVE INSTALLATION DETAIL  
DATE: JAN 2013 SD - W3



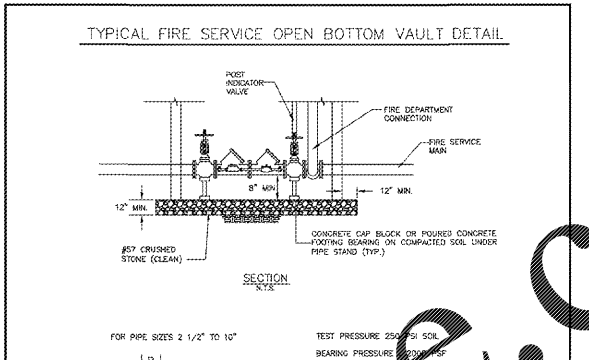
**TYPICAL FIRE HYDRANT DETAIL**  
SCALE: NTS

CITY OF GAINESVILLE DEPARTMENT OF WATER RESOURCES  
TYPICAL FIRE HYDRANT DETAIL  
DATE: JAN 2013 SD - W5



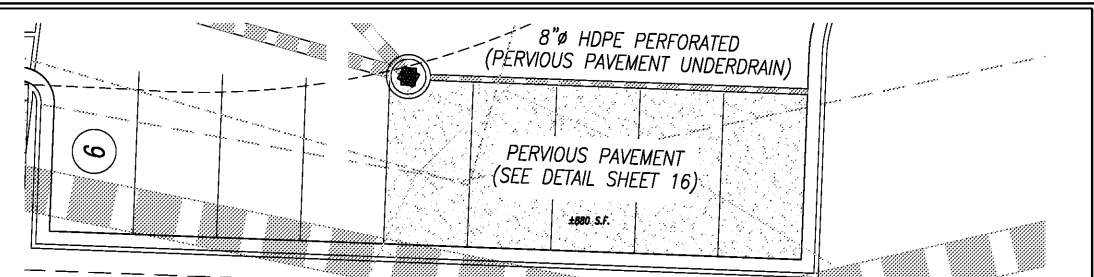
**TYPICAL FIRE VAULT DETAIL (1 OF 2)**  
SCALE: NTS

CITY OF GAINESVILLE DEPARTMENT OF WATER RESOURCES  
TYPICAL FIRE VAULT DETAIL (1 OF 2)  
DATE: JAN 2013 SD - W5

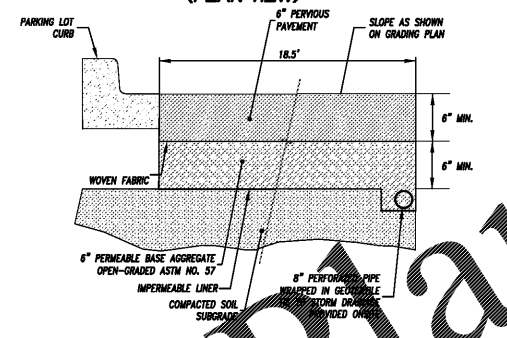


**TYPICAL FIRE VAULT DETAIL (2 OF 2)**  
SCALE: NTS

CITY OF GAINESVILLE DEPARTMENT OF WATER RESOURCES  
TYPICAL FIRE VAULT DETAIL (2 OF 2)  
DATE: JAN 2013 SD - W11B

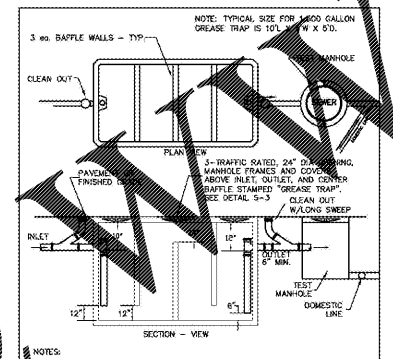


**PERVIOUS PAVEMENT DETAIL (PLAN VIEW)**



**PERVIOUS PAVEMENT DETAIL**

**PERVIOUS PAVEMENT DETAIL**



**DESIGN CRITERIA**

THE FOLLOWING DESIGN EQUATIONS ARE TO BE USED WHEN SIZING A GREASE TRAP:  
MINIMUM SIZE: 1500 GALLONS

- RESTAURANTS  
 $S = GS \times HR/12 \times LF =$  GREASE TRAP SIZE IN GALLONS  
 WHERE:  
 $S =$  NUMBER OF SEATS IN DINING AREA  
 $GS =$  GALLONS OF WASTEWATER PER SEAT (USE 25 GAL. PER SEAT MIN.)  
 $HR =$  NUMBER OF HOURS OPEN  
 $LF =$  LOADING FACTOR - 1.25 INTERSTATE FREEWAYS  
 1.00 OTHER FREEWAYS  
 1.00 RECREATIONAL AREAS  
 0.80 MAIN HIGHWAYS  
 0.50 OTHER HIGHWAYS
- HOSPITALS, NURSING HOMES, OTHER TYPE COMMERCIAL KITCHENS WITH VARIOUS SEATING CAPACITIES:  
 WHERE:  
 $S =$  NUMBER OF SEATS IN DINING AREA  
 $GS =$  GALLONS OF WASTEWATER PER SEAT (USE 25 GAL. PER SEAT MIN.)  
 $HR =$  NUMBER OF HOURS OPEN  
 $LF =$  LOADING FACTOR - 1.25

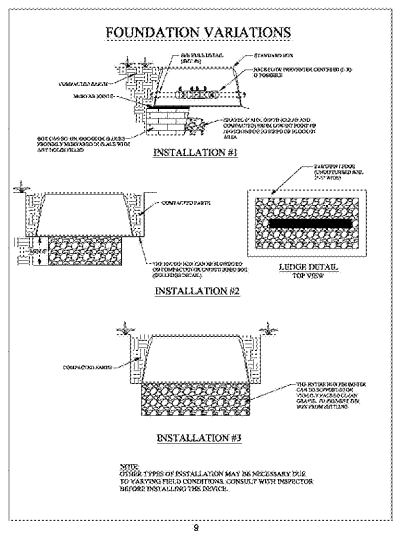
NOTE:  
 1. SEE TOWN OF BRASELTON ENGINEER FOR SEWAGE FLOW SCHEDULES AND ADDITIONAL INFORMATION.  
 2. DEVELOPMENT PERMIT WILL NOT BE ISSUED WITHOUT APPROVED GREASE TRAP SIZING CALCULATIONS.

**TOWN OF BRASELTON WATER & SEWER DEPARTMENTS**

DATE	BY	CHK BY	APP BY	DATE
STANDARD DETAIL	GREASE TRAP DETAIL	DATE: MAY 2009	DATE: MAY 2009	DATE: MAY 2009

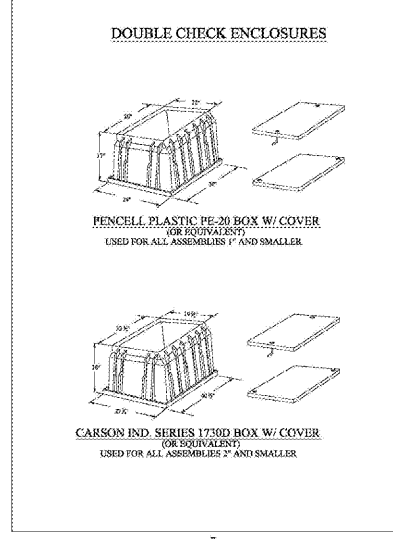
**TOWN OF BRASELTON WATER & SEWER DEPARTMENTS**

DATE	BY	CHK BY	APP BY	DATE
STANDARD DETAIL	GREASE TRAP DESIGN CALCULATIONS	DATE: MAY 2009	DATE: MAY 2009	DATE: MAY 2009



**FOUNDATION VARIATIONS**

NOTE: OTHER TYPES OF INSTALLATION MAY BE NECESSARY DEPENDENT UPON SOIL CONDITIONS. CONSULT WITH INSPECTOR BEFORE INSTALLING THIS DEVICE.



**DOUBLE CHECK ENCLOSURES**

PENCELL PLASTIC PE-20 BOX W/ COVER (OR EQUIVALENT) USED FOR ALL ASSEMBLIES 1" AND SMALLER.

CARSON IND. SERIES 17500 BOX W/ COVER (OR EQUIVALENT) USED FOR ALL ASSEMBLIES 2" AND SMALLER.

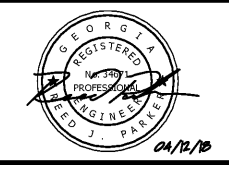


Development Planning & Engineering, Inc.  
civil, mechanical, transportation  
5075 BRASELTON INDUSTRIAL WAY  
SUITE 100  
ALBUQUERQUE, GEORGIA 30518  
(404) 271-2868  
www.dpengr.com

PREPARED FOR:  
**FRIENDSHIP ROAD PROPERTIES, LLC**  
3101 TOWERCREEK PKWY.  
SUITE 420  
ATLANTA, GA 30339  
MR. RANDY HERRON  
(404) 578-8296

PROJECT NAME:  
**CREEKSIDE RETAIL**

TASK:  
**CONSTRUCTION DETAILS**



PROJECT INFORMATION:  
CREEKSIDE RETAIL  
Project Name  
15-082F  
Project Number  
OLD WINDER HIGHWAY  
Project Address  
G.M.D. 1749  
Parcel No.(s)  
Land Lot / District  
TOWN OF BRASELTON  
HALL COUNTY  
County, State

DATE	REVISION	NO.	1	2	3	4	5	6	7	8	9

RJP DESIGN AS SHOWN SCALE  
RJP DRAWN 16 OF 17  
KWB CHECKED SHEET  
03/20/18 DATE 15-082F PROJECT NO.



Order Plans @