



5075 W. STOL INDUSTRIAL WAY
SUITE 100
DUNWOODY, GEORGIA 30018
(404) 271-2868
www.dpengr.com

PREPARED FOR:
FRIENDSHIP ROAD PROPERTIES, LLC
3101 TOWERCREEK PKWY.
SUITE 420
ATLANTA, GA 30339
MR. RANDY HERRON
(404) 578-8296

PROJECT NAME:
CREEKSIDE RETAIL

TASK:
EROSION, SEDIMENT AND POLLUTION CONTROL PLAN - FINAL PHASE



PROJECT INFORMATION:
CREEKSIDE RETAIL
Project Name
15-082F
Project Number
OLD WINDER HIGHWAY
Project Address
G.M.D. 1749
Parcel No.(s)
Land Lot / District
TOWN OF BRASELTON
HALL COUNTY
County, State

| DATE | REVISION | NO. | BY | CHKD | DATE |
|------|----------|-----|----|------|------|
| | | 1 | | | |
| | | 2 | | | |
| | | 3 | | | |
| | | 4 | | | |
| | | 5 | | | |
| | | 6 | | | |
| | | 7 | | | |
| | | 8 | | | |
| | | 9 | | | |
| | | 10 | | | |

R/J P DESIGN AS SHOWN SCALE
R/J P DRAWN 9 of 17
KWB CHECKED SHEET
03/20/18 DATE 15-082F PROJECT NO.

LEGEND

- IP.S. IRON PIN SET (1/2" REBAR)
- IP.S. IRON PIN SET (1/2" REBAR)
- IP.F. IRON PIN FOUND
- C.M.F. CONCRETE MONUMENT FOUND
- O.T.P. OPEN TOP PIPE
- B.M. BENCHMARK
- T.B.M. TEMPORARY BENCHMARK
- C.T.P. CRIMP TOP PIPE
- M.T. MARKED TREE
- D.H. DRILL HOLE
- L.L.L. LAND LOT LINE
- E. PROPERTY LINE
- C. CENTERLINE
- B. BUILDING LINE
- R/W. RIGHT-OF-WAY
- S.S.E. SANITARY SEWER EASEMENT
- D.E. DRAINAGE EASEMENT
- C.&C. CURB & GUTTER
- B.O.C. BACK OF CURB
- T.O.C. TOP OF CURB
- G.M.D. GEORGIA METRIC DISTRICT
- P.L.B./P.G. PLAT BOOK/PAGE
- D.B./P.G. DEED BOOK/PAGE
- P.O.B. POINT OF BEGINNING
- T.P.O.B. TRUE POINT OF BEGINNING
- ELEV. ELEVATION
- I.E. INVERT ELEVATION
- F.F.E. FINISHED FLOOR ELEVATION
- E.P. EDGE OF PAVEMENT
- A.S.P. ALUMINIZED STEEL PIPE TYPE 2
- R.C.P. REINFORCED CONCRETE PIPE
- D.I.P. DUCTILE IRON PIPE
- P.V.C. POLYVINYLCHLORIDE PIPE
- V.C.P. VITRIFIED CLAY PIPE
- L.P. LIGHT POLE
- P.P. POWER POLE OR UTILITY POLE
- M.H. MANHOLE
- S.W.C.B. SINGLE WING CATCH BASIN
- D.W.C.B. DOUBLE WING CATCH BASIN
- J.B. JUNCTION BOX
- O.S. OUTLET STRUCTURE
- F.E.S. FLARED END SECTION
- H.W. HEADWALL
- D.I. DROP INLET
- G.I. GRATE INLET
- F.I. FIRE INTRANT
- W.V. WATER VALVE
- W.M. WATER METER
- G.V. GAS VALVE
- +94.2 EXISTING GROUND ELEVATION
- 94.2 PROPOSED GROUND ELEVATION
- 91.0 EXISTING CONTOUR ELEVATION
- 91.0 PROPOSED CONTOUR ELEVATION
- P.W. POWERLINE
- T.P. TREE PROTECTION FENCE
- CRZ CRITICAL ROOT ZONE
- U.T. UNDERGROUND TELEPHONE LINE
- G. GAS LINE
- C.T.V. CABLE T.V. LINE
- U.C.T.V. UNDERGROUND CABLE T.V. LINE
- S. SANITARY SEWER LINE
- W. WATER LINE / PIPE
- F. FENCE LINE
- B.R./C.R./S.R. BRANCH/CREEK/STREAM CENTERLINE
- D.C. DITCH / DRAIN CENTERLINE
- F.H.Z. FLOOD HAZARD ZONE LIMITS
- T. TREE
- L.A. LIMITED ACCESS
- S. STATION
- N/O. NOW OR FORMERLY
- T.B.L. TEST BORING LOCATION
- W.E. WATER LINE EASEMENT

WASHOUT OF THE CONCRETE DRUM AT THE CONSTRUCTION SITE IS PROHIBITED.

SURFACE ROUGHENING (Su) SHOULD BE APPLIED TO ALL SLOPES STEEPER THAN 3:1 THAT ARE NOT COVERED BY ROLLED EROSION CONTROL PRODUCTS, LABELED AS (Ss) ON THE EROSION CONTROL PLANS.

NOTE: THE EROSION CONTROL INITIAL PHASE CLEARING LIMITS SHOULD BE RESTRICTED TO THE AREAS REQUIRED TO BE DISTURBED FOR THE INSTALLATION OF PERIMETER CONTROL AND INITIAL SEDIMENT STORAGE.

EROSION CONTROL STATEMENTS:
THE ESCAPE OF SEDIMENT FROM THE SITE SHALL BE PREVENTED BY THE INSTALLATION OF EROSION AND SEDIMENT CONTROL MEASURES AND PRACTICES PRIOR TO, OR CONCURRENT WITH, LAND DISTURBING ACTIVITIES.
EROSION CONTROL MEASURES WILL BE MAINTAINED AT ALL TIMES. IF FULL IMPLEMENTATION OF THE APPROVED PLAN DOES NOT PROVIDE FOR EFFECTIVE EROSION CONTROL, ADDITIONAL EROSION AND SEDIMENT CONTROL MEASURES SHALL BE IMPLEMENTED TO CONTROL OR TREAT THE SEDIMENT SOURCE.
ANY DISTURBED AREA LEFT EXPOSED FOR A PERIOD GREATER THAN 14 DAYS SHALL BE STABILIZED WITH MULCH OR TEMPORARY SEEDING.

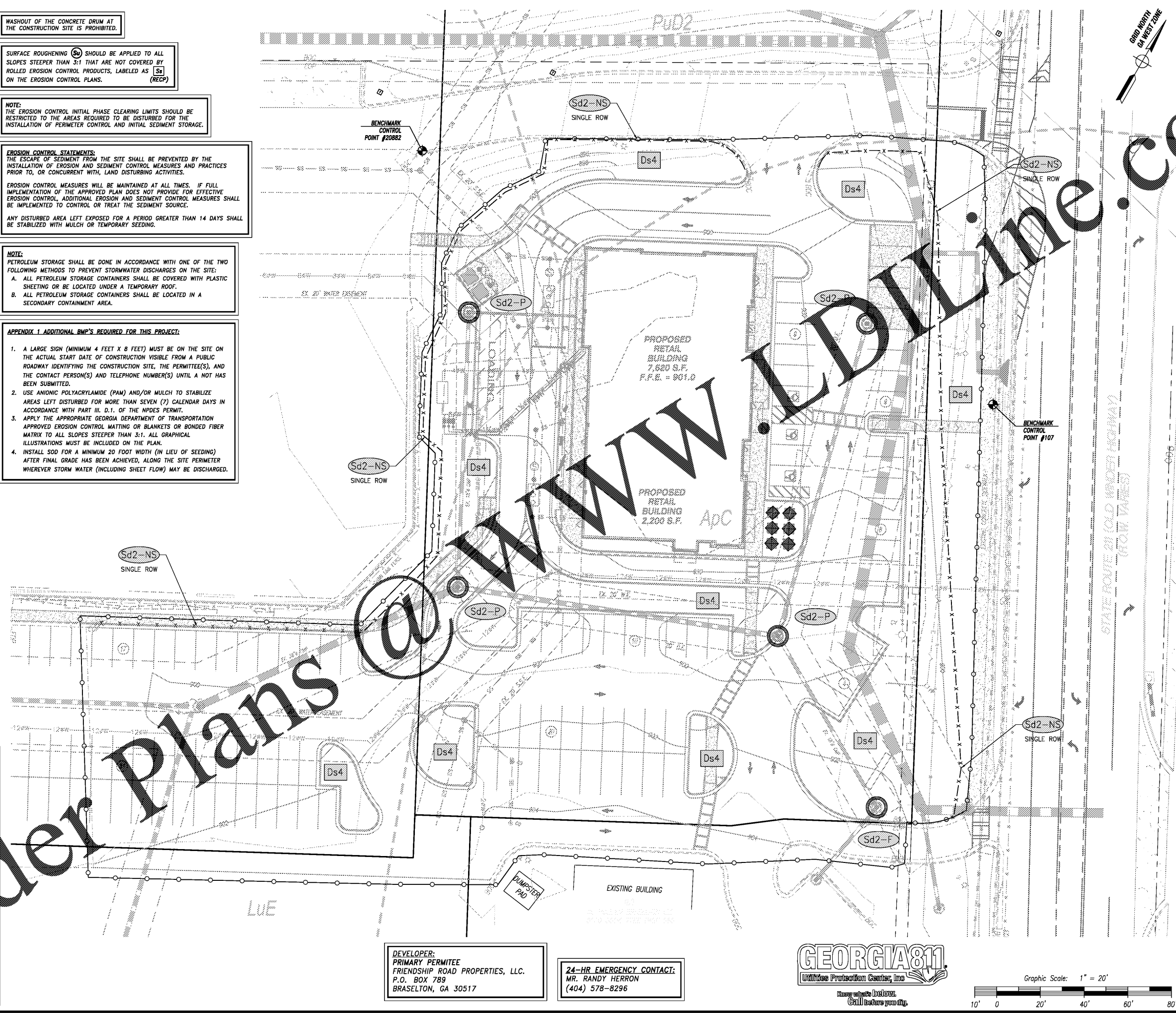
NOTE:
PETROLEUM STORAGE SHALL BE DONE IN ACCORDANCE WITH ONE OF THE TWO FOLLOWING METHODS TO PREVENT STORMWATER DISCHARGES ON THE SITE:
A. ALL PETROLEUM STORAGE CONTAINERS SHALL BE COVERED WITH PLASTIC SHEETING OR BE LOCATED UNDER A TEMPORARY ROOF.
B. ALL PETROLEUM STORAGE CONTAINERS SHALL BE LOCATED IN A SECONDARY CONTAINMENT AREA.

- APPENDIX 1 ADDITIONAL BMP'S REQUIRED FOR THIS PROJECT:**
- A LARGE SIGN (MINIMUM 4 FEET X 8 FEET) MUST BE ON THE SITE ON THE ACTUAL START DATE OF CONSTRUCTION VISIBLE FROM A PUBLIC ROADWAY IDENTIFYING THE CONSTRUCTION SITE, THE PERMITEE(S), AND THE CONTACT PERSON(S) AND TELEPHONE NUMBER(S) UNTIL A NOT HAS BEEN SUBMITTED.
 - USE ANIONIC POLYACRYLAMIDE (PAM) AND/OR MULCH TO STABILIZE AREAS LEFT DISTURBED FOR MORE THAN SEVEN (7) CALENDAR DAYS IN ACCORDANCE WITH PART III, D.1. OF THE NPDES PERMIT.
 - APPLY THE APPROPRIATE GEORGIA DEPARTMENT OF TRANSPORTATION APPROVED EROSION CONTROL MATTING OR BLANKETS OR BONDED FIBER MATRIX TO ALL SLOPES STEEPER THAN 3:1. ALL GRAPHICAL ILLUSTRATIONS MUST BE INCLUDED ON THE PLAN.
 - INSTALL SOD FOR A MINIMUM 20 FOOT WIDTH (IN LIEU OF SEEDING) AFTER FINAL GRADE HAS BEEN ACHIEVED, ALONG THE SITE PERIMETER WHEREVER STORM WATER (INCLUDING SHEET FLOW) MAY BE DISCHARGED.

CONTROL POINT #107
DESCRIPTION: PK NAIL
NORTHING: 1500162.2400
EASTING: 2398925.8069
ELEVATION: 898.23

CONTROL POINT #20882
DESCRIPTION: PK NAIL
NORTHING: 1500132.2403
EASTING: 2398641.6719
ELEVATION: 888.12

- EROSION CONTROL LEGEND**
- Ds1 DISTURBED AREA STABILIZATION (WITH MULCHING ONLY)
 - Ds2 DISTURBED AREA STABILIZATION (WITH TEMPORARY SEEDING)
 - Ds3 DISTURBED AREA STABILIZATION (WITH PERMANENT SEEDING)
 - Ds4 DISTURBED AREA STABILIZATION (WITH SODDING)
 - Du DUST CONTROL ON DISTURBED AREAS
 - Co CONSTRUCTION EXIT
 - Di DIVERSION
 - Sd1-S TYPE C SILT FENCE
 - Sd1-NS TYPE C SILT FENCE NON-SENSITIVE
 - Sd2-F FILTER FABRIC WITH SUPPORTING FRAME
 - Sd2-P CURB INLET PROTECTION
 - Su SURFACE ROUGHENING
 - Ss SLOPE STABILIZATION
 - LIMITS OF DISTURBANCE



DEVELOPER:
PRIMARY PERMITEE
FRIENDSHIP ROAD PROPERTIES, LLC.
P.O. BOX 789
BRASELTON, GA 30517

24-HR EMERGENCY CONTACT:
MR. RANDY HERRON
(404) 578-8296

