

ISSUE RECORD  
NO. DATE REVISION

ISSUE RECORD  
NO. DATE REVISION

ISSUE RECORD  
NO. DATE REVISION

ISSUE RECORD  
NO. DATE REVISION

ISSUE RECORD  
NO. DATE REVISION

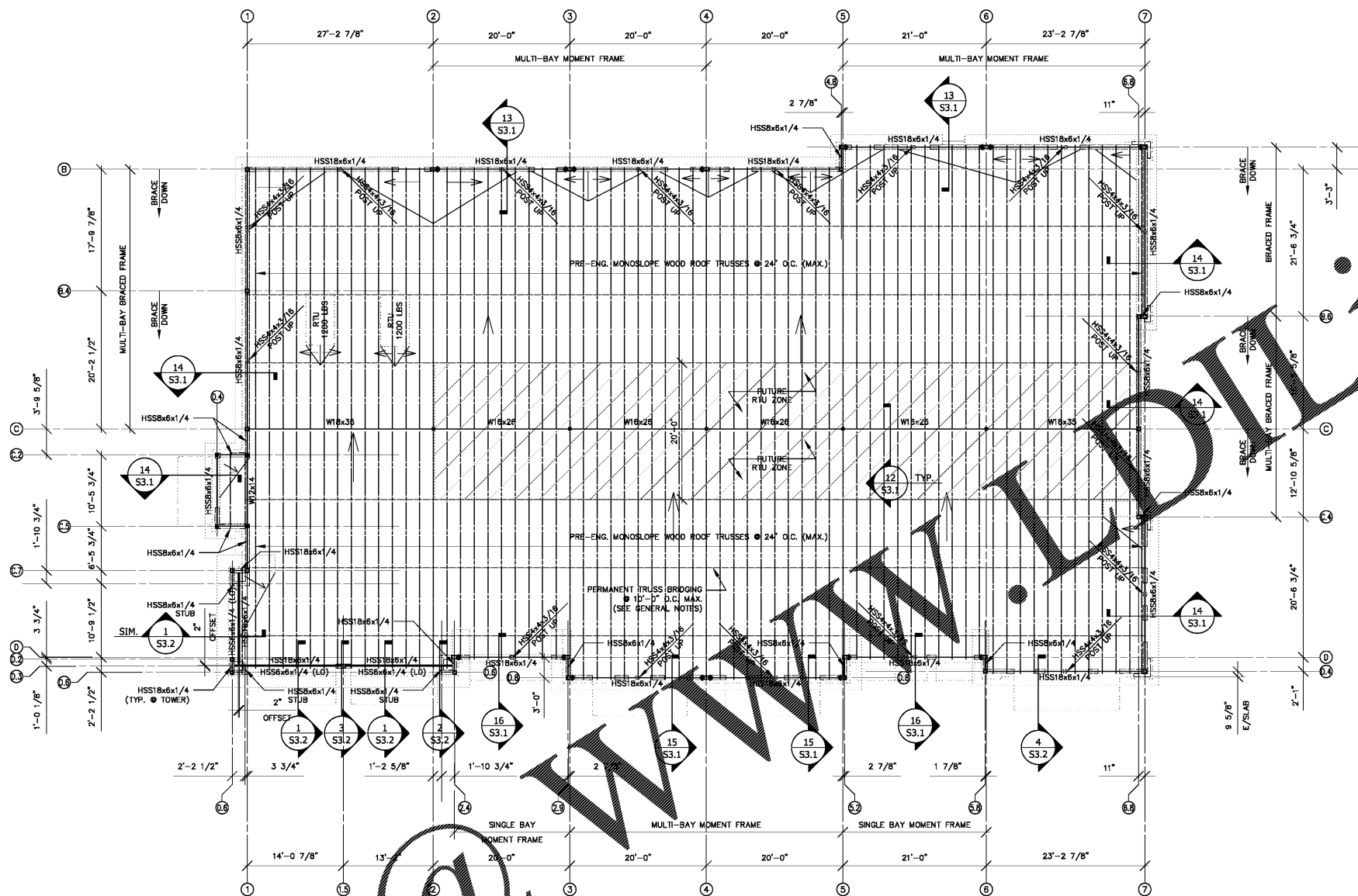
ISSUE RECORD  
NO. DATE REVISION

ISSUE RECORD  
NO. DATE REVISION

ISSUE RECORD  
NO. DATE REVISION

ISSUE RECORD  
NO. DATE REVISION

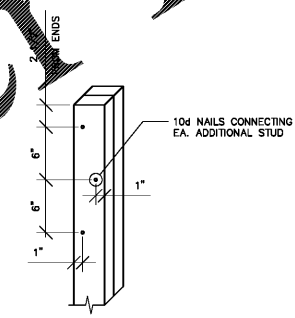
ISSUE RECORD  
NO. DATE REVISION



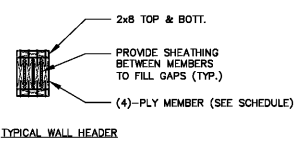
### ROOF FRAMING PLAN

SCALE: 1/8" = 1'-0"

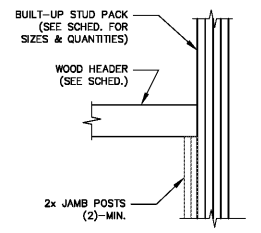
- PLAN NOTES**
- T.B.E. DENOTES TRUSS BEARING ELEVATION RELATIVE TO REFERENCE FINISHED FLOOR ELEVATION = 0'-0". SEE ARCH. DRAWINGS FOR ANY ELEVATIONS NOT SHOWN.  
T.B.E. = (+) 14'-0", U.N.O.
  - T./STL. B./STL. DENOTES TOP OF STEEL & BOTTOM OF STEEL BEARING ELEVATION RELATIVE TO REFERENCE FINISHED FLOOR ELEVATION = 0'-0". SEE ARCH. DRAWINGS FOR ANY ELEVATIONS NOT SHOWN.  
T./STL. FOR TRUSS BEARING = (+) 13'-9", U.N.O.  
T./STL. PARALLEL TO TRUSS = SLOPES (SEE 14/S3.1 FOR STEEL LOCATION RELATIVE TO TOP OF TRUSS).
  - DENOTES FULLY RESTRAINED MOMENT CONNECTION. SEE GEN. NOTES FOR CONNECTION REQUIREMENTS.
  - PROVIDE UNTEL & HEADERS OVER ALL OPENINGS. SEE TYPICAL HEADER DETAILS ON S2.1. SEE ARCHITECTURAL DRAWINGS FOR EXACT OPENING LOCATIONS & SIZES.
  - "SP(x)" DENOTES STUD PACK REQUIREMENTS AT THE ENDS OF OPENINGS. SEE S2.1 FOR STUD PACK DETAILS & REQUIREMENTS.
  - TRUSS MFR. TO DESIGN FOR ALL MECHANICAL LOADS. COORDINATE LOADS AND LOCATIONS WITH MECHANICAL DWGS.
  - TRUSS LAYOUT IS APPROXIMATE. TRUSS DESIGNER SHALL COORDINATE TRUSS LAYOUT WITH ARCH. & MECH. DRAWINGS TO AVOID ANY INTERFERENCE.
  - /// DENOTES HIGHER LOADING ZONE FOR FUTURE RTU. TRUSS DESIGNER TO DESIGN TRUSS AREA IN THIS ZONE FOR AN ADDITIONAL 50 PSF OVER ENTIRE AREA OR A 1500 LB CONCENTRATED LOCATED ANYWHERE WITHIN THE ZONE.
  - ALL HSS ROOF MEMBERS SHALL BE ORIENTED WITH THE LONG SIDE VERTICAL (LSV), U.N.O.



TYPICAL NAILING SCHEDULE FOR BUILT-UP MEMBERS



TYPICAL HEADER DETAIL



TYPICAL STUD PACK/JAMB DETAILS

HEADER SCHEDULE		
MAX. CLEAR OPENING	HEADER SIZE & QUANTITY	STUD PACKS EA. END
4'-0"	(4)-2x4	(2)-2x8
6'-0"	(4)-2x6	(3)-2x8
8'-0"	(4)-2x8	(4)-2x8

- NOTES**
- PROVIDE HEADERS ABOVE ALL OPENINGS.
  - FASTEN MULTIPLE MEMBERS TOGETHER PER BUILT UP MEMBER DETAIL.
  - FILL ALL GAPS OR VOIDS BETWEEN MEMBERS WITH PLYWOOD SHEATHING.
  - SEE TYPICAL NAILING SCHEDULE FOR BUILT UP MEMBERS FOR STUD PACK FASTENING.



GW Design Group, LLC  
(770) 457-0065

CREEKSIDE RETAIL  
1211 FRIENDSHIP RD.  
BRABELTON, GA

DANARDO ARCHITECTS, P.C.  
3675 CRESTWOOD PARKWAY  
SUITE 520  
DULUTH, GA 30096-1031

date 01/28/18  
drawn STS  
checked TG  
proj# 1806

ROOF FRAMING PLAN

S2.1

Order Plans