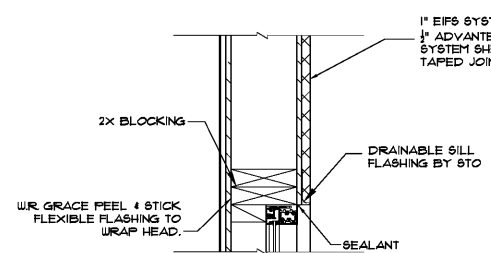
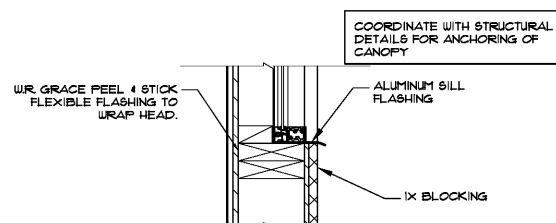


1 PARAPET DETAIL
1/2" x 1'-0"

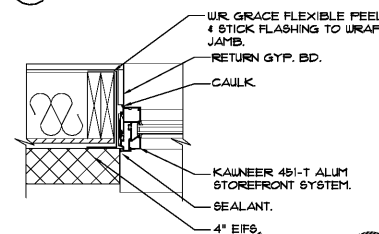
COORDINATE WITH STRUCTURAL DETAILS FOR FRAMING OF PARAPETS



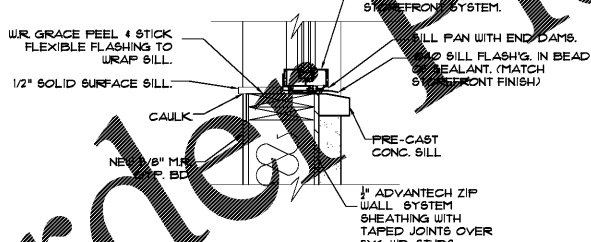
2 HEAD DETAIL
NTS



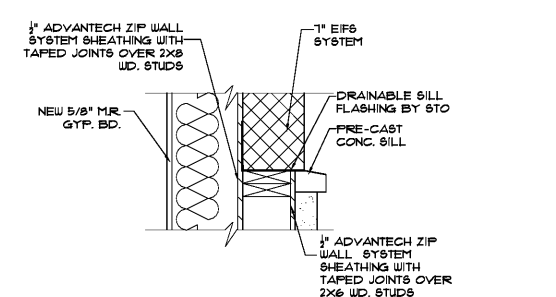
3 SILL DETAIL
NTS



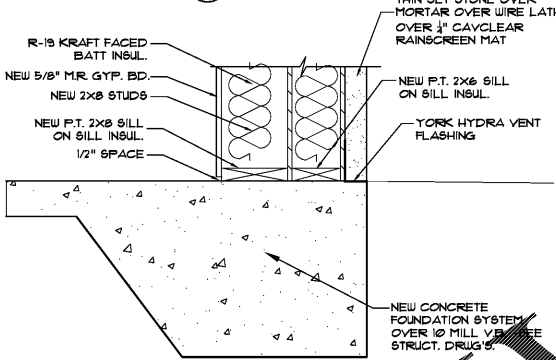
4 JAMB DETAIL
1/2" x 1'-0"



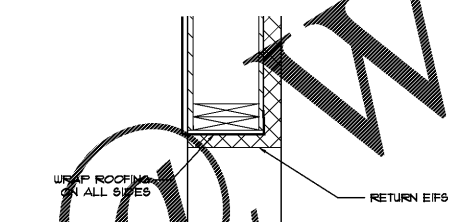
5 DETAIL
1/2" x 1'-0"



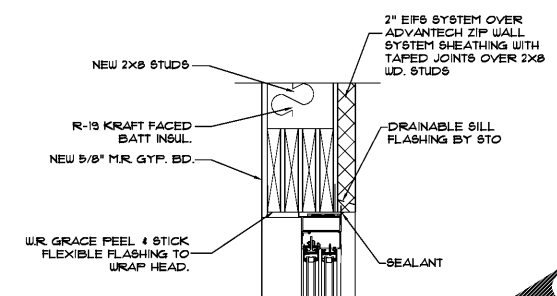
6 DETAIL
1/2" x 1'-0"



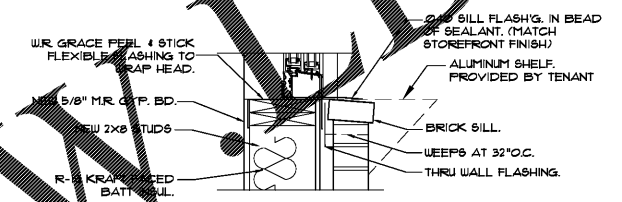
7 FOOTING DETAIL
1/2" x 1'-0"



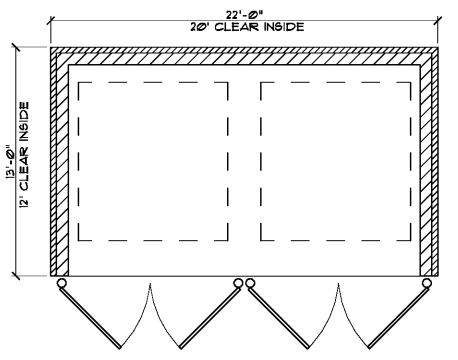
8 DETAIL
1/2" x 1'-0"



9 DRIVE THRU HEAD DETAIL
1/2" x 1'-0"

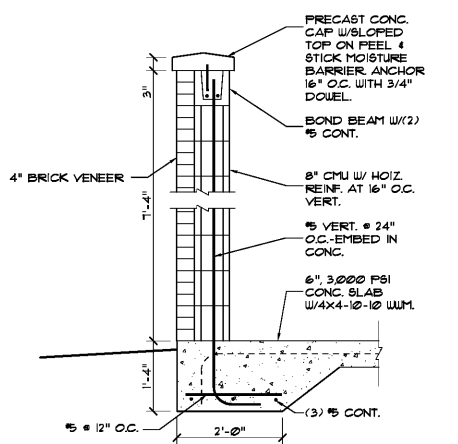


10 DRIVE THRU SILL DETAIL
1/2" x 1'-0"



11 DUMPSTER ENCLOSURE PLAN & TYP. ELEV.
1/4" = 1'-0"

NOTE: ENCLOSURE DOORS, HARDWARE 4 POSTS BY "CORVIT" OR EQUAL. STEEL POSTS, DECORATIVE ROUND CAP, ADJUSTABLE HINGES WITH GREASE FITTINGS. GATES TO HAVE SIMULATED PVC WOOD VERTICAL SLATS IN ALUM. FRAME WITH DROP PINS AND HANDLES. WWW.CORVIT.COM



12 DUMPSTER ENCLOSURE WALL
3/4" = 1'-0"



ISSUE RECORD
no. date
revision date

no.	date	revision	date

CREEKSIDE RETAIL
1211 FRIENDSHIP RD.
BRASELTON, GA

ANARDO ARCHITECTS, P.C.
3675 CRESTWOOD PARKWAY
DULUTH, GA 30096
770.806.1031

date 01/28/18
drawn NT
checked SZ
proj# 2018-01

WALL DETAILS 4
DUMPSTER DTL

A5.2