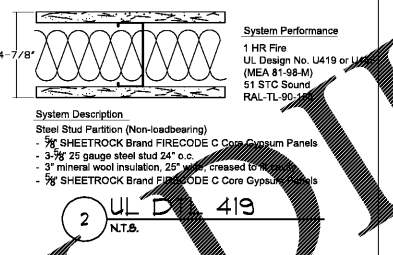


GENERAL PLAN NOTES:

- TENANT TO PROVIDE "KNOXBOX" AT ENTRANCE DOOR
- FOUR 4" THICK 3000 PSI WITH VAPOR LOCK 2020 ADDITIVE, CONCRETE SLAB OVER 10 MIL VAPOR BARRIER, OVER COMPACTED SOIL. AFTER ALL UNDERLAB UTILITIES ARE IN PLACE, CONCRETE TO BE TESTED TO VERIFY MOISTURE LEVEL.

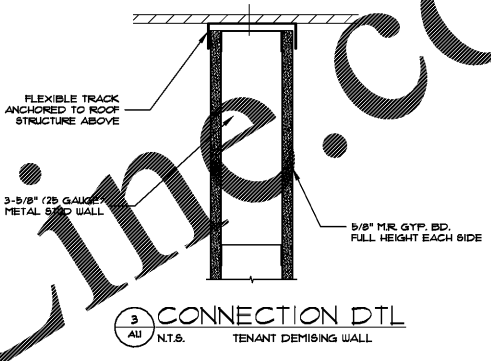
WALL LEGEND

- NEW EXTERIOR WALL - 1" 2" 3" 4" EPS SYSTEM. SEE WALL SECTIONS FOR CONSTRUCTION.
- NEW EXTERIOR WALL - 4" BRICK VENEER. SEE WALL SECTIONS FOR CONSTRUCTION.
- NEW EXTERIOR STONE VENEER. SEE WALL SECTIONS FOR CONSTRUCTION.
- NEW 1-HR FIRE RATED INTERIOR NON-LOAD BEARING PARTITION - 3/8" METAL STUDS AT 24" O.C. WITH 5/8" GYP. BD. ON EACH SIDE, FULL HEIGHT - SEE UL DETAIL 2/AU & DTL 3/AU FOR WALL CONNECTION.
- NEW DOOR AND MARK - SEE DOOR AND HARDWARE SCHEDULE.
- NEW WINDOW AND MARK - SEE WINDOW SCHEDULE.
- INDICATE 3" BOUND BATT INSULATION IN WALL.
- PROVIDE WALL HANG FIRE EXTINGUISHER 2A10BC POINTED AT HEIGHT AS REQUIRED BY AHJ, BUT NOT TO EXCEED 4' AFF PER ADA.



INSULATION NOTES

| PRODUCT | R VALUE | SMOKE DEVELOPED |
|---|---------|-----------------|
| CEILING CORNER SOUND ATTENUATION MATTS FIBER GLASS INSULATION | 10 | 10 |

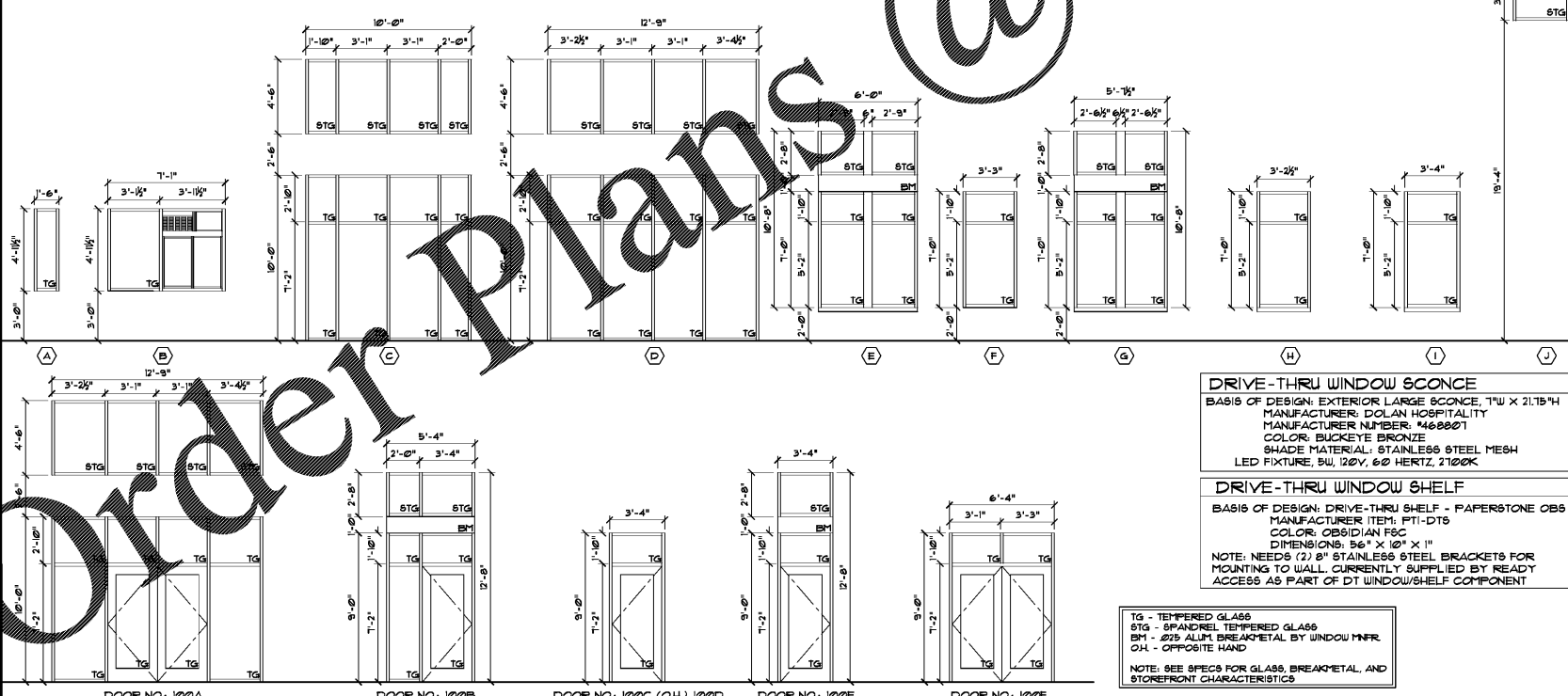


BUILDING PROTECTED BY A NEW AUTOMATIC FIRE PROTECTION SPRINKLER SYSTEM PER NFPA-13. SPRINKLER CONTRACTOR TO SUBMIT ENGINEERED SHOP DRAWINGS AND CALCS. TO THE BUILDING/FIRE DEPARTMENT FOR APPROVAL.

DOOR AND FRAME SCHEDULE

| MARK | SIZE | THK | TYPE | LABEL | MATERIAL | FINISH | MATERIAL | FINISH | COMMENTS |
|------|-----------------|--------|------|-------|------------|---------|----------|---------|----------|
| 100A | 72 3/4" X 1'-0" | 1-3/4" | D1 | -- | ALUM/GLASS | PRE-FIN | ALUM | PRE-FIN | |
| 100B | 3'-0" X 1'-0" | 1-3/4" | D2 | -- | ALUM/GLASS | PRE-FIN | ALUM | PRE-FIN | |
| 100C | 3'-0" X 1'-0" | 1-3/4" | D2 | -- | ALUM/GLASS | PRE-FIN | ALUM | PRE-FIN | |
| 100D | 3'-0" X 1'-0" | 1-3/4" | D2 | -- | ALUM/GLASS | PRE-FIN | ALUM | PRE-FIN | |
| 100E | 3'-0" X 1'-0" | 1-3/4" | D2 | -- | ALUM/GLASS | PRE-FIN | ALUM | PRE-FIN | |
| 100F | 72 3/4" X 1'-0" | 1-3/4" | D1 | -- | ALUM/GLASS | PRE-FIN | ALUM | PRE-FIN | |
| 100G | 3'-0" X 1'-0" | 1-3/4" | D3 | -- | INSUL HM | PAINT | HM | PAINT | |
| 100H | 3'-0" X 1'-0" | 1-3/4" | D3 | -- | INSUL HM | PAINT | HM | PAINT | |
| 100J | 3'-0" X 1'-0" | 1-3/4" | D3 | -- | INSUL HM | PAINT | HM | PAINT | |
| 100K | 3'-0" X 1'-0" | 1-3/4" | D3 | -- | INSUL HM | PAINT | HM | PAINT | |
| 100L | 3'-0" X 1'-0" | 1-3/4" | D3 | -- | INSUL HM | PAINT | HM | PAINT | |
| 100M | 3'-0" X 1'-0" | 1-3/4" | D3 | -- | INSUL HM | PAINT | HM | PAINT | |
| 100N | 4'-0" X 1'-0" | 1-3/4" | D3 | -- | INSUL HM | PAINT | HM | PAINT | |
| 100A | 3'-0" X 1'-0" | 1-3/4" | D3 | -- | INSUL HM | PAINT | HM | PAINT | |

WINDOW & DOOR ELEVATIONS



GENERAL DOOR NOTES

- ALL DOOR HARDWARE TO BE LEVER-TYPE 4 ADA-COMPLIANT AND MEET GA ACCESSIBILITY CODES-REFER TO SPECIFICATIONS FOR INFORMATION AND HARDWARE SCHEDULE.
- EXIT DOORS SHALL NOT BE SUBJECT TO THE USE OF A KEY OR REQUIRE SPECIAL KNOWLEDGE TO OPERATE, NFPA 101 LIFE-SAFETY CODE, CHAPTER 1, SEC. 12.13.1, 2009 EDITION.
- ALL GLASS DOOR & SIDELIGHTS SHALL BE TEMPERED GLASS.
- DOOR HARDWARE TO BE KAINEER MANUFACTURERS STANDARD; INCLUDE PUSH/PULL, CLOSERS, DEAD BOLT, AND WEATHER STRIPPING. DOUBLE DOORS TO HAVE (2) ACTIVE LEAFS.
- HM DOOR HARDWARE TO BE MANUFACTURERS STANDARD; INCLUDE MORTISE LOCKSET ENTRY TYPE, RETRACT LATCH & D.B. IN ONE ACTION, WEATHER STRIPPING, CLOSER, AND PEEP HOLE VISION INSTALLED AT ADA HEIGHT.
- DOORS TO REMAIN UNLOCKED DURING BUSINESS HOURS.

GLASS TYPE SCHEDULE

| WINDOW TYPE | DESCRIPTION |
|--------------------------------------|---|
| ABCDEF, G, H, J | LOW E* COATED, CLEAR INSULATING GLASS. 1. OVERALL UNIT THICKNESS: 1" (25 MM). 2. THICKNESS OF EACH GLASS LITE: 1/4" (6.0 MM). 3. EXTERIOR LITE: CLEAR HEAT STRENGTHENED FLOAT GLASS, OR FULLY TEMPERED FLOAT GLASS AS INDICATED. 4. INTERSPACE CONTENT: AIR. 5. INDOOR LITE: CLEAR HEAT STRENGTHENED FLOAT GLASS OR FULLY TEMPERED FLOAT GLASS AS INDICATED. 6. LOW-E COATING: ENERGY SELECT 40 CLEAR SPATTERED ON SECOND SURFACE. 7. VISIBLE LIGHT TRANSMISSION: 69 PER CENT MAXIMUM. 8. WINTER NIGHTTIME U-FACTOR: 29 MAXIMUM. 9. SUMMER DAYTIME U-FACTOR: 28 MAXIMUM. 10. SOLAR HEAT GAIN COEFFICIENT: 39 MAXIMUM. 11. PROVIDE SAFETY GLASS LABELING AS REQUIRED. |
| TRANSOM & SIDELITE (DOOR FS) | |
| 101A/101B/102A, 102B/102C/102D, 102E | |
| WINDOW TYPE | DESCRIPTION |
| | SPANDREL GLASS. 1. OVERALL UNIT THICKNESS: 1/4" (6 MM). 2. LITE: SPANDREL, TEMPERED GLASS A. TINT: OPACI-COAT 300, 93-0110 WARM GRAY. B. COATING LOCATION: SECOND SURFACE |
| DOOR GLASS | DESCRIPTION |
| 101A/101B/102A, 102B/102C/102D, 102E | CLEAR TEMPERED 1. OVERALL UNIT THICKNESS: 3/4" (6 MM). 2. LITE: CLEAR, TEMPERED GLASS (REFERENCE GLASS SPEC ABOVE) |

WINDOW & DOOR SPECIFICATIONS

- WINDOW FRAMING SYSTEM TO BE EQUAL TO KAINEER TRI-FAB 451-THERMAL BROKEN SYSTEM, FINISH TO BE PERMAFLUOR ARCHITECTURAL COATING - 10% PVDF, COLOR: DARK BRONZE
- DOORS TO BE BY KAINEER 350, 3/4" INSUL. GLASS, MEDIUM STILE, ADA BOTTOM STILE, FINISH TO BE PERMAFLUOR ARCHITECTURAL COATING - 10% PVDF, COLOR: DARK BRONZE
3. PARAPET WINDOWS TO BE EQUAL TO KAINEER ENCORE, SINGLE GLAZING, 1/4" INFL, FINISH TO BE PERMAFLUOR ARCHITECTURAL COATING - 10% PVDF, COLOR: DARK BRONZE
- GLASS BASIS OF DESIGN TO BE BY AGC.
A. CLEAR FLOAT GLASS: ASTM 1036, TYPE I, QUALITY-G3, CLASS 1 CLEAR, UNLESS OTHERWISE INDICATED.
B. SPATTERED GLASS COATED LOW-E EMISSION VISION GLASS: ASTM C 1316 COATED BY SPATTERED PROCESS, ASTM C 1036, TYPE I, QUALITY G-3, CLASS 1 (CLEAR) UNLESS OTHERWISE INDICATED.
C. UNCOATED FLOAT GLASS: CLASS 2, CLEAR INSULATING GLASS
MANUFACTURER: AGC GLASS COMPANY NORTH AMERICA.
INSULATING GLASS UNITS: FACTORY ASSEMBLED UNITS CONSISTING OF SEALED LITES OF GLASS SEPARATED BY A DEHYDRATED INTERSPACE PER ASTM E 2180.
GLAZING GASKETS:
DENSE COMPRESSION GASKETS: MOLDED OR EXTRUDED GASKETS AND HARNESS REQUIRED TO MAINTAIN WATERTIGHT SEAL, MADE FROM ONE OF THE FOLLOWING:
1. NOPRENE COMPLYING TO ASTM C 864.
2. EPDM COMPLYING WITH ASTM C 864.
3. SILICONE COMPLYING WITH ASTM C 115.
4. THERMOPLASTIC POLYURETHAN COMPLYING WITH ASTM C 115.
SOFT COMPRESSION GASKETS:
EXTRUDED OR MOLDED, CLOSED CELL, INTEGRAL SKIMMED NEOPRENE, EPDM, OR SILICONE, GASKETS COMPLYING WITH ASTM C 869, TYPE II, BLACK, OF PROFILE AND HARNESS REQUIRED TO MAINTAIN WATERTIGHT SEAL.

ANARDO ARCHITECTS, P.C.
3675 CRESTWOOD PARKWAY, SUITE 220
DUBLIN, VA 22024
PHONE: 703.896.1031

DATE: 01/28/18
DRAWN: NT
CHECKED: SZ
PROJECT: 2018-01

FLOOR PLAN

15816 RECORD ISSUE DATE: 5/2/18 FOR CONSTRUCTION

DRAWING REVISION

NO. DATE REVISION

CREEKSIDE RETAIL
1211 FRIENDSHIP RD.
BRASELTON, GA