



PARTNERS in Architecture, PLC

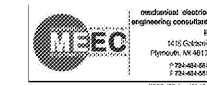
65 MARKET STREET
MOUNT CLEMENS, MI 48043
P 586.493.3000
F 586.493.3057

Statement of Intellectual Property

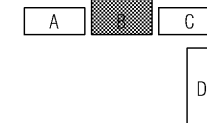
The ideas, concepts, drawings and thoughts conveyed herein are the intellectual property of PARTNERS in Architecture, PLC, 65 Market Street, Mount Clemens, MI 48043 (P 586.493.3000). This set of drawings, in whole or in part, may not be reproduced, without the written consent of PARTNERS in Architecture, PLC. This information is protected under U.S. Copyright Law, all rights reserved.

© Copyright 2016

CONSULTANT



KEY PLAN



OWNER

Suwanee Grocery, LLC

8110 N. Saint Louis Avenue
Skokie, IL 60076

PROJECT NAME

Suwanee Grocery, LLC
Building-B Build-Out

3230 Caliber Street
Suwanee, GA 30024

PROJECT NO.

16-177

ISSUES / REVISIONS

Bidding - Construction 04/30/18

DRAWN BY

WV

CHECKED BY

WV

APPROVED BY

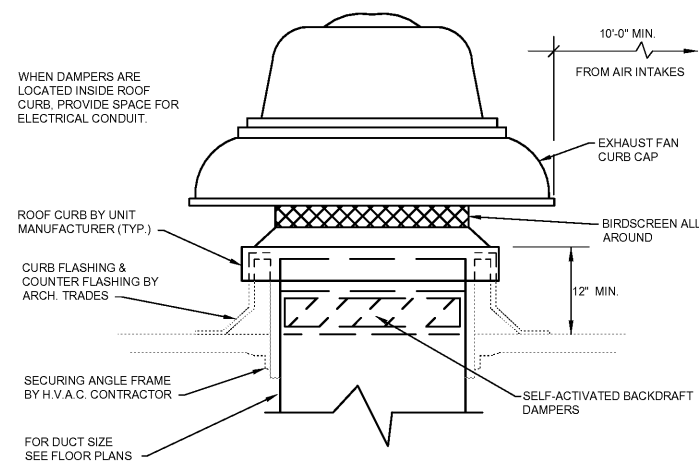
JB

SHEET NAME

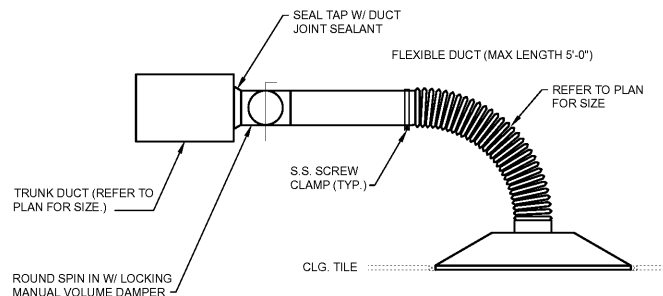
HVAC - DETAILS

SHEET NO.

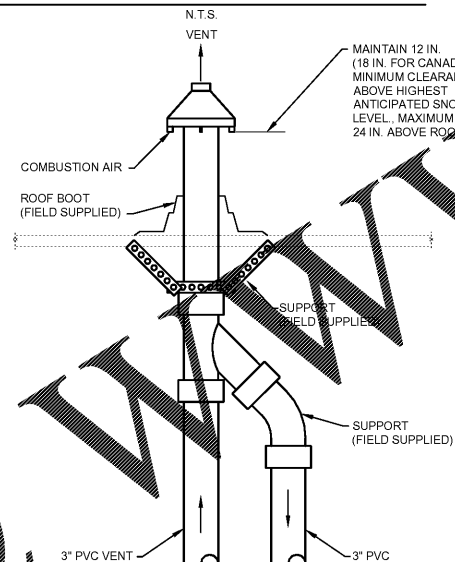
M3-01



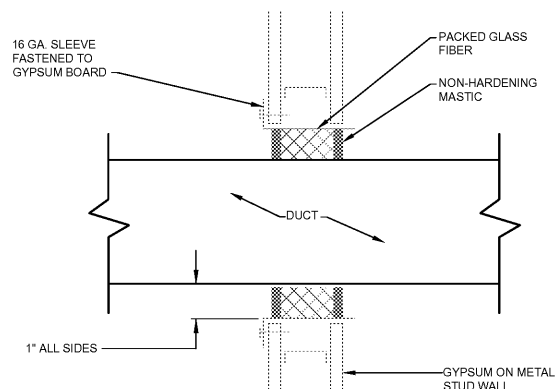
EXHAUST FAN DETAIL
N.T.S.



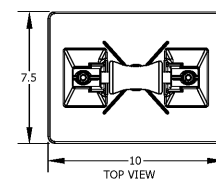
SPIN-IN AND CEILING DIFFUSER DETAIL



CONCENTRIC VENT ROOF DETAIL
N.T.S.



DUCT SEAL AT NON RATED WALLS
N.T.S.



MIRO MODEL: 3-RAH-7

KEY INFORMATION
 - 3" ID maximum pipe capacity 3-3/4" OD maximum.
 - Adjustable in height from 3-3/4" to 7", even load required, maximum load is 115 lbs.
 - Recommended spacing is not to exceed 10 feet centers depending upon the load. Make certain each pipestand is properly elevated to even load weight at all pipestands.
 - Base Material: Polycarbonate
 - Axle, Roller and Collar material: Polycarbonate
 - All metal parts are stainless steel

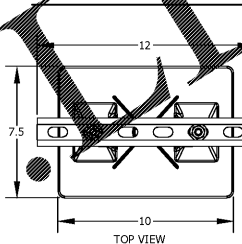
ACCESSORIES

- 3-RAH Pipe Strap - Order to Pipe O.D.
 - Support pad or deck plate
 - Eternabond: 2-sided tape

PRODUCT DESCRIPTION

A "roller-bearing" pipe support used to support roof-mounted gas pipes and other mechanical piping. The design allows for thermal expansion and contraction without preventing damage to the roof membrane. Pipes rest on a lubricated polycarbonate resin coated roller.

3/4" - 3"Ø GAS PIPE - ROOF SUPPORT DETAIL



MIRO MODEL: 2.5 CONDUIT SUPPORT - 5

KEY INFORMATION
 - Adjustable height from 3-1/2" to 5", even load required, maximum load is 115 lbs.
 - Recommended spacing is not to exceed 10 feet centers depending upon the load. Make certain each stand is properly elevated to even load weight at all stands.
 - Base Material: Polycarbonate
 - All metal parts are either stainless steel or hot-dip galvanized.

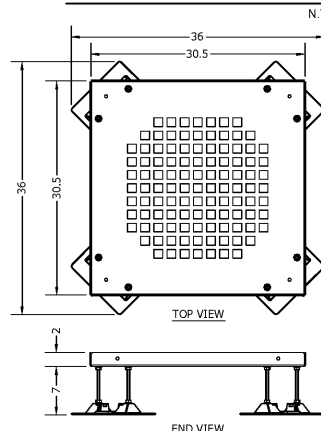
ACCESSORIES

- Pipe Clamp/Strap - Order to Pipe O.D.
 - Support pad or deck plate
 - Eternabond: 2-sided tape

PRODUCT DESCRIPTION

A pipe support with "strut" used to support roof-mounted gas pipes and other mechanical piping. Pipes rest on a 12" length of strut which is mounted on the base. The pipes can be fastened by using the appropriate pipe clamp.

REFRIGERANT PIPE - ROOF SUPPORT DETAIL



ACCESSORIES

- 7-1/2 x 10 Support pad
 - Eternabond: 2-sided tape

PRODUCT DESCRIPTION

The MIRO LD-Mechanical Supports are design to elevate rooftop mechanical units, cabinets and other devices. The LD-Mechanical Supports pan is designed with slots to allow proper ventilation as well as moisture drainage away from the unit. The supports are adjustable in height per the drawing.

KEY INFORMATION

- Designed to support mechanical units, cabinets and other devices.
 - Adjustable height up to 7", even load required, maximum load is 200 lbs.
 - Custom sizes available
 - Base Material: Polycarbonate
 - All metal parts are either stainless steel, hot-dip galvanized or pre-galvanized.

CONDENSING UNIT - ROOF SUPPORT DETAIL

N.T.S.

Order Plans @ WWWW