



PARTNERS in Architecture, PLC

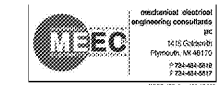
65 MARKET STREET
MOUNT CLEMENS, MI 48043
P 586.459.3000
F 586.459.3057

Statement of Intellectual Property

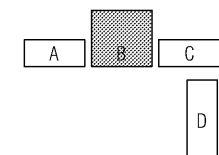
The ideas, concepts, drawings and thoughts conveyed herein are the intellectual property of PARTNERS in Architecture, PLC, 65 Market Street, Mount Clemens, MI 48043 (P 586.459.3000). This set of drawings, in whole or in part, may not be reproduced, without the written consent of PARTNERS in Architecture, PLC. This information is protected under U.S. Copyright Law, all rights reserved.

© Copyright 2016

CONSULTANT



KEY PLAN



OWNER

Suwanee Grocery, LLC

8110 N. Saint Louis Avenue
Skokie, IL 60076

PROJECT NAME

Suwanee Grocery, LLC
Building-B Build-Out

3230 Caliber Street
Suwanee, GA 30024

PROJECT NO.

16-177

ISSUES / REVISIONS

Bidding - Construction 04/30/18

DRAWN BY

WEV

CHECKED BY

WEV

APPROVED BY

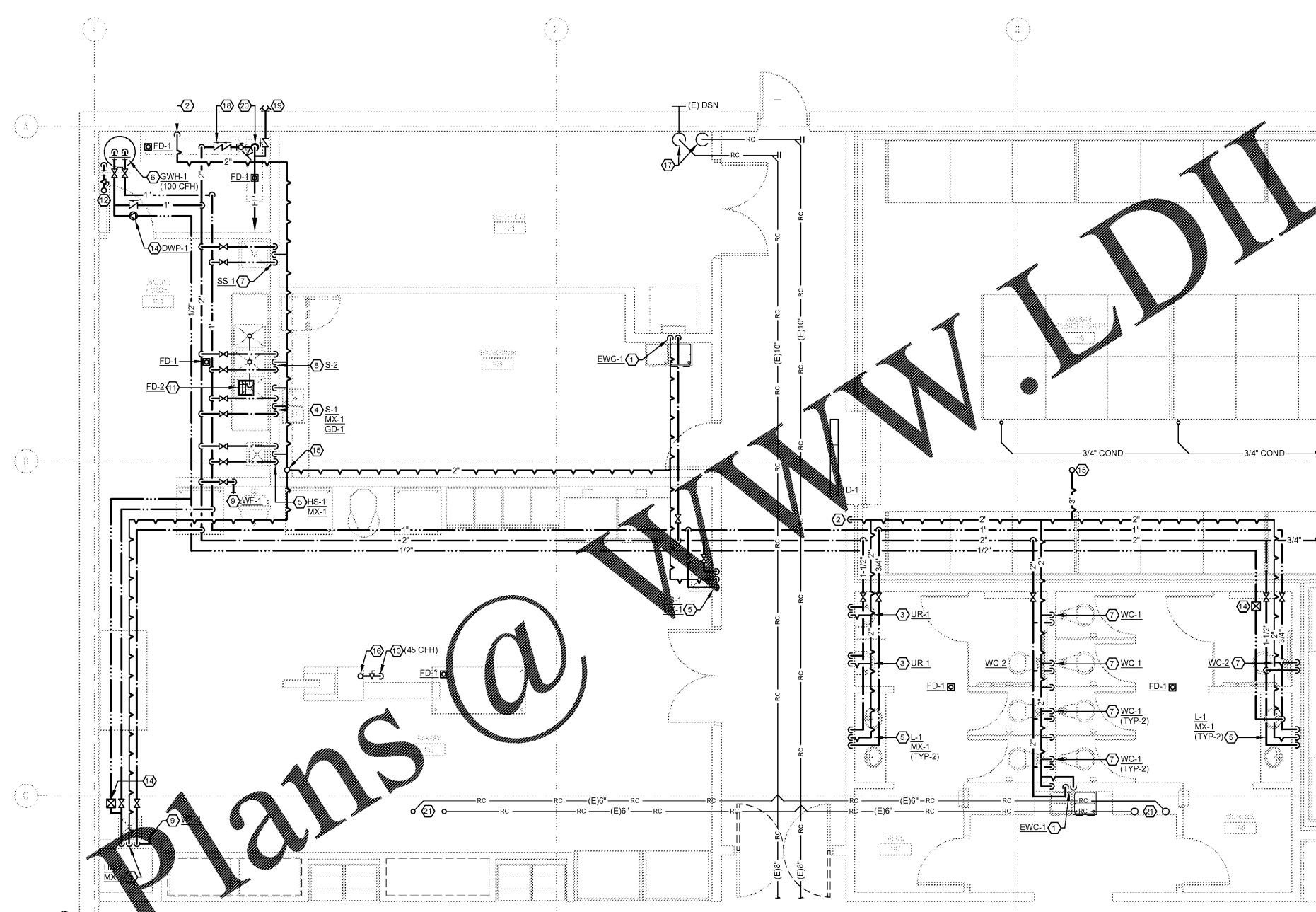
JFB

SHEET NAME

ENLARGED
ABOVEGROUND -
PLUMBING PLAN

SHEET NO.

P2-01



KEY TO NOTES

1. 1/2" COLD WATER & 1-1/2" SANITARY VENT DOWN TO ELECTRICAL WATER COOLER.
2. SANITARY VENT DOWN. REFER TO DRAWING P1-01 FOR CONTINUATION.
3. 3/4" COLD WATER AND 1-1/2" VENT DOWN TO WALL MOUNTED URINAL WITH 2" SANITARY DOWN TO UNDERGROUND.
4. 1/2" HOT AND COLD WATER & 1-1/2" VENT DOWN TO LAVATORY / SINK. PROVIDE THERMOSTATIC MIXING VALVE AND ADA PIPE COVERS UNDER LAVATORY / SINK.
5. 1/2" HOT AND COLD WATER & 1-1/2" SANITARY VENT DOWN TO SERVICE SINK FAUCET.
6. 1" HOT AND COLD WATER & 1" NATURAL GAS DOWN TO GAS FIRED WATER HEATER. REFER TO DETAIL ON DRAWING P4-01.
7. 1" COLD WATER DOWN TO WATER CLOSET FLUSH VALVE & 2" SANITARY VENT DOWN TO UNDERGROUND.
8. 3/4" HOT AND COLD WATER DOWN TO 3-COMPARTMENT SINK FAUCET.
9. 1/2" COLD WATER TO WALL FAUCET. COORDINATE FINAL LOCATION AND HEIGHT ABOVE FLOOR WITH OWNER.
10. 3/4" NATURAL GAS DOWN TO TORTILLA OVEN.
11. FLOOR SINK. ROUTE 3-COMPARTMENT SINK DRAINS TO SPILL WITH AIR GAP.
12. 1" NATURAL GAS UP THROUGH ROOF. REFER TO DRAWING M2-01 FOR CONTINUATION.
13. DOMESTIC HOT WATER RETURN PUMP. REFER TO DETAILS ON DRAWING P3-01.
14. HOT WATER BALANCE VALVE. BALANCE TO 1 GPM.
15. 3" SANITARY VENT THROUGH ROOF.
16. 3/4" NATURAL GAS UP THROUGH ROOF. REFER TO DRAWING M2-01 FOR CONTINUATION.
17. EXISTING 10" RAIN CONDUCTOR PIPING DOWN WALL.
18. 2" DOMESTIC WATER FROM SITE WATER METER TO REDUCED PRESSURE BACKFLOW PREVENTOR.
19. FIRE DEPARTMENT CONNECTION. FIRE PROTECTION CONTRACTOR SHALL COORDINATE FINAL LOCATION WITH AHJ PRIOR TO INSTALLATION.
20. FIRE PROTECTION RISER DESIGNED BY FIRE PROTECTION CONTRACTOR.
21. EXISTING RAIN CONDUCTOR AND OVERFLOW RAIN CONDUCTOR PIPING UP TO ROOF SUMP AND OVERFLOW ROOF SUMP ABOVE.

1 Enlarged Aboveground - Plumbing Plan
1/4" = 1'-0"

Order Plans @

WWW.LDILINE.COM