



PARTNERS in Architecture, PLC

65 MARKET STREET  
MOUNT CLEMENS, MI 48043  
P 586 499 3000  
F 586 499 3007

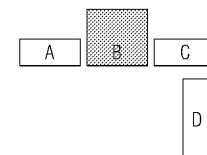
Michael A. Malone, Architect  
-Georgia Registration No. 18414895

Statement of Intellectual Property:  
The ideas, concepts, drawings and thoughts conveyed herein are the intellectual property of PARTNERS in Architecture, PLC, 65 Market Street, Mount Clemens, MI, 48043 (P: 586 499 3000). This set of drawings, in whole or in part, may not be reproduced, without the written consent of PARTNERS in Architecture, PLC. This information is protected under U.S. Copyright Law, all rights reserved.

© Copyright 2018

PROFESSIONAL SEAL

KEY PLAN



OWNER

Suwanee Grocery, LLC

8110 N. Saint Louis Avenue  
Skokie, IL 60076

PROJECT NAME

Suwanee Grocery, LLC  
Building-B Build-Out

3230 Caliber Street  
Suwanee, GA 30024

PROJECT NO.

16-177

ISSUES / REVISIONS

Bidding - Construction 05/01/18

DRAWN BY

JEE

CHECKED BY

FGM

APPROVED BY

MAM

SHEET NAME

ROOF PLAN

SHEET NO.

A3-02

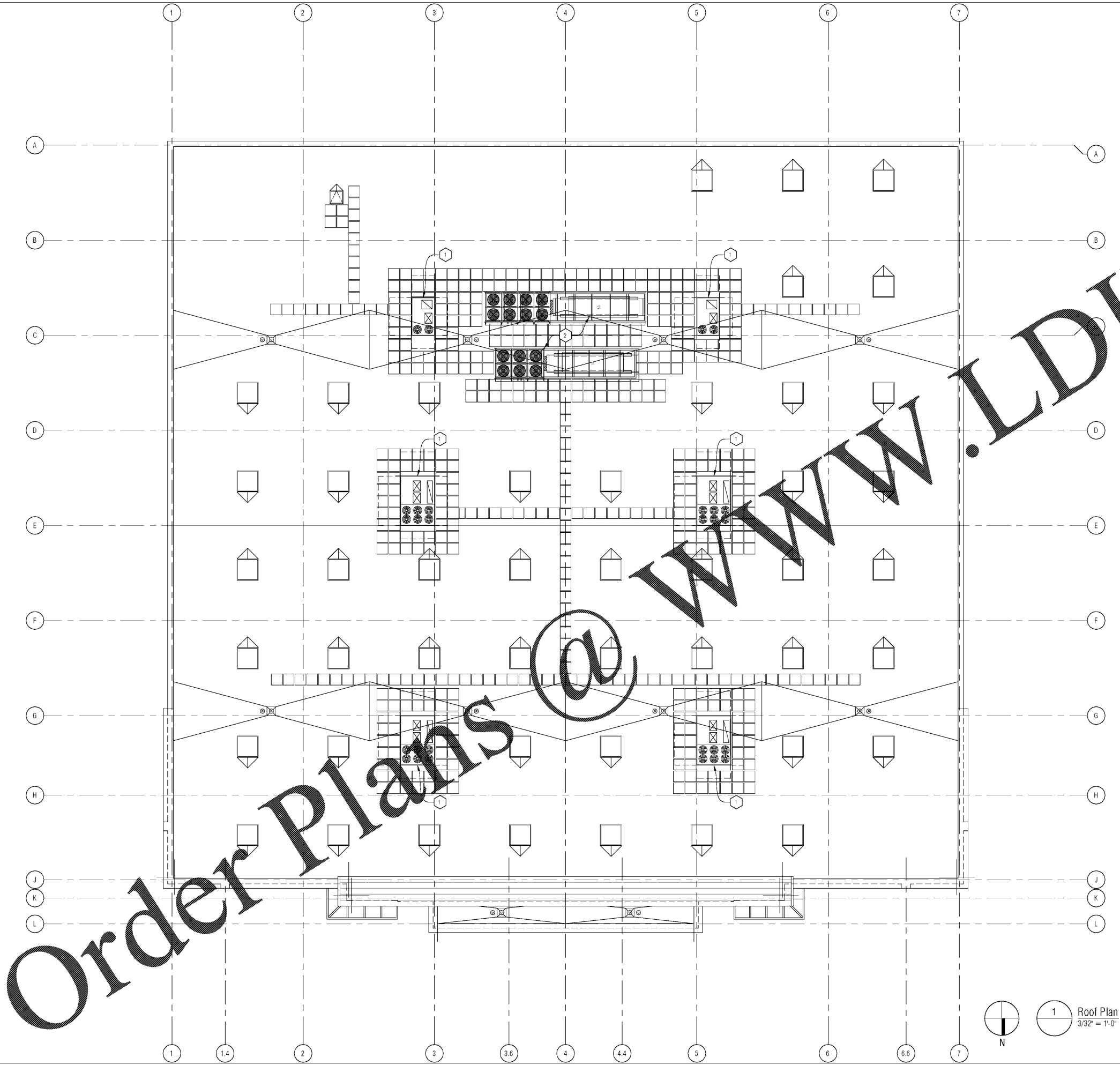
ROOF PLAN - GENERAL NOTES:

A. REFER TO MECHANICAL AND ELECTRICAL FOR ALL THRU ROOF PENETRATIONS. FLASH AND SEAL ALL PENETRATIONS IN ACCORDANCE WITH THE ROOF WARRANTY AND ROOF DETAILS.

ROOF PLAN - KEY NOTES:

1 ROOFTOP MECHANICAL UNIT. REFER TO MECH.

2 ROOFTOP REFRIGERATION EQUIPMENT STRUCTURE WALLAGE.



Order Plans @ www.LDILine.com



1 Roof Plan  
3/32" = 1'-0"