



PARTNERS in Architecture, PLC

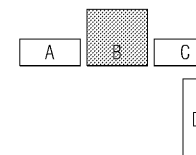
65 MARKET STREET  
MOUNT CLEMENS, MI 48043  
P 586 469 3000  
F 586 469 3007

Michael A. Malone, Architect  
- Georgia Registration No. 98474980

Statement of Intellectual Property:  
The basic concepts, drawings and thoughts conveyed herein are the intellectual property of PARTNERS in Architecture, PLC, 65 Market Street, Mount Clemens, MI, 48043 (P: 586 469 3000). This set of drawings, in whole or in part, may not be reproduced, without the written consent of PARTNERS in Architecture, PLC. This information is protected under U.S. Copyright Law, all rights reserved.  
© Copyright 2018

PROFESSIONAL SEAL

KEY PLAN



OWNER

Suwanee Grocery, LLC

8110 N. Saint Louis Avenue  
Skokie, IL 60076

PROJECT NAME

Suwanee Grocery, LLC  
Building-B Build-Out

3230 Caliber Street  
Suwanee, GA 30024

PROJECT NO.

16-177

ISSUES / REVISIONS

Bidding - Construction 05/01/18

DRAWN BY

JEE

CHECKED BY

FGM

APPROVED BY

MAM

SHEET NAME

FLOOR PLAN

SHEET NO.

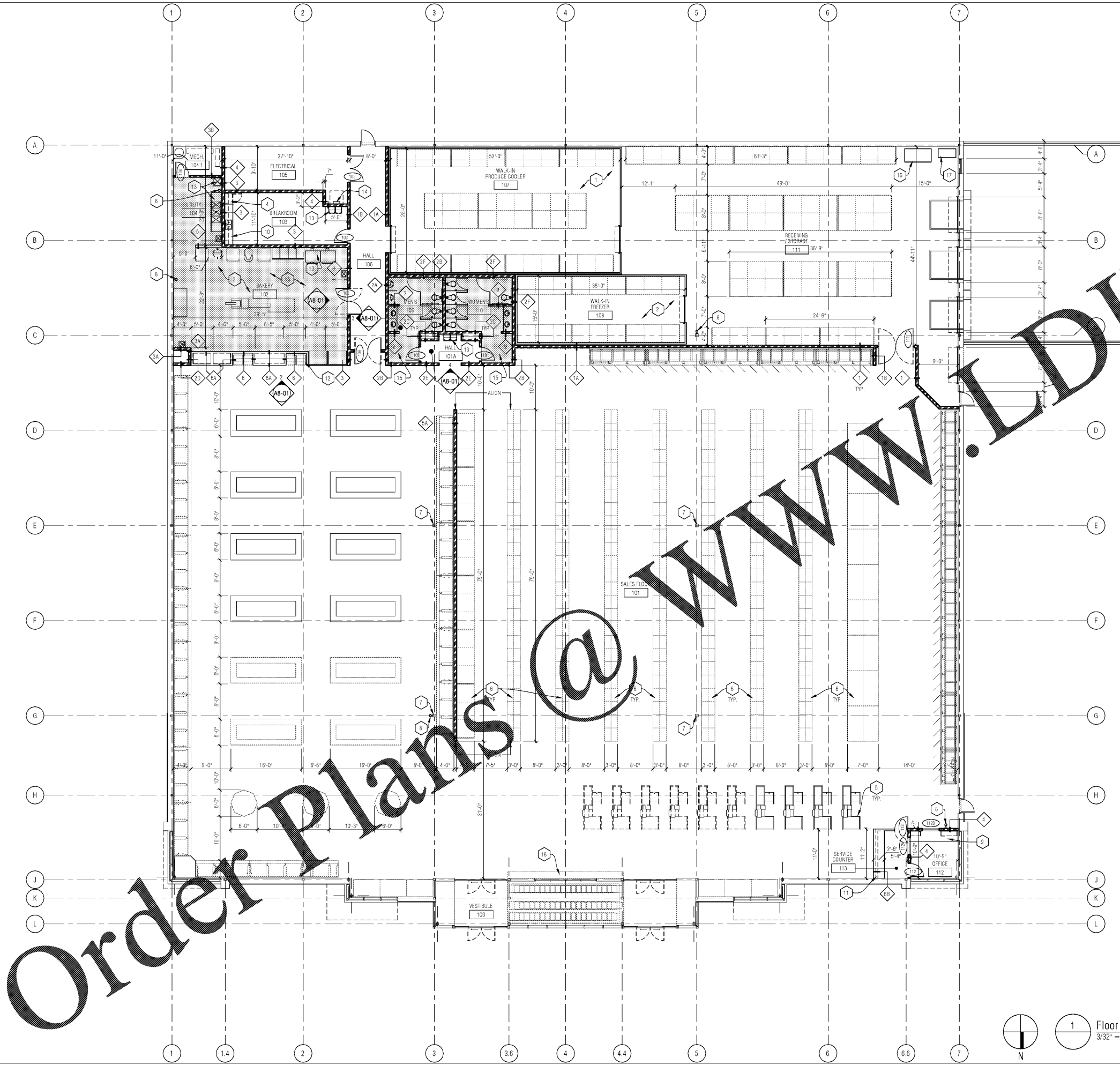
A3-01

FLOOR PLAN - GENERAL NOTES:

- A. ALL PLAN DIMENSIONS ARE NOMINAL TO FACE OF WALL. THICKNESS OF WALL IS SHOWN NOMINAL - SEE WALL TYPES FOR ACTUAL THICKNESS.
- B. COORDINATE SIZE AND LOCATION OF ALL DUCT, SHAFT AND LOUVER OPENINGS IN WALLS AND FLOORS WITH MECHANICAL AND ELECTRICAL. PROVIDE ALL REQUIRED UNTELS FOR OPENINGS.
- C. DO NOT SCALE DRAWINGS. USE DIMENSIONS PROVIDED. IF A CONFLICT IS ENCOUNTERED OR A REQUIRED DIMENSION IS NOT PROVIDED, REQUEST A CLARIFICATION FROM ARCHITECT.
- D. REFER TO DRAWING AD-01 FOR ABBREVIATIONS AND OTHER SYMBOL DEFINITIONS.

FLOOR PLAN - KEY NOTES:

- 1 WALK-IN COOLER - BY OWNERS REFRIGERATION VENDOR. COORDINATE MECH AND ELEC ROUGH-INS WITH OWNERS VENDOR.
- 2 WALK-IN FREEZER - BY OWNERS REFRIGERATION VENDOR. COORDINATE MECH AND ELEC ROUGH-INS WITH OWNERS VENDOR.
- 3 BAKERY EQUIPMENT - BY OWNERS VENDOR. COORDINATE MECH AND ELEC ROUGH-INS WITH OWNERS VENDOR.
- 4 REFRIGERATOR / FREEZER - COORDINATE REQUIREMENTS WITH OWNER.
- 5 CHECK-OUT COUNTER UNIT - BY OWNER.
- 6 MERCHANDISE STORAGE / DISPLAY UNIT - BY OWNER.
- 7 16 GA. STAINLESS STEEL COLUMN WRAP TO 4'-0" AFF.
- 8 PORTABLE FIRE EXTINGUISHER (SURFACE MOUNTED).
- 9 OFFICE CASEWORK:  
DESK TOP: 30" DEEP x 1-1/4" THICK PLASTIC LAMINATE DESK TOP WITH 3MM PVC EDGE WITH (2) GROMMETS ALONG BACK OF DESK TOP. MOUNT ON BRACKETS.  
WALL CABINETS: 14" DEEP PLAM WITH (2) ADJ. SHELVES.  
HARDWARE: 5-KNUCKLE STEEL HINGES, WIRE PULLS, MAGNETIC CATCHES - LOCKS AS DIRECTED BY OWNER.
- 10 BREAKROOM CASEWORK:  
COUNTERTOP: 34" HIGH BY 25" DEEP 1-1/4" THICK P.LAM WITH 3MM PVC EDGE AND 4" BACK SPLASH.  
BASE CABINETS: 24" DEEP PLAM WITH (1) ADJ. SHELF.  
WALL CABINETS: 14" DEEP PLAM WITH (2) ADJ. SHELVES.  
HARDWARE: 5-KNUCKLE STEEL HINGES, WIRE PULLS, MAGNETIC CATCHES - LOCKS AS DIRECTED BY OWNER.
- 11 SERVICE COUNTER:  
DESK TOP: 34" HIGH BY 30" DEEP x 1-1/4" THICK PLASTIC LAMINATE COUNTER WITH 3MM PVC EDGE WITH (2) GROMMETS ALONG BACK OF COUNTER. MOUNT ON BRACKETS.
- 12 BAKERY COUNTER:  
COUNTERTOP: 34" HIGH x 1-1/4" THICK GRANITE WALL CAP / COUNTER ON PARTIAL HEIGHT WALL.
- 13 PLUMBING FIXTURE - REFER TO MECH.
- 14 ROOF ACCESS LADDER - REFER TO DETAILS.
- 15 AREA OF DEPRESSED CONCRETE FLOOR SLAB TO ACHIEVE FLUSH TRANSITION TO ADJACENT EXPOSED CONCRETE FLOOR (SHADED AREA). SHADED AREA TO INDICATE DEPRESSED SLAB.
- 16 BAILER - COORDINATE REQUIREMENTS WITH OWNER.
- 17 GARBAGE DISPOSAL - COORDINATE REQUIREMENTS WITH OWNER.
- 18 FUTURE BENCH - PROVIDED BY OWNER.



Order Plans @ WWW.LDLine.com

