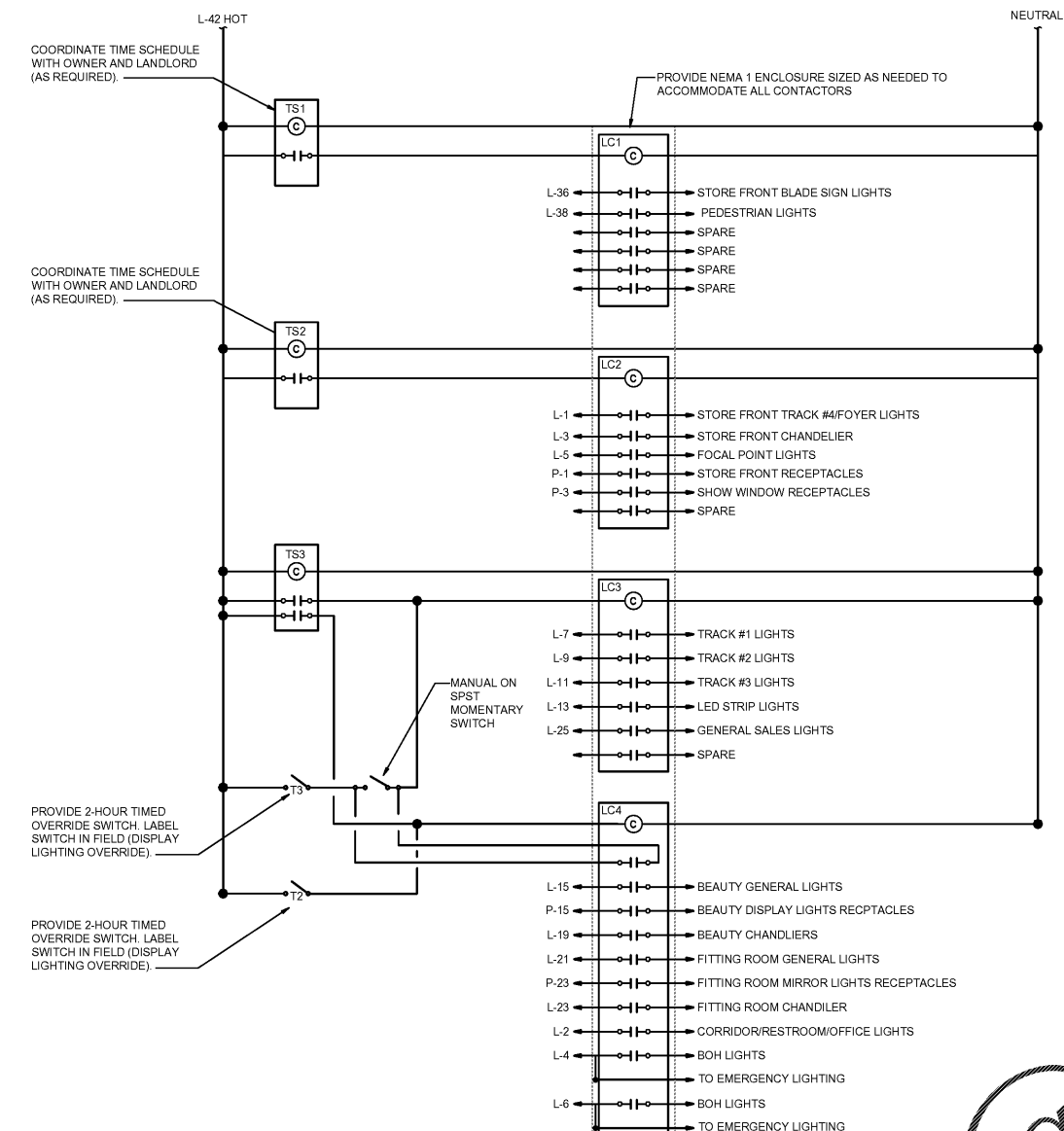


Order Plans

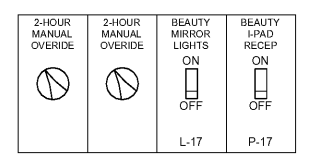


1 LIGHTING CONTROL SCHEMATIC  
N.T.S.

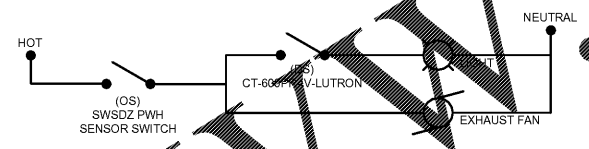
- TIME CLOCK NOTES:**
- THIS DETAIL IS SCHEMATIC IN NATURE. PROVIDE ALL NECESSARY WIRING, CONDUIT, DEVICES, BOXES, ETC FOR A COMPLETE OPERATING LIGHTING SYSTEM.
  - TIMESWITCHES -** TS1-PROVIDE TORQUE DIGITAL EWZ SWITCH, MODEL EWZ201 (2-CHANNEL, SPST). TS2-PROVIDE TORQUE DIGITAL EWZ SWITCH, MODEL EWZ201 (2-CHANNEL, SPST).
  - CONTACTORS - PROVIDE SQUARE D MODEL LW1E ELECTRICALLY HELD CONTACTORS WITH POLE QUANTITY AS INDICATED.
  - 2-HOUR TIMED OVERRIDE SWITCH - PROVIDE PARAGON SWP2H 0-2 HOUR SWITCH WITH 15 MINUTE INTERVAL 15 MINUTE OVERRIDE SWITCH.

**SWITCH NOTES:**

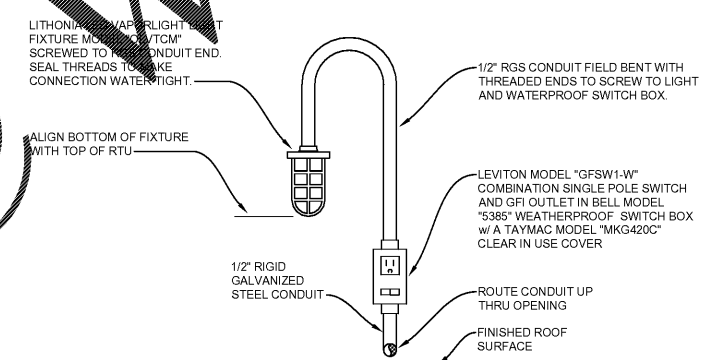
- EACH SWITCH MUST BE LIGHTED TOGGLE TYPE SWITCH, FACTORY WIRED TO ILLUMINATE WHEN LOAD IS ON. PROVIDE NEUTRAL CONNECTION TO EACH SWITCH AS NECESSARY.
- PROVIDE EACH SET OF SWITCHES IN MULTI-GANG OUTLET BOX WITH SINGLE COVERPLATE. PROVIDE LABEL ABOVE EACH SWITCH WITH DESCRIPTION OF LIGHTING CONTROLLED AS INDICATED.
- DIMMER SWITCHES TO BE DIVA DIMMER SWITCH MODEL CT-600PR-IV-LUTRON AS REQUIRED.



2 LIGHTING SWITCH BANK DETAIL  
N.T.S.

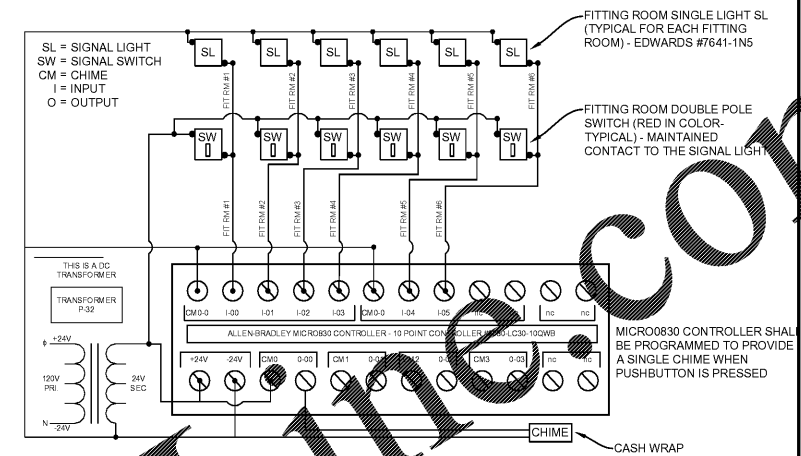


4 RESTROOM SWITCH DETAIL  
N.T.S.



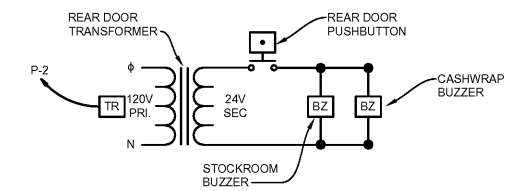
6 WSHP LIGHT/RECEPTACLE  
N.T.S.

NOTE: COORDINATE EXACT LOCATION OF RECEPTACLE & LIGHT WITH MECH. CONTR. SO AS NOT TO BLOCK ACCESS PANELS



3 FITTING ROOM NOTIFICATION SYSTEM DETAIL  
N.T.S.

- PROVIDE LOW VOLTAGE TRANSFORMER (ABOVE ACCESSIBLE CEILING), SWITCH (INSIDE FITTING ROOM), SIGNAL LIGHT (OUTSIDE FITTING ROOM ABOVE DOOR), MICROLOG CONTROLLER (ELECTRICAL PANELS), AND CHIME (ABOVE CASHWRAP) FOR FITTING ROOM NOTIFICATION SYSTEM. ALL WIRING TO BE IN CONDUIT. COORDINATE EXACT MOUNTING LOCATIONS AND HEIGHTS WITH OWNER/ARCHITECT.
- ALTERNATE E1, CONTRACTOR TO PROVIDE 3/4" CONDUIT FOR LOW VOLTAGE WIRING.



5 DELIVERY NOTIFICATION SYSTEM DETAIL  
N.T.S.

- REFER TO ELECTRICAL SPECIFICATIONS ON SHEET E0.0 FOR SPECIFICATIONS ON THE NOTIFICATION SYSTEM.
- PROVIDE LOW VOLTAGE TRANSFORMER (+90VAF), BUZZER (AT STOCKROOM DOOR), PUSH BUTTON (+48VAF), AND CHIME (ABOVE CASHWRAP) FOR DOOR BELL SYSTEM. ALL WIRING TO BE IN CONDUIT. COORDINATE EXACT MOUNTING LOCATIONS AND HEIGHTS WITH OWNER/ARCHITECT.
- ALTERNATE E1, CONTRACTOR TO PROVIDE 3/4" CONDUIT FOR LOW-VOLTAGE WIRING.

E.C. TO VERIFY ALL EXISTING ELECTRICAL SERVICE CONDITIONS PRIOR TO BID. E.C. TO REUSE EXISTING PANELS, CKT BREAKERS AND DISCON. SW. (IF IN GOOD CONDITION AND SIZED APPROPRIATELY) OR FURNISH AND INSTALL NEW. REUSE OF ANY EXISTING ELECTRICAL EQUIPMENT SHALL BE REFLECTED IN BID.

**FIELD VERIFY ALL CONDITIONS**

DESIGN DRAWINGS ARE SCHEMATIC. THIS CONTRACTOR SHALL VISIT THE SITE PRIOR TO BIDDING OR AWARD OF CONTRACT TO INSPECT EXISTING FIELD CONDITIONS. THIS CONTRACT SHALL INCLUDE ALL LABOR AND MATERIALS NECESSARY FOR FIELD MODIFICATIONS DUE TO EXISTING CONDITIONS.

THE CONTRACTOR SHALL CONTACT THE ARCHITECT, ENGINEER OR OWNER PRIOR TO BIDDING FOR INTERPRETATIONS AND CLARIFICATIONS OF THE DESIGN AND INCLUDE IN HIS BID ALL COSTS TO MEET THE DESIGN INTENT. CLARIFICATIONS MADE BY THE ARCHITECT, ENGINEER OR OWNER AFTER BIDDING WILL BE FINAL AND SHALL BE IMPLEMENTED AT CONTRACTORS COST.

BIDDING CONTRACTORS SHALL HAVE A WORKING KNOWLEDGE OF LOCAL CODES AND ORDINANCES AND SHALL INCLUDE IN THEIR BIDS THE COSTS FOR ALL WORK INSTALLED IN STRICT ACCORDANCE WITH GOVERNING CODES. THE PLANS AND SPECIFICATIONS NOT WITHSTANDING, THE CONTRACTOR SHALL ALERT ARCHITECT, ENGINEER OR OWNER OF ANY APPARENT DISCREPANCIES BETWEEN GOVERNING CODES AND DESIGN INTENT.

**KEN NISCH, AIA**

2910 Inkster Road  
Suite 200  
Southfield, MI 48034 USA  
248 355 0890  
248 355 0895 Fax

Copyright © 2017  
KEN NISCH, AIA  
All rights reserved

Certification:

**NORTH CAROLINA PROFESSIONAL ENGINEER**  
7848  
037711  
M. NISCH, AIA  
10/10/2016

04/06/2018

Consultants:  
**NETAL DESIGN CONSULTANT**

JDA INC  
2910 Inkster Rd.  
Suite 200  
Southfield, MI 48034 USA  
248 355 0890  
248 355 0895 Fax  
www.jda.com

1-218-082

**M. Engineering**  
750 Brookside Blvd.  
Westerville, Ohio 43081  
phone: 614.839.4539  
fax: 614.839.2222  
www.mengineering.us.com

Project Location:  
**Soft Surroundings**  
BILTMORE VILLAGE  
10 BROOK STREET  
SPACE #60  
ASHEVILLE, NC 28803  
4,740 SQUARE FEET

- DRAWINGS ISSUED FOR:**
- programming
  - schematic des.
  - design dev.
  - bidding
  - permit/LL review 04-06-18
  - construction

REVISIONS:

Prj. no. 18-41-031  
Drawn PTM  
Checked RK  
Approved RK

Do not scale this print. Use figured dimensions only.

Drawing title:  
**ELECTRICAL RISER & POWER DETAILS**

Sheet no.  
**E1.1**