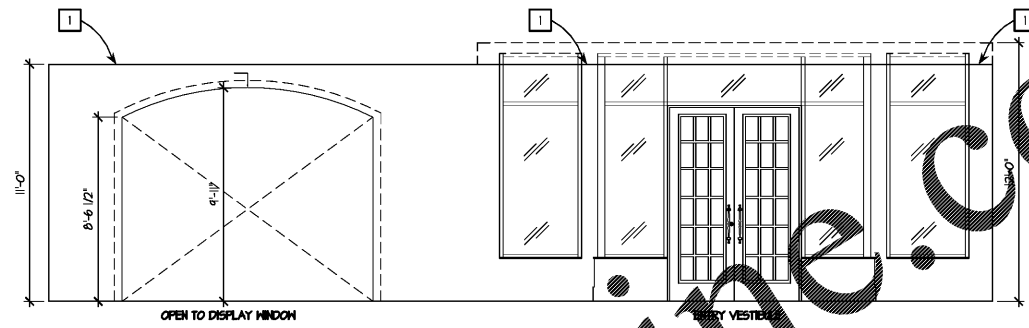
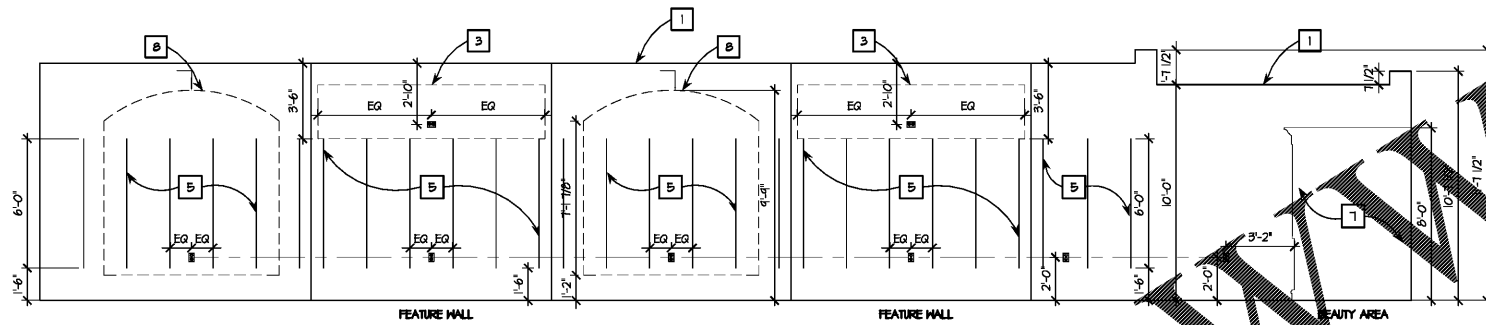


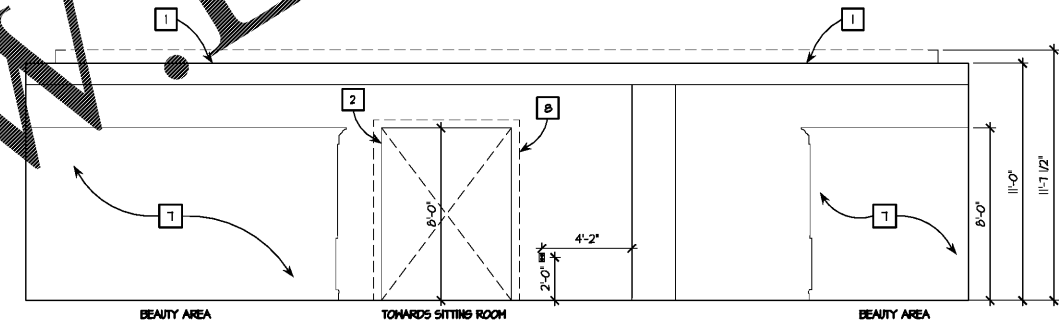
2 SOUTH INTERIOR ELEVATION  
A-1.1 SCALE: 1/4" = 1'-0"



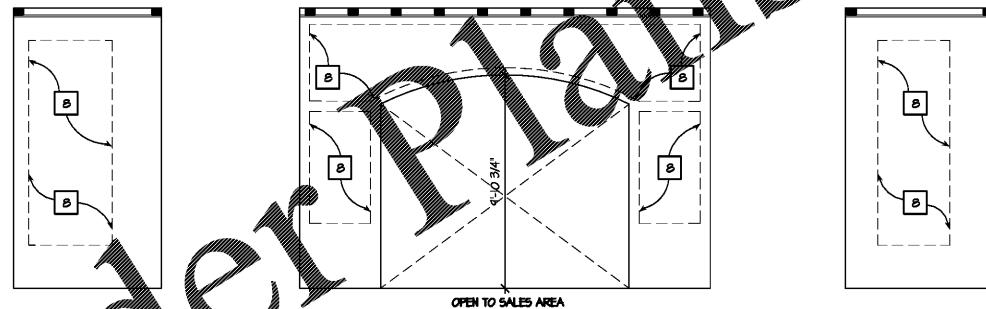
1 WEST INTERIOR ELEVATION  
A-1.1 SCALE: 1/4" = 1'-0"



4 NORTH INTERIOR ELEVATION  
A-1.1 SCALE: 1/4" = 1'-0"



3 EAST INTERIOR ELEVATION  
A-1.1 SCALE: 1/4" = 1'-0"



5 DISPLAY WINDOW INTERIOR ELEVATION  
A-1.1 SCALE: 1/4" = 1'-0"

- 1 5/8" GYPSUM WALL BOARD SUSPENDED ON 1/8" HAT TRACK SECURED TO COLD ROLLED CHANNELS 48" ON CENTER (OR USE DRYWALL SUSPENSION SYSTEM OR EQUAL) SECURED FROM TOP CHORD OF BR JOISTS ABOVE. FRAME DETAILS AS SHOWN OR AS REQUIRED, CLARIFY IN BID CLARIFICATIONS.
- 2 FOR DOOR ROUGH OPENINGS, SEE A-1.2.
- 3 3/4" THICK, 12" WIDE FRT IN WALL PLYWOOD BLOCKING CENTER OF BLOCKING AT 4'-7 1/2" AFF. MOUNT PLYWOOD BETWEEN STUD FRAMING. AREAS NOTED.
- 4 GC. TO INSTALL IN WALL FRT BLOCKING ON END OF PARTITION FOR SECUREMENT OF FIXTURE HARDWARE. HARDWARE INDICATED OF FIXTURE ELEVATIONS. BLOCKING FROM FLOOR TO CEILING.
- 5 12" HIGH RECESSED HEAVY DUTY STANDARD WITH HEAD AT T-6" ABOVE FINISH FLOOR. CAPITOL #2080 RECESSED STANDARD HAS 1" SLOTS 2" ON CENTER. IT IS CRITICAL THAT ALL IN WALL STANDARDS ARE TO BE INSTALLED WITH SLOTTING ALIGNED HORIZONTALLY ALONG WITH BEING PLUMB AND PERPENDICULAR TO THE HORIZONTAL. FLAT TAPE DRYWALL TO STANDARD. SEE CONSTRUCTION DRAWING DETAIL.
- 6 LOCATION OF BACK WRAP STORAGE COUNTER INTERNAL ELECTRICAL AND COMMUNICATIONS OUTLETS. LOCATED TO BE COORDINATED WITH ELECTRICAL SHEETS.
- 7 COSMETIC COUNTERS WITH INTERNAL REQUIREMENTS FOR ELECTRICAL OUTLETS FOR VERTICAL DIVIDER LIGHTING, CORNICE LIGHTING AND AN OUTLET FOR A VIDEO MONITOR. CORNER CABINET HAS A SINK HALL MOUNTED FAUCET. PRIOR TO WALL CONSTRUCTION MILLWORK CONTRACTOR SUPPLIES GENERAL CONTRACTOR WITH FLOOR TEMPLATES FOR CABINET PLACEMENT TO INSURE ANGLED WALL PROPER PLACEMENT AND PLUMBING OUTLETS; COORDINATE WITH ELECTRICAL AND PLUMBING SHEETS.
- 8 REFERENCE FIXTURE DRAWING MILLWORK PACKAGE FOR DIRECTION OF ALL AREAS REQUIRING IN WALL FRT NAILER/BLOCKING FOR WALL APPLIED MOLDINGS AND ACCESSORIES.

NOTE: ANY AND ALL ARCHES SHOWN IN CONSTRUCTION DRAWINGS WILL BE PROVIDED BY THE MILLWORK CONTRACTOR FOR ROUGH FRAMING DIMENSIONS AS TRIM COME FOR THE MILLWORK VENDOR "FORMED TO RADIUS"

**KEN NISCH, AIA**

13110 Inkwood Road  
Suite 200  
Southfield, MI 48034 USA  
248 355 0890  
248 355 0895 Fax

Copyright © 2014  
KEN NISCH, AIA  
All rights reserved.

Certification:  
KENNETH E. NISCH, AIA  
No. SC740  
EXPIRATION DATE: 06.30.2018

DATE SIGNED: 03.30.2018

Consultants:  
**RETAIL DESIGN CONSULTANT**

JGA INC  
28355 Northwestern Hwy  
Suite 300  
Southfield, MI 48034 USA  
248 355 0890  
248 355 0895 Fax  
www.jga.com

JGA Prj #: 1-218-082

Project Location:  
**Soft Surroundings**  
**BILTMORE VILLAGE, SPACE #160**  
10 BROOK STREET  
ASHEVILLE, TN 28803

DRAWINGS ISSUED FOR:  
 programming  
 schematic des.  
 design dev.  
 bidding  
 permit/11 review 04-06-18  
 construction

REVISIONS:

Prj. no. **8-218-030**  
Drawn IN, GV  
Checked KR, GV  
Approved KN

Do not scale this print. Use figured dimensions only.

Drawing title:  
**CONSTRUCTION ELEVATIONS**

Sheet no.  
**A-3.1**

Order Plans @