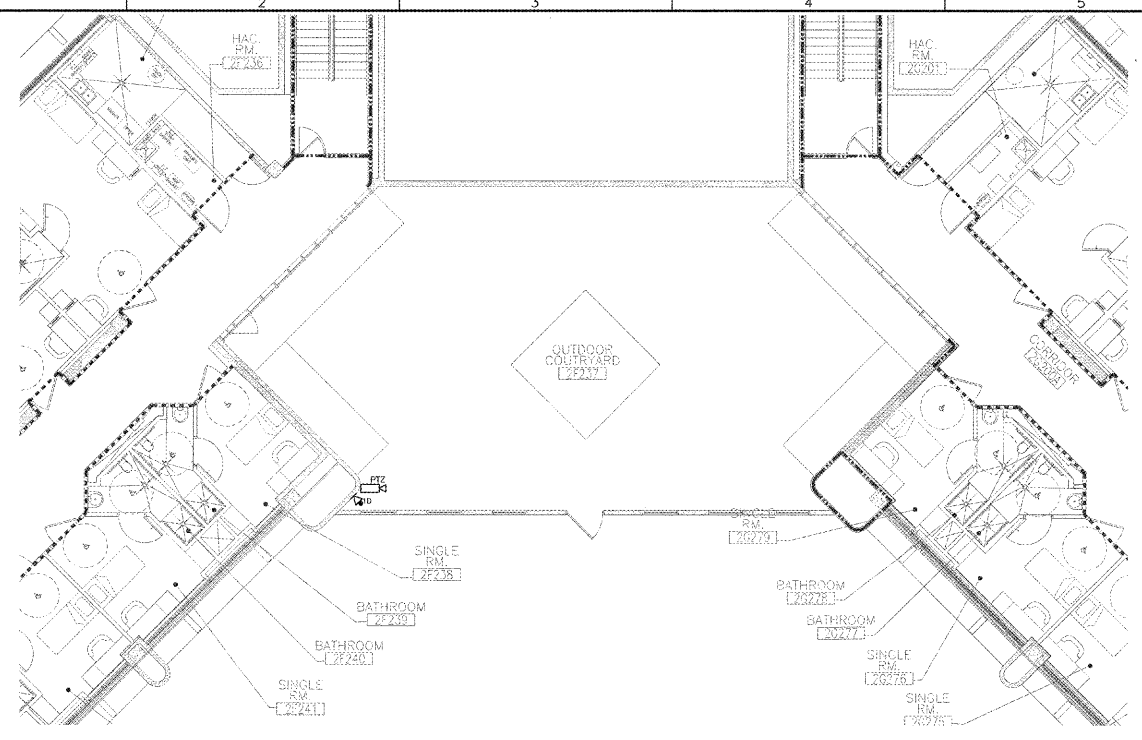


three inches = one foot
 one and one half inches = one foot
 one inch = one foot
 three quarters inch = one foot
 one half inch = one foot
 three eighths inch = one foot
 one quarter inch = one foot
 one eighth inch = one foot
 one eighth inch = one foot



WING "F" OUTDOOR
 COURTYARD - SYSTEMS
 C1 SCALE: 1/8" = 1'-0" 0' 4' 8' 12'

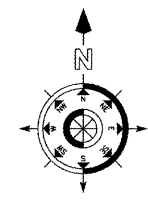
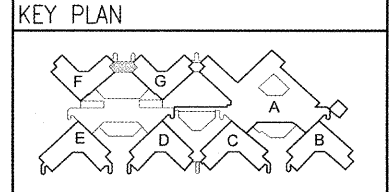
SHEET KEYNOTES (F)
 1. MOUNT CAMERAS AT 12'-0" ABOVE FINISHED GRADE.

WWW.LDILine.com

COORDINATION DRAWINGS
 SEE COVER SHEET FOR COORDINATION NOTES.

SYMBOLS LEGEND

	EXISTING WALL, DOOR, WINDOW, MILLWORK, FIXTURE OR OTHER FIXTURE OR ASSEMBLY TO REMAIN.
	NEW WALL
	SMOKE TIGHT WALL
	2-HOUR FIRE/SMOKE RATED WALL
	1 HOUR FIRE RATED WALL
	1 HOUR SMOKE BARRIER WALL
	NO PIPING OR DUCTWORK SHALL BE ROUTED THROUGH ELECTRICAL AND/OR DATA ROOMS.
	EXISTING CONCRETE COLUMN



REVISION NO.	REVISION DESCRIPTION	DATE

Department of Veterans Affairs
 Charlie Norwood
 VA Medical Center
 1 Freedom Way
 Augusta, Ga. 30904

Professional Engineer Seal for John G. Hopper, State of North Carolina, License No. 27178, dated 2/10/2017.

Architect/Engineer Address
Harrell, Saltrick & Hopper
 Design & Management Solutions for the Built Environment
 1015 TOWER POINT DRIVE, CHARLOTTE, NC 28227
 P 704.814.1120, F 704.521.0833
 WWW.HSRPC.COM
 COPYRIGHT © 2012 HARRELL, SALTRICK & HOPPER, PC
 HSR PROJECT # 12015

Recommended Approvals:

1. MEDICAL CENTER DIRECTOR	6. OPERATIONS SERVICE LINE MANAGER
2. ASSISTANT DIRECTOR	7. INFECTION CONTROL MANAGER
3. CHIEF OF STAFF	8. SAFETY MANAGER
4. ASSOC. DIRECTOR	9. GENERAL ENGINEER
5. SERVICE LINE MGRS.	10. COR

Drawing Title
MECHANICAL ROOMS AND OUTDOOR COURTYARD - SYSTEMS PLANS
 100% CONSTRUCTION DOCUMENTS
 FULLY SPRINKLERED

Project Title
RENOVATE MENTAL HEALTH UNITS

Drawn	Building Number	AutoCAD File Name
Checked	WAO	WAO
Revised	Const. Contract No.	

Date
 February 10, 2017

Project Number
 509-12-104

DRAWING No.
EY103