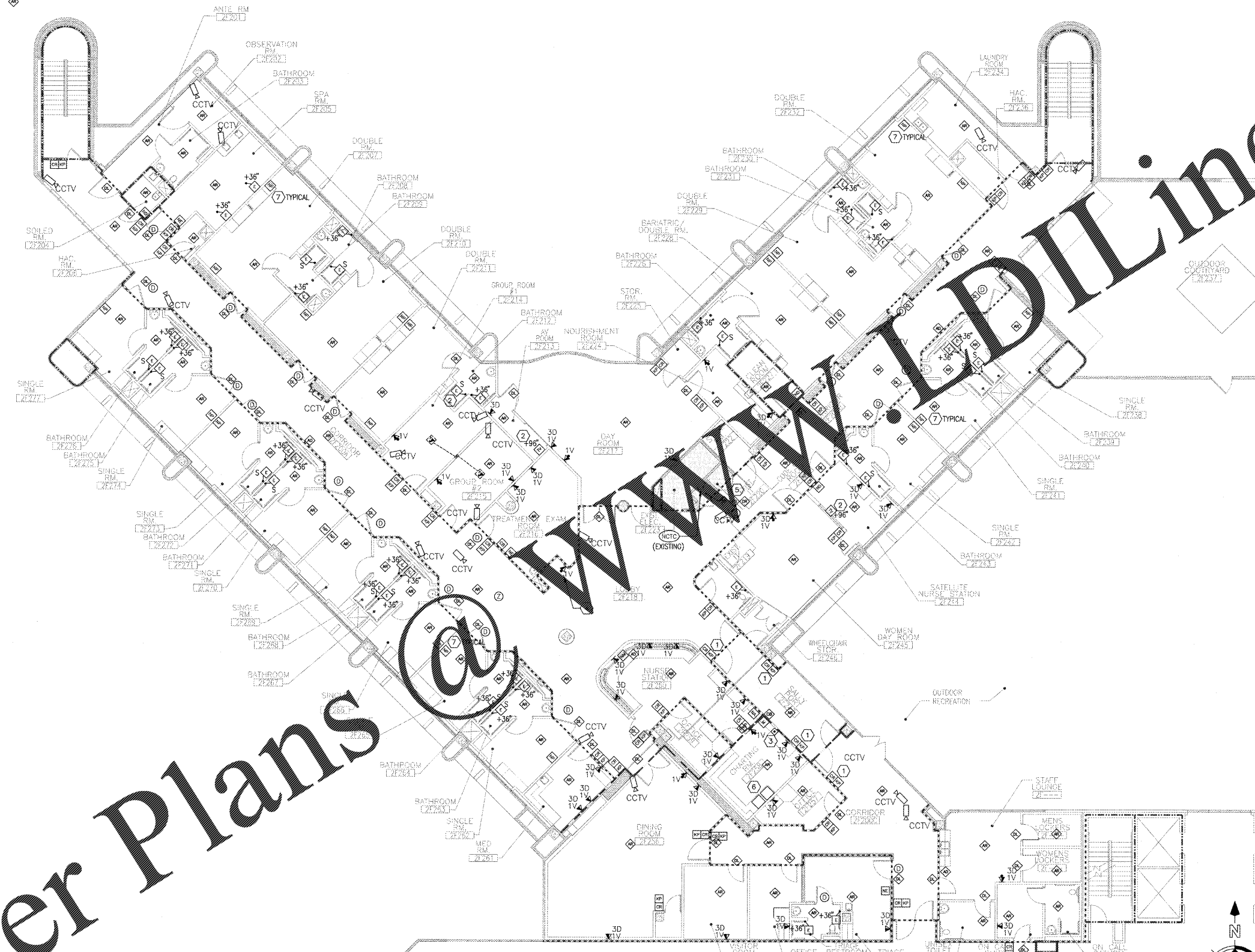
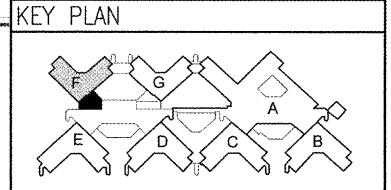


- GENERAL SHEET NOTES**
- CONFIRM TELEPHONE/DATA OUTLET LOCATIONS AND MOUNTING HEIGHTS WITH ARCHITECTURAL INTERIOR ELEVATIONS PRIOR TO ROUGH-IN.
 - UPON COMPLETION, CONTRACTOR SHALL TEST AND INSPECT THE SYSTEM FOR ALL REQUIRED FUNCTIONS AND DEMONSTRATE TO THE OWNER AND THE ENGINEER THAT REQUIRED FUNCTIONS MEET THE NEEDS OF THE OWNER AND VA SPECIFICATION SECTIONS 27-52-2.
 - IN AREAS WITH HARD CEILING, ALL JUNCTION AND PULLS BOXES SHALL BE INSTALLED WITHIN MAX. OF ACCESS PANELS.
 - COORDINATE WITH VENDOR PRECISE MOUNTING HEIGHTS AND HORIZONTAL MOUNTING POSITIONS FOR ALL NURSE CALL DEVICES. LOCATIONS OF DEVICES SHOULD BE COORDINATE FOR EACH APPLICATION. PATIENT STATIONS IN RELATION TO TV LOCATIONS, SHOWER STATIONS IN RELATION TO SHOWER HEADS, TOILET STATIONS IN RELATION TO TOILETS PROVIDED AND POSITION IN ROOM. OBTAIN APPROVAL BEFORE ROUGHING IN DEVICES.

- SHEET KEYNOTES (F)**
- SEE DETAIL ON SHEET E501 FOR SALLY PORT DOOR CONNECTION INFORMATION.
 - CONFIRM EACH TV OUTLET MOUNTING LOCATION AND HEIGHT WITH ARCHITECTURAL ELEVATIONS PRIOR TO ROUGH-IN.
 - PUSHBUTTON RELEASE FOR SALLYPORT DOORS.
 - FOR RECESSED PAY PHONE. MOUNT AT 48" AFF.
 - POWER SUPPLY, SYSTEM SUPERVISOR AND DATA RING JUNCTION BOX FOR DURESS ALARM SYSTEM. LOCATE IN ROOM WITH NURSE CALL EQUIPMENT.
 - VIDEO MONITORS FOR SECURITY CAMERAS. COORDINATE LOCATION WITH V.A.
 - NURSE CALL PATIENT STATIONS SHALL BE SINGLE BUTTON CALL STATIONS RATED FOR PSYCHIATRIC PATIENT USE. IT SHALL BE TAMPER RESISTANT CONSTRUCTION. LOCATE WITHIN ARMS LENGTH OF PATIENT BED.
 - DURESS ALARM DOOR LIGHTS SHALL BE MOUNTED IN CEILING AND MOUNTED ADJACENT TO AND ALIGNED WITH NURSE CALL DOME LIGHTS AT PATIENT ROOMS.

COORDINATION DRAWINGS
SEE COVER SHEET FOR COORDINATION NOTES.

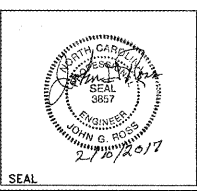
- SYMBOLS LEGEND**
- EXISTING WALL, DOOR, WINDOW, MILLWORK, FIXTURE OR OTHER FIXTURE OR ASSEMBLY TO REMAIN.
 - NEW WALL
 - SMOKE TIGHT WALL
 - 2-HOUR FIRE/ SMOKE RATED WALL
 - 1 HOUR FIRE RATED WALL
 - 1 HOUR SMOKE BARRIER WALL
 - NO PIPING OR DUCTWORK SHALL BE ROUTED THROUGH ELECTRICAL AND/OR DATA ROOMS.
 - EXISTING CONCRETE COLUMN



"F" WING SECOND FLOOR ELECTRICAL OVERALL FLOOR PLAN SYSTEMS
SCALE: 1/8" = 1'-0"

REVISION	REVISION DESCRIPTION	By	Date

Department of Veterans Affairs
Charlie Norwood
 VA Medical Center
 1 Freedom Way
 Augusta, Ga. 30904



Architect/Engineer Address
Harrell, Saltrick & Hopper
 Design & Management Solutions for the Built Environment
 8016 TURNER POINT DRIVE
 CHARLOTTE, NC 28227
 P 704.814.1520 F 704.381.0833
 WWW.HSH.COM
 COPYRIGHT © 2012 HARRELL, SALTRICK & HOPPER, P.C.
 HSH PROJECT # 13015

Recommended Approvals:

1. MEDICAL CENTER DIRECTOR	6. OPERATIONS SERVICE LINE MANAGER
2. ASSISTANT DIRECTOR	7. INFECTION CONTROL MANAGER
3. CHIEF OF STAFF	8. SAFETY MANAGER
4. ASSOC. DIRECTOR	9. GENERAL ENGINEER
5. SERVICE LINE MGRS.	10. COR

Drawing Title
"F" WING ELECTRICAL OVERALL FLOOR PLAN SYSTEMS

100% CONSTRUCTION DOCUMENTS

FULLY SPRINKLERED

Project Title
RENOVATE MENTAL HEALTH UNITS

Drawn	Building Number	AutoCAD File Name
Checked	Reviewed	Const. Contract No.

Date
February 10, 2017

Project Number
509-12-104

DRAWING No.
EY101

