

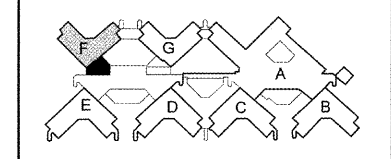
**GENERAL SHEET NOTES**

- A. REFER TO ARCHITECTURAL REFLECTED CEILING PLANS FOR EXACT LOCATION OF ALL CEILING FIXTURES.
- B. EMERGENCY EGRESS LIGHTING FIXTURES SHALL BE UNSWITCHED.
- C. SEE ARCHITECTURAL CASEWORK SECTIONS FOR UNDERCOUNTER LIGHTING LOCATION AND CONNECTION ROUTING.
- D. IN ALL PATIENT ACCESSIBLE AREAS SUCH AS PATIENTS ROOMS, DAY ROOM, DINING ROOM, ALL SWITCHES AND FIXTURES SHALL BE SHOCK RESISTANT.

**SHEET KEYNOTES**

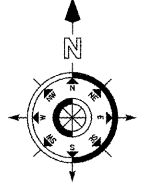
- 1. MASTER SWITCH FOR LIGHTING CONTACTOR CONTROL OF CORRIDOR LIGHTING.
- 2. FIXTURES CONTROLLED BY CONTACTOR IN PATIENT CORRIDORS TO BE CIRCUITED TO H2FA-3.
- 3. PROCEDURE TREATMENT TABLE LIGHT, COORDINATE EXACT LOCATION WITH EQUIPMENT INSTALLER PRIOR TO ROUGH-IN.
- 4. EXISTING LIGHTING AND SWITCHING IN THIS ROOM TO REMAIN.
- 5. EXISTING LIGHTING CONTACTOR TO BE REUSED FOR NEW CORRIDOR LIGHTING CONTROL.
- 6. PROVIDE DAYLIGHT SENSOR FOR CONTROL OF THE INDICATED SWITCHLEG.
- 7. ALL FIXTURES CONTROLLED BY CONTACTOR IN THE LOBBY AND OTHER INDICATED AREAS TO BE CIRCUITED TO H2FA-5.
- 8. EMERGENCY AND NORMAL POWER LIGHTING CIRCUITS FOR RESPECTIVE PATIENT ROOMS. CONNECT TO THE DESIGNATED EMERGENCY AND NORMAL LIGHT FIXTURES THROUGH THE RESPECTIVE SWITCHES.

**KEY PLAN**



**"F" WING SECOND FLOOR ELECTRICAL OVERALL FLOOR PLAN - LIGHTING**

(F1) SCALE: 1/8" = 1'-0"



three inches = one foot  
 one and one half inches = one foot  
 one inch = one foot  
 three quarters inch = one foot  
 one half inch = one foot  
 one quarter inch = one foot  
 three eighths inch = one foot  
 one eighth inch = one foot

Order Plans @ WWW.ArchLine.com

REVISION NO.	REVISION DESCRIPTION	DATE

**Department of Veterans Affairs**  
 Charlie Norwood  
 VA Medical Center  
 1 Freedom Way  
 Augusta, Ga. 30904

Architect/Engineer Address  
**Harrell, Saltrick & Hopper**  
 Design & Management Solutions for the Built Environment  
 806 TOWER POINT DRIVE  
 CHARLOTTE, NC 28207  
 P 704.814.1320 F 704.321.0833  
 WWW.HSHPC.COM  
 COPYRIGHT © 2017 HARRELL, SALTRICK & HOPPER, PC  
 HIGH PROJECT # 12015

Recommended Approvals:	
1. MEDICAL CENTER DIRECTOR	6. OPERATIONS SERVICE LINE MANAGER
2. ASSISTANT DIRECTOR	7. INFECTION CONTROL MANAGER
3. CHIEF OF STAFF	8. SAFETY MANAGER
4. ASSOC. DIRECTOR	9. GENERAL ENGINEER
5. SERVICE LINE MGRS.	10. COR

Drawing Title	"F" WING ELECTRICAL OVERALL FLOOR PLAN - LIGHTING
CONSTRUCTION DOCUMENTS	100% FULLY SPRINKLERED

Project Title	RENOVATE MENTAL HEALTH UNITS
Date	February 10, 2017
Project Number	509-12-104
Building Number	
AutoCAD File Name	
Const. Contract No.	

DRAWING No.	EL101
-------------	-------

