

NOTE:
THE FIRE ALARM SYSTEM SHALL BE MAINTAINED TO THE EXTENT POSSIBLE DURING CONSTRUCTION. REFER TO FA001 FOR ADDITIONAL INSTRUCTIONS.

- A. COORDINATE LIMITS AND PROVISIONS OF DEMOLITION WITH ARCHITECTURAL DEMOLITION PLANS.
- B. REFER TO DEMOLITION NOTES THIS SHEET FOR ADDITIONAL INFORMATION.
- C. REFER TO SHEET E001 FOR TYPICAL SYMBOLS AND ABBREVIATIONS USED IN THIS DRAWING.
- D. PRIOR TO ITS REMOVAL AND DISPOSAL, ALL L.T./DATA CABLING OR ASSOCIATED PANELS, SHALL BE REVIEWED BY THE OWNER. REPRESENTATIVE SHALL BE PRESENT TO SUPERVISE THE DISCONNECTION OF ALL CABLES.
- E. REMOVE ALL LIGHTS, RECEPTACLES, OUTLETS, NURSE CALL DEVICES, TV, VIDEO DEVICES, AND CONNECTIONS TO HVAC SYSTEMS, ETC. IN HATCH AREAS, PATCH OPENINGS IN WALLS THAT ARE TO REMAIN. REFER TO NOTE E THIS SHEET FOR ADDITIONAL INFORMATION.

- SHEET KEYNOTES (K)**
1. PANELS, TRANSFORMERS, LIGHTS, SWITCHES, RECEPTACLES, ETC. IN THIS ROOM ARE EXISTING TO REMAIN.
 2. NURSE CALL TERMINAL CABINET, AMPLIFIER, TV HEAD END EQUIPMENT, LIGHTS, RECEPTACLES, ETC. IN THIS ROOM ARE EXISTING TO REMAIN.
 3. TELEPHONE, FIRE ALARM, PAGING EQUIPMENT, DATA RACK, LIGHTS, RECEPTACLES ETC. IN THIS ROOM ARE EXISTING TO REMAIN.

ELECTRICAL DEMOLITION NOTES:

- A. SEE SHEET G101, GENERAL SHEET NOTE D, FOR F-WING FIRST FLOOR ABOVE CEILING DEMOLITION COORDINATION AND G102, GENERAL SHEET NOTE D, FOR G-WING FIRST FLOOR ABOVE CEILING DEMOLITION COORDINATION.
- B. COORDINATE LIMITS AND PROVISIONS OF DEMOLITION WITH ARCHITECTURAL DEMOLITION PLANS AND NOTES.
- C. PRIOR TO THE START OF ALL DEMOLITION WORK, THE CONTRACTOR SHALL TRACE AND IDENTIFY THE FEEDERS AND BRANCH CIRCUITS SERVING ALL ELECTRICAL EQUIPMENT, LIGHT FIXTURES, RECEPTACLES, FIXED EQUIPMENT, PANEL BOARDS, TRANSFORMERS, ETC. THE ELECTRICAL CONTRACTOR SHALL ALSO TRACE AND IDENTIFY ALL FEEDERS AND CIRCUITS SERVING ALL AREAS ADJACENT TO INDICATED AREAS OF DEMOLITION TO CONFIRM CIRCUITS SERVING BOTH NEW WORK AREA AND NON-RENOVATED AREA. THE CONTRACTOR SHALL PROVIDE A REPORT OF THESE FINDINGS TO THE COTR AND THE OWNER.
- D. ELECTRICAL CONTRACTOR SHALL REMOVE ALL CEILING AND WALL MOUNTED DEVICES, SYSTEMS, AND ASSOCIATED CIRCUITRY AND CONDUIT WITHIN THE AREA TO BE DEMOLISHED OR AS REQUIRED TO FACILITATE NEW CONSTRUCTION UNLESS OTHERWISE INDICATED. CONDUCTORS AND CONDUIT SHALL BE REMOVED BACK TO SOURCE. FOR CONDUIT AND CONDUCTORS BEING REMOVED BACK TO ELECTRICAL PANELS, REMOVE CONDUCTORS COMPLETELY AND REMOVE CONDUIT BACK TO CEILING SPACE DIRECTLY ABOVE PANEL AND CAP. ABANDONED CIRCUIT BREAKERS SHALL BE TURNED OFF AND LABELED AS SPARE.
- E. ASSOCIATED CIRCUITRY INCLUDES CONDUIT, CONDUCTORS, BOXES, WIRING DEVICES, COVER PLATES, LAMPS, FIXTURES, WIREWAYS, SWITCHES, STARTERS, ETC. WHICH ARE ASSOCIATED WITH THE ITEM TO BE REMOVED.
- F. ALL OVERCURRENT PROTECTIVE DEVICES SHALL REMAIN AS AN INTEGRAL PART OF THE EXISTING PANEL OR SWITCHBOARD. LABEL AS SPARE OR USE FOR NEW CIRCUITS AS REQUIRED. UPDATE PANEL BOARD DIRECTORY AS NECESSARY TO SHOW ALL CHANGES IN PANEL BOARD LOAD.
- G. WHERE CONDUIT, ASSOCIATED WITH AN ITEM SHOWN TO BE REMOVED, IS IN AN INACCESSIBLE AREA SUCH AS ENCASED IN CONCRETE, ABANDON ALL INACCESSIBLE CONDUIT IN PLACE AND CAP IT AT BOTH ENDS.
- H. WHERE SUCH INACCESSIBLE CONDUITS OR MUST BE TERMINATED IN AN ACCESSIBLE AREA REMOVE THE CONDUIT OR BOX BELOW THE FINISHED SURFACE OF WALL, CEILING OR FLOOR. FILL WITH GROUT OR BE WITH NON-SMOKING GROUT AND FINISH TO MATCH ADJACENT SURFACES.
- I. WHERE ONLY A PORTION OF A CIRCUIT'S LOAD IS SCHEDULED TO BE REMOVED, REMOVE ONLY THAT PORTION ASSOCIATED WITH THE DEMOLISHED DEVICE TO A POINT WHERE THE REMAINING LOAD IS ACTIVE AND MAINTAINED IN A GOOD OPERATING CONDITION. ALL DEVICES REMAINING SHALL BE RECONNECTED TO EXISTING CIRCUIT AS REQUIRED.
- J. WHERE EXTENSION OF AN EXISTING CIRCUIT IS REQUIRED, RUN CONDUIT AND WIRE CONCEALED FROM THE ITEM'S EXISTING LOCATION TO ITS NEW LOCATION. EXISTING DEVICES TO REMAIN SHALL BE RE-FED AS REQUIRED TO MAINTAIN OPERATION.
- K. LIGHTING FIXTURES AND ALL OTHER EQUIPMENT/DEVICES BEING REMOVED SHALL BE TURNED OVER TO OWNER, OR DISPOSED OF AS DIRECTED BY OWNER.
- L. DEMOLITION WORK SHALL BE PHASED IF SO INDICATED ON ARCHITECTURAL PLANS. THE CONTRACTOR SHALL SCHEDULE A DEMOLITION COORDINATION MEETING WITH THE ARCHITECT, ENGINEER, AND OWNER PRIOR TO THE START OF ANY DEMOLITION IN EACH SPECIFIED AREA BUT, AFTER CIRCUIT TRACING IS DONE.
- M. REMOVE ALL CONDUIT, WIRING, DEVICES, EQUIPMENT AND ANY OTHER ELECTRICAL APPURTENANCES RENDERED USELESS AS A RESULT OF DEMOLITION OR FOUND TO BE ABANDONED DURING CONSTRUCTION. REMOVAL OF ABANDONED AND USELESS WIRING SHALL BE BACK TO THE SOURCE, EVEN IF OUTSIDE LIMITS OF CONSTRUCTION. REMOVE CONDUCTORS COMPLETELY AND REMOVE CONDUIT BACK TO CEILING SPACE DIRECTLY ABOVE PANEL AND CAP.
- N. CONTRACTOR SHALL PATCH AND/OR FIRE STOP ALL VOIDS IN WALLS, DOORS LEFT OVER FROM OR FOUND DURING DEMOLITION. REMOVE AS REQUIRED TO MAINTAIN ORIGINAL BUILDING INTEGRITY AND ASSEMBLIES.
- O. NOTE: THE REMAINDER OF BUILDING SHALL REMAIN IN OPERATION DURING THIS RENOVATION. CONTRACTOR SHALL COORDINATE FULLY WITH ADMINISTRATION IN ORDER TO CAUSE AS LITTLE DISRUPTION AS POSSIBLE TO THE DAILY FUNCTIONING OF THE FACILITY, AND TO MAINTAIN THE COMFORT AND SAFETY OF ALL PERSONNEL AND VISITORS. CONTRACTOR TO PATCH HOLES AND PAINT WHERE WALL DEVICES WERE REMOVED.

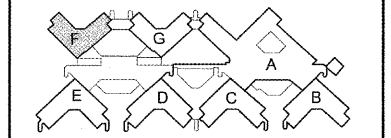
COORDINATION DRAWINGS

SEE COVER SHEET FOR COORDINATION NOTES.

SYMBOLS LEGEND

- EXISTING WALL, DOOR, WINDOW, MILLWORK, FIXTURE OR OTHER FEATURE OR ASSEMBLY TO BE REMOVED.
- EXISTING WALL, DOOR, WINDOW, MILLWORK, FIXTURE OR OTHER FEATURE OR ASSEMBLY TO REMAIN.
- NEW WALL
- SMOKE TIGHT WALL
- 2-HOUR FIRE/ SMOKE RATED WALL
- 1 HOUR FIRE RATED WALL
- 1 HOUR SMOKE BARRIER WALL
- PROJECT LIMITS OF WORK
- NO PIPING OR DUCTWORK SHALL BE ROUTED THROUGH ELECTRICAL AND/OR DATA ROOMS.
- EXISTING CONCRETE COLUMN

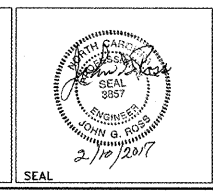
KEY PLAN



"F" WING SECOND FLOOR ELECTRICAL OVERALL FLOOR PLAN - DEMOLITION
SCALE: 1/8" = 1'-0"

REVISION	DESCRIPTION	DATE

Department of Veterans Affairs
Charlie Norwood
VA Medical Center
1 Freedom Way
Augusta, Ga. 30904



Architect/Engineer Address
Harrell, Saltrick & Hopper
 Design & Management Solutions for the Built Environment
 1001 TOWER POINT DRIVE CHARLOTTE, NC 28227 P 704.914.1100 F 704.371.0833
 WWW.HSHPC.COM
 COPYRIGHT © 2012 HARRELL, SALTRICK & HOPPER, PC
 HSH PROJECT # 12015

Recommended Approvals:	
1. MEDICAL CENTER DIRECTOR	6. OPERATIONS SERVICE LINE MANAGER
2. ASSISTANT DIRECTOR	7. INFECTION CONTROL MANAGER
3. CHIEF OF STAFF	8. SAFETY MANAGER
4. ASSOC. DIRECTOR	9. GENERAL ENGINEER
5. SERVICE LINE MGRS.	10. COR

Drawing Title "F" WING ELECTRICAL OVERALL FLOOR PLAN - DEMOLITION	Project Title RENOVATE MENTAL HEALTH UNITS
100% CONSTRUCTION DOCUMENTS	Building Number
FULLY SPRINKLERED	AutoCAD File Name
Checked	Const. Contract No.

Date February 10, 2017	Project Number 509-12-104
DRAWING No. ED101	Reviewed

