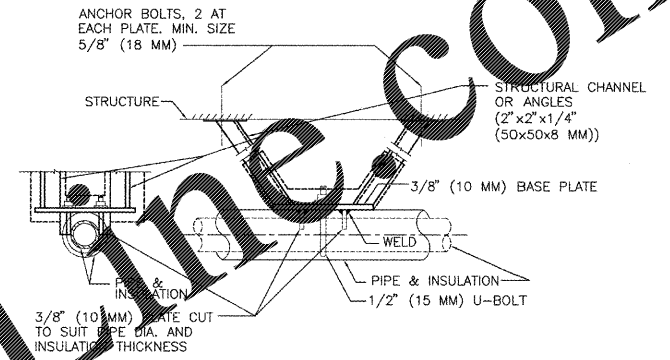
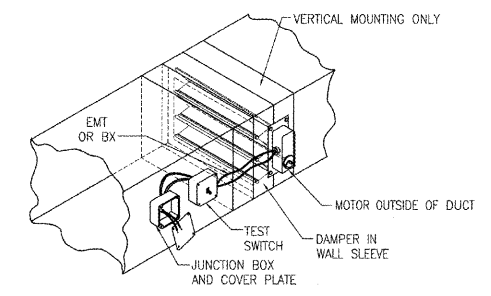


(A1) EXHAUST RISER F1 SCALE: NONE
 (A2) EXHAUST RISER F2 SCALE: NONE
 (A4) EXHAUST RISER F3 SCALE: NONE
 (A6) EXHAUST RISER F4 SCALE: NONE



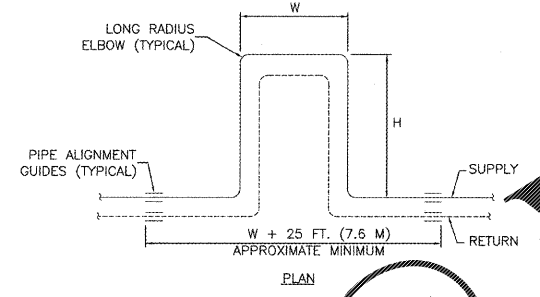
NOTE: INSULATE ANCHOR AS INDICATED FOR COLD PIPING.

(D8) HORIZONTAL PIPE ANCHOR DETAIL SCALE: NONE



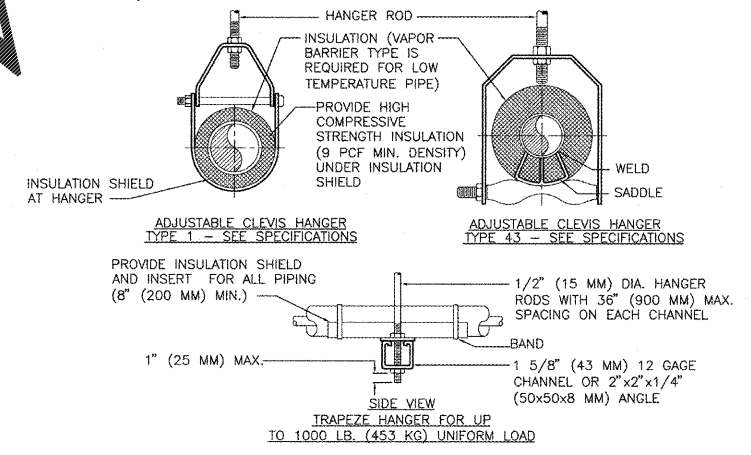
NOTES:
 1. ALL MOTORS SHALL BE 115V, 60Hz, FACTORY-MOUNTED, UL APPROVED.
 2. ALL ELECTRICAL CONNECTIONS MUST COMPLY WITH THE LOCAL CODE REQUIREMENT.
 3. MOTOR SHALL BE FIELD REPLACEABLE WITHOUT DISTURBING PULLEY-CABLE DAMPER SYSTEM.
 4. MOTORS SHALL BE WIRED THROUGH EMT OR GREENFIELD TO A STANDARD JUNCTION BOX LOCATED ON THE OUTSIDE OF THE DUCT.
 5. FIELD WIRE AND INSTALL AS REQUIRED. PROVIDE INDIVIDUAL TEST SWITCH (BY MANUFACTURER) FOR EACH DAMPER. PERFORM OPERATING TEST AFTER INSTALLATION.
 6. MOTOR SHALL BE LOCATED TO PROVIDE ACCESS FOR MAINTENANCE. PROVIDE ACCESS DOOR IN DUCTWORK IN ACCESSIBLE LOCATION.

(E8) SMOKE DAMPER INSTALLATION SCALE: NONE



LOOP NO.	W (FT)	H (FT)
110-EL1	2	2
110-EL2	2	2

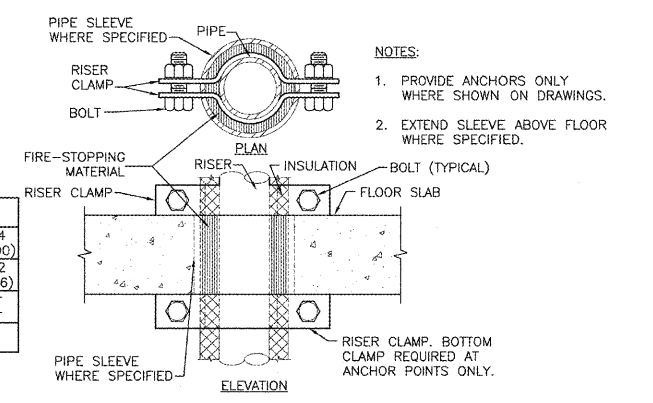
(E3) EXPANSION LOOP DETAIL SCALE: NONE



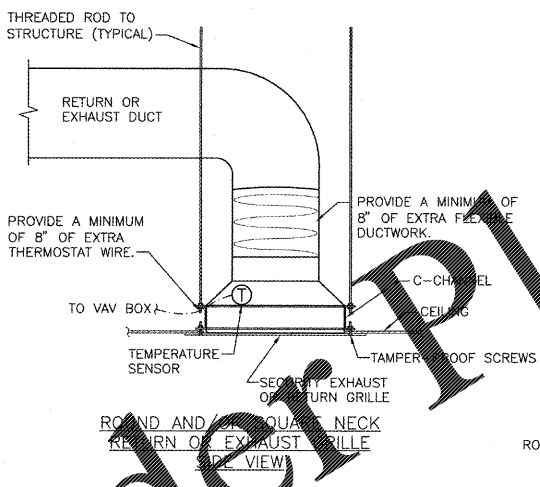
NOM. SIZE	MAXIMUM PIPE/TUBING SUPPORT SPACING																								
	IN.	THRU	3/4	1	1 1/4	1 1/2	2	2 1/2	3	4	5	6	8	10	12	14	16	18	20	24					
PIPE	7	(2.1)	(2.1)	(2.7)	(3.0)	(3.4)	(3.7)	(4.1)	(4.9)	(5.2)	(5.8)	(6.7)	(7.0)	(7.6)	(8.2)	(8.5)	(9.1)	(9.6)							
TUBING	5 FT	6	7	8	8	9	10	12	13	14	16														

NOTE: FOR TRAPEZE HANGER TAKE SPACING OF SMALLEST SIZE ON TRAPEZE.

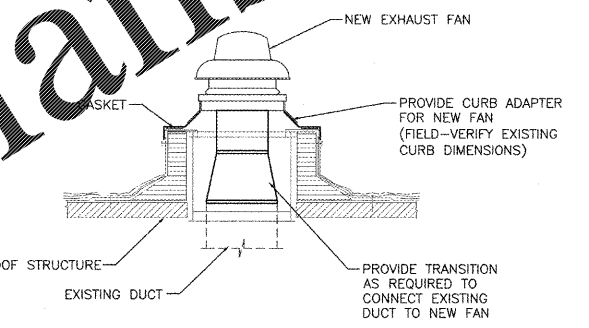
(F5) TYPICAL PIPE HANGERS SCALE: NONE



(F8) SUPPORT/ANCHOR FOR PIPE RISERS SCALE: NONE



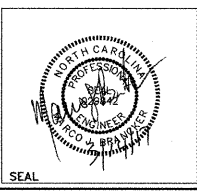
(F1) GRILLE MOUNTING DETAIL SCALE: NONE



(F3) ROOF CURB ADAPTER SCALE: NONE

REVISION	DESCRIPTION	DATE

Department of Veterans Affairs
 Charlie Norwood
 VA Medical Center
 1 Freedom Way
 Augusta, Ga. 30904



Harrell, Saltrick & Hopper
 Design & Management Solutions for the Built Environment
 8016 TOWER POINT DRIVE
 CHARLOTTE, NC 28227
 P 704.814.1330
 F 704.301.0833
 WWW.HSHFPC.COM
 COPYRIGHT © 2012 HARRELL, SALTRICK & HOPPER, PC
 REG. PROJECT # 1205

Recommended Approvals:	
1. MEDICAL CENTER DIRECTOR	6. OPERATIONS SERVICE LINE MANAGER
2. ASSISTANT DIRECTOR	7. INFECTION CONTROL MANAGER
3. CHIEF OF STAFF	8. SAFETY MANAGER
4. ASSOC. DIRECTOR	9. GENERAL ENGINEER
5. SERVICE LINE MGRS.	10. COR

Drawing Title MECHANICAL DETAILS
100% CONSTRUCTION DOCUMENTS
FULLY SPRINKLERED

Project Title RENOVATE MENTAL HEALTH UNITS		
Drawn	Building Number	AutoCAD File Name
Checked	Reviewed	Const. Contract No.

Date February 10, 2017
Project Number 509-12-104
DRAWING No. M503

