

GENERAL SHEET NOTES

- A. THE MECHANICAL CONTRACTOR SHALL OBTAIN WRITTEN PERMISSION FROM THE COR PRIOR TO MODIFYING ANY EXISTING SYSTEMS.
- B. TEMPERATURE SENSORS FOR VAV BOXES AND RADIANT PANELS ARE TO BE MOUNTED IN RETURN/EXHAUST OR APPROXIMATE LOCATION IS SHOWN. SEE TEMPERATURE SENSOR MOUNTING DETAIL ON M501.
- C. MECHANICAL CONTRACTOR SHALL COORDINATE FINAL LOCATION FOR EQUIPMENT, VALVES, FITTINGS, ETC. REQUIRING ACCESS FOR MAINTENANCE AND REPAIR ABOVE CEILING WITH ACCESS PANELS. SEE APPROVED GENERAL RESTRICTED CEILING PLANS FOR LOCATIONS.

SHEET KEYNOTES

- 1. LOCATE ALL VALVES, SERVICE RINGS AND ANY OTHER PIPING ACCESSORIES IN HALLWAYS NEAR ACCESS PANEL.
- 2. EXISTING COIL UNIT TO REMAIN.
- 3. JUNCTION BOXES VAV SINGLE DUCT TERMINAL UNIT CONTROL POWER BY ELECTRICAL CONTRACTOR. SEE ELECTRICAL POWER PLANS FOR EXACT LOCATIONS.

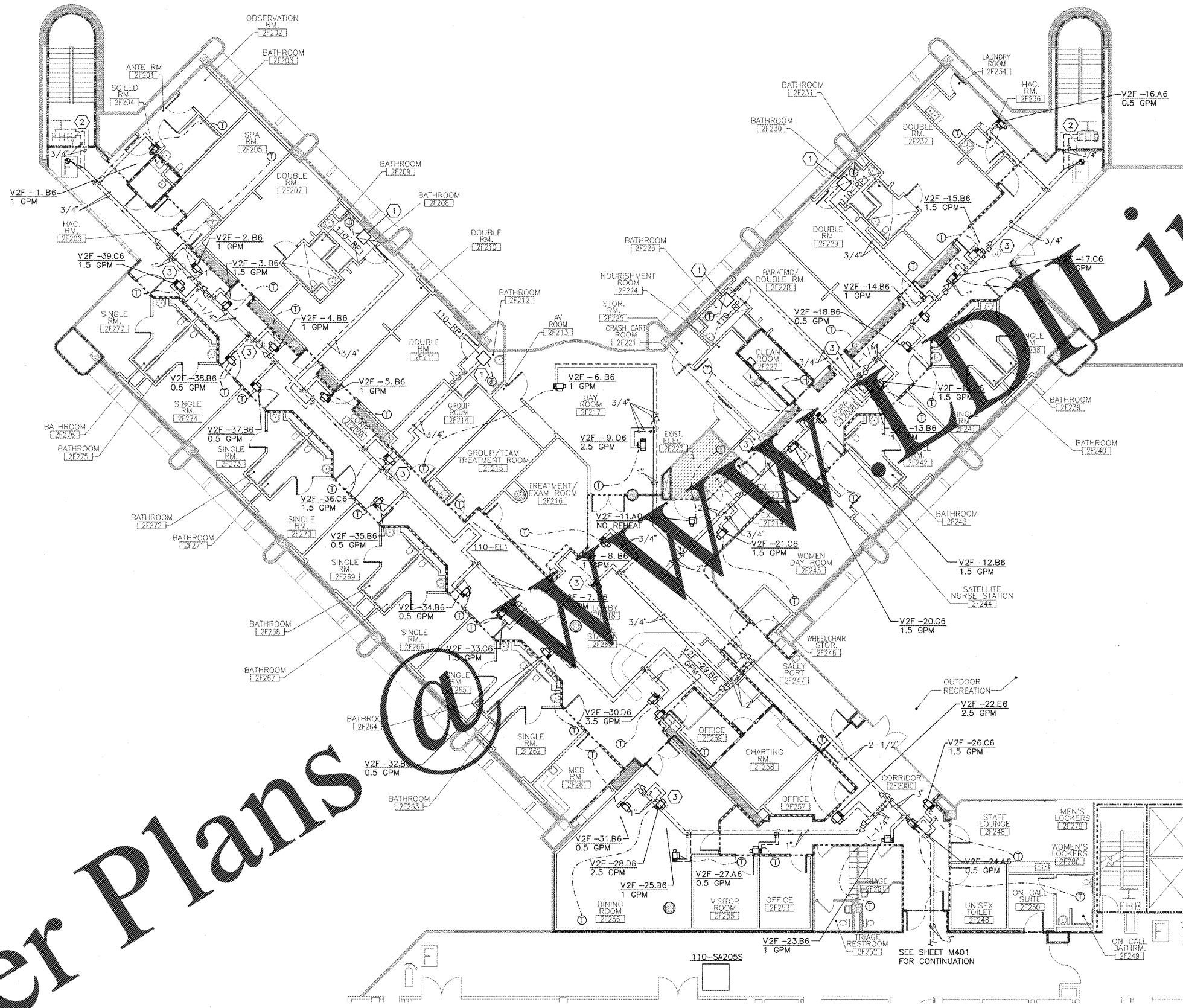
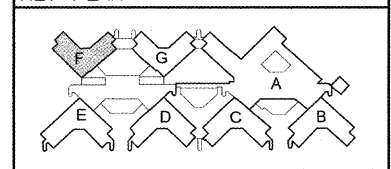
COORDINATION DRAWINGS

SEE COVER SHEET FOR COORDINATION NOTES.

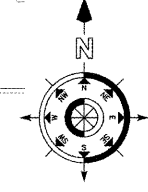
SYMBOLS LEGEND

- EXISTING WALL, DOOR, WINDOW, MILLWORK, FIXTURE OR OTHER FEATURE OR ASSEMBLY TO REMAIN.
- NEW WALL
- SMOKE TIGHT WALL
- 2-HOUR FIRE/ SMOKE RATED WALL
- 1 HOUR FIRE RATED WALL
- 1 HOUR SMOKE BARRIER WALL
- NO PIPING OR DUCTWORK SHALL BE ROUTED THROUGH ELECTRICAL AND/OR DATA ROOMS.
- EXISTING CONCRETE COLUMN

KEY PLAN



SEE SHEET M401 FOR CONTINUATION
"F" WING MECHANICAL PIPING PLAN - NEW WORK
 SCALE: 1/8" = 1'-0"

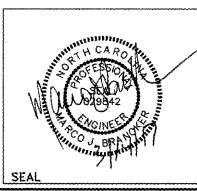


three inches = one foot
 one and one half inches = one foot
 one inch = one foot
 three quarters inch = one foot
 one half inch = one foot
 three eighths inch = one foot
 one quarter inch = one foot
 three sixteenths inch = one foot
 one eighth inch = one foot

Order Plans @ www.wdw.com

REVISION	DESCRIPTION	DATE

Department of Veterans Affairs
 Charlie Norwood
 VA Medical Center
 1 Freedom Way
 Augusta, Ga. 30904



Architect/Engineer Address
Harrell, Saltrick & Hopper
 Design & Management Solutions for the Built Environment
 2016 TOWER POINT DRIVE
 CHARLOTTE, NC 28227
 WWW.HSH-PC.COM
 P 704.814.1330
 F 704.351.8533
 COPYRIGHT © 2012 HARRELL, SALTRICK & HOPPER, PC
 HSH PROJECT # 12015

Recommended Approvals:	
1. MEDICAL CENTER DIRECTOR	6. OPERATIONS SERVICE LINE MANAGER
2. ASSISTANT DIRECTOR	7. INFECTION CONTROL MANAGER
3. CHIEF OF STAFF	8. SAFETY MANAGER
4. ASSOC. DIRECTOR	9. GENERAL ENGINEER
5. SERVICE LINE MGRS.	10. COR

Drawing Title	"F" WING MECHANICAL PIPING PLAN - NEW WORK
Project Title	RENOVATE MENTAL HEALTH UNITS
100% CONSTRUCTION DOCUMENTS	FULLY SPRINKLERED

Date	February 10, 2017
Project Number	509-12-104
Drawn	Building Number
Checked	Reviewed
AutoCAD File Name	Const. Contract No.
DRAWING No.	MP101

