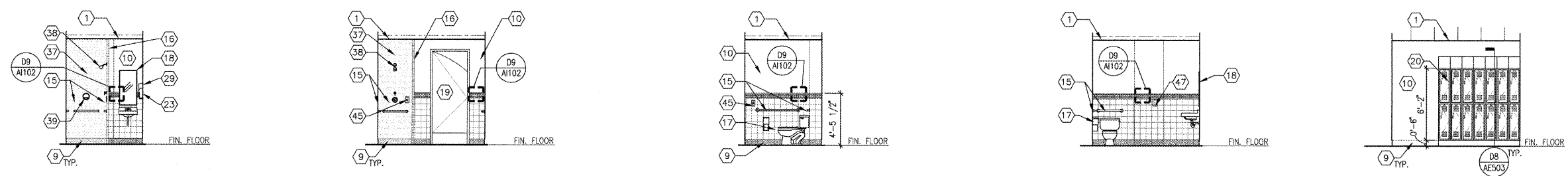


GENERAL SHEET NOTES

- A. REFER TO FINISH SCHEDULE FOR FINISH MATERIAL COLOR, SIZE AND LOCATION.
- SHEET NOTES (#)

1. CENTER REFER TO RCP PLAN FOR HEIGHT
- RESIN PANEL WITH ALUM. FRAME-REFER TO FINISH SCHEDULE
3. BUILT-IN CASEWORK
4. BED (FLOOR MOUNTED)
5. NURSE CALL BUTTON
6. OPEN SHELVING WARDROBE
7. LIGHT FIXTURE-REFER TO RCP PLANS & ELEC. DRAWINGS
8. WALL TRIM PAINTED WITH P-1
9. WALL BASE-REFER TO FINISH SCHEDULE
10. WALL PAINTED-REFER TO FINISH SCHEDULE
11. CERAMIC WALL TILE CT-1, REFER TO FINISH SCHEDULE
12. CERAMIC WALL TILE CT-3 OR CT-4, REFER TO FINISH SCHEDULE
13. CERAMIC WALL TILE CT-5-REFER TO FINISH SCHEDULE
14. EXISTING STRUCTURE ABOVE
15. STAINLESS STEEL GRAB BARS
16. CERAMIC TRIM (CT-6)-REFER TO F3/A401, TYPICAL
17. TOILET TISSUE DISPENSER
18. STAINLESS STEEL FRAMED SAFETY GLASS MIRROR
19. DOOR-REFER TO DOOR SCHEDULE
20. DOUBLE TIER METAL LOCKERS
21. CURTAIN WALL WINDOW SYSTEM
22. WASH AND DRYER-REFER TO EQUIPMENT PLAN
23. HAND SOAP CONTAINER
24. CORNER GUARD-REFER TO FIN. SCHEDULE
25. PSYCHIATRIC HANDRAIL-REFER TO FIN. SCHEDULE (TYP.)
26. PSYCHIATRIC CRASH RAIL-REFER TO FIN. SCHEDULE (TYP.)
27. NURSE STATION CASEWORK
28. GYPSUM BOARD BULKHEAD
29. RECESSED PAPER TOWEL DISPENSER
30. SOLID SURFACE COUNTERTOP
31. PLASTIC LAMINATE ON PLYWOOD-REFER TO FINISH SCHEDULE
32. EXISTING EXPANSION JOINT
33. TACKBOARD/MARKERBOARD
34. WALL MOUNTED CLOCK
35. TABLE MOUNTED EXAM LIGHT-REFER TO ELEC. DRAWINGS
36. EXAM TABLE
37. SOLID WALL SURFACE MATERIAL-REFER TO FIN. SCHEDULE
38. SHOWER FIXTURE-REFER TO PLUMBING DRAWINGS
39. RECESSED SOAP DISPENSER
40. KEYED SWITCHES
41. CARD READER/KEYPAD
42. FIRE EXTINGUISHER CABINET
43. ELECTRIC WATER COOLER
44. ELECTRICAL RECEPTACLE-SEE ELEC. DRAWINGS
45. NURSE CALL DEVICE-SEE ELEC. DRAWINGS
46. DATA/VOICE RECEPTACLE-SEE ELEC. DRAWINGS
47. LIGHT SWITCH-SEE ELEC. DRAWINGS



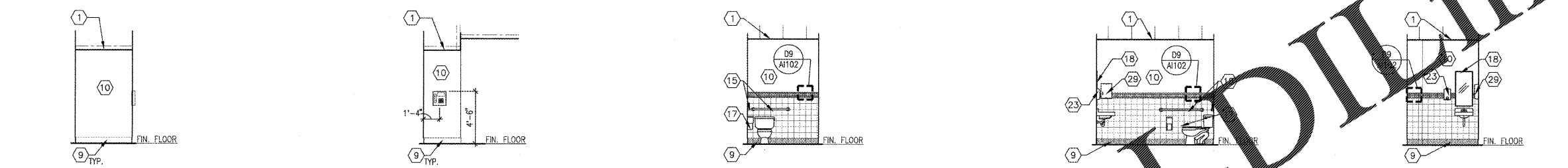
A1 INTERIOR ELEVATION AT "F" WING-TRIAGE RESTROOM SCALE: 1/4" = 1'-0"

A3 INTERIOR ELEVATION AT "F" WING-TRIAGE RESTROOM SCALE: 1/4" = 1'-0"

A5 INTERIOR ELEVATION AT "F" WING-TRIAGE RESTROOM SCALE: 1/4" = 1'-0"

A7 INTERIOR ELEVATION AT "F" WING-TRIAGE RESTROOM SCALE: 1/4" = 1'-0"

A9 INTERIOR ELEVATION AT LOCKER ROOM-TYP. SCALE: 1/4" = 1'-0"



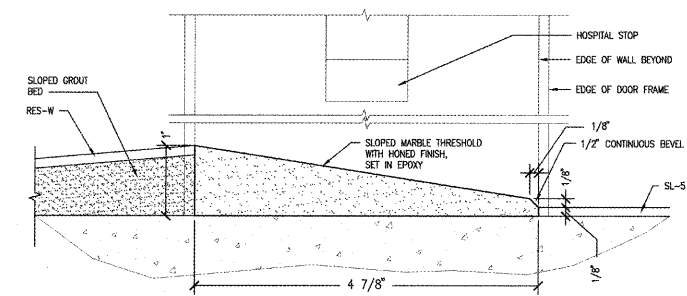
C1 INTERIOR ELEVATION AT PHONE BOOTH SCALE: 1/4" = 1'-0"

C3 INTERIOR ELEVATION AT PHONE BOOTH SCALE: 1/4" = 1'-0"

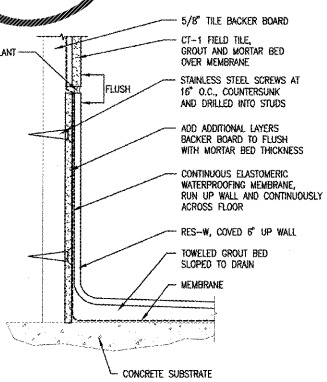
C5 INTERIOR ELEVATION AT STAFF UNISEX TOILET SCALE: 1/4" = 1'-0"

C7 INTERIOR ELEVATION AT STAFF UNISEX TOILET SCALE: 1/4" = 1'-0"

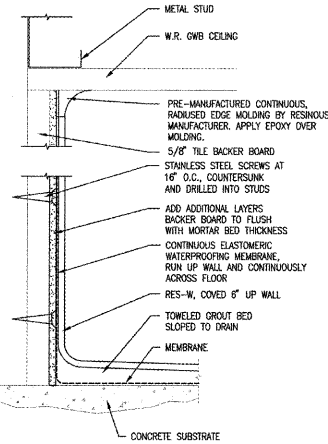
C9 INTERIOR ELEVATION AT STAFF UNISEX TOILET SCALE: 1/4" = 1'-0"



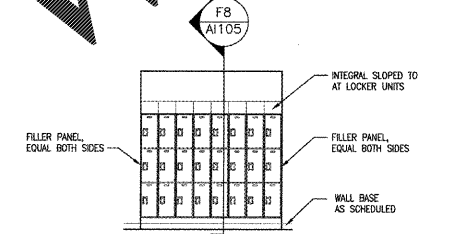
D1 MARBLE THRESHOLD DETAIL AT BATHROOM ENTRANCES SCALE: FULL



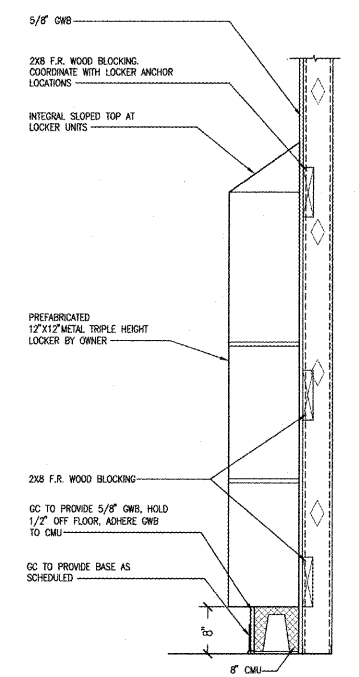
F4 SECTION AT BATHROOM FLOOR/WALL INTERSECTION SCALE: 6" = 1'-0"



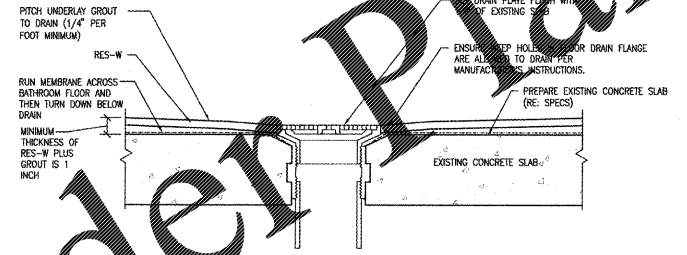
F6 SECTION AT SHOWER FLOOR/WALL INTERSECTION SCALE: 6" = 1'-0"



D7 LOCKER ELEVATION SCALE: 1/4" = 1'-0"



F8 LOCKER SECTION SCALE: 1" = 1'-0"



F5 BATHROOM FLOOR DRAIN DETAIL (TYP.) SCALE: 3" = 1'-0"

REVISION	DESCRIPTION	DATE

Department of Veterans Affairs
 Charlie Norwood
 VA Medical Center
 1 Freedom Way
 Augusta, Ga. 30904

Architect/Engineer Address
 Harrell, Saltrick & Hopper
 Design & Management Solutions for the Built Environment
 8016 TOWER POINT DRIVE
 CHARLOTTE, NC 28227
 WWW.HSH-PC.COM
 P 704.914.1300
 F 704.203.0833
 COPYRIGHT © 2012 HARRELL, SALTRICK & HOPPER, PC
 HSH PROJECT # 12010

Recommended Approvals:	
1. MEDICAL CENTER DIRECTOR	6. OPERATIONS SERVICE LINE MANAGER
2. ASSISTANT DIRECTOR	7. INFECTION CONTROL MANAGER
3. CHIEF OF STAFF	8. SAFETY MANAGER
4. ASSOC. DIRECTOR	9. GENERAL ENGINEER
5. SERVICE LINE MGRS.	10. COR

Drawing Title INTERIOR ARCHITECTURAL ELEVATIONS	100% CONSTRUCTION DOCUMENTS
FULLY SPRINKLERED	

Project Title RENOVATE MENTAL HEALTH UNITS	Building Number	AutoCAD File Name
Drawn BWS III		
Checked	Reviewed	Const. Contract No.

Date February 10, 2017	Project Number 509-12-104
DRAWING No. AI105	

