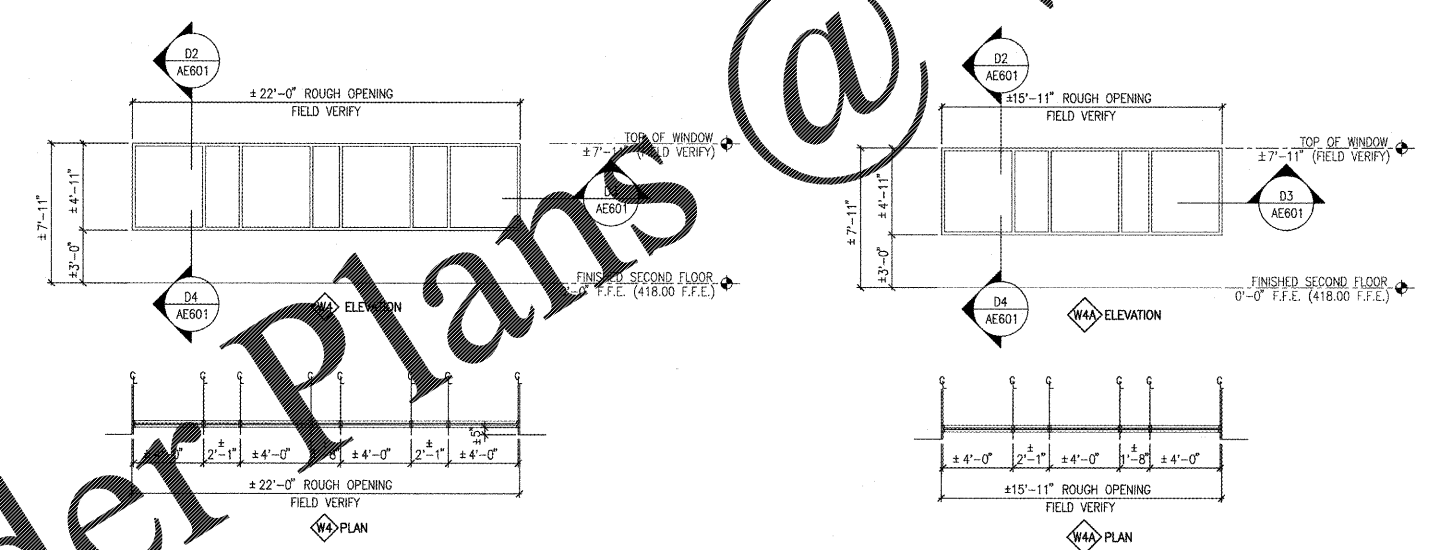
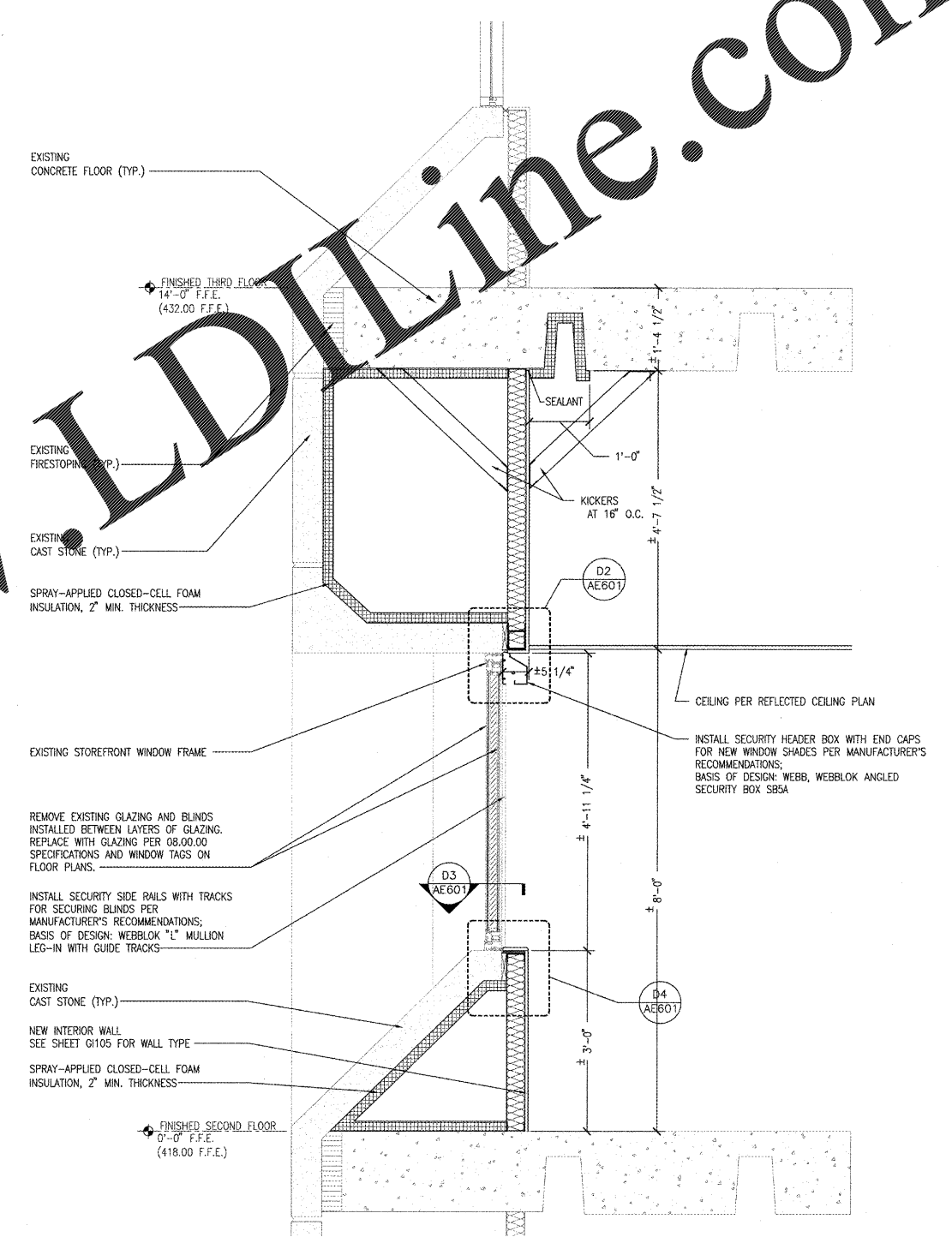


three inches = one foot
 one and one half inches = one foot
 one inch = one foot
 three quarters inch = one foot
 one half inch = one foot
 three eighths inch = one foot
 one eighth inch = one foot
 one quarter inch = one foot
 one eighth inch = one foot



EXISTING & NEW WINDOW PLAN AND ELEVATIONS
 SCALE: 1/4" = 1'-0"



EXISTING WINDOW SECTION
 SCALE: 1" = 1'-0"

REVISION	REVISION DESCRIPTION	DATE

Department of Veterans Affairs
Charlie Norwood
VA Medical Center
1 Freedom Way
Augusta, Ga. 30904

Architect/Engineer Address

Harrell, Saltrick & Hopper
 Design & Management Solutions for the Built Environment
 2016 TOWER POINT DRIVE CHARLOTTE, NC 28227
 WWW.HSHPC.COM P 704.814.1330 F 704.321.0833
 COPYRIGHT © 2012 HARRELL, SALTRICK & HOPPER, PC HIGH PROJECT # 12015

Recommended Approvals:	
1. MEDICAL CENTER DIRECTOR	6. OPERATIONS SERVICE LINE MANAGER
2. ASSISTANT DIRECTOR	7. INFECTION CONTROL MANAGER
3. CHIEF OF STAFF	8. SAFETY MANAGER
4. ASSOC. DIRECTOR	9. GENERAL ENGINEER
5. SERVICE LINE MGRS.	10. COR

Drawing Title "F" WING EXISTING AND NEW EXTERIOR ELEVATIONS		Project Title RENOVATE MENTAL HEALTH UNITS	
100% CONSTRUCTION DOCUMENTS		Building Number	AutoCAD File Name
FULLY SPRINKLERED		Checked	Reviewed

Date February 10, 2017	Project Number 509-12-104
DRAWING No. AE201	

