

GENERAL SHEET NOTES		RCP PLAN SYMBOLS	
A.	VARIATIONS FROM THE REFLECTED CEILING PLAN, IN THE LOCATION OF LIGHT FIXTURES, EXIT SIGNS, OR ANY OTHER CEILING MOUNTED DEVICE MUST BE CALLED TO THE ATTENTION OF, AND APPROVED BY THE COR.		2'x4' FLUORESCENT LIGHT FIXTURE (CRITICAL CIRCUIT; SEE ELEC. FOR MORE INFO.)
B.	ALL CEILINGS ARE 9'-0" A.F.F. UNLESS OTHERWISE NOTED.		2'x4' FLUORESCENT LIGHT FIXTURE (LIFE SAFETY CIRCUIT; SEE ELEC. FOR MORE INFO.)
C.	REFER TO SHEET AE107a; ROOMS 2F207 AND 2F210, 2F274 AND 2F277 FOR TYPICAL CEILING DEVICE LAYOUTS AT ALL SINGLE AND DOUBLE ROOMS.		2'x4' FLUORESCENT LIGHT FIXTURE (NORMAL CIRCUIT; SEE ELEC. FOR MORE INFO.)
			2'x2' FLUORESCENT LIGHT FIXTURE (CRITICAL CIRCUIT; SEE ELEC. FOR MORE INFO.)
			2'x2' FLUORESCENT LIGHT FIXTURE (LIFE SAFETY CIRCUIT; SEE ELEC. FOR MORE INFO.)
			2'x2' FLUORESCENT LIGHT FIXTURE (NORMAL CIRCUIT; SEE ELEC. FOR MORE INFO.)
			RECESSED DOWN LIGHT FIXTURE (NORMAL CIRCUIT; SEE ELEC. FOR MORE INFO.)
			RECESSED DOWN LIGHT / NIGHT LIGHT FIXTURE (CRITICAL CIRCUIT; SEE ELEC. FOR MORE INFO.)
			OCCUPANCY SENSOR (SEE ELEC. FOR MORE INFO.)
			EXIT SIGN
			2X2 LAY-IN ACOUSTICAL CEILING TILE
			2X2 LAY-IN ACOUSTICAL CEILING TILE WITH SPECIAL FACE
			GYPSUM BOARD CEILING
			GYPSUM BOARD SOFFIT
			SMOKE DETECTOR
			HVAC RETURN AIR GRILLE (SEE MECH. FOR MORE INFO.)
			HVAC SUPPLY AIR DIFFUSER (SEE MECH. FOR MORE INFO.)
			HVAC EXHAUST GRILLE; MOUNTED IN 2'x2' METAL FRAME (SEE MECH. FOR MORE INFO.)
			2' x 2' ACCESS PANEL (SEE MECH. FOR MORE INFO.)
			18' x 18' ACCESS PANEL (SEE PLUMB. FOR MORE INFO.)
			NURSE CALL SYSTEM CEILING MOUNTED DOME LIGHT (SEE ELEC. FOR MORE INFO.)
			SECURITY SYSTEM CLOSED CIRCUIT TELEVISION CAMERA (SEE ELEC. FOR MORE INFO.)
			ADDRESSABLE RECEIVER UNIT
			DOOR LIGHT

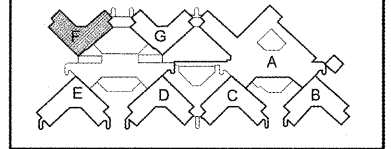
**SHEET KEYNOTES** #

1. CEILING EXPANSION JOINT, SEE E4/AE502.

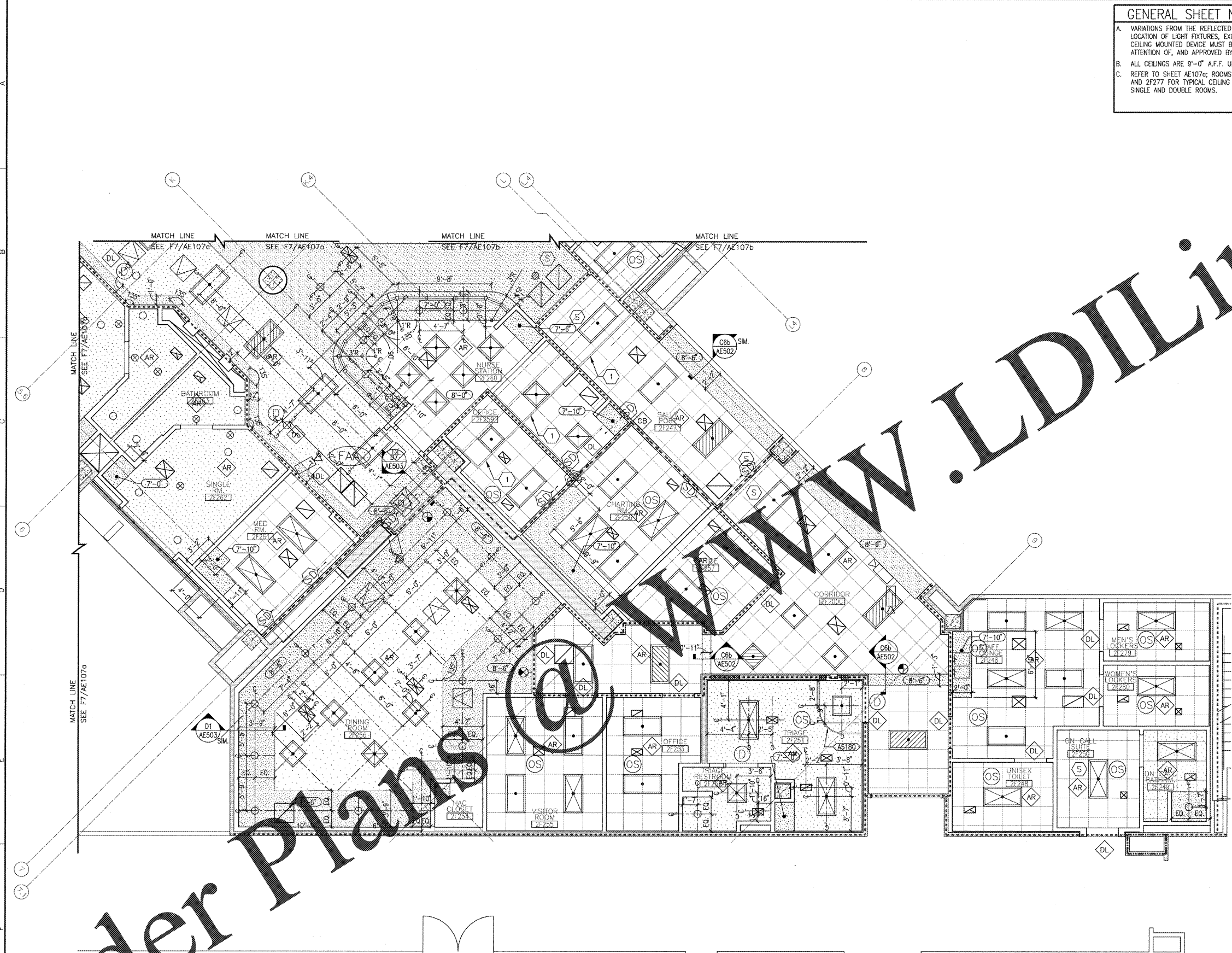
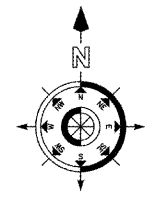
**SYMBOLS LEGEND**

	EXISTING WALL, DOOR, WINDOW, MILLWORK, FIXTURE OR OTHER FIXTURE OR ASSEMBLY TO BE REMOVED.
	EXISTING WALL, DOOR, WINDOW, MILLWORK, FIXTURE OR OTHER FIXTURE OR ASSEMBLY TO REMAIN.
	NEW WALL
	SMOKE TIGHT WALL
	2-HOUR FIRE / SMOKE RATED WALL
	1 HOUR FIRE RATED WALL
	1 HOUR SMOKE BARRIER WALL
	PROJECT LIMITS OF WORK
	NO PIPING OR DUCTWORK SHALL BE ROUTED THROUGH ELECTRICAL AND/OR DATA ROOMS.
	EXISTING CONCRETE COLUMN

**KEY PLAN**

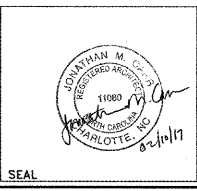


"F" WING SECOND FLOOR PARTIAL ARCHITECTURAL REFLECTED CEILING PLAN  
 SCALE: 1/4" = 1'-0"



REVISION	DESCRIPTION	DATE

**Department of Veterans Affairs**  
 Charlie Norwood  
 VA Medical Center  
 1 Freedom Way  
 Augusta, Ga. 30904



Architect/Engineer Address  
**Harrell, Saltrick & Hopper**  
 Design & Management Solutions for the Built Environment  
 2016 TOMER POINT DRIVE, CHARLOTTE, NC 28227  
 P 704.914.1300 F 704.321.0633  
 WWW.HSH.COM  
 COPYRIGHT © 2012 HARRELL, SALTRICK & HOPPER, PC  
 MSR PROJECT # 1205

Recommended Approvals:	
1. MEDICAL CENTER DIRECTOR	6. OPERATIONS SERVICE LINE MANAGER
2. ASSISTANT DIRECTOR	7. INFECTION CONTROL MANAGER
3. CHIEF OF STAFF	8. SAFETY MANAGER
4. ASSOC. DIRECTOR	9. GENERAL ENGINEER
5. SERVICE LINE MGRS.	10. COR

Drawing Title "F" WING PARTIAL ARCHITECTURAL REFLECTED CEILING PLAN
100% CONSTRUCTION DOCUMENTS
FULLY SPRINKLERED

Project Title RENOVATE MENTAL HEALTH UNITS
Drawn BWS III
Checked
Building Number
Reviewed
AutoCAD File Name
Const. Contract No.

Date February 10, 2017
Project Number 509-12-104
DRAWING No. AE107c

