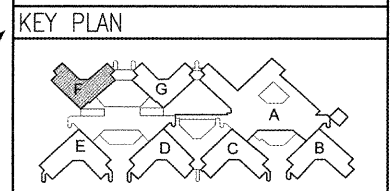


GENERAL SHEET NOTES		RCP PLAN SYMBOLS	
A.	VARIATIONS FROM THE REFLECTED CEILING PLAN, IN THE LOCATION OF LIGHT FIXTURES, EXIT SIGNS, OR ANY OTHER CEILING MOUNTED DEVICE MUST BE CALLED TO THE ATTENTION OF, AND APPROVED BY THE COR.		2'x4' FLUORESCENT LIGHT FIXTURE (CRITICAL CIRCUIT; SEE ELEC. FOR MORE INFO.)
B.	ALL CEILINGS ARE 9'-0" A.F.F. UNLESS OTHERWISE NOTED.		2'x4' FLUORESCENT LIGHT FIXTURE (LIFE SAFETY CIRCUIT; SEE ELEC. FOR MORE INFO.)
C.	REFER TO SHEET AE107a; ROOMS 2F207 AND 2F210, 2F274 AND 2F277 FOR TYPICAL CEILING DEVICE LAYOUTS AT ALL SINGLE AND DOUBLE ROOMS.		2'x4' FLUORESCENT LIGHT FIXTURE (NORMAL CIRCUIT; SEE ELEC. FOR MORE INFO.)
			2'x2' FLUORESCENT LIGHT FIXTURE (CRITICAL CIRCUIT; SEE ELEC. FOR MORE INFO.)
			2'x2' FLUORESCENT LIGHT FIXTURE (LIFE SAFETY CIRCUIT; SEE ELEC. FOR MORE INFO.)
			2'x2' FLUORESCENT LIGHT FIXTURE (NORMAL CIRCUIT; SEE ELEC. FOR MORE INFO.)
			RECESSED DOWN LIGHT FIXTURE (NORMAL CIRCUIT; SEE ELEC. FOR MORE INFO.)
			RECESSED DOWN LIGHT / NIGHT LIGHT FIXTURE (CRITICAL CIRCUIT; SEE ELEC. FOR MORE INFO.)
			OCCUPANCY SENSOR (SEE ELEC. FOR MORE INFO.)
			EXIT SIGN
			2X2 LAY-IN ACOUSTICAL CEILING TILE
			2X2 LAY-IN ACOUSTICAL CEILING TILE WITH SPECIAL FACE
			GYPSUM BOARD CEILING
			GYPSUM BOARD SOFFIT
			SMOKE DETECTOR
			HVAC RETURN AIR GRILLE (SEE MECH. FOR MORE INFO.)
			HVAC SUPPLY AIR DIFFUSER (SEE MECH. FOR MORE INFO.)
			HVAC EXHAUST GRILLE; MOUNTED IN 24"X24" METAL FRAME (SEE MECH. FOR MORE INFO.)
			2' x 2' ACCESS PANEL (SEE MECH. FOR MORE INFO.)
			18' x 18' ACCESS PANEL (SEE PLUMB. FOR MORE INFO.)
			NURSE CALL SYSTEM CEILING MOUNTED DOME LIGHT (SEE ELEC. FOR MORE INFO.)
			SECURITY SYSTEM CLOSED CIRCUIT TELEVISION CAMERA (SEE ELEC. FOR MORE INFO.)
			CONTROL JOINT
			ADDRESSABLE RECEIVER UNIT
			DOOR LIGHT

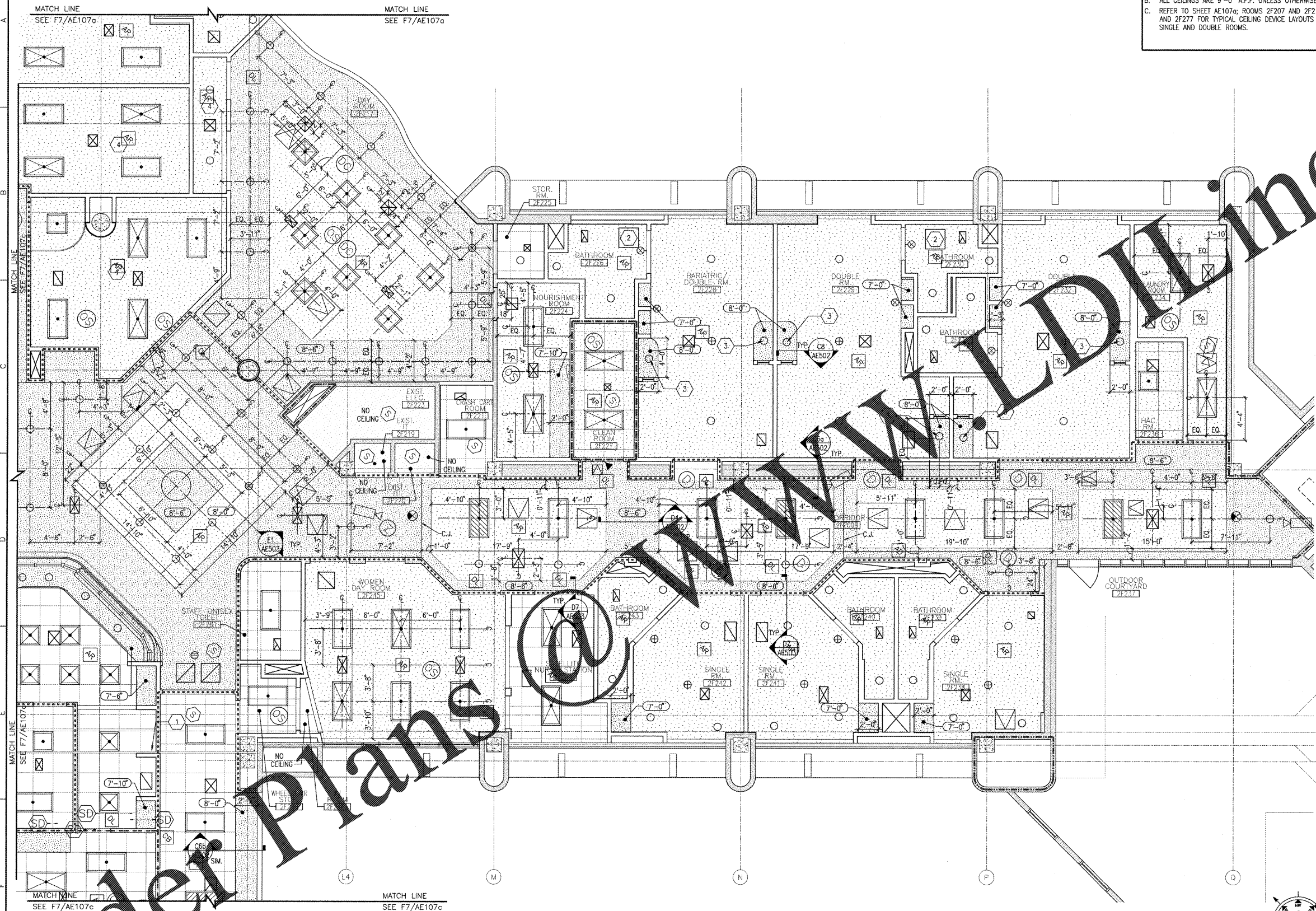
- SHEET KEYNOTES**
1. CEILING EXPANSION JOINT, SEE E4/AE502.
 2. RADIANT HEATING PANELS, SEE MECHANICAL DRAWINGS FOR LOCATION AND ADDITIONAL INFORMATION.
 3. LIGHT TO BE CENTERED IN SOFFIT IN ALL DOUBLE BEDROOMS. (TYP.)
 4. SEE MATCH SHEET FOR LIGHTING LAYOUT.

SYMBOLS LEGEND

	EXISTING WALL, DOOR, WINDOW, MILLWORK, FIXTURE OR OTHER FIXTURE OR ASSEMBLY TO BE REMOVED.
	EXISTING WALL, DOOR, WINDOW, MILLWORK, FIXTURE OR OTHER FIXTURE OR ASSEMBLY TO REMAIN.
	NEW WALL
	SMOKE TIGHT WALL
	2-HOUR FIRE/ SMOKE RATED WALL
	1 HOUR FIRE RATED WALL
	1 HOUR SMOKE BARRIER WALL
	PROJECT LIMITS OF WORK
	NO PIPING OR DUCTWORK SHALL BE ROUTED THROUGH ELECTRICAL AND/OR DATA ROOMS.
	EXISTING CONCRETE COLUMN

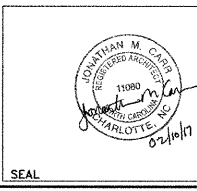


"F" WING SECOND FLOOR PARTIAL ARCHITECTURAL REFLECTED CEILING PLAN
 SCALE: 1/4" = 1'-0"



REVISION	DESCRIPTION	DATE

Department of Veterans Affairs
 Charlie Norwood
 VA Medical Center
 1 Freedom Way
 Augusta, Ga. 30904



Architect/Engineer Address
Harrell, Saltrick & Hopper
 Design & Management Solutions for the Built Environment
 6016 TOWER POINT DRIVE
 CHARLOTTE, NC 28227
 WWW.HSHPC.COM
 P 704.814.1330
 F 704.521.0833
 COPYRIGHT © 2012 HARRELL, SALTRICK & HOPPER, PC
 HIGH PROJECT # 12005

Recommended Approvals:

1. MEDICAL CENTER DIRECTOR	6. OPERATIONS SERVICE LINE MANAGER
2. ASSISTANT DIRECTOR	7. INFECTION CONTROL MANAGER
3. CHIEF OF STAFF	8. SAFETY MANAGER
4. ASSOC. DIRECTOR	9. GENERAL ENGINEER
5. SERVICE LINE MGRS.	10. COR

Drawing Title
"F" WING PARTIAL ARCHITECTURAL REFLECTED CEILING PLAN

100%
 CONSTRUCTION DOCUMENTS

FULLY SPRINKLERED

Project Title
RENOVATE MENTAL HEALTH UNITS

Drawn: EWS:ll
 Checked: []

Building Number: []
 Reviewed: []

AutoCAD File Name: []
 Const. Contract No.: []

Date
 February 10, 2017

Project Number
 509-12-104

DRAWING No.
AE107b

