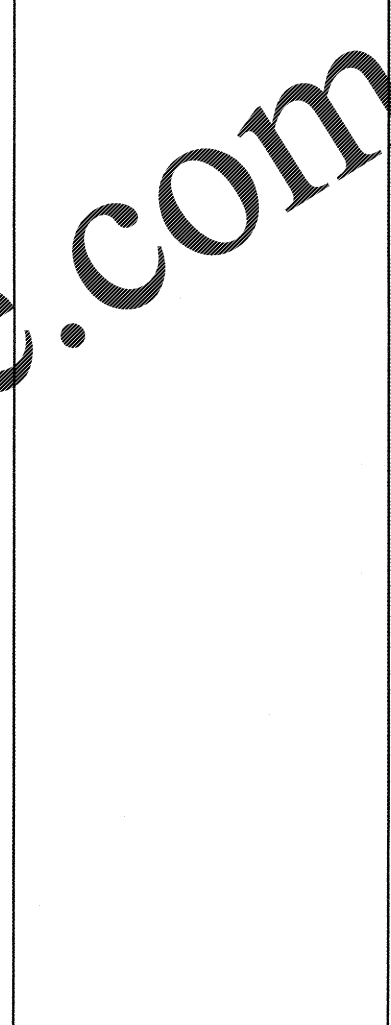


**GENERAL SHEET NOTES**  
 A. SEE SHEET AE004 FOR SIGNAGE SCHEDULE.  
 (N/A) (N/A) (N/A)



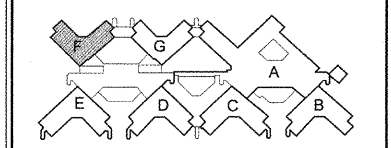
**COORDINATION DRAWINGS**  
 SEE COVER SHEET FOR COORDINATION NOTES.

**"F" WING SECOND FLOOR PARTIAL ARCHITECTURAL EQUIPMENT & SIGNAGE FLOOR PLAN**  
 SCALE: 1/4" = 1'-0"

**SYMBOLS LEGEND**

- EXISTING WALL, DOOR, WINDOW, MILLWORK, FIXTURE OR OTHER FIXTURE OR ASSEMBLY TO BE REMOVED.
- EXISTING WALL, DOOR, WINDOW, MILLWORK, FIXTURE OR OTHER FIXTURE OR ASSEMBLY TO REMAIN.
- NEW WALL
- SMOKE TIGHT WALL
- 2-HOUR FIRE/ SMOKE RATED WALL
- 1 HOUR FIRE RATED WALL
- 1 HOUR SMOKE BARRIER WALL
- PROJECT LIMITS OF WORK
- NO PIPING OR DUCTWORK SHALL BE ROUTED THROUGH ELECTRICAL AND/OR DATA ROOMS.
- EXISTING CONCRETE COLUMN

**KEY PLAN**



**REVISIONS**

NO.	REVISION DESCRIPTION	DATE

**Department of Veterans Affairs**  
**Charlie Norwood**  
**VA Medical Center**  
**1 Freedom Way**  
**Augusta, Ga. 30904**

**Architect/Engineer Address**  
**Harrell, Saltrick & Hopper**  
 Design & Management Solutions for the Built Environment  
 2016 TOWER POINT DRIVE CHARLOTTE, NC 28227  
 WWW.HSHPC.COM  
 COPYRIGHT © 2012 HARRELL, SALTRICK & HOPPER, P.C.  
 HSH PROJECT # 12015

**Recommended Approvals:**

1. MEDICAL CENTER DIRECTOR	6. OPERATIONS SERVICE LINE MANAGER
2. ASSISTANT DIRECTOR	7. INFECTION CONTROL MANAGER
3. CHIEF OF STAFF	8. SAFETY MANAGER
4. ASSOC. DIRECTOR	9. GENERAL ENGINEER
5. SERVICE LINE MGRS.	10. COR

**Drawing Title**  
**"F" WING PARTIAL ARCHITECTURAL EQUIPMENT & SIGNAGE FLOOR PLAN**

**Project Title**  
**RENOVATE MENTAL HEALTH UNITS**

**Date**  
 February 10, 2017

**Project Number**  
 509-12-104

**DRAWING No.**  
**AE105b**

**100% CONSTRUCTION DOCUMENTS**

**FULLY SPRINKLERED**

**Checked** [ ] **Reviewed** [ ] **Const. Contract No.** [ ]

**MENTAL HEALTH EQUIPMENT MATERIAL LIST**

JSN	DESCRIPTION	GOVERNMENT PROVIDE/INSTALL	CONTRACTOR PROVIDE/INSTALL	NOTE	JSN	DESCRIPTION	GOVERNMENT PROVIDE/INSTALL	CONTRACTOR PROVIDE/INSTALL	NOTE	JSN	DESCRIPTION	GOVERNMENT PROVIDE/INSTALL	CONTRACTOR PROVIDE/INSTALL	NOTE
A1012	TELEPHONE, DESK OR WALL MOUNTED, WITH SPEAKER	X	X	1	F0110	BOOKCASE, 3 SHELF	X	X	1	M0510	TV/VCR COMBINATION	X	X	4
A1014	TELEPHONE, WALL MOUNTED, 1 LINE, WITH SPEAKER	X	X	1	F0115	BOOKCASE, OPEN, 5 SHELF	X	X	1	M1100	RESUSCITATOR, BAG-MASK HAND OPERATED	X	X	4
A1015	TELEPHONE, DESK, MULTIPLE LINE	X	X	1	F0205	CHAIR, SIDE WITH ARM	X	X	1	M1110	RESUSCITATOR, BAG-MASK HAND OPERATED, INFANT	X	X	4
A1030	LOCKER, 3 PERSON, OVER/UNDER	X	X	1	F0210	CHAIR, SIDE, WITH ARM	X	X	1	M1605	HOLDER, CHART, CART, HOLDS 20 CHARTS	X	X	2
A1040	LOCKER, 2 PERSON, OVER/UNDER	X	X	1	F0220	CHAIR, CONFERENCE	X	X	1	M1620	HOLDER, CHART, PATIENT, WALL OR DOOR MOUNTED	X	X	4,8
A1066	MIRROR, FLOAT GLASS, WITH SS FRAME, 36x18	X	X	2	F0225	CHAIR, CONFERENCE	X	X	1	M1801	COMPUTER, MICROPROCESSOR, W/ FLAT PANEL MONITOR	X	X	1
A1080	MIRROR, POSTURE, WALL MOUNTED	X	X	2	F0275	CHAIR, SWIVEL, HIGH BACK	X	X	1	M1820	IMPRINTER, DATA RECORD, ELECTRIC	X	X	4
A1132	RAIL, ACCESSORY MOUNTING, LENGTH AS REQUIRED	X	X	2	F0280	CHAIR, SWIVEL, HIGH BACK	X	X	1	M1840	PRINTER/ COPIER/ FAX COMBINATION	X	X	4
A5025	BENCH, LOCKER ROOM, PORTABLE	X	X	1	F0300	STOCK, SELF ADJUSTING	X	X	1	M2025	RACK, STORAGE, CYLINDER GAS	X	X	1
A5075	DISPENSER, SOAP, DISPOSABLE	X	X	1	F0305	SOFA, COLLECTOR	X	X	1	M2055	SHELVING, STORAGE, WIRE, CRS, W/ADJUSTABLE SHELVES	X	X	2
A5080	DISPENSER, PAPER TOWEL, SS, SURFACE MOUNTED	X	X	1	F0400	CABINET, W/DOOR, DRAWER	X	X	1	M2115	TRUCK, HAND, 2 WHEEL	X	X	1
A5106	WASTE DISPOSAL UNIT, SHARPS W/ GLOVE DISPENSER	X	X	2	F0420	CABINET, W/DOOR, DRAWER	X	X	1	M2300	WASHER, CLOTHES, AUTOMATIC	X	X	1
A5135	SHELF, UTILITY W/ MOP/BROOM HOLDERS, SS, SURF MTD	X	X	2	F500	JANITOR'S	X	X	1	M2400	DRYER, CLOTHES, AUTOMATIC, ELECTRIC, HOUSEHOLD	X	X	1
A5145	HOOK, GARMENT, DOUBLE, SS, SURFACE MOUNTED	X	X	1	F0755	BUCKET, MOP, WITH WRINGER, 26 QUART	X	X	1	M3072	FRAME, INFECTIOUS WASTE BAG W/ LID	X	X	1
A5180	TRACK, CUBICLE, SURFACE MOUNTED, WITH CURTAIN	X	X	1	F0795	TABLE, CONFERENCE, WOOD	X	X	1	M3150	DISTRIBUTION SYSTEM, MEDICATION, AUTOMATIC	X	X	4
A5215	BRACKET, TELEVISION, CEILING MOUNTED	X	X	1	F0820	TABLE, OFFICE, ROUND	X	X	1	M4100	SPHYGMOMANOMETER, ANEROID, WALL MOUNTED	X	X	1
A8025	MIRROR, SAFETY, CONVEX	X	X	2	F2000	BASKET, WASTEPAPER, ROUND, METAL	X	X	1	M4200	OTOSCOPE/ OPHTHALMOSCOPE, WALL MOUNTED	X	X	1
A6046	ARTWORK, DECORATIVE, WITH FRAME	X	X	1	F2020	CAN, TRASH, 44 GALLON	X	X	1	M4655	STRETCHER, MOBILE, CRS, 9 POSITION	X	X	1
A6330	INTERCOM - ROOM TO ROOM	X	X	4	F2250	CAMERA, PORTABLE, CCTV, WITH RECORDER	X	X	4	M4705	WHEELCHAIR, PATIENT TRANSPORTER, FOLDING	X	X	1
E0078	WORKSTATION, L-SHAPED W/PENINSULA, FREE STANDING	X	X	1	F2405	BED, NON-MEDICAL, SINGLE	X	X	1	M7011	BED, PLATFORM, WITHOUT VISIBLE LEGS, PSYCHIATRIC	X	X	1
E0222	WORKSURFACE, COMPUTER, O/H CAB, 48" WIDE	X	X	1	F2420	LAMP, TABLE, WITH SHADE	X	X	1	M7025	MATTRESS, BED, HOSPITAL	X	X	1
E0851	DISPLAY, TACKBOARD, MARKERBOARD, WALL MOUNTED	X	X	2	F3010	BOARD, BULLETIN, 48x48	X	X	2	M7400	LIGHT, EXAM, TABLE MOUNTED, SPOTLIGHT	X	X	5
E0903	LOCKER, SUPPLY, W/SHOES, WALL MOUNTED, 23" W x 20" D	X	X	2	F3025	BOARD, BULLETIN, WOOD FRAMED, 36x24	X	X	1	M7660	DEFIBRILLATOR/MONITOR/RECORDER, PORTABLE	X	X	1
E0906	LOCKER, SUPPLY, GENERAL PURPOSE, 23" W x 20" D	X	X	2	F3050	WHITEBOARD, DRY ERASE	X	X	2	M7905	OXIMETER, PULSE	X	X	1
E0912	LOCKER, SUPPLY, W/SHOES, WALL MOUNTED, 23" W x 20" D	X	X	2	F3200	CLOCK, BATTERY, 12" DIAMETER	X	X	1	M8000	SHOWER, TROLLEY SYSTEM, COMPLETE	X	X	1
E0921	TRANSPORTER, LOCKER, SUPPLY, 27" W	X	X	1	F3235	RACK, HAT/ COAT, FLOOR STANDING	X	X	1	M8055	BATH, HYDROTHERAPY, FULL BODY	X	X	6
E0948	CART, GENERAL PURPOSE, MOBILE, 12" H x 32" W x 22" D	X	X	4	X1552	BREWER, COFFEE, AUTO, ELECT., 3 BURNER, FRONT/BACK	X	X	6	M8770	ASPIRATOR/PRESSURE UNIT, GENERAL PURPOSE	X	X	1
E1500	CART, GENERAL PURPOSE, MOBILE, 12" H x 32" W x 22" D	X	X	4	K4665	OVEN, MICROWAVE, CONSUMER	X	X	1	M9025	TABLE, EXAMINATION/TREATMENT, WITH CABINET	X	X	5
E1500	CART, GENERAL PURPOSE, MOBILE, 12" H x 32" W x 22" D	X	X	4	K8250	TOASTER, POP-UP, 4 SLICE, ELECTRIC	X	X	1	R4650	ICE MAKER, FLAKED, WITH DISPENSER, 71x19x24	X	X	6
E1500	CART, GENERAL PURPOSE, MOBILE, 12" H x 32" W x 22" D	X	X	4						R6200	REFRIGERATOR, U/C OR F/S, 5 CU FT	X	X	6

**REVISIONS**

NO.	REVISION DESCRIPTION	DATE

**Department of Veterans Affairs**  
**Charlie Norwood**  
**VA Medical Center**  
**1 Freedom Way**  
**Augusta, Ga. 30904**

**Architect/Engineer Address**  
**Harrell, Saltrick & Hopper**  
 Design & Management Solutions for the Built Environment  
 2016 TOWER POINT DRIVE CHARLOTTE, NC 28227  
 WWW.HSHPC.COM  
 COPYRIGHT © 2012 HARRELL, SALTRICK & HOPPER, P.C.  
 HSH PROJECT # 12015

**Recommended Approvals:**

1. MEDICAL CENTER DIRECTOR	6. OPERATIONS SERVICE LINE MANAGER
2. ASSISTANT DIRECTOR	7. INFECTION CONTROL MANAGER
3. CHIEF OF STAFF	8. SAFETY MANAGER
4. ASSOC. DIRECTOR	9. GENERAL ENGINEER
5. SERVICE LINE MGRS.	10. COR

**Drawing Title**  
**"F" WING PARTIAL ARCHITECTURAL EQUIPMENT & SIGNAGE FLOOR PLAN**

**Project Title**  
**RENOVATE MENTAL HEALTH UNITS**

**Date**  
 February 10, 2017

**Project Number**  
 509-12-104

**DRAWING No.**  
**AE105b**

**100% CONSTRUCTION DOCUMENTS**

**FULLY SPRINKLERED**

**Checked** [ ] **Reviewed** [ ] **Const. Contract No.** [ ]

**Department of Veterans Affairs**