

GENERAL SHEET NOTES

- A. SEE SHEET AE601 FOR WINDOW TYPES.
- B. SEE C8/AE201 FOR EXTERIOR WINDOW TYPES.
- C. DIMENSIONS SHOWN ARE FROM FINISHED FACE OF WALL AND WALL DEPTHS ARE NOMINAL. SEE SHEET G105 FOR SPECIFIC WALL TYPES USED AND ACTUAL WALL DEPTHS.

SHEET KEYNOTES

- 1. PREPARE EXISTING INTERIOR FINISH WALL TO RECEIVE NEW LAMINATED DRYWALL OR CEMENT BOARD.

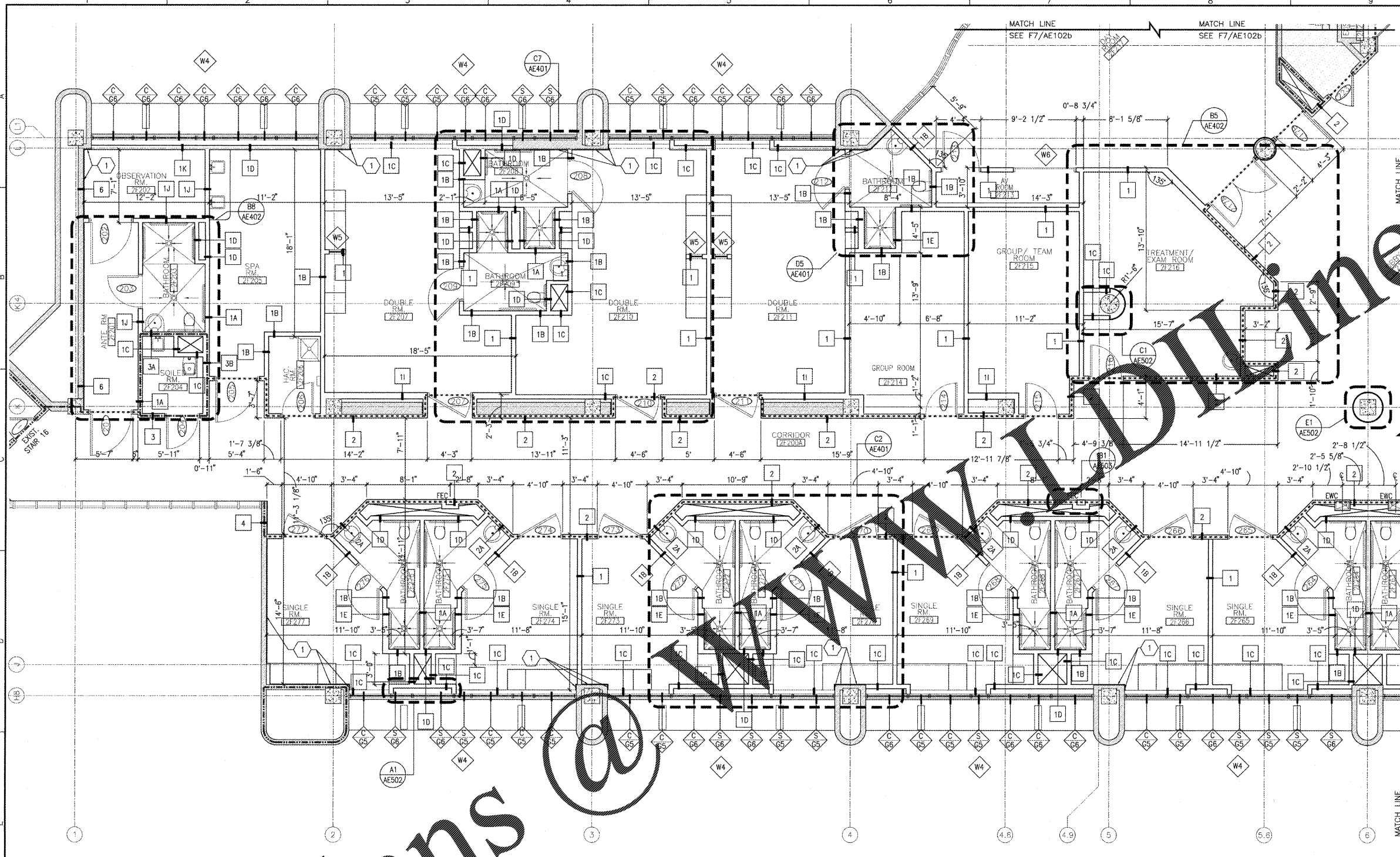
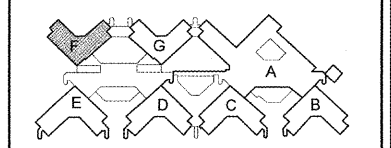
COORDINATION DRAWINGS

- SEE COVER SHEET FOR COORDINATION NOTES.
- C=EXISTING CLEAR GLAZING
- S=EXISTING SPANDREL GLAZING
- SEE 08.00.00 SPEC FOR REPLACEMENT GLAZING SYSTEM

SYMBOLS LEGEND

- EXISTING WALL, DOOR, WINDOW, MILLWORK, FIXTURE OR OTHER FIXTURE OR ASSEMBLY TO BE REMOVED.
- EXISTING WALL, DOOR, WINDOW, MILLWORK, FIXTURE OR OTHER FIXTURE OR ASSEMBLY TO REMAIN.
- NEW WALL
- SMOKE TIGHT WALL
- 2-HOUR FIRE/ SMOKE RATED WALL
- 1 HOUR FIRE RATED WALL
- 1 HOUR SMOKE BARRIER WALL
- PROJECT LIMITS OF WORK
- NO PIPING OR DUCTWORK SHALL BE ROUTED THROUGH ELECTRICAL AND/OR DATA ROOMS.
- EXISTING CONCRETE COLUMN

KEY PLAN



"F" WING SECOND FLOOR PARTIAL ARCHITECTURAL DIMENSION FLOOR PLAN
 SCALE: 1/4" = 1'-0"

REVISION	DESCRIPTION	DATE

Department of Veterans Affairs
Charlie Norwood
 VA Medical Center
 1 Freedom Way
 Augusta, Ga. 30904

Architect/Engineer Address
Harrell, Saltrick & Hopper
 Design & Management Solutions for the Built Environment
 808 TOWER POINT DRIVE P 204.814.1330
 CHARLOTTE, NC 28227 F 704.521.0633
 WWW.HSH-PC.COM
 COPYRIGHT © 2012 HARRELL, SALTRICK & HOPPER, PC
 HSH PROJECT # 12058

Recommended Approvals:

1. MEDICAL CENTER DIRECTOR	6. OPERATIONS SERVICE LINE MANAGER
2. ASSISTANT DIRECTOR	7. INFECTION CONTROL MANAGER
3. CHIEF OF STAFF	8. SAFETY MANAGER
4. ASSOC. DIRECTOR	9. GENERAL ENGINEER
5. SERVICE LINE MGRS.	10. COR

Drawing Title
"F" WING PARTIAL ARCHITECTURAL DIMENSION FLOOR PLAN

100%
 CONSTRUCTION DOCUMENTS

FULLY SPRINKLERED

Project Title
RENOVATE MENTAL HEALTH UNITS

Drawn BWS III
 Checked []
 Building Number []
 Reviewed []

Date
 February 10, 2017

Project Number
 509-12-104

DRAWING No.
AE102a

AutCAD File Name []
 Const. Contract No. []

