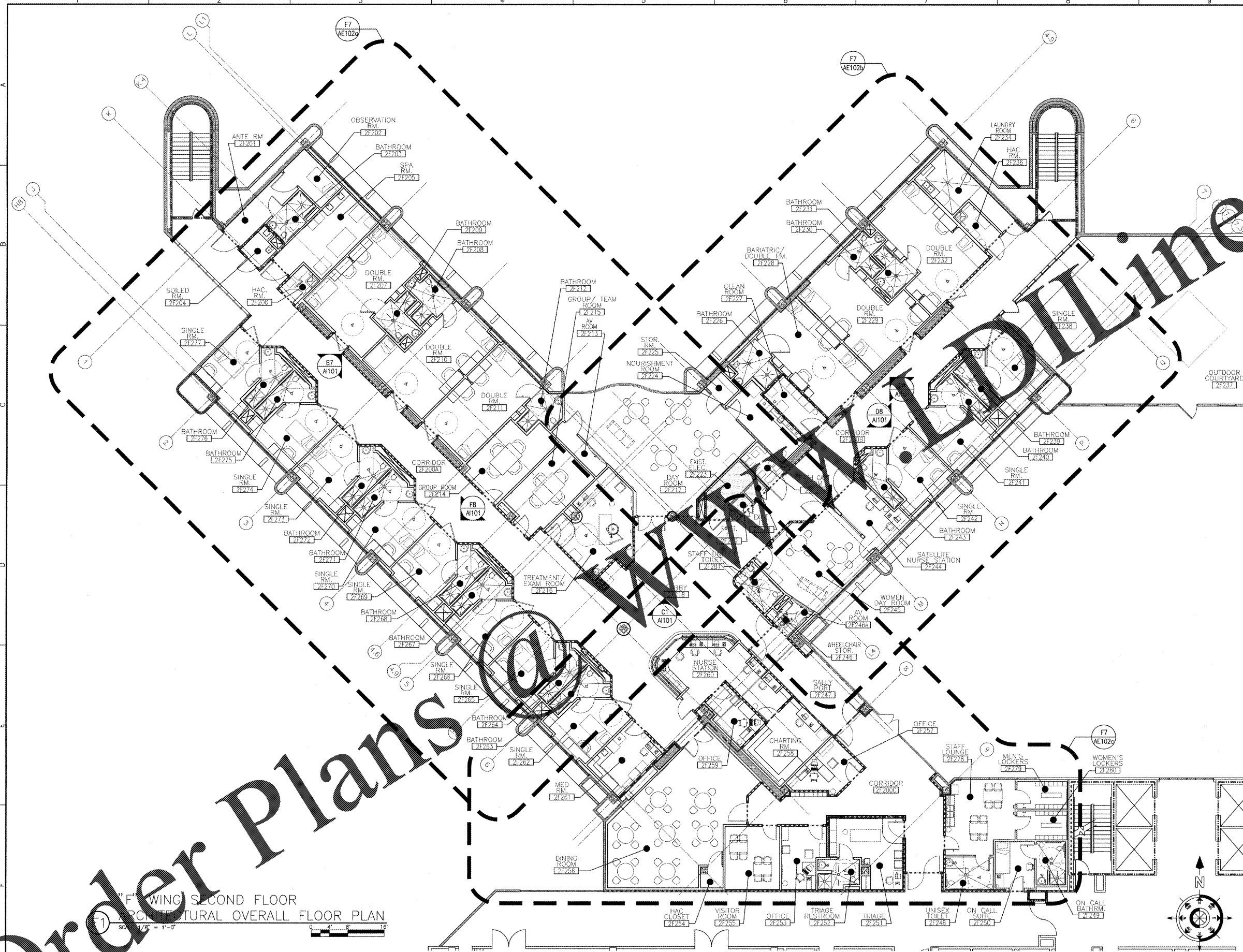


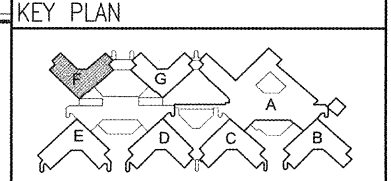
three inches = one foot
 one and one half inches = one foot
 one inch = one foot
 three quarters inch = one foot
 one half inch = one foot
 three eighths inch = one foot
 one eighth inch = one foot
 one quarter inch = one foot
 one eighth inch = one foot



COORDINATION DRAWINGS
 SEE COVER SHEET FOR COORDINATION NOTES.

SYMBOLS LEGEND

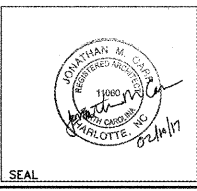
	EXISTING WALL, DOOR, WINDOW, MILLWORK, FIXTURE OR OTHER FIXTURE OR ASSEMBLY TO BE REMOVED
	EXISTING WALL, DOOR, WINDOW, MILLWORK, FIXTURE OR OTHER FIXTURE OR ASSEMBLY TO REMAIN
	NEW WALL
	SMOKE TIGHT WALL
	2-HOUR FIRE / SMOKE RATED WALL
	1 HOUR FIRE RATED WALL
	1 HOUR SMOKE BARRIER WALL
	PROJECT LIMITS OF WORK
	NO PIPING OR DUCTWORK SHALL BE ROUTED THROUGH ELECTRICAL AND/OR DATA ROOMS.
	EXISTING CONCRETE COLUMN



F-WING SECOND FLOOR ARCHITECTURAL OVERALL FLOOR PLAN
 SCALE: 1/8" = 1'-0"

REVISION	DESCRIPTION	DATE

Department of Veterans Affairs
Charlie Norwood
 VA Medical Center
 1 Freedom Way
 Augusta, Ga. 30904



Architect/Engineer Address
Harrell, Saltrick & Hopper
 Design & Management Solutions for the Built Environment
 2016 TOWER POINT DRIVE
 CHARLOTTE, NC 28227
 WWW.HSH-PC.COM
 P 704.814.1330
 F 704.321.0633
 COPYRIGHT © 2012 HARRELL, SALTRICK & HOPPER, PC
 HSH PROJECT # 12015

Recommended Approvals:

1. MEDICAL CENTER DIRECTOR	6. OPERATIONS SERVICE LINE MANAGER
2. ASSISTANT DIRECTOR	7. INFECTION CONTROL MANAGER
3. CHIEF OF STAFF	8. SAFETY MANAGER
4. ASSOC. DIRECTOR	9. GENERAL ENGINEER
5. SERVICE LINE MGRS.	10. COR

Drawing Title
F-WING ARCHITECTURAL OVERALL FLOOR PLAN
 100%
 CONSTRUCTION DOCUMENTS
 FULLY SPRINKLERED

Project Title
RENOVATE MENTAL HEALTH UNITS

Drawn	BWS III	Building Number	
Checked		Reviewed	
AutoCAD File Name		Const. Contract No.	

Date
 February 10, 2017
 Project Number
 509-12-104
 DRAWING No.
AE101

