

IT IS THE CONTRACTOR'S RESPONSIBILITY TO PROVIDE THE FOLLOWING INFECTION CONTROL PRECAUTIONS DEPENDING UPON THE AREA CLASS DESIGNATION

IT IS THE CONTRACTOR'S RESPONSIBILITY TO PROVIDE THE FOLLOWING INFECTION CONTROL PRECAUTIONS DEPENDING UPON THE AREA CLASS DESIGNATION

PATIENT RISK GROUP TABLE

GROUP 1—LOW RISK OFFICE AREAS (NON-CLINICAL)	GROUP 2—MEDIUM RISK	GROUP 3—HIGH RISK	GROUP 4—HIGHEST RISK
<ul style="list-style-type: none"> CARDIOLOGY ECHOCARDIOLOGY ENDOSCOPY--GI PHYSICAL THERAPY RADIOLOGY/MRI NUCLEAR MEDICINE RESPIRATORY CARE (EXCEPT BRONCHOSCOPY AREA) CAFETERIA OUTPATIENT AREAS--CLINICS AND OFFICES (EXCEPTION: TRANSPLANT AND ONCOLOGY) 	<ul style="list-style-type: none"> EMERGENCY ROOM POST ANESTHESIA CARE UNITS LABOR AND DELIVERY PEDIATRICS ADMISSION/DISCHARGE AREA LABORATORIES PHARMACY INPATIENT UNITS (NOT OTHERWISE SPECIFIED) 	<ul style="list-style-type: none"> ALL OPERATING ROOMS INCLUDING LABOR AND DELIVERY ANESTHESIA AND PUMP AREAS CENTRAL EQUIPMENT/STERILE SUPPLY CARDIAC CATHETERIZATION AND ANGIOGRAPHY AREAS INTERVENTIONAL RADIOLOGY RADIATION ONCOLOGY ALL INTENSIVE CARE UNITS NEWBORN NURSERY (INCLUDING NICU) DIALYSIS UNIT ONCOLOGY--INPATIENT AND OUTPATIENT INPATIENT UNIT--INPATIENT AND OUTPATIENT PHARMACY MIXTURE NEGATIVE PRESSURE ISOLATION ROOMS AREAS (INCLUDING BRONCHOSCOPY AREA) 	

DURING CONSTRUCTION PROJECT

CLASS I	UPON COMPLETION OF PROJECT
<ol style="list-style-type: none"> EXECUTE WORK BY METHODS TO MINIMIZE RAISING DUST FROM CONSTRUCTION OPERATIONS. IMMEDIATELY REPLACE A CEILING TILE DISPLACED FOR VISUAL INSPECTION. 	<ol style="list-style-type: none"> WIPE SURFACES TO REMOVE DUST.
<ol style="list-style-type: none"> INCLUDES ALL ACTIVITIES REQUIRED BY CLASS I. PROVIDE ACTIVE MEANS TO PREVENT AIRBORNE DUST FROM DISPERSING INTO ATMOSPHERE. WATER MIST WORK SURFACES TO CONTROL DUST WHILE CUTTING. SEAL UNUSED DOORS WITH DUCT TAPE. BLOCK OFF AND SEAL AIR VENTS. REPLACE ADHESIVE WALK-OFF MATS AT ENTRANCE AND EXIT OF WORK AREA. REPLACE USED MATS IN ACCORDANCE WITH MANUFACTURER'S RECOMMENDATIONS. REMOVE OR ISOLATE HVAC SYSTEM IN AREAS WHERE WORK IS BEING DONE TO PREVENT CONTAMINATION OF DUCT SYSTEM. 	<ol style="list-style-type: none"> WIPE WORK SURFACES WITH DISINFECTANT. CONTAIN CONSTRUCTION WASTE BEFORE TRANSPORT IN TIGHTLY COVERED CONTAINERS. WET MOP AND/OR VACUUM WORK AREA WITH HEPA FILTERED VACUUM BEFORE LEAVING WORK AREAS. REMOVE ISOLATION OF HVAC SYSTEM IN AREAS WHERE WORK IS BEING PERFORMED.
<ol style="list-style-type: none"> INCLUDES ALL ACTIVITIES REQUIRED BY CLASS II. OBTAIN INFECTION CONTROL PERMIT FROM HOSPITAL SAFETY OFFICER OR FACILITIES MANAGEMENT MAINTENANCE AND ENGINEERING DEPARTMENT BEFORE CONSTRUCTION BEGINS. REMOVE OR ISOLATE HVAC SYSTEM IN AREA WHERE WORK IS BEING DONE TO PREVENT CONTAMINATION OF DUCT SYSTEM. COMPLETE ALL CRITICAL BARRIERS BEFORE CONSTRUCTION BEGINS OR IMPLEMENT CONTROL CUBE METHOD. MAINTAIN NEGATIVE AIR PRESSURE WITHIN WORK SITE UTILIZING HEPA-EQUIPPED AIR FILTRATION UNITS. CONTAIN CONSTRUCTION WASTE BEFORE TRANSPORT IN TIGHTLY COVERED CONTAINERS. COVER TRANSPORT RECEPTACLES OR CARS. TAPE COVERS. WET MOP AND/OR VACUUM WITH HEPA FILTERED VACUUM BEFORE LEAVING WORK AREAS. REMOVE ISOLATION OF HVAC SYSTEM IN AREAS WHERE WORK IS BEING PERFORMED. 	<ol style="list-style-type: none"> REMOVE BARRIER MATERIALS CAREFULLY TO MINIMIZE SPREADING OF DIRT AND DEBRIS ASSOCIATED WITH CONSTRUCTION. CONTAIN CONSTRUCTION WASTE BEFORE TRANSPORT IN TIGHTLY COVERED CONTAINERS. COVER TRANSPORT RECEPTACLES OR CARS. TAPE COVERING. VACUUM WORK WITH HEPA-FILTERED VACUUMS. WET MOP WITH DISINFECTANT. REMOVE ISOLATION OF HVAC SYSTEM IN AREAS WHERE WORK IS BEING PERFORMED.

DURING CONSTRUCTION PROJECT

CLASS IV	UPON COMPLETION OF PROJECT
<ol style="list-style-type: none"> INCLUDES ALL ACTIVITIES REQUIRED BY CLASS III. OBTAIN INFECTION CONTROL PERMIT FROM HOSPITAL SAFETY OFFICER OR FACILITIES MANAGEMENT MAINTENANCE AND ENGINEERING DEPARTMENT BEFORE CONSTRUCTION BEGINS. ISOLATE HVAC SYSTEM IN AREAS WHERE WORK IS BEING DONE TO PREVENT CONTAMINATION OF DUCT SYSTEM. COMPLETE ALL CRITICAL BARRIERS OR IMPLEMENT CONTROL CUBE METHOD BEFORE CONSTRUCTION BEGINS. MAINTAIN NEGATIVE AIR PRESSURE WITHIN WORK SITE UTILIZING HEPA-EQUIPPED AIR FILTRATION UNITS. SEAL HOLES, PIPES, CONDUITS, AND PUNCTURES APPROPRIATELY. CONSTRUCT ANTEROOM AND REQUIRE ALL PERSONNEL TO PASS--THROUGH THIS ROOM SO THEY CAN BE VACUUMED USING A HEPA VACUUM CLEANER BEFORE LEAVING WORK SITE OR THEY CAN WEAR CLOTH OR PAPER COVERALLS THAT ARE REMOVED EACH TIME THEY LEAVE THE WORK SITE. ALL PERSONNEL ENTERING WORK SITE ARE REQUIRED TO WEAR SHOE COVERS. SHOE COVERS MUST BE CHANGED EACH TIME THE WORKER EXITS THE WORK AREA. PLACE ADHESIVE WALK-OFF MATS AT ENTRANCE TO WORK AREA WITH ANTEROOM. REPLACE PER MANUFACTURER'S RECOMMENDATIONS. DO NOT REMOVE BARRIERS FROM WORK AREA UNTIL COMPLETED PROJECT IS INSPECTED EACH BY THE HOSPITAL SAFETY OFFICER, FACILITIES MANAGEMENT MAINTENANCE AND ENGINEERING DEPARTMENT AND THOROUGHLY CLEANED BY THE HOSPITAL ENVIRONMENTAL SERVICES DEPARTMENT OR THEIR CONTRACTED ENVIRONMENTAL SERVICES COMPANY. CONTAIN CONSTRUCTION WASTE BEFORE TRANSPORT IN TIGHTLY COVERED CONTAINERS. COVER TRANSPORT RECEPTACLES OR CARS. TAPE COVERING. VACUUM WITH HEPA FILTERED VACUUM. WET MOP WITH DISINFECTANT AFTER BARRIERS ARE REMOVED. REMOVE ISOLATION OF HVAC SYSTEM IN AREAS WHERE WORK IS BEING PERFORMED. 	<ol style="list-style-type: none"> REMOVE BARRIER MATERIALS CAREFULLY TO MINIMIZE SPREADING OF DIRT AND DEBRIS ASSOCIATED WITH CONSTRUCTION. CONTAIN CONSTRUCTION WASTE BEFORE TRANSPORT IN TIGHTLY COVERED CONTAINERS. COVER TRANSPORT RECEPTACLES OR CARS. TAPE COVERING. VACUUM WORK WITH HEPA-FILTERED VACUUMS. WET MOP WITH DISINFECTANT AFTER BARRIERS ARE REMOVED. REMOVE ISOLATION OF HVAC SYSTEM IN AREAS WHERE WORK IS BEING PERFORMED.

TYPE OF CONSTRUCTION/PROJECT ACTIVITY TABLE

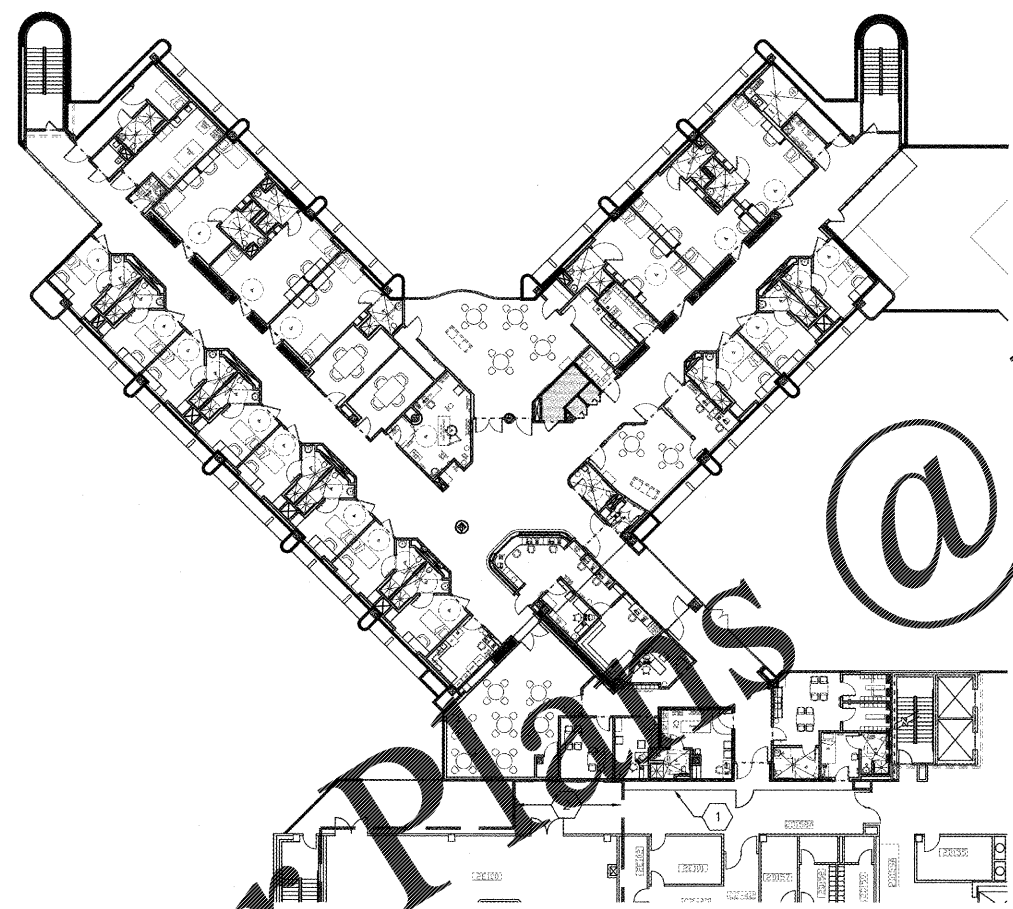
TYPE	DESCRIPTION
TYPE A	INSULATION AND NON-INVASIVE ACTIVITIES INCLUDES BUT IS NOT LIMITED TO: <ul style="list-style-type: none"> REMOVAL OF CEILING TILES FOR VISUAL INSPECTION LIMITED TO 1 TILE PER 60 SQUARE FEET PAINTING (BUT NOT SANDING), WALL COVERING ELECTRICAL TRIM WORK, MINOR PLUMBING, AND ACTIVITIES THAT DO NOT GENERATE DUST OR REQUIRE CUTTING OF WALLS OR ACCESS TO CEILINGS OTHER THAN FOR VISUAL INSPECTION
TYPE B	SMALL SCALE, SHORT DURATION ACTIVITIES THAT CREATE MINIMAL DUST INCLUDES BUT IS NOT LIMITED TO: <ul style="list-style-type: none"> INSTALLATION OF TELEPHONE AND COMPUTER CABLING ACCESS TO CHASE SPACES CUTTING OF WALLS OR CEILING WHERE DUST MIGRATION CAN BE CONTROLLED
TYPE C	WORK THAT GENERATES A MODERATE TO HIGH LEVEL OF DUST OR REQUIRES DEMOLITION OR REMOVAL OF ANY FIXED BUILDING COMPONENTS OR ASSEMBLIES INCLUDES BUT IS NOT LIMITED TO: <ul style="list-style-type: none"> SANDING OF WALLS FOR PAINTING OR WALL COVERING REMOVAL OF FLOOR COVERINGS, CEILING TILES AND CASEWORK NEW WALL CONSTRUCTION MINOR DUCT WORK OR ELECTRICAL WORK ABOVE CEILINGS MAJOR CABLING ACTIVITIES ANY ACTIVITY THAT CANNOT BE COMPLETED WITHIN A SINGLE WORK SHIFT
TYPE D	MAJOR DEMOLITION AND CONSTRUCTION PROJECTS INCLUDES BUT IS NOT LIMITED TO: <ul style="list-style-type: none"> ACTIVITIES THAT REQUIRE CONSECUTIVE WORK SHIFTS REQUIRES HEAVY DEMOLITION OR REMOVAL OF A COMPLETE CEILING SYSTEM NEW CONSTRUCTION

INFECTION CONTROL MATRIX--CLASS OF PRECAUTIONS: CONSTRUCTION PROJECT BY PATIENT RISK

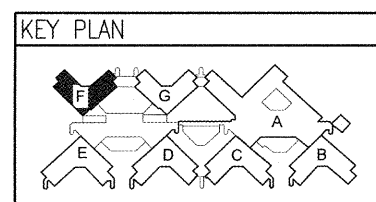
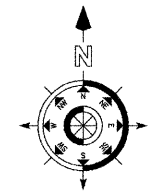
PATIENT RISK GROUP	TYPE A	TYPE B	TYPE C	TYPE D
LOW RISK GROUP 1	I	II	III	III/IV
MEDIUM RISK GROUP 2	I	II	III	IV
HIGH RISK GROUP 3	I	III/IV	III/IV	IV
HIGHEST RISK GROUP 4	III	III/IV	III/IV	IV

NOTE: INFECTION CONTROL APPROVAL WILL BE REQUIRED WHEN THE CONSTRUCTION ACTIVITY AND RISK LEVEL INDICATE THAT CLASS III OR CLASS IV CONTROL PROCEDURES ARE NECESSARY.

NOTE: REFER TO ALL PHASING SHEETS. GENERAL CONTRACTOR SHALL ENSURE THAT ALL CONTRACTORS ARE RESPONSIBLE FOR COORDINATION ACROSS ENTIRE SET OF CONSTRUCTION DOCUMENTS.



F1 OVERALL ICRA PLAN
SCALE: 1/16" = 1'-0"

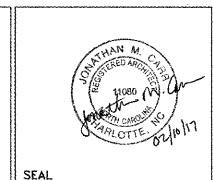


- ICRA GENERAL NOTES**
- PROVIDE CONTAINMENT AS REQUIRED (BY HOSPITAL) INFECTION CONTROL REPRESENTATIVE FOR WORK OUTSIDE MAJOR AREA.
 - PROVIDE CONTAINMENT AT THE FLOOR BELOW FOR ANY WORK IN THE CEILING PLENUM.
 - PROVIDE TEMPORARY DOOR WITH GASKETING TO PREVENT THE MOVEMENT OF DUST.
 - PROVIDE TEMPORARY EMERGENCY EXIT FROM CONSTRUCTION ZONE; HOWEVER, ALL GENERAL CONSTRUCTION TRAFFIC SHOULD BE THROUGH VESTIBULE.
 - CONTRACTOR TO PROTECT ALL FINISHES INCLUDING (BUT NOT LIMITED TO) FLOORING, CEILING, WALL SURFACES, DOORS, AND DOOR FRAMES DURING THE MOVEMENT OF MATERIALS TO/FROM LIMIT OF WORK. COORDINATE WITH COR AND SPECIFICATIONS FOR PROCEDURES/REQUIREMENTS.
 - GC TO KEEP CONSTRUCTION DOORS LOCKED AT ALL TIMES.

- ICRA KEYNOTES**
- CONTRACTOR TO PROVIDE A HARD BARRIER FOR DUST PARTITION WITH 2'-0" x 7'-0" DOORS.
 - CONTRACTOR TO PROVIDE TEMPORARY DUST BARRIER FOR ABOVE CEILING WORK TO OCCUR AFTER HOURS.

REVISION	DESCRIPTION	DATE

Department of Veterans Affairs
Charlie Norwood
 VA Medical Center
 1 Freedom Way
 Augusta, Ga. 30904



Architect/Engineer Address
Harrell, Saltrick & Hopper
 Design & Management Solutions for the Built Environment
 8016 TOWER POINT DRIVE
 CHARLOTTE, NC 28227
 WWW.HSRPC.COM
 P 704.814.1330
 F 704.529.0633
 COPYRIGHT © 2012 HARRELL, SALTRICK & HOPPER, PC
 HSV PROJECT # 12015

Recommended Approvals:

1. MEDICAL CENTER DIRECTOR	6. OPERATIONS SERVICE LINE MANAGER
2. ASSISTANT DIRECTOR	7. INFECTION CONTROL MANAGER
3. CHIEF OF STAFF	8. SAFETY MANAGER
4. ASSOC. DIRECTOR	9. GENERAL ENGINEER
5. SERVICE LINE MGRS.	10. COR

Drawing Title
OVERALL ICRA PLAN
 100%
 CONSTRUCTION DOCUMENTS
 FULLY SPRINKLERED

Project Title
RENOVATE MENTAL HEALTH UNITS
 Drawn
 BWS III
 Building Number
 AutocAD File Name
 Checked
 Reviewed
 Const. Contract No.

Date
 February 10, 2017
 Project Number
 509-12-104
 DRAWING No.
G1108

