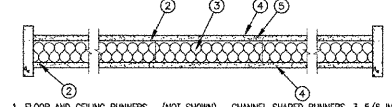


Design No. U465  
September 18, 2012  
Nonbearing Wall Rating - 1 HR.

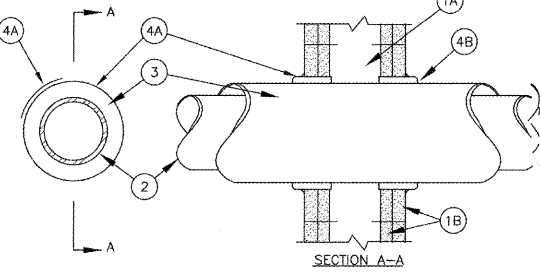
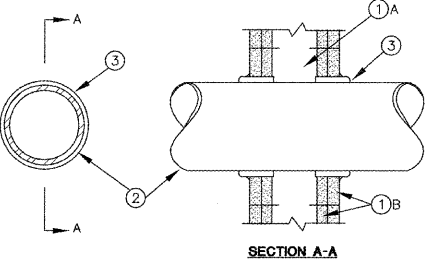


SEPTEMBER 07, 2004  
(FORMERLY SYSTEM NO. 147)

F RATINGS - 1 AND 2 HR (SEE ITEM 1)  
T RATINGS - 3/4, 1 AND 1-1/2 HR (SEE ITEM 3)  
L RATING AT AMBIENT - 2 CFM PER SQ. FT.  
L RATING AT 400F - LESS THAN 1 CFM PER SQ. FT.

SEPTEMBER 07, 2004  
(FORMERLY SYSTEM NO. 147)

F RATINGS - 1, 2, 3 AND 4 HR (SEE ITEMS 2 AND 3)  
T RATINGS - 0, 1, 2, 3 AND 4 HR (SEE ITEM 3)  
L RATING AT AMBIENT - LESS THAN 1 CFM PER SQ. FT.  
L RATING AT 400F - LESS THAN 1 CFM PER SQ. FT.



- 1. WALL ASSEMBLY - THE 1 OR 2 OR 4 HR FIRE-RATED GYPSUM WALLBOARD/STUD WALL ASSEMBLY SHALL BE CONSTRUCTED OF THE MATERIALS AND IN THE MANNER DESCRIBED IN THE INDIVIDUAL U400 OR U400 SERIES WALL OR PARTITION DESIGN IN THE UL FIRE RESISTANCE DIRECTORY AND SHALL INCLUDE THE FOLLOWING CONSTRUCTION FEATURES:
A. STUDS - WALL FRAMING MAY CONSIST OF EITHER WOOD STUDS OR STEEL CHANNEL STUDS...
B. WALLBOARD, GYPSUM - NOM 1/2 OR 5/8 IN. THICK, 4 FT. WIDE WITH SQUARE OR TAPERED EDGES...
2. THROUGH-PENETRANT - ONE METALLIC PIPE, CONDUIT OR TUBING INSTALLED EITHER CONCENTRICALLY OR ECCENTRICALLY WITHIN THE FIRESTOP SYSTEM...
3. FILL VOID OR CAVITY MATERIAL - CALK OR SEALANT - MIN. 5/8, 1-1/4, 1-7/8 AND 2-1/2 IN. THICKNESS OF CALK FOR 1, 2, 3 AND 4 HR RATED ASSEMBLIES...
4. FIRESTOP SYSTEM - INSTALLED SYMMETRICALLY ON BOTH SIDES OF WALL ASSEMBLY...

Table with 4 columns: MAX PIPE OR CONDUIT DIA. IN., F RATING HR., T RATING HR., and L RATING HR. It lists various pipe and conduit sizes and their corresponding fire ratings.

BEARING THE UL CLASSIFICATION MARKING.
F3 SYSTEM NO. W-L-1001
F5 SYSTEM NO. W-L-5001

Department of Veterans Affairs
Charlie Norwood
VA Medical Center
1 Freedom Way
Augusta, Ga. 30904



Harrell, Saltrick & Hopper
Design & Management Solutions for the Built Environment
807A TURNER POINT DRIVE
CHARLOTTE, NC 28227
WWW.HSHP.COM
PH: 704.484.3200
F: 704.329.0633
COPYRIGHT © 2012 HARRELL, SALTRICK & HOPPER, P.C.

Table with 2 columns: Recommended Approvals and Drawing Title. It lists various roles like Medical Center Director, Assistant Director, etc., and the drawing title 'UL ASSEMBLIES'.

UL DESIGN NO. U465
SCALE: NONE
Drawing Title: UL ASSEMBLIES
Project Title: RENOVATE MENTAL HEALTH UNITS
Date: February 10, 2017
Project Number: 509-12-104
Drawing No.: G1107
UL PERMITS THE REPRODUCTION OF THE MATERIALS CONTAINED IN THE ONLINE CERTIFICATION DIRECTORY SUBJECT TO THE FOLLOWING CONDITIONS: 1. THE GUIDE INFORMATION, DESIGNS AND/OR LISTINGS (FLETS) MUST BE PRESENTED IN THEIR ENTIRETY AND IN A NON-MISLEADING MANNER WITHOUT ANY MANIPULATION OF THE DATA FOR PRESENTATION OF THE STATEMENT...

Order Prints
Revisions table with columns for revision number, description, and date. Includes a large 'Order Prints' watermark.

