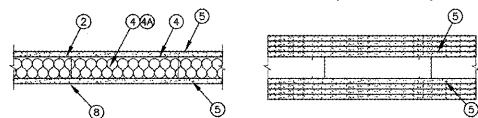


FIRE RESISTANCE RATINGS - ANSUL 283 DESIGN NO. U419

NONBEARING WALL RATING - 1, 2, 3 OR 4 HR (SEE ITEMS 4 & 5)



- 1. FLOOR AND CEILING RUNNERS - (NOT SHOWN) - FOR USE WITH ITEM 2 - CHANNEL SHAPED...
2. CHANNEL SHAPED STUDS...
3. CHANNEL SHAPED STUDS...
4. CHANNEL SHAPED STUDS...
5. CHANNEL SHAPED STUDS...

Table with columns: MIN. STD. DEPTH (IN), MIN. STD. THICKNESS (IN), MIN. THICKNESS OF INSULATION (IN), and MIN. THICKNESS OF PANEL (IN).

WHEN ITEM 7B, STEEL FRAMING MEMBERS, IS USED, NONBEARING WALL RATING IS LIMITED TO 1 HR...
7A. FRAMING MEMBERS - (NOT SHOWN) - (OPTIONAL ON ONE OR BOTH SIDES, NOT SHOWN, FOR SINGLE OR DOUBLE LAYERED SYSTEMS) - AS AN ALTERNATE TO ITEM 7, FRAMING CHANNELS AND STEEL FRAMING MEMBERS AS DESCRIBED BELOW...

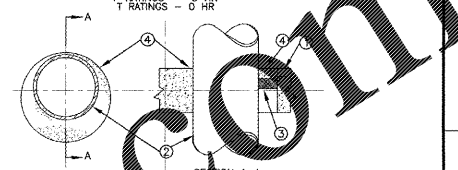
Table with columns: RATING, MIN. STD. DEPTH (IN), MIN. STD. THICKNESS (IN), MIN. THICKNESS OF INSULATION (IN), and MIN. THICKNESS OF PANEL (IN).

5/8 IN. PANELS, SPACED 12 IN. O.C. SCREWS OFFSET MIN 6 IN. FROM LOWER LEVEL, FOR ALL LAYERS, AN ADDITIONAL SCREW SHALL BE PLACED 1-1/4 IN. FROM EACH EDGE OF THE BOARD.

FOUR-LAYER SYSTEMS - FIRST LAYER - 1 IN. LONG FOR 1/2 IN., 5/8 IN. THICK PANELS, SPACED 24 IN. O.C. SECOND LAYER - 1-5/8 IN. LONG FOR 1/2 IN., 5/8 IN. THICK PANELS, SPACED 24 IN. O.C. THIRD LAYER - 2-1/4 IN. LONG FOR 1/2 IN., 5/8 IN. THICK PANELS OR 2-5/8 IN. LONG FOR 5/8 IN. PANELS, SPACED 24 IN. O.C. FOURTH LAYER - 2-5/8 IN. LONG FOR 1/2 IN. THICK PANELS OR 3 IN. LONG FOR 5/8 IN. THICK PANELS, SPACED 24 IN. O.C.

DESIGN NO. U419 SCALE: NONE

SYSTEM NO. CAJ1001



- 1. FLOOR AND CEILING ASSEMBLY - MIN 4" THICK. CONCRETE OR NORMAL WEIGHT (100-150 LB/CY) CONCRETE BLOCKS...
2. STEEL SLEEVES - (OPTIONAL, NOT SHOWN) - NOM 12 IN. DIA. (OR SMALLER) SCHEDULE 40...
3. FIRE RATING TEST - (OPTIONAL, NOT SHOWN) - NOM 12 IN. DIA. (OR SMALLER) SCHEDULE 40...

Table with columns: MAX PIPE DIA IN, MAX ANNULAR SPACE IN, PACKING MATERIAL TYPE (A), and MIN. CALK THICKNESS IN.

(A) BR= POLYETHYLENE BARRIER ROD, CF= CERAMIC FIBER BLANKET, GF= GLASS FIBER INSULATION. (B) CALK: INSTALLED FLUSH WITH TOP SURFACE OF FLOOR OR BOTH SURFACES OF WALL. (C) CALK: INSTALLED FLUSH WITH BOTTOM SURFACE OF FLOOR OR BOTH SURFACES OF WALL.

SCALE: NONE

Vertical scale markers on the left side: three eighths inch = one foot, one half inch = one foot, one quarter inch = one foot, one eighth inch = one foot.

Project information form including Department of Veterans Affairs, Charlie Norwood, VA Medical Center, 1 Freedom Way, Augusta, Ga. 30904. Includes a seal and signature area.

Recommended Approvals, Drawing Title (UL ASSEMBLIES), Project Title (RENOVATE MENTAL HEALTH UNITS), Date (February 10, 2017), Project Number (509-12-104), Drawing No. (GI106), and other project details.

