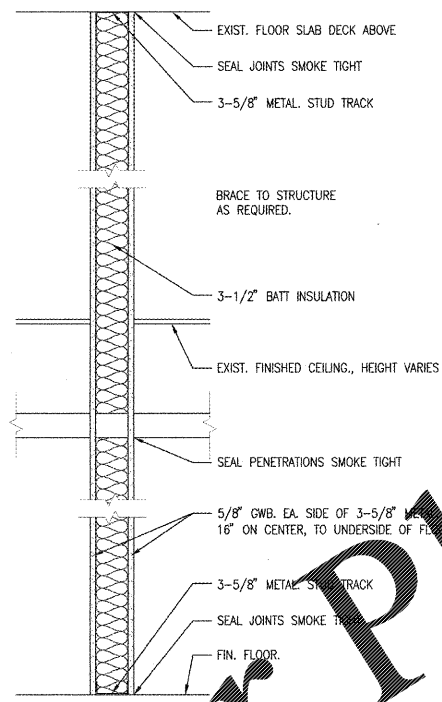


**INFECTION PREVENTION MEASURES**

- A. IMPLEMENT THE REQUIREMENTS OF VAMC'S INFECTION CONTROL RISK ASSESSMENT (ICRA) TEAM. ICRA GROUP MAY MONITOR DUST IN THE VICINITY OF THE CONSTRUCTION WORK AND REQUIRE THE CONTRACTOR TO TAKE CORRECTIVE ACTION IMMEDIATELY IF THE SAFE LEVELS ARE EXCEEDED.
- B. ESTABLISH AND MAINTAIN A DUST CONTROL PROGRAM AS PART OF THE CONTRACTOR'S INFECTION PREVENTIVE MEASURES IN ACCORDANCE WITH THE GUIDELINES PROVIDED BY ICRA GROUP. PRIOR TO START OF WORK, PREPARE A PLAN DETAILING PROJECT-SPECIFIC DUST PROTECTION MEASURES, INCLUDING PERIODIC STATUS REPORTS, AND SUBMIT TO THE COR FOR REVIEW FOR COMPLIANCE WITH CONTRACT REQUIREMENTS IN ACCORDANCE WITH SECTION 01 33 23, SHOP DRAWINGS, PRODUCT DATA AND SAMPLES.
  - 1. ALL PERSONNEL INVOLVED IN THE CONSTRUCTION OR RENOVATION ACTIVITY SHALL BE EDUCATED AND TRAINED IN INFECTION PREVENTION MEASURES ESTABLISHED BY THE MEDICAL CENTER.
- C. MEDICAL CENTER INFECTION CONTROL PERSONNEL SHALL MONITOR FOR AIRBORNE DISEASE (E.G. ASPERGILLOSIS) AS APPROPRIATE DURING CONSTRUCTION. A BASELINE OF CONDITIONS MAY BE ESTABLISHED BY THE MEDICAL CENTER PRIOR TO THE START OF WORK AND PERIODICALLY DURING THE CONSTRUCTION STAGE TO DETERMINE IMPACT OF CONSTRUCTION ACTIVITIES ON INDOOR AIR QUALITY. IN ADDITION:
  - 1. THE COR AND VAMC INFECTION CONTROL PERSONNEL SHALL REVIEW PRESSURE DIFFERENTIAL MONITORING DOCUMENTATION TO VERIFY THAT PRESSURE DIFFERENTIALS IN THE CONSTRUCTION ZONE AND IN THE PATIENT-CARE ROOMS ARE APPROPRIATE FOR THEIR SETTINGS. THE REQUIREMENT FOR NEGATIVE AIR PRESSURE IN THE CONSTRUCTION ZONE SHALL DEPEND ON THE LOCATION AND TYPE OF ACTIVITY. UPON NOTIFICATION, THE CONTRACTOR SHALL IMPLEMENT CORRECTIVE MEASURES TO RESTORE PROPER PRESSURE DIFFERENTIALS AS NEEDED.
  - 2. IN CASE OF ANY PROBLEM, THE MEDICAL CENTER, ALONG WITH ASSISTANCE FROM THE CONTRACTOR, SHALL CONDUCT AN ENVIRONMENTAL ASSESSMENT TO FIND AND ELIMINATE THE SOURCE.
- D. IN GENERAL, FOLLOWING PREVENTIVE MEASURES SHALL BE ADOPTED DURING CONSTRUCTION TO KEEP DOWN DUST AND PREVENT MOLD.
  - 1. DAMPEN DEBRIS TO KEEP DOWN DUST AND PROVIDE TEMPORARY CONSTRUCTION PARTITIONS IN EXISTING STRUCTURES WHERE DIRECTED BY THE COR. BLANK OFF DUCTS AND DIFFUSERS TO PREVENT CIRCULATION OF DUST INTO OCCUPIED AREAS DURING CONSTRUCTION.
  - 2. DO NOT PERFORM DUST PRODUCING TASKS WITHIN OCCUPIED AREAS WITHOUT THE APPROVAL OF THE COR. FOR CONSTRUCTION IN ANY AREAS THAT WILL REMAIN JOINTLY OCCUPIED BY THE MEDICAL CENTER AND CONTRACTOR'S WORKERS, THE CONTRACTOR SHALL:
    - a. PROVIDE DUST PROOF ONE-HOUR TEMPORARY DRYWALL CONSTRUCTION BARRIERS TO COMPLETELY SEPARATE CONSTRUCTION FROM THE OPERATIONAL AREAS OF THE HOSPITAL IN ORDER TO CONTAIN DEBRIS AND DUST. BARRIERS SHALL BE SEALED AND MADE PRESENTABLE ON HOSPITAL OCCUPIED SIDE. INSTALL A SELF-CLOSING RATED DOOR IN A METAL FRAME, COMMENSURATE WITH THE PARTIAL, TO ALLOW WORKER ACCESS. MAINTAIN NEGATIVE AIR AT ALL TIMES. A FIRE RETARDANT POLYSTYRENE 1/2" THICK GELATIN PLASTIC BARRIER MEETING LOCAL FIRE CODES MAY BE USED WHERE DUST CONTAINMENT IS THE ONLY OPTION AND AN AGREEMENT IS REACHED WITH THE COR AND MEDICAL CENTER.
    - b. HEPA FILTRATION IS REQUIRED WHERE THE EXHAUST DUST MAY REENTER THE BREATHING ZONE. THE CONTRACTOR SHALL VERIFY THAT CONSTRUCTION EXHAUSTS TO EXTERIOR IS NOT REINTRODUCED TO THE MEDICAL CENTER THROUGH INTAKE VENTS, OR BUILDING OPENINGS. INSTALL HEPA (HIGH EFFICIENT PARTICULATE ACCUMULATOR) FILTER VACUUM SYSTEM RATED AT LEAST CAPTURE OF 0.3 MICRONS INCLUDING POLLEN, MOLD SPORES AND DUST PARTICLES. CONTINUAL POSITIVE AIR PRESSURES OCCURRING WITHIN THE WORK AREA. HEPA FILTERS SHOULD BE ASHRAE 17.1 TYPE PREFILTER TO EXTEND THE USEFUL LIFE OF THE HEPA. PROVIDE BOTH PRIMARY AND SECONDARY FILTRATION UNITS. EXHAUST HOSES SHALL BE HEAVY DUTY, FLEXIBLE STEEL REINFORCED AND INSULATED SO THAT DUST IS NOT REINTRODUCED TO THE MEDICAL CENTER.
    - c. ADHESIVE WALK-OFF/CARPET WALK-OFF MATS, MINIMUM 600MM X 900MM (24" X 36"), SHALL BE USED AT ALL INTERIOR TRANSITIONS FROM THE CONSTRUCTION AREA TO OCCUPIED MEDICAL CENTER AREA. THESE MATS SHALL BE CHANGED OFTEN AS REQUIRED TO MAINTAIN CLEAN WORK AREAS DIRECTLY OUTSIDE CONSTRUCTION AREA AT ALL TIMES.
    - d. VACUUM AND WET WIP ALL TRANSITION AREAS FROM CONSTRUCTION TO THE OCCUPIED MEDICAL CENTER AT THE END OF EACH WORKDAY. VACUUM SHALL UTILIZE HEPA FILTRATION. MAINTAIN SURROUNDING AREA FREQUENTLY REMOVED DEBRIS AS THEY ARE CREATED. TRANSPORT THESE OUTSIDE THE CONSTRUCTION AREA IN CONTAINERS WITH TIGHTLY FITTING LIDS.
    - e. THE CONTRACTOR SHALL NOT HAUL DEBRIS THROUGH PATIENT-CARE AREAS WITHOUT PRIOR APPROVAL OF THE COR AND THE MEDICAL CENTER. WHEN APPROVED, DEBRIS SHALL BE HAULED IN ENCLOSED DUST PROOF CONTAINERS OR WRAPIED IN PLASTIC AND SEALED WITH DUCT TAPE. NO SHARP OBJECTS SHOULD ALLOWED TO CUT THROUGH THE PLASTIC. WIPE DOWN THE EXTERIOR OF THE CONTAINERS WITH A DAMP TO REMOVE DUST. ALL EQUIPMENT, TOOLS, MATERIAL, ETC. TRANSPORTED THROUGH OCCUPIED AREAS SHALL BE MADE FREE FROM DUST AND MOISTURE BY VACUUMING AND WIPE DOWN.
    - f. USING A HEPA VACUUM, CLEAN INSIDE THE BARRIER AND VACUUM CEILING TILE PRIOR TO REPLACEMENT. ANY CEILING ACCESS PANELS OPENED FOR INVESTIGATION BEYOND SEALED AREAS SHALL BE SEALED IMMEDIATELY WHEN UNATTENDED.
    - g. THERE SHALL BE NO STANDING WATER DURING CONSTRUCTION. THIS INCLUDES WATER IN EQUIPMENT DRIP PANS AND OPEN CONTAINERS WITHIN THE CONSTRUCTION AREAS. ALL ACCIDENTAL SPILLS MUST BE CLEANED UP AND DRIED WITHIN 12 HOURS. REMOVE AND DISPOSE OF POROUS MATERIALS THAT REMAIN DAMP FOR MORE THAN 72 HOURS.
    - h. AT COMPLETION, REMOVE CONSTRUCTION BARRIERS AND CEILING PROTECTION CAREFULLY. OUTSIDE OF NORMAL WORK HOURS. VACUUM AND CLEAN ALL SURFACES FREE OF DUST AFTER THE REMOVAL.
- E. FINAL CLEANUP:
  - 1. UPON COMPLETION OF PROJECT, OR AS WORK PROGRESSES, REMOVE ALL CONSTRUCTION DEBRIS FROM ABOVE CEILING, VERTICAL SHAFTS AND UTILITY CHASES THAT HAVE BEEN PART OF THE CONSTRUCTION.
  - 2. PERFORM HEPA VACUUM CLEANING OF ALL SURFACES IN THE CONSTRUCTION AREA. THIS INCLUDES WALLS, CEILINGS, CABINETS, FURNITURE (BUILT-IN OR FREE STANDING), PARTITIONS, FLOORING, ETC.
  - 3. ALL NEW AIR DUCTS SHALL BE CLEANED PRIOR TO FINAL INSPECTION.



TEMPORARY CONSTRUCTION PARTITION  
(WHERE DOOR OPENING IS NECESSARY, INSTALL CLASS C, 3/4 HR. FIRE, SMOKE RATED DOOR WITH SELF-CLOSING DEVICE)

1) TEMP. CONSTRUCTION PARTITION  
SCALE: NONE

BUILDING INFORMATION					
CONSTRUCTION TYPE	(2,2,2)	RENOVATION TO EXISTING BUILDING WING ONLY	STRUCTURAL DESIGN		
FIRE DISTRICT	EXISTING		SEISMIC PERFORMANCE CRITERIA		
FLOOD HAZARD	EXISTING		SEISMIC SITE CLASS	SEISMIC DESIGN CATEGORY	OCCUPANCY CATEGORY
BUILDING PROJECT AREA	15,000GSF		D (ASSUMED PER CODE)	D	IV
SECOND FLOOR ("F" WING)	15,000GSF		IMPORTANCE FACTOR = 1.5		
SECOND FLOOR ("G" WING)	15,000GSF		SEISMIC RESTRAINT IS REQUIRED FOR ELECTRICAL, MECHANICAL, PLUMBING AND FIRE PROTECTION SYSTEM COMPONENTS.		
FINISHING HEIGHT	EXISTING		SYSTEM COMPONENTS SHALL INCLUDE: MEDICAL GAS PIPING, SANITARY PIPING, FIRE PROTECTION PIPING, PLUMBING WATER PIPING, ELECTRICAL CONDUIT, DUCTWORK, MECHANICAL EQUIPMENT, AND MECHANICAL PIPING.		
PRIMARY OCCUPANCY	EXISTING HEALTH CARE OCCUPANCIES		PLUMBING FIXTURE REQUIREMENTS		
ACCESSORY OCCUPANCIES	ASSEMBLY		SEE SHEET PL001 FOR FIXTURE COUNT		
MIXED OCCUPANCIES	NO				
LIFE SAFETY PROVISIONS			ENERGY SUMMARY		
SPRINKLERS	YES		CLIMATE ZONE	IECC ZONE 3	
STANDPIPE	YES		THERMAL ENVELOPE		
EMERGENCY LIGHTING	YES		INSULATION R-VALUE	N/A	
EXIT SIGNS	YES		MECHANICAL DESIGN		
FIRE ALARM	YES				
FIRE EXTINGUISHERS	YES		ELECTRICAL DESIGN		
SMOKE DETECTORS	YES				
HEAT DETECTORS	YES				
PANIC HARDWARE	YES				
FIRE PROTECTION RATINGS					
STRUCTURAL FRAME	EXISTING				
BEARING WALLS					
EXTERIOR	N/A				
INTERIOR (SHEAR WALLS)	2 HOUR		FIRE ALARM		
NONBEARING WALLS			NFPA EDITION	2012	
EXTERIOR	EXISTING		ZONES COORDINATED with SPRINKLERS ZONES	YES	
INTERIOR	EXISTING		INTERFACE with FIRE ALARM	YES	
FLOOR CONSTRUCTION	2 HOUR		ELEVATOR CONTROL	EXIST.	
ROOF CONSTRUCTION	N/A				
SHAFT ENCLOSURES	2 HOUR				
CORRIDOR SEPARATION	NRST				
OCCUPANCY SEPARATION	N/A				
PARTY/FIRE WALL SEPARATION	N/A				
SMOKE BARRIER SEPARATION	1 HOUR				
INCIDENTAL USE SEPARATION	1 HOUR	SOILED & CLEAN ROOMS			
STAIR SEPARATION	2 HOUR				
VERTICAL OPENINGS	2 HOUR				
INTERIOR FINISHES CLASSIFICATION	CLASS A				

F7 BUILDING INFORMATION  
SCALE: NONE

REVISION	DESCRIPTION	DATE

Department of Veterans Affairs  
**Charlie Norwood**  
 VA Medical Center  
 1 Freedom Way  
 Augusta, Ga. 30904

Architect/Engineer Address  
  
 Design & Management Solutions for the Built Environment  
 8016 TOWER POINT DRIVE  
 CHARLOTTE, NC 28227  
 P 704.814.1200  
 F 704.371.0633  
 WWW.HSHPC.COM  
 COPYRIGHT © 2012 HARRELL, SALTRICK & HOPPER, PC  
 HSH PROJECT # 12015

Recommended Approvals:	
1. MEDICAL CENTER DIRECTOR	6. OPERATIONS SERVICE LINE MANAGER
2. ASSISTANT DIRECTOR	7. INFECTION CONTROL MANAGER
3. CHIEF OF STAFF	8. SAFETY MANAGER
4. ASSOC. DIRECTOR	9. GENERAL ENGINEER
5. SERVICE LINE MGRS.	10. COR

Drawing Title	Project Title	Date
BUILDING INFORMATION	RENOVATE MENTAL HEALTH UNITS	February 10, 2017
100% CONSTRUCTION DOCUMENTS	Drawn	Project Number 509-12-104
FULLY SPINKLERED	Checked	DRAWING No. GI100
	Reviewed	Const. Contract No.

Veterans Affairs logo and text.