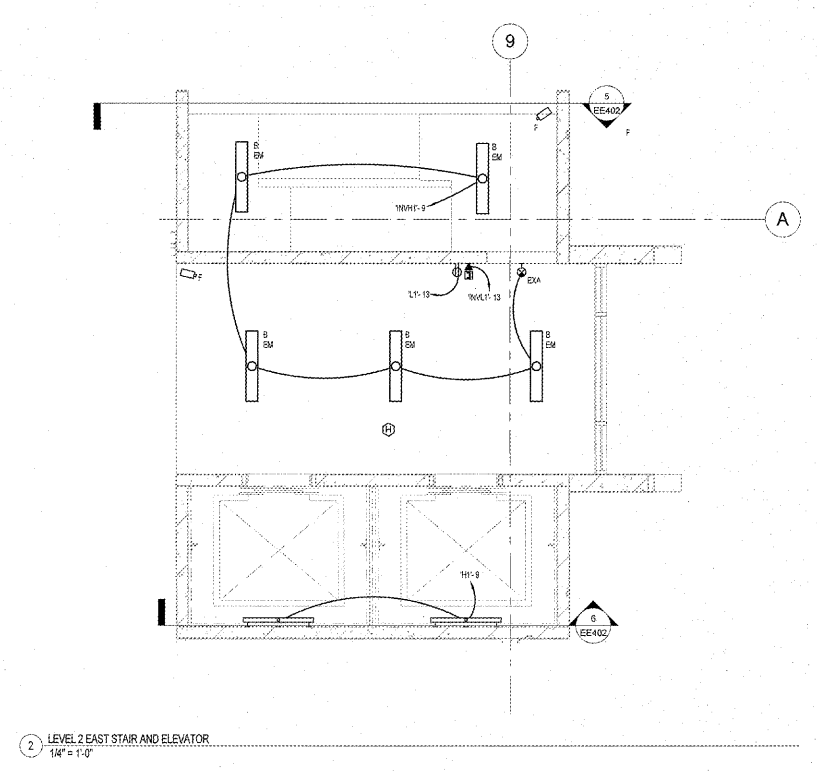
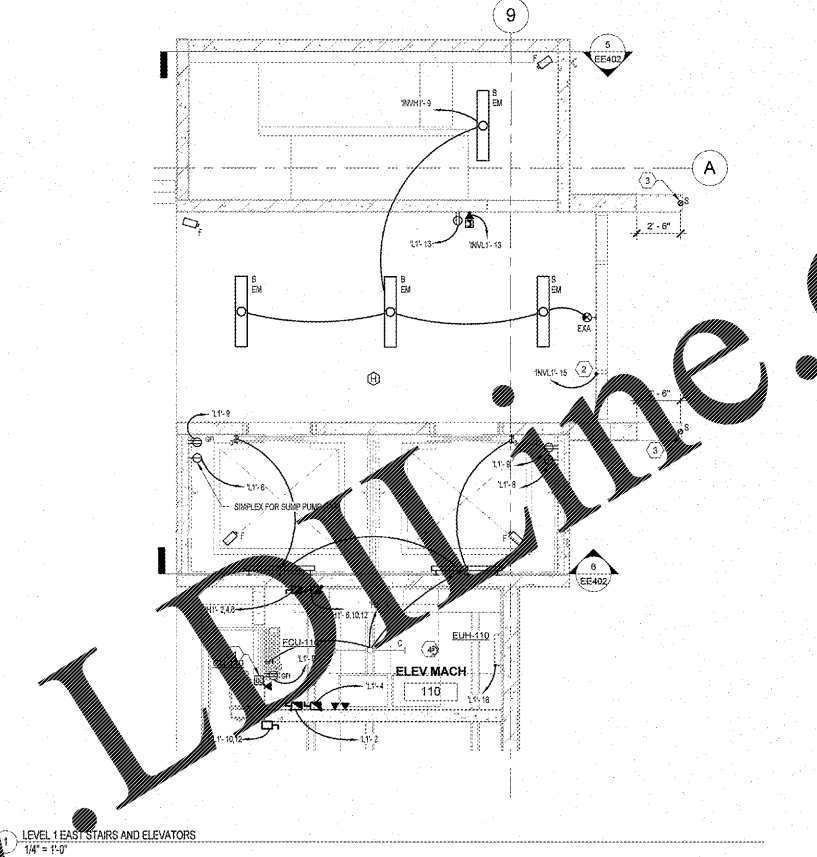
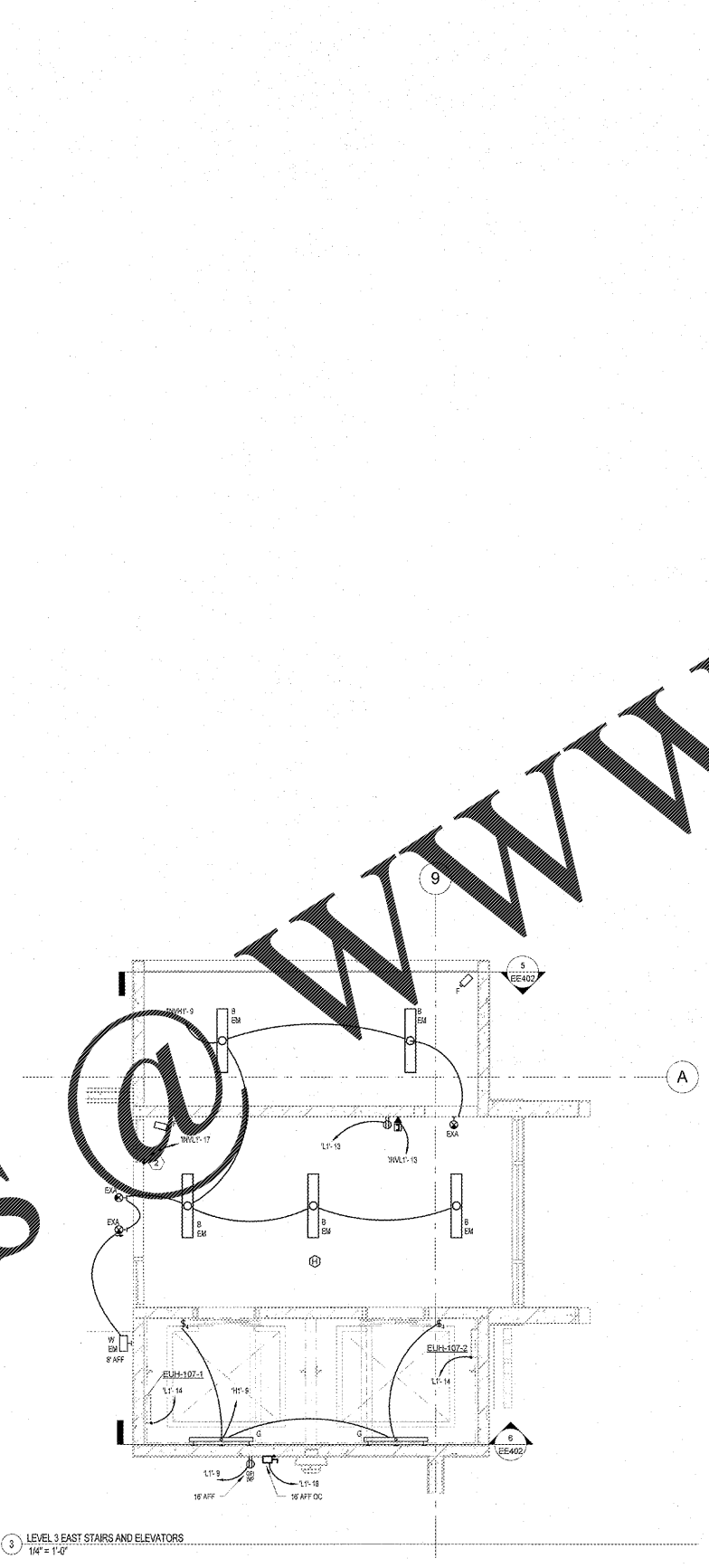
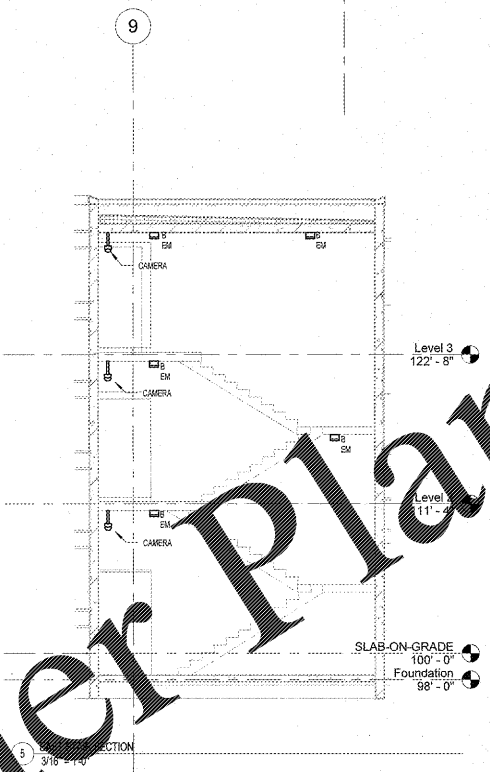
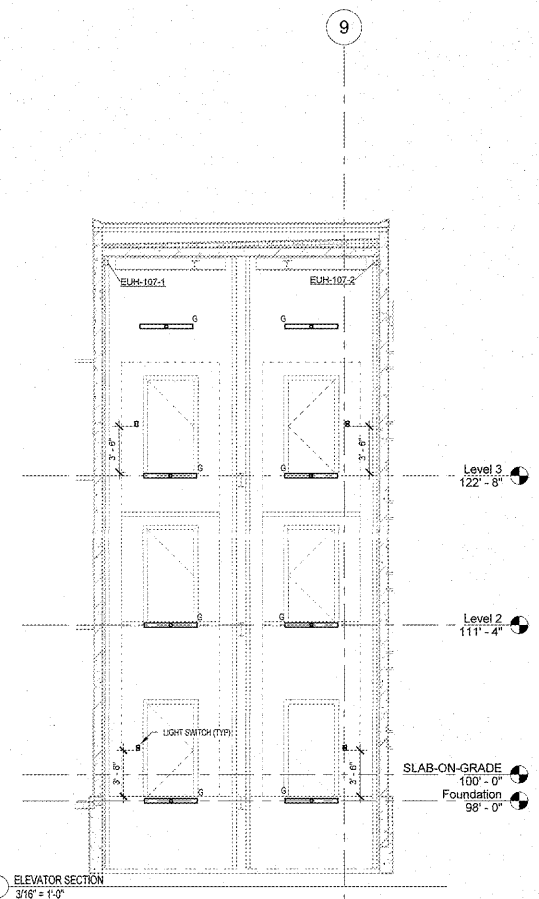


GENERAL NOTES

KEYED NOTES

- CONNECT ELEVATOR CONTACTS TO PMS PANEL AUXILIARY CONTACT FOR MONITORING ONLY.
- PROVIDE POWER CONNECTION FOR SLIDING DOOR. COORDINATE REQUIREMENTS WITH VENDOR.
- CAST-IN PLACE UP-LIGHT, CENTERED UNDER VERTICAL TRIANGULAR PANEL, MEASURED FROM INSIDE BOTTOM OF PANEL CONTACTS SEPARATE. INSTALL PER MANUFACTURER INSTRUCTIONS. CIRCUIT WITH SIDEWALK COLLARS (SEE SITE PLAN) ACCORDING TO PANEL SCHEDULES.
- EXACT ELEVATOR MACHINE ROOM PIT AND SHaft LAYOUT SHALL BE COORDINATED WITH THE ELEVATOR VENDOR. SUBMIT PROPOSED LAYOUT FOR APPROVAL.



one eighth inch = one foot  
 one quarter inch = one foot  
 one half inch = one foot  
 three eighths inch = one foot  
 one inch = one foot  
 one and one half inches = one foot  
 two inches = one foot  
 three inches = one foot  
 four inches = one foot  
 five inches = one foot  
 six inches = one foot  
 seven inches = one foot  
 eight inches = one foot  
 nine inches = one foot  
 ten inches = one foot  
 eleven inches = one foot  
 twelve inches = one foot

Order Plans

Revisions	Date

**VA** U.S. Department of Veterans Affairs  
 MEMPHIS VAMC  
 1030 JEFFERSON AVE, MEMPHIS, TN 38104

ARCHITECT/ENGINEERS:  
**GUIDON DESIGN**  
 805 N. CAPITOL AVE. SUITE 100 INDIANAPOLIS, IN 46204  
 317.850.9388 WWW.GUIDONDESIGN.COM  
 SUSTAINABLE ARCHITECTURE + ENGINEERING

MEP Engineer  
 APOGEE CONSULTING GROUP  
 1151 Kildaire Farm Rd. Suite 120 Cary, NC 27511  
 Tel: 919-858-7420

Functional Design  
 CARL WALKER INC.  
 3211 Internet Blvd., Suite 220 Frisco, TX 75034  
 Tel: 469-777-5143

BID SET			
Drawing Title ELECTRICAL ENLARGEMENTS	Project Title CONSTRUCT PARKING GARAGE ON WEST LOT	Project Number 15-412	OFFICE OF FACILITIES MANAGEMENT
Approved for Design Concept: FACILITY MANAGEMENT DIVISION MANAGER	Location MEMPHIS, TN	Building Number	
Date 11/14/2016	Checked By: JKM	Drawn By: SCB	VA Project Number 614-319
			EE402

