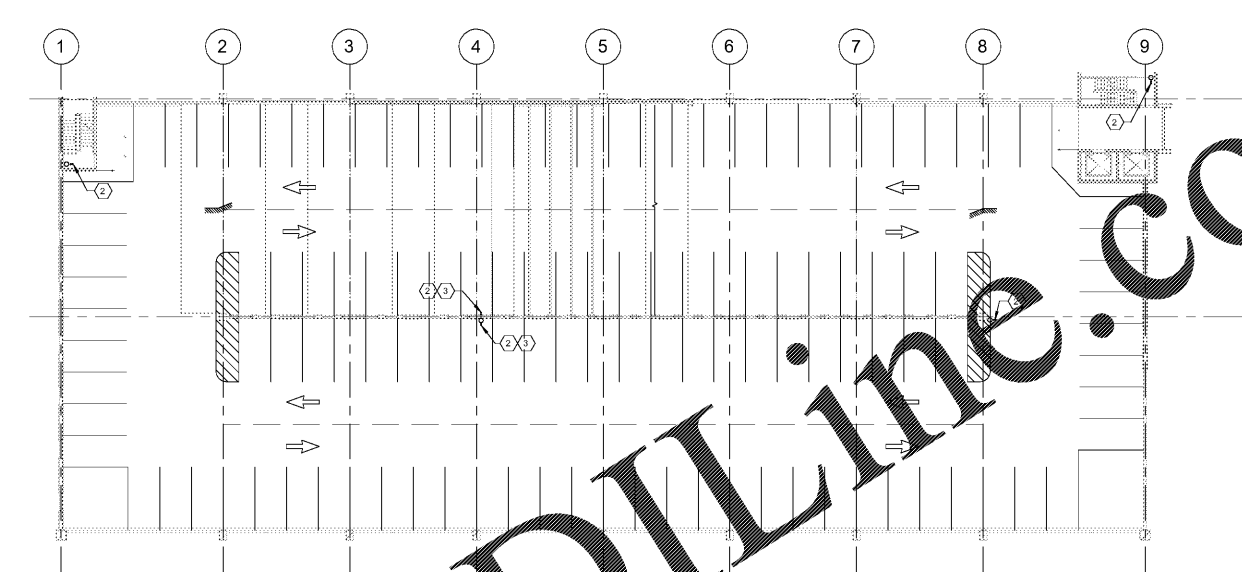
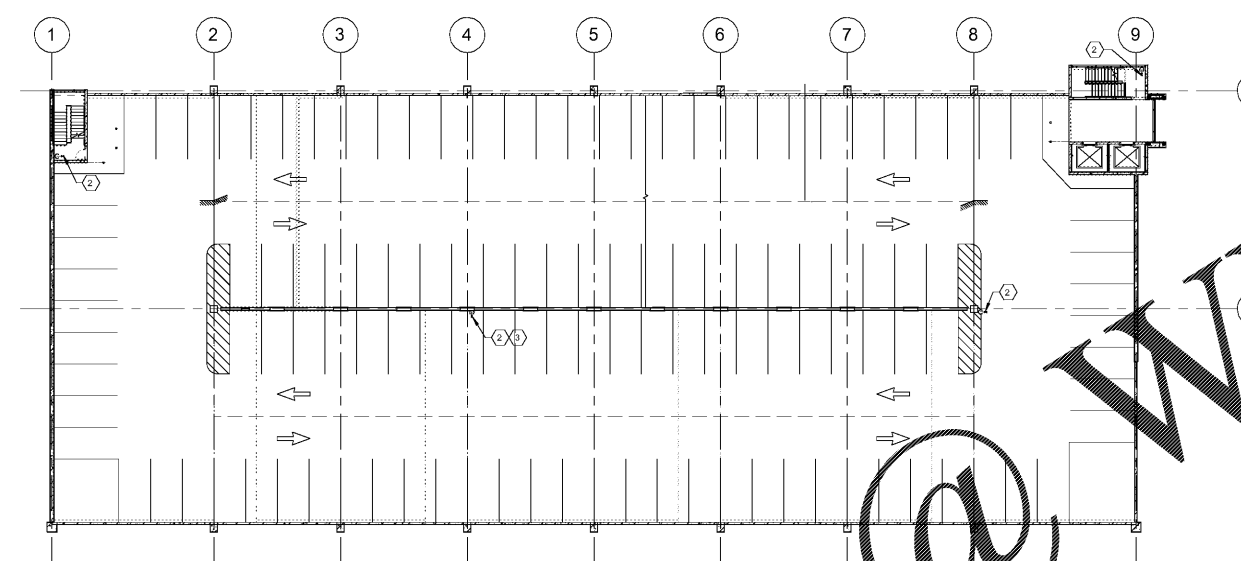


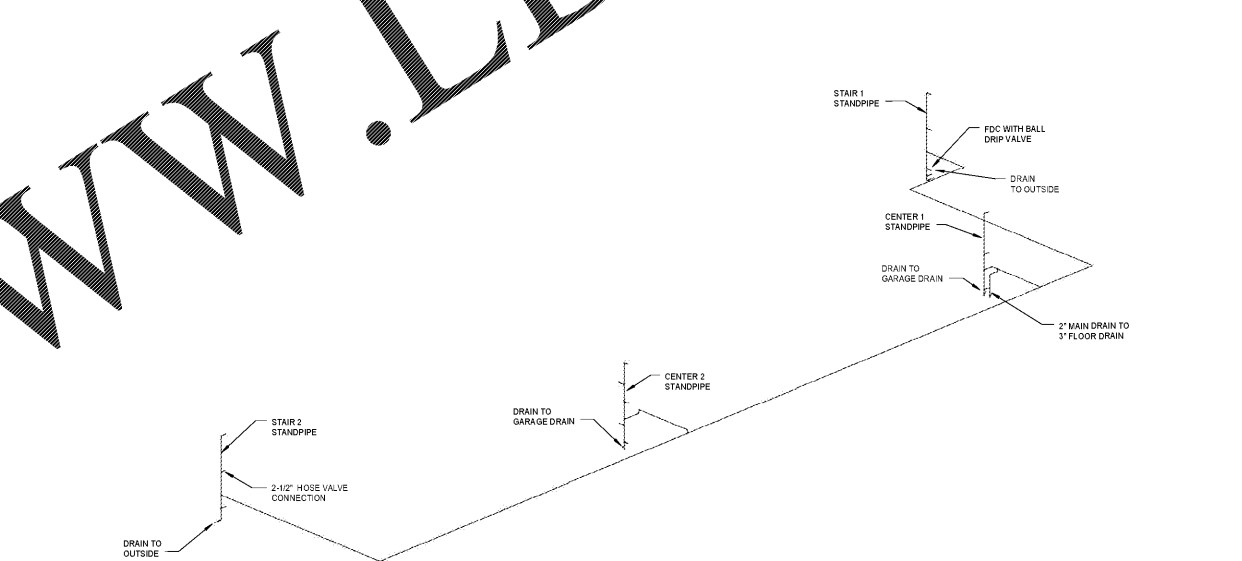
1 FIRST FLOOR FIRE SUPPRESSION PLAN
FX101 1" = 20'-0"



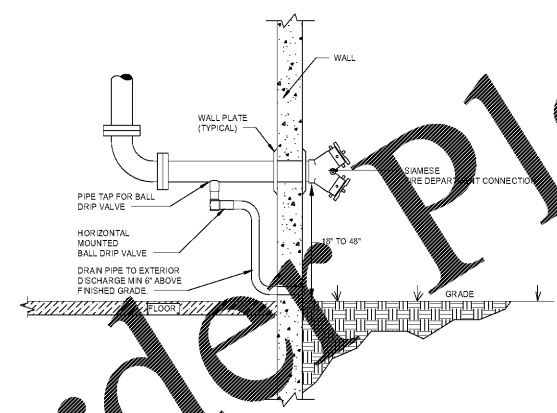
2 SECOND FLOOR FIRE SUPPRESSION PLAN
FX101 1" = 20'-0"



3 THIRD FLOOR FIRE SUPPRESSION PLAN
FX101 1" = 20'-0"



4 FP RISERS
FX101



5 WALL MOUNTED FIRE DEPARTMENT CONNECTION DETAIL
FX101

- KEY NOTE**
- 1 PROVIDE FIRE DEPARTMENT CONNECTION ON EXTERIOR, 30" ABOVE GRADE. PROVIDE DRAIN TO EXTERIOR. REFER TO DETAIL 5FX101.
 - 2 PROVIDE DRY STANDPIPE WITH 2-1/2" HOSE VALVE CONNECTIONS AT EACH FLOOR. COORDINATE FINAL LOCATION WITH DOMESTIC WATER RISER.
 - 3 ACCESS REQUIRED BETWEEN PARKING SPACES AND MUST BE ACCESSIBLE FROM BOTH SIDES TO MEET TRAVEL DISTANCE REQUIREMENTS.

- FIRE SUPPRESSION GENERAL NOTES**
- 1 DESIGN, INSTALLATION AND TESTING SHALL BE IN ACCORDANCE WITH NFPA 14 FOR CLASS 1 MANUAL DRY STAND PIPE SYSTEM EXCEPT AS MODIFIED BY SPECIFICATION SECTION 21 42 00.
 - 2 CONTRACTOR SHALL PROVIDE DESIGN, MATERIALS, EQUIPMENT AND INSTALLATION, INSPECTION AND TESTING OF A COMPLETE AND READY FOR OPERATION FIRE SUPPRESSION MANUAL DRY STANDPIPE SYSTEM AS REQUIRED BY NFPA 14.
 - 3 SIZE STANDPIPES TO PROVIDE 100 PSIG RESIDUAL PRESSURE AT REQUIRED FLOW AT THE MOST REMOTE CONNECTIONS.
 - 4 CONNECTION SHALL BE THREADED TO MATCH THOSE ON THE LOCAL FIRE PROTECTION SERVICE.
 - 5 ALL DEVICES AND EQUIPMENT SHALL BE LISTED FOR THE INTENDED PURPOSE.
 - 6 PROVIDE MANUAL DRY STANDPIPE, HYDRAULICALLY SIZED PER REQUIREMENTS OF NFPA 14 (MINIMUM 1/2" WITH 2-1/2" HOSE VALVE CONNECTED AT EACH FLOOR MOUNTED WITH CENTER OF HOSE VALVE LOCATED BETWEEN 3 AND 9 FEET ABOVE FINISHED FLOOR (AFF)). ALL HOSE VALVE CONNECTIONS AND STATIONS ARE TO BE LOCATED CLEAR OF OBSTRUCTIONS AND SHALL NOT BE OBSTRUCTED BY ANY CLOSED OR OPEN STAIRWELL DOOR(S) OR OTHER OBJECTS.
 - 7 PROVIDE FIRE DEPARTMENT CONNECT (FDC) ON EXTERIOR ABOVE GRADE WITHIN 100' OF NEAREST HYDRANT, VISIBLE AND RECOGNIZABLE FROM THE STREET OR NEAREST FIRE DEPARTMENT ACCESS. FDC TO BE 10" - 48" ABOVE GRADE MEASURED TO CENTER. PROVIDE SIGN INDICATING PRESSURE REQUIRED AT FDC TO MEET SYSTEM DESIGN DEMAND. PROVIDE THE SIZE, TYPE, AND LOCATION AS REQUIRED BY LOCAL FIRE PROTECTION SERVICE AND CAPACITY PER REQUIREMENTS OF NFPA 14. PROVIDE SIGN AT EACH FDC LOCATION INDICATING "STANDPIPE - MANUAL DRY SYSTEM" IN APPROVED LOCATION.
 - 8 PROVIDE MINIMUM 2" MAIN DRAIN TO FLOOR DRAIN SIZED PER REQUIREMENTS OF NFPA 14.

- FIRE SUPPRESSION GENERAL NOTES**
- 9 ROUTE ALL PIPE TIGHT TO UNDERSIDE OF STRUCTURE.
 - 10 PROVIDE DRAIN TO EXTERIOR SIZED PER REQUIREMENTS OF NFPA 14.
 - 11 PROVIDE SIGN WITH HYDRAULIC DESIGN INFORMATION AS REQUIRED BY NFPA 14 IN APPROVED LOCATION.
 - 12 PROVIDE SIGNS ON ALL MAIN AND SECTIONAL CONTROL VALVES INDICATING PORTION OF THE SYSTEM CONTROLLED BY THE VALVE PER REQUIREMENTS OF NFPA 14.
 - 13 PROVIDE SIGN ON ALL CONTROL, DRAIN, AND TEST CONNECTION VALVES INDICATING THE PURPOSE OF EACH VALVE PER REQUIREMENTS.
 - 14 PROVIDE SIGNS FOR EACH HOSE CONNECTION NOT LOCATED IN AN EXIT STAIRWELL TO IDENTIFY THE LOCATION OF THE HOSE CONNECTION IN AN APPROVED MANNER PER THE REQUIREMENTS OF THE NFPA 14 AND THE NFPA 170.

Order Plans

WWW.LDILine.com

Revisions:	Date

VA U.S. Department of Veterans Affairs
MEMPHIS VAMC
1030 JEFFERSON AVE, MEMPHIS, TN 38104

ARCHITECT/ENGINEERS:
PROJECT LEAD
Architect, Structural Engineer, Civil Engineer
GUIDON DESIGN
905 N. CAPITOL AVE. SUITE 100 INDIANAPOLIS, IN 46204
317.800.6388 WWW.GUIDONDESIGN.COM
SUSTAINABLE ARCHITECTURE + ENGINEERING

MEP Engineer
APOGEE CONSULTING GROUP
1151 Kildaire Farm Rd. Suite 120 Cary, NC 27511
Tele: 919-858-7420

Functional Design
CARL WALKER INC.
3211 Internet Blvd., Suite 220 Frisco, TX 75034
Tele: 469-777-5143

BID SET			
Drawing Title FIRE SUPPRESSION PLAN	Project Title CONSTRUCT PARKING GARAGE ON WEST LOT	Project Number 15.1067 Building Number	OFFICE OF FACILITIES MANAGEMENT
Approved for Design Concept: FACILITY MANAGEMENT DIVISION MANAGER	Location MEMPHIS, TN	Drawing Number FX101	VA Project Number 614-319
Date 11/14/2016	Checked By: CC	Drawn By: ORD	U.S. Department of Veterans Affairs