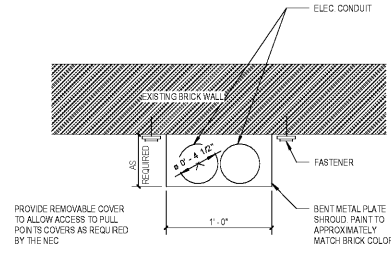


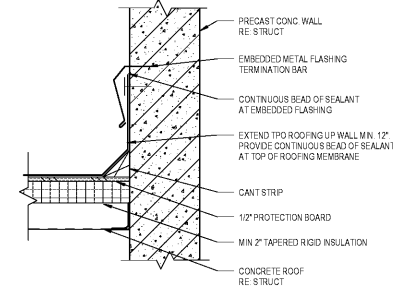
one eighth inch = one foot  
 one quarter inch = one foot  
 one half inch = one foot  
 three eighths inch = one foot  
 one inch = one foot  
 one and one eighth inches = one foot  
 one and one fourth inches = one foot  
 one and one half inches = one foot  
 two inches = one foot  
 three inches = one foot  
 four inches = one foot  
 five inches = one foot  
 six inches = one foot  
 seven inches = one foot  
 eight inches = one foot  
 nine inches = one foot  
 ten inches = one foot

1 2 3 4 5 6 7 8 9

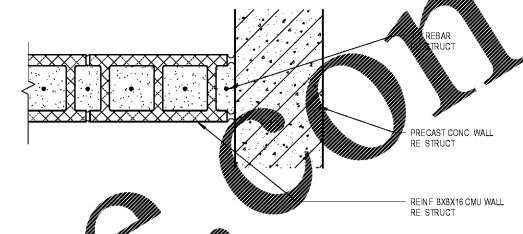
A  
B  
C  
D  
E  
F



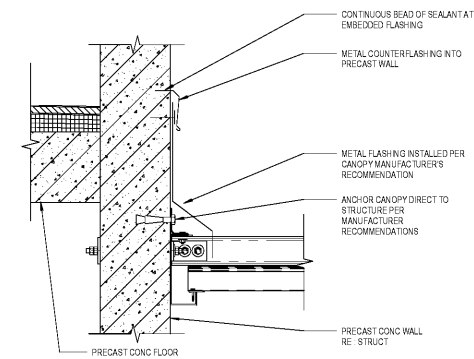
1 CONDUIT SHROUD - BUILDING 5  
 AS4D SCALE: 1/2" = 1'-0"



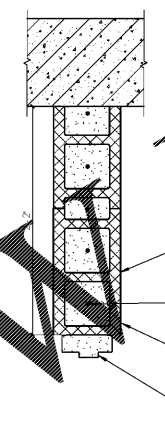
2 ROOFING DETAIL  
 AS4E SCALE: 1/2" = 1'-0"



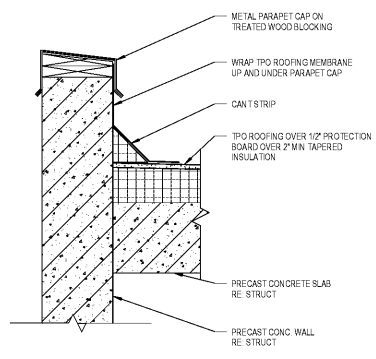
3 PRECAST WALL DETAIL  
 AS4F SCALE: 1/2" = 1'-0"



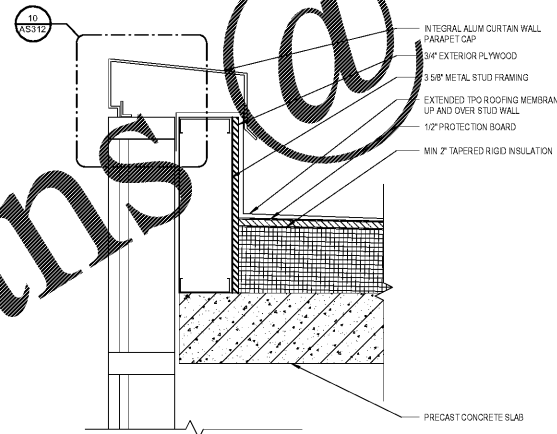
4 CANOPY FLASHING DETAIL  
 AS4G SCALE: 1/2" = 1'-0"



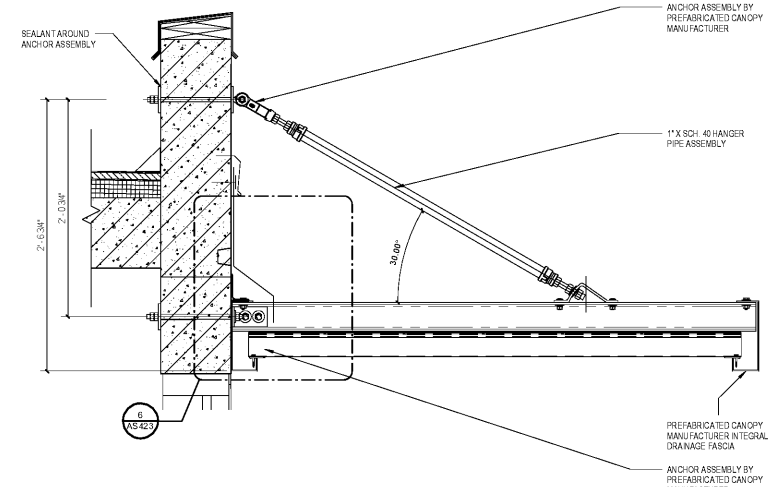
5 PRECAST WALL DETAIL  
 AS4H SCALE: 1/2" = 1'-0"



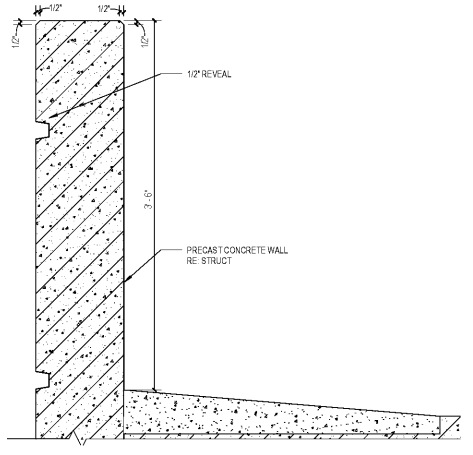
6 TYP PARAPET SECTION  
 AS4I SCALE: 1/2" = 1'-0"



7 CURTAIN WALL PARAPET DETAIL  
 AS4J SCALE: 1/2" = 1'-0"



8 CANOPY DETAIL  
 AS4K SCALE: 1/2" = 1'-0"



9 CHAMFER DETAIL  
 AS4L SCALE: 1/2" = 1'-0"

www.LDILine.com

Order Plans @

Revisions:	Date

**VA**

MEMPHIS VAMC  
1030 JEFFERSON AVE, MEMPHIS, TN 38104

**U.S. Department  
of Veterans Affairs**

**ARCHITECT/ENGINEERS:**

**PROJECT LEAD**  
Architect, Structural Engineer, Civil Engineer  
**GUIDON DESIGN**

305 N. CAPITOL AVE. SUITE 100 INDIANAPOLIS, IN 46204  
317.860.6388 WWW.GUIDONDESIGN.COM  
SUSTAINABLE ARCHITECTURE + ENGINEERING

**MEP Engineer**  
APOGEE CONSULTING GROUP

1151 Kildaire Farm Rd.  
Suite 120  
Cary, NC 27511  
Tele: 919-858-7420

**Functional Design**  
CARL WALKER INC.

3211 Internet Blvd., Suite 220  
Frisco, TX 75034  
Tele: 469-777-5143

Drawing Title <b>DETAILS</b>		Project Title <b>CONSTRUCT PARKING GARAGE ON WEST LOT</b>		Project Number <b>15.1067</b>		OFFICE OF FACILITIES MANAGEMENT	
		Location <b>MEMPHIS, TN</b>		Drawing Number <b>AS423</b>			
Approved for Design Concept: <b>FACILITY MANAGEMENT DIVISION MANAGER</b>		Date 11/14/2016	Checked By:	Drawn By:	VA Project Number <b>614-319</b>		
			Checker	Author			
BID SET						E.S. Expertise of Veterans Affairs	

1 2 3 4 5 6 7 8 9